

# DOMUS NOVA



Westbourne Grove W2  
£675,000





Down a discreet entrance just off Westbourne Grove, a one-bedroom apartment offers light-flooded lateral living with warm tones and industrial finishes. Enter a spacious, open-plan kitchen and dining room, with a texturally engaging exposed-brick wall and sweeping wood floors. Double sash windows sit above a wall-to-wall window seat, affording an easy-going atmosphere. Sitting opposite, a striking kitchen unit: distressed mirrored cabinets and copper finishes reflect gilded light across its surface. Appliances are integrated and discreet, lending attention to this showpiece of interior design.

Head through to the bedroom, where hushed tones and high ceilings offer a relaxed feel. It's served by a sleek bathroom next door; with mirrored cabinets continuing the home's alluring material palette.








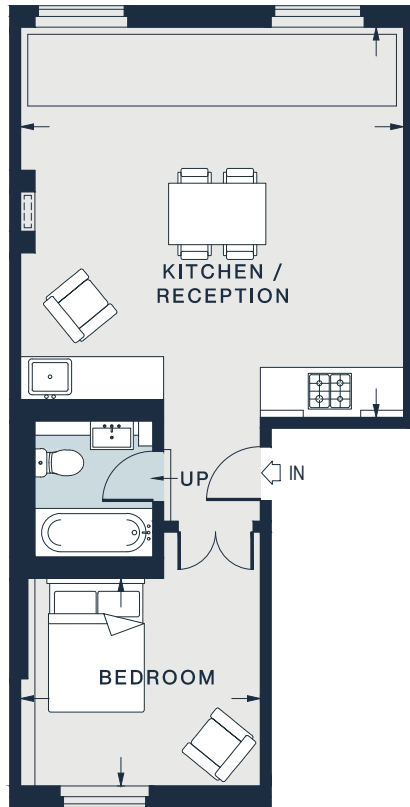








 = Reduced head height below 1.5m



FIRST FLOOR

KITCHEN / RECEPTION  
17'10 x 17'6 (5.4m x 5.3m)

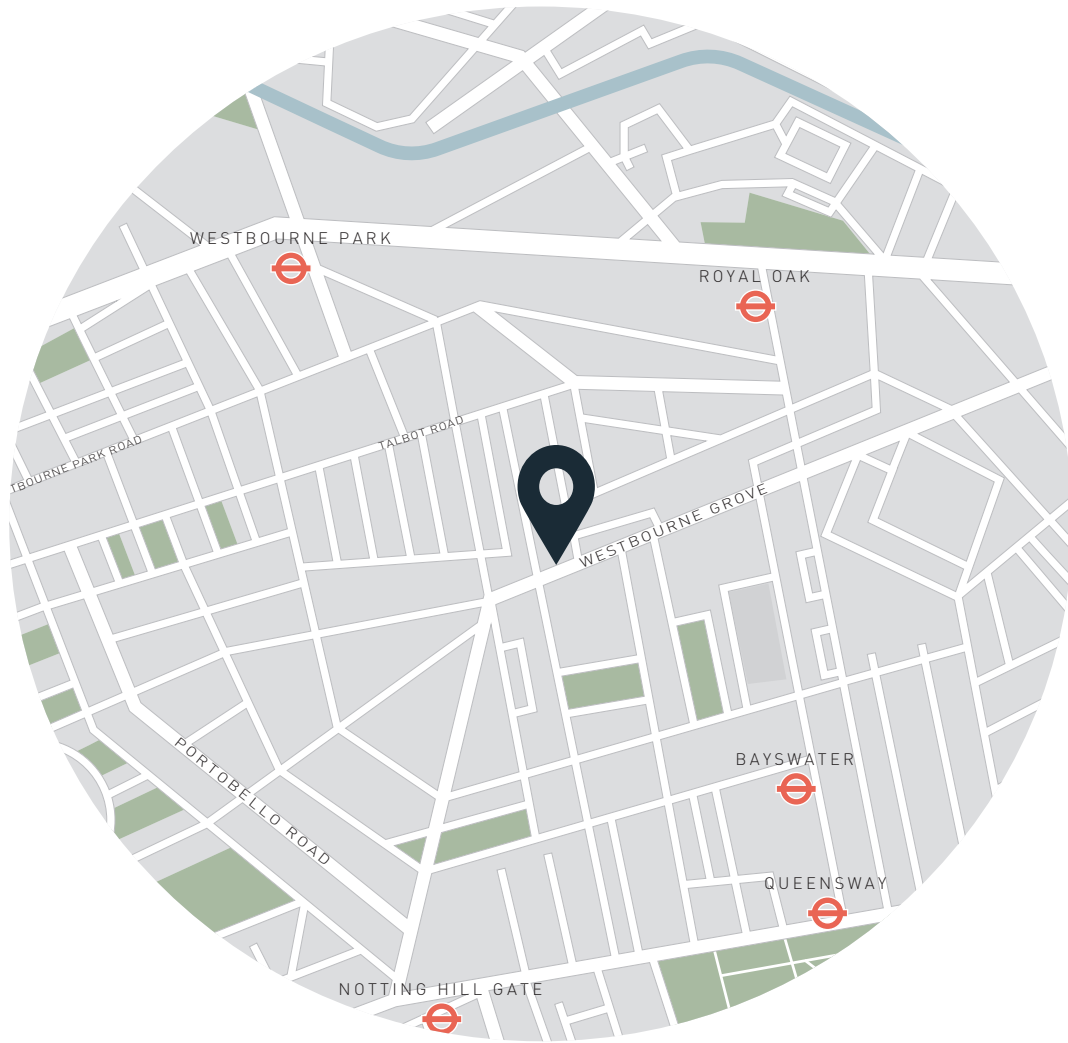
BEDROOM  
11'0 x 9'7 (3.3m x 2.9m)

## Property Details

Open-plan kitchen and reception room  
Double bedroom  
One bathroom  
City of Westminster

Approx. 500 sq ft / 46.5 sq m  
EPC=E  
Leasehold - 104 years  
Ground Rent - £200 per annum





## Location

Arguably one of Notting Hill's most vibrant and fashionable streets, Westbourne Grove is home to a wealth of boutiques, eateries and amenities. Local produce is best from Daylesford Organic Farm Shop or Planet Organic. Favoured brunch spots include Beam, Granger & Co. or Farmacy. For invigorating workouts, head to Bodyism, 1Rebel or Psyche. It's a short walk to the manicured lawns of Hyde Park – the perfect spot for a summertime picnic.



Specialising in London  
and Ibiza's design-led homes

Let's talk  
020 7221 7817  
sales@domusnova.com  
domusnova.com

The particulars above are a guide, not an offer or contract. Descriptions, photographs and plans are not statements or representations of fact. Measurements are approximate and not to scale. Prospective purchasers must verify the accuracy of the information within the particulars. Domus Nova does not give any representations or warranties, nor represent the Seller legally. Domus Nova has no liability, for any costs, losses or expenses incurred by the Seller or a prospective buyer relating to the sales and buying transaction.

Our Sales Disclaimer, trading names and privacy policy on how your data is processed and used is found in full on our website in our [Privacy Statement](#).

© Domus Nova 2023. All rights reserved.