

DOMUS NOVA

Westbourne Grove

Notting Hill W2

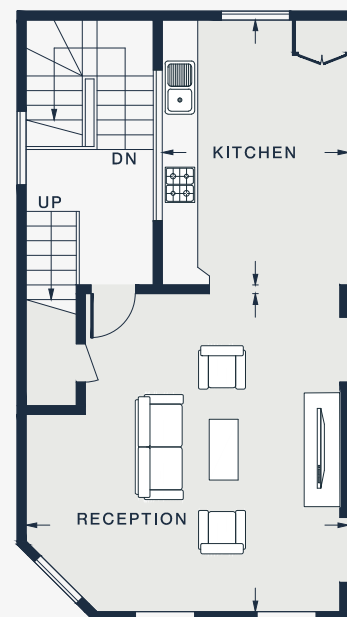
APPROXIMATE GROSS INTERNAL AREA

1,214 sq ft / 112.8 sq m

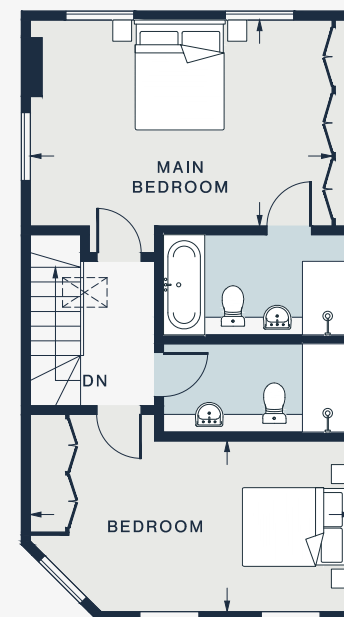
020 7727 1717

domusnova.com

LONDON | IBIZA



SECOND FLOOR



THIRD FLOOR



FIRST FLOOR

RECEPTION

17'10 x 17'7 (5.4m x 5.4m)

KITCHEN

14'10 x 10'5 (4.5m x 3.2m)

MAIN BEDROOM

16'11 x 11'6 (5.2m x 3.5m)

BEDROOM

17'9 x 9'7 (5.4m x 2.9m)

Approx. Gross Internal Area = 1214 sq ft / 112.8 sq m

Floor plans are for illustrative purposes only and not to scale. Compliant with RICS code of measuring practice. Furniture layouts are indicative only. This property may be furnished, part-furnished or unfurnished. Please refer to your agent for details.