

# DOMUS NOVA

Westbourne Gardens  
Bayswater W2

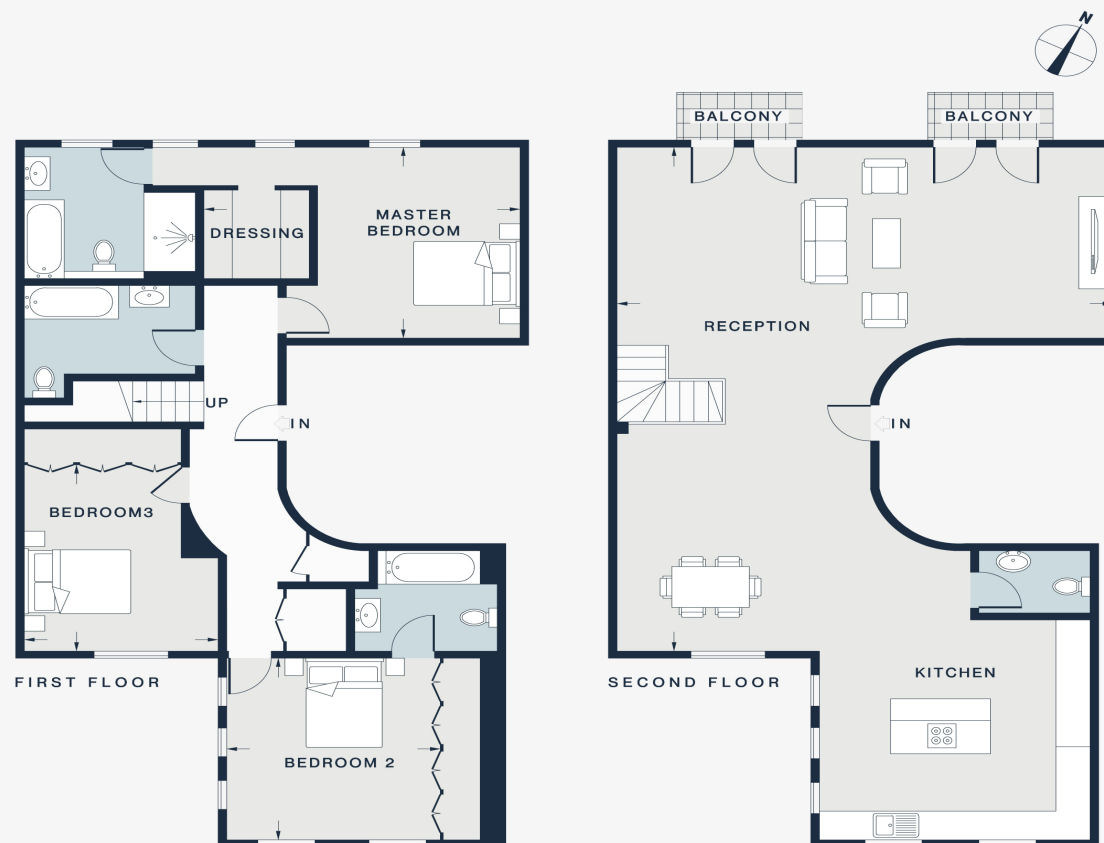
APPROXIMATE GROSS INTERNAL AREA

1,938 sq ft / 180 sq m

020 7727 1717

domusnova.com

LONDON | IBIZA



RECEPTION  
34'5 x 28'7 (10.5m x 8.7m)

MASTER BEDROOM  
18'3 x 13'1 (5.5m x 4.0m)

BEDROOM 2  
12'6 x 12'4 (3.8m x 3.7m)

BEDROOM 3  
12'10 x 11'2 (3.9m x 3.4m)

Floor plans are for illustrative purposes only and not to scale. Compliant with RICS code of measuring practice.  
Furniture layouts are indicative only. This property may be furnished, part-furnished or unfurnished. Please refer to your agent for details.