

# DOMUS NOVA

Westbourne Gardens

Bayswater W2

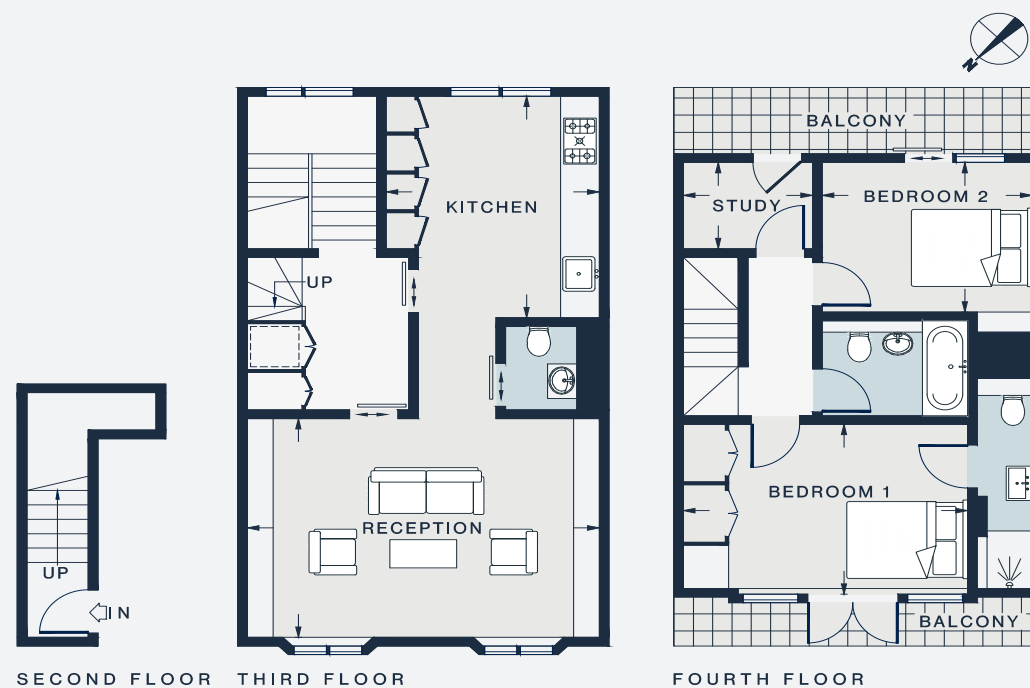
APPROXIMATE GROSS INTERNAL AREA

1,034 sq ft / 96.1 sq m

020 7727 1717

domusnova.com

LONDON | IBIZA



RECEPTION  
17'10 x 12'11 (5.4m x 3.9m)

KITCHEN  
12'8 x 10'9 (3.8x 3.2m)

STUDY  
7'1 x 5'0 (2.1m x 1.5m)

BEDROOM 1  
14'5 x 9'7 (4.4m x 2.9m)

BEDROOM 2  
10'8 x 8'6 (3.2m x 2.6m)

Floor plans are for illustrative purposes only and not to scale. Compliant with RICS code of measuring practice. Furniture layouts are indicative only. This property may be furnished, part-furnished or unfurnished. Please refer to your agent for details.