

DOMUS NOVA

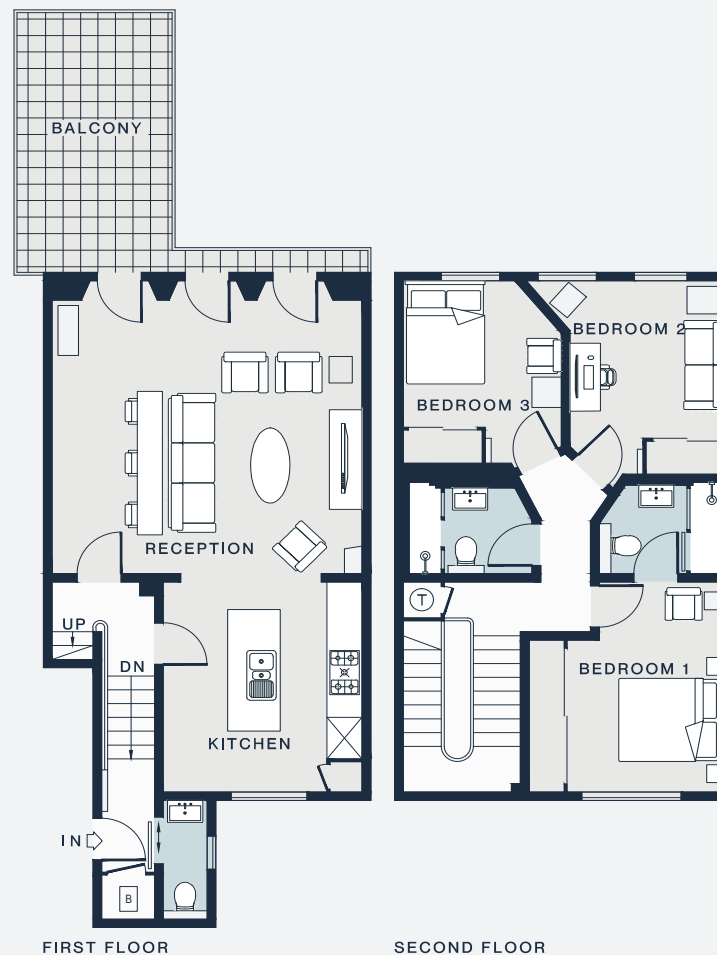


Westbourne Gardens

Bayswater W2

APPROXIMATE GROSS INTERNAL AREA

1,100 sq ft / 102.2 sq m



RECEPTION 17'5 x 16'2 (5.3m x 4.9m)	BALCONY 19'7 x 15'4 (6.0m x 4.7m)	BEDROOM 2 11'3 x 11'3 (3.4m x 3.4m)
KITCHEN 12'6 x 11'11 (3.8m x 3.4m)	BEDROOM 1 12'6 x 11'0 (3.8m x 3.3m)	BEDROOM 3 10'9 x 8'10 (3.3m x 2.7m)

Approx. Gross Internal Area = 1,100 sq ft / 102.2 sq m

Floor plans are for illustrative purposes only and not to scale. Compliant with RICS code of measuring practice. Furniture layouts are indicative only. This property may be furnished, part-furnished or unfurnished. Please refer to your agent for details.

020 7727 1717

domusnova.com

LONDON | IBIZA