

DOMUS NOVA

Westbourne Gardens

Bayswater W2

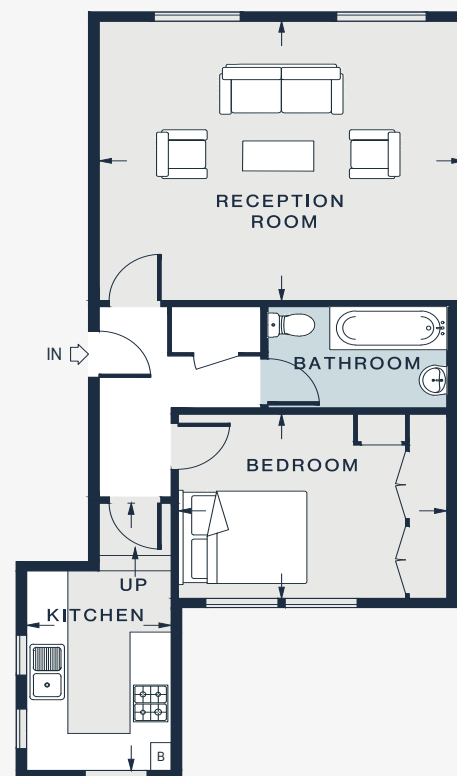
APPROXIMATE GROSS INTERNAL AREA

593 sq ft / 55.1 sq m

020 7727 1717

domusnova.com

LONDON | IBIZA



GROUND FLOOR

RECEPTION
17'6 x 15'0 (5.3m x 4.5m)

BATHROOM
8'7 x 5'5 (2.6m x 1.6m)

KITCHEN
14'0 x 6'11 (4.2m x 2.1m)

BEDROOM
12'10 x 9'11 (3.9m x 3.0m)

Approx. Gross Internal Area = 593 sq ft / 55.1 sq m

Floor plans are for illustrative purposes only and not to scale. Compliant with RICS code of measuring practice. Furniture layouts are indicative only. This property may be furnished, part-furnished or unfurnished. Please refer to your agent for details.