

DOMUS NOVA



Well Road NW3
£7,500 p/w - Short Let



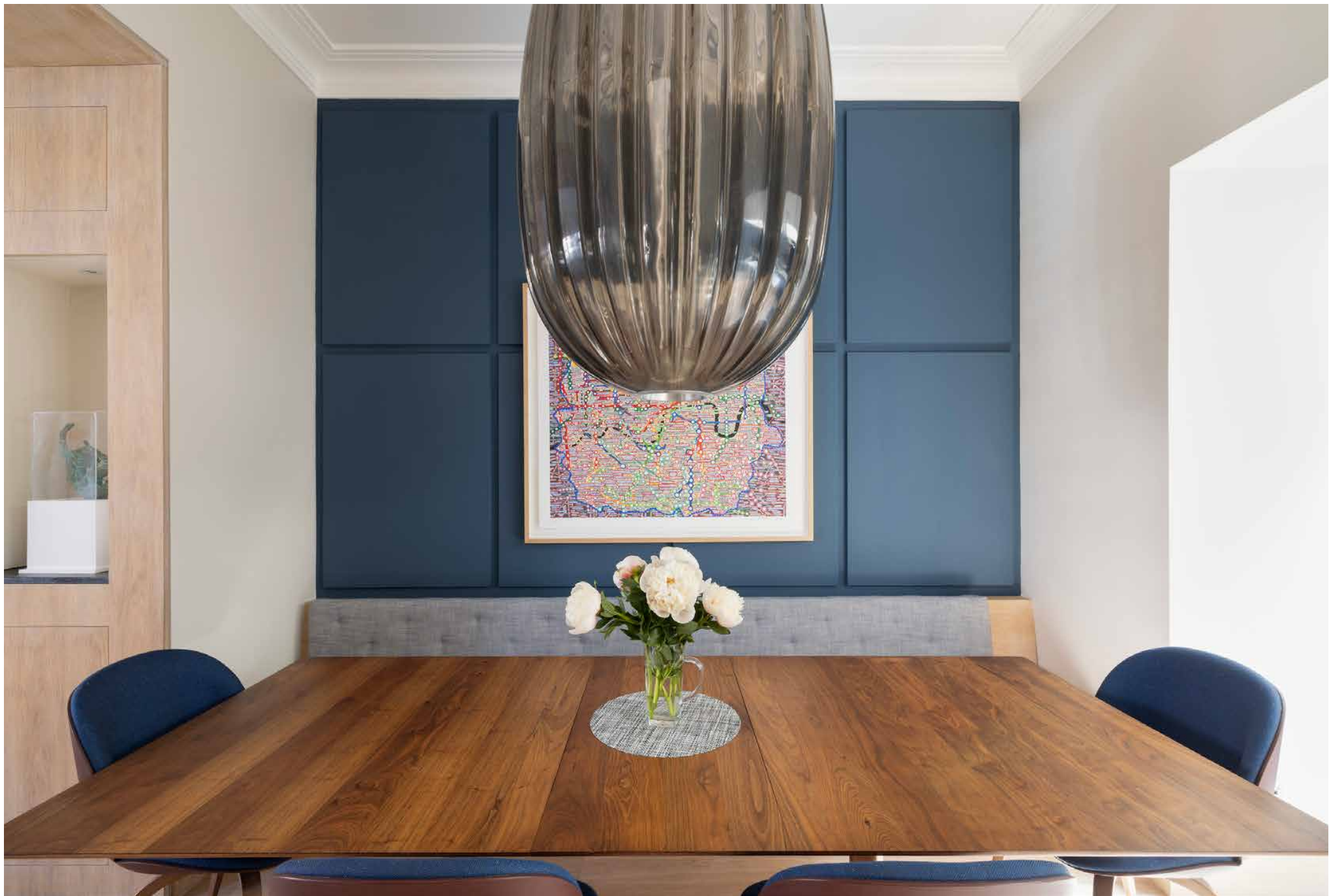
Pioneering interior design spread across five spacious floors, Well Road makes a contemporary stamp on its period heritage. Plus, a suntrap terrace for a breath of fresh air.

Storied streets with a village-like appeal, Hampstead is a trove of heritage homes set for well-heeled family living. Well Road is no exception, with its handsome red-brick exterior, considered use of space and proximity to the pastoral plains of Hampstead Heath. Behind its period façade, this family home has been reimagined with T G Studios' contemporary architectural vision, with more recent interior design updates by Audrey Carden of Carden Cunietti.

An open-plan kitchen, dining and reception room is united by blonde floors and reams of natural light. To one side, striking artwork makes a bold statement against neutral walls, while sculptural chairs are focused around a marble coffee table. Wooden banquette seating affords a relaxed atmosphere to the eating area, illuminated by an oversized pendant light. The skylit kitchen pairs dark-blue cabinets with whitewashed Corrian worktops; Gaggenau appliances are integrated for a streamlined environment.









A staircase finished with immaculate glass balustrades invites you upstairs to a double reception room. Light pours in through sash windows, generating an atmosphere that's both uplifting and soothing. To one side, a living space is imagined for cosy evenings, with a large sofa and sleek television. To the other, floor-to-ceiling storage accentuates the room's high ceilings, with a Carrara marble bar area carved inside. From here, head out to the private terrace. Complete with integrated bench seating, Weber barbecue, pizza oven and teal-toned marble fireplace, it's a suntrap sanctuary for al fresco entertaining.





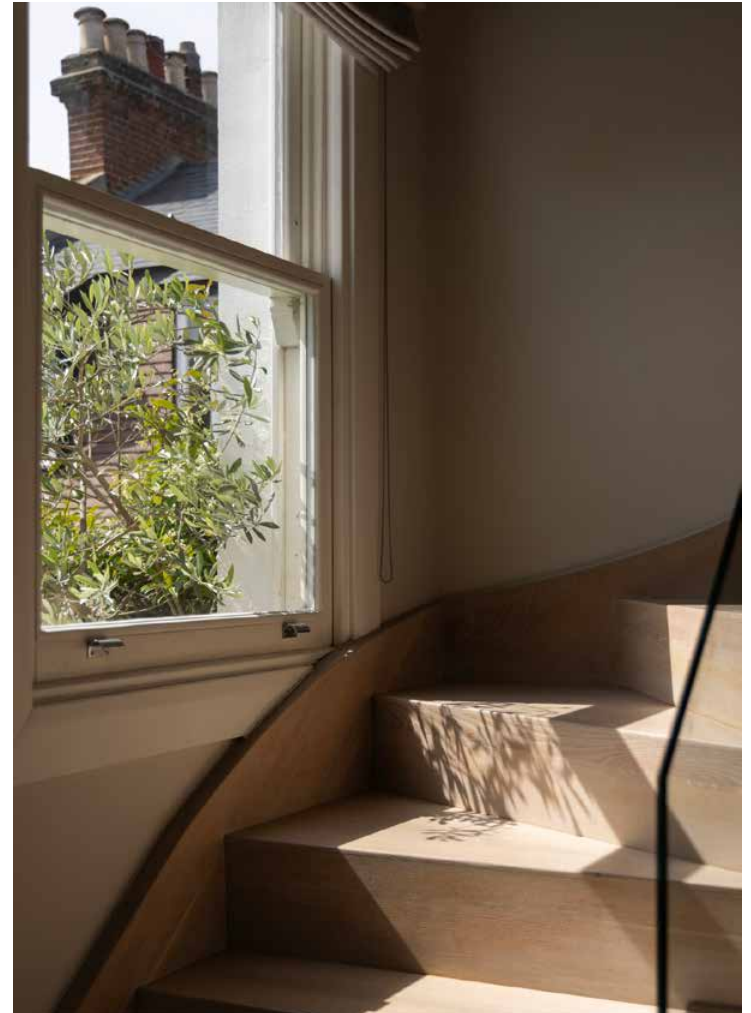




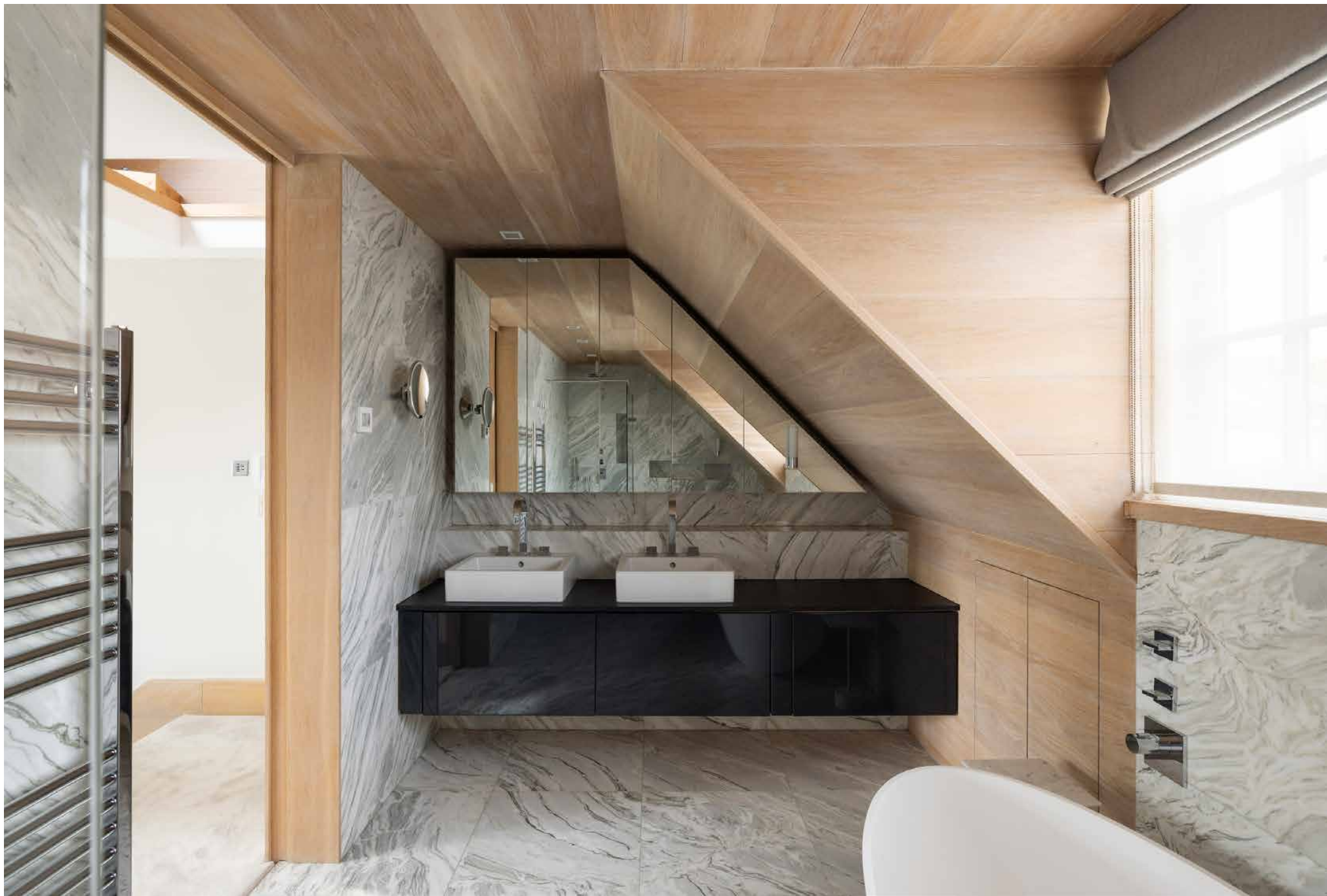


Sleeping quarters are spread across the fourth and fifth floors, enjoying sweeping views across London. Nestled at the top of the home, find the serene principal bedroom suite. Its pale carpets and walls lend attention to custom-made, handwoven wall panels by textile artist Toyine Sellers. Through a sliding door, the en suite is a showpiece of bathroom design. Greyscale marble sets the stage for a free-standing tub and walk-in shower. Downstairs, two further bedrooms are calming with pared-back tones. A family bathroom – wrapped in granite-toned tiles – sits next door. A fourth double bedroom can be found on the lower-ground floor, with a walk-in wardrobe, en suite shower room and an airy feel courtesy of French doors. Next door, form meets function in the laundry room, featuring two large American-style machines. Verdant window boxes of self-watering flowers complete the exterior of this beautiful central Hampstead home.







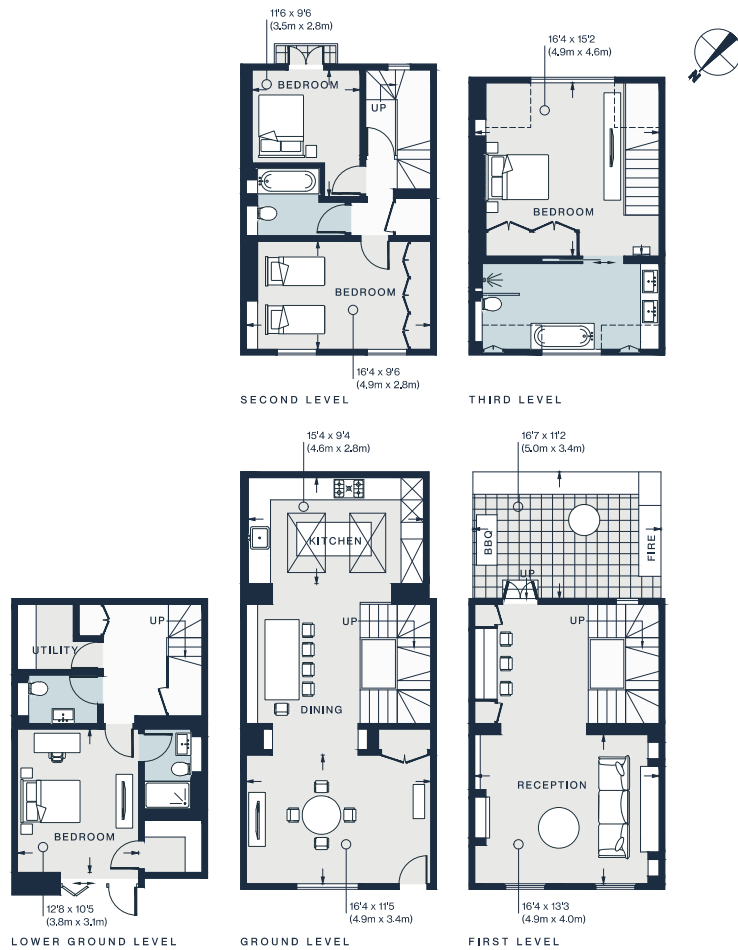












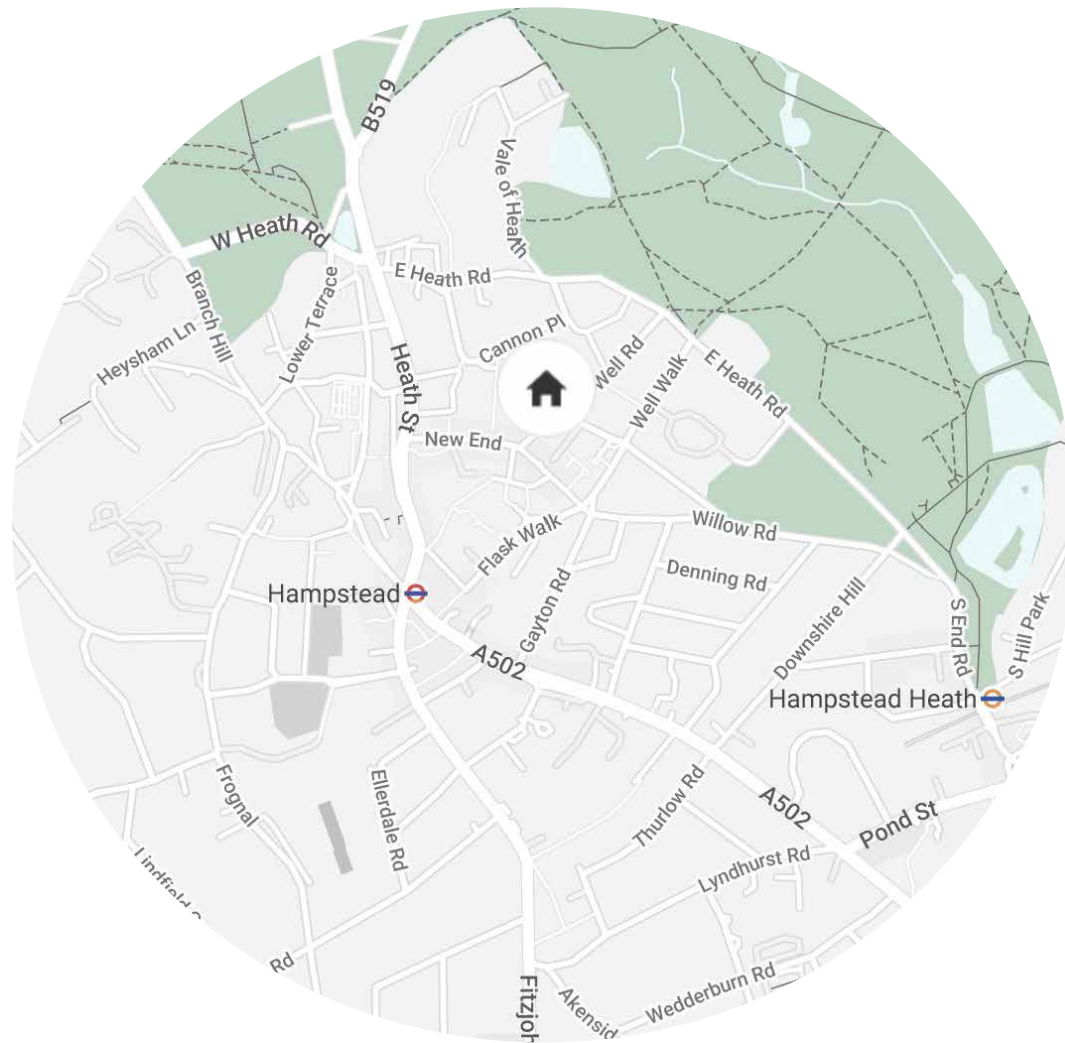
Approx. Gross Internal Area = 2,128 sq ft / 197.8 sq m

Floor plans are for illustrative purposes only and not to scale. Compliant withRICS code of measuring practice. Furniture layouts are indicative only. This property may be furnished, part-furnished or unfurnished. Please refer to your agent for details.

Property Details

Architect designed
 Open-plan kitchen, dining and reception room
 Second double reception room
 Principal bedroom suite
 Guest bedroom suite
 Two further bedrooms
 Family bathroom
 Utility room
 Private terrace
 London Borough of Camden

Approx. 2,128 sq ft / 197.8 sq m
 EPC: E
 Council Tax Band: H
 Deposit Payable: £32,500



Location

With its strong literary associations and village-like character, Hampstead is defined by its elegant charm, local amenities and proximity to the green oasis of the Heath. Head to the high street and pick up picnic supplies from Melrose and Morgan or grab a coffee from Gail's – London's flagship site. Sunday roasts are best at the Holly Bush or the Duke of Hamilton. Take a walk around the Hill Garden and Pergola before a swim in the serene bathing ponds. Dinner at The Flask followed by a gelato from Oddono's – home in 5 minutes.

Hampstead (5 mins)

Specialising in London
and Ibiza's design-led homes

Let's talk
020 7221 7817
sales@domusnova.com
domusnova.com

The particulars above are a guide, not an offer or contract. Descriptions, photographs and plans are not statements or representations of fact. Measurements are approximate and not to scale. Prospective purchasers must verify the accuracy of the information within the particulars. Domus Nova does not give any representations or warranties; nor represent the Seller legally. Domus Nova has no liability, for any costs, losses or expenses incurred by the Seller or a prospective buyer relating to the sales and buying transaction.

Our Sales Disclaimer, trading names and privacy policy on how your data is processed and used is found in full on our website in our [Privacy Statement](#).

© Domus Nova 2024. All rights reserved.