

DOMUS NOVA

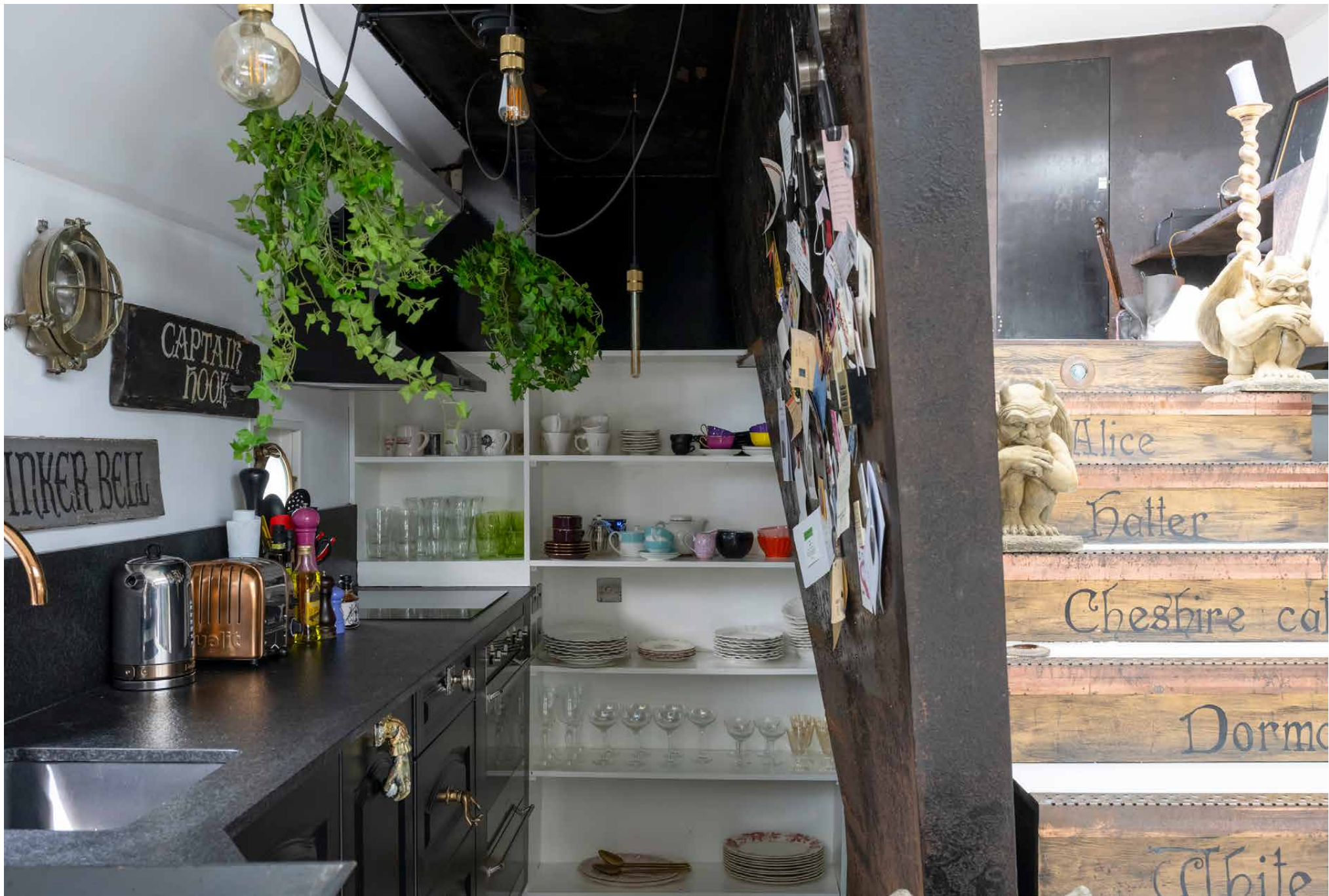


Wanderland Boat, SW6
£1,500,000



Wanderland's creator, French sculptor and artist Cyril de Commarque, spent three years transforming a 1950s Dutch grain barge into a 25-metre piece of stimulating architecture. Complete with a mirrored polyhedron exterior, the boat travelled from Holland to London in 2016 to host a series of visual and auditory installations and socio-political discussions. Today, the vessel has been reimagined for residential use by interior stylist and current homeowner Russell Amerasekera; across three levels, the two-bedroom barge is commanded by its wealth of natural light, spacious footprint and taste for the aesthetically eclectic.

Currently moored in Imperial Wharf, Wanderland captivates at first sight with its superstructural geometric façade that reflects the surrounding water and city architecture. From the dock, enter into the boat's upper mezzanine level. A series of steel-framed picture windows punctuate the walls at angular interventions, drawing sunlight inside. Decorative wrought-iron railings frame the whitewashed wood floors and can lie flat for clear vision during sailing. Just below, there's the original steering wheel from the Dutch barge.



CAPTAIN'S
HOOK

INKER BELL

Alice

Hatter

Cheshire cat

Dormo

White



PETER
PAN

TINKER BELL

CAPTAIN
JACK

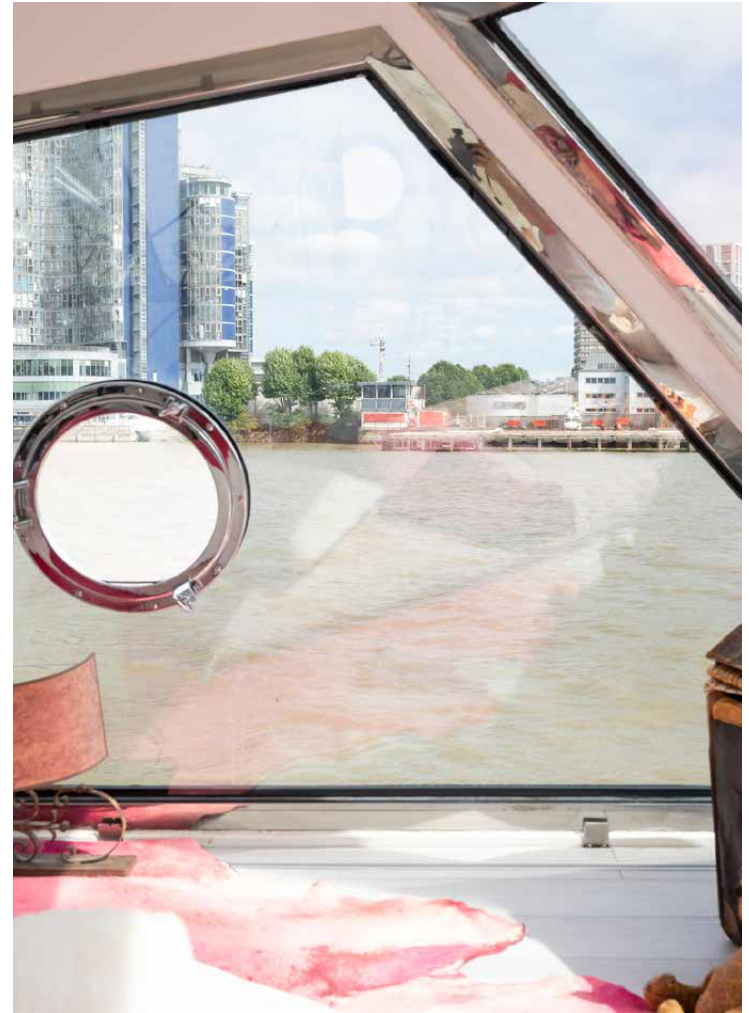




A bespoke staircase descends into the boat's social heart – an open-plan kitchen, dining and reception room. The atmosphere is uplifting; a double-height ceiling affords a capacious quality, while whitewashed wood floors, engineered with underfloor heating, run throughout. A punchy industrial edge is drawn with a row of steel girders above, complete with dramatic vintage chandeliers. The culinary space is stylish and ergonomic, pairing solid wood cabinetry and granite worktops with SMEG and Bosch appliances. Behind the staircase and kitchen, there's access into Wanderland's engine room. The fuel and water tanks, boiler and Bosch washer and dryer are all located here.

At the other end of the reception room, a sliding pocket door reveals the principal bedroom suite. A freestanding copper bathtub first commands attention, subtly elevated on a wood stand. Beyond, the bedroom is softly illuminated through brass porthole windows. On the lower mezzanine level, there's versatile space to be used as a bedroom or dressing room, complete with an en suite shower room. The boat also has two built-in steel desks for home working.

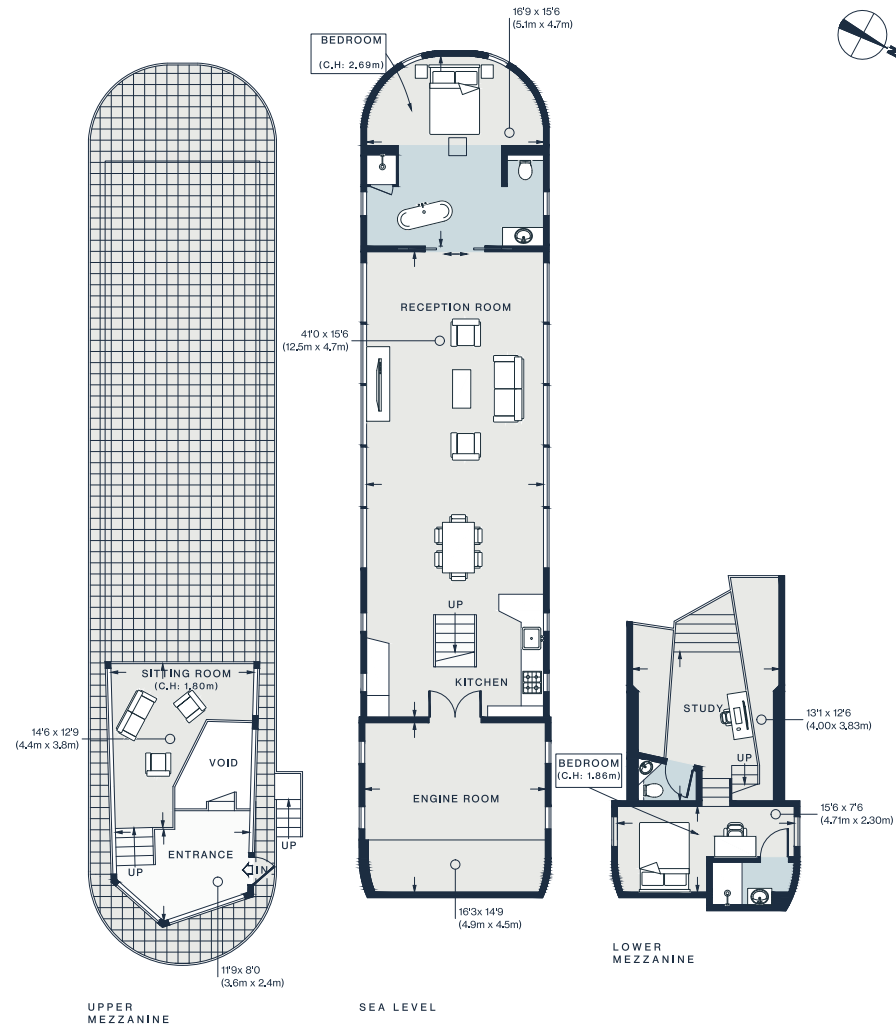








“ Wanderland captivates at first sight with its superstructural geometric façade that reflects the surrounding water and city architecture.



Approx. Gross Internal Area = 1,688 sq ft / 156.9 sq m

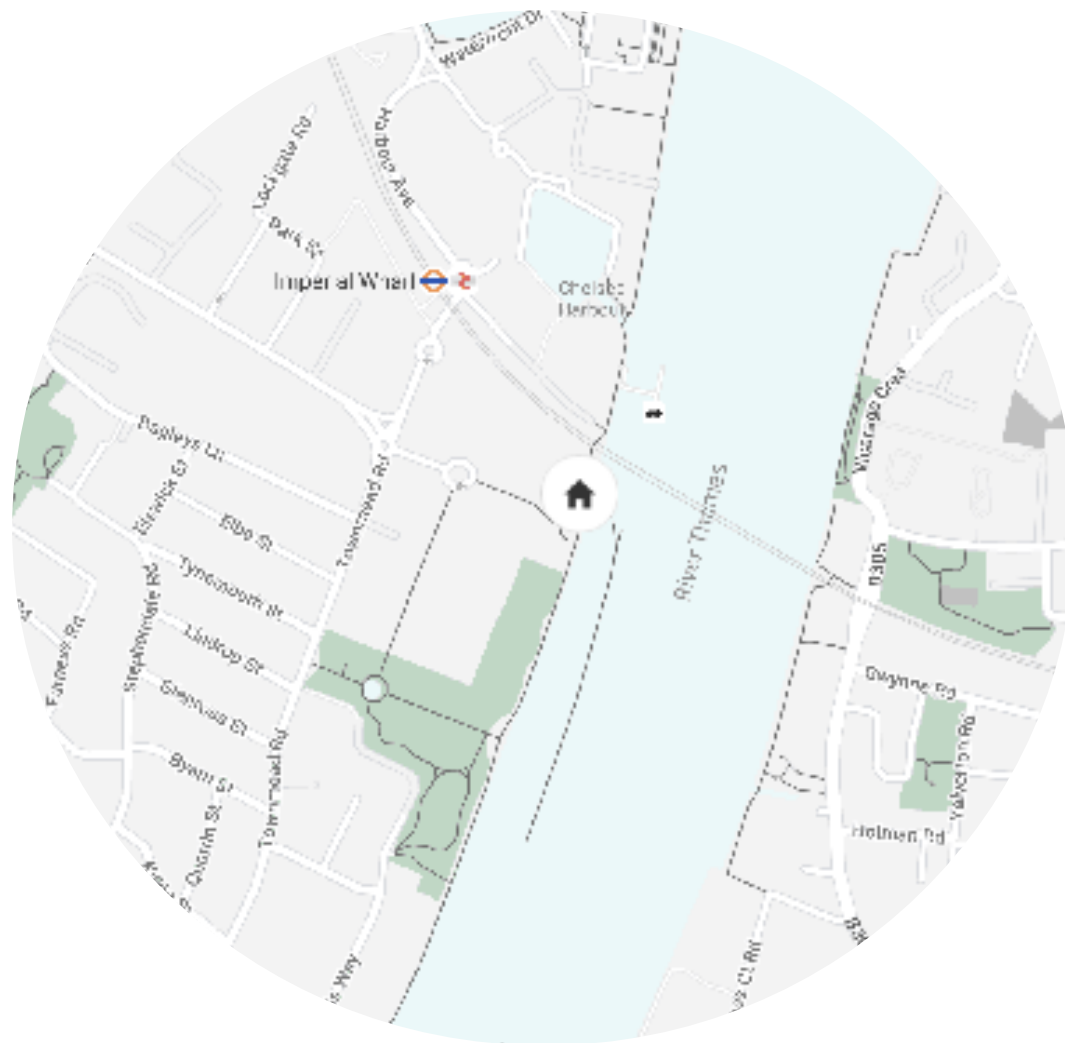
Floor plans are for illustrative purposes only and not to scale. Compliant with RICS code of measuring practice.

Property Details

Architecture by Cyril de Commarque
 Interior Design by Russell Amerasekera
 Open-plan kitchen, dining and reception room
 Upper Mezzanine sitting room
 Principal bedroom suite
 Additional bedroom / dressing room suite
 Two desk areas
 Additional WC
 Freehold with 1 year rolling mooring licence
 Mooring fees £20k per annum
 Borough of Hammersmith and Fulham

Approx. 1,688 sq ft / 159.9 sq m

Tenure: Freehold with 1 year rolling mooring licence



Location

Caught between Chelsea and Fulham, Wanderland's current position in Imperial Wharf offers a fantastic blend of idyllic waterside living and cosmopolitan city life. A tree-lined boulevard runs in the centre of the Wharf, complete with cafes, shops and community events – including an annual jazz festival. It's a ten-minute walk to Eel Brook common, a great spot for runs and rounds of tennis. The iconic King's Road is set for retail therapy, followed by an exhibition at the Saatchi Gallery. You can stock up on organic produce at the Chelsea Farmers Market, or if you feel like dining out, neighbourhood favourites include Myrtle and The Harwood Arms, London's only Michelin-starred pub. There's also the Grade II*-listed Battersea Power Station to explore, replete with shops and restaurants – plus the Battersea Arts Centre, situated in a Victorian hall, is a hub of live theatre and comedy.

Imperial Wharf - 7 mins (Overground, Southern)

Specialising in London
and Ibiza's design-led homes

Let's talk
020 7221 7817
sales@domusnova.com
domusnova.com

The particulars above are a guide, not an offer or contract. Descriptions, photographs and plans are not statements or representations of fact. Measurements are approximate and not to scale. Prospective purchasers must verify the accuracy of the information within the particulars. Domus Nova does not give any representations or warranties; nor represent the Seller legally. Domus Nova has no liability, for any costs, losses or expenses incurred by the Seller or a prospective buyer relating to the sales and buying transaction.

Our Sales Disclaimer, trading names and privacy policy on how your data is processed and used is found in full on our website in our [Privacy Statement](#).

© Domus Nova 2024. All rights reserved.