



# DOMUS NOVA

Walterton Road

Maida Vale W9

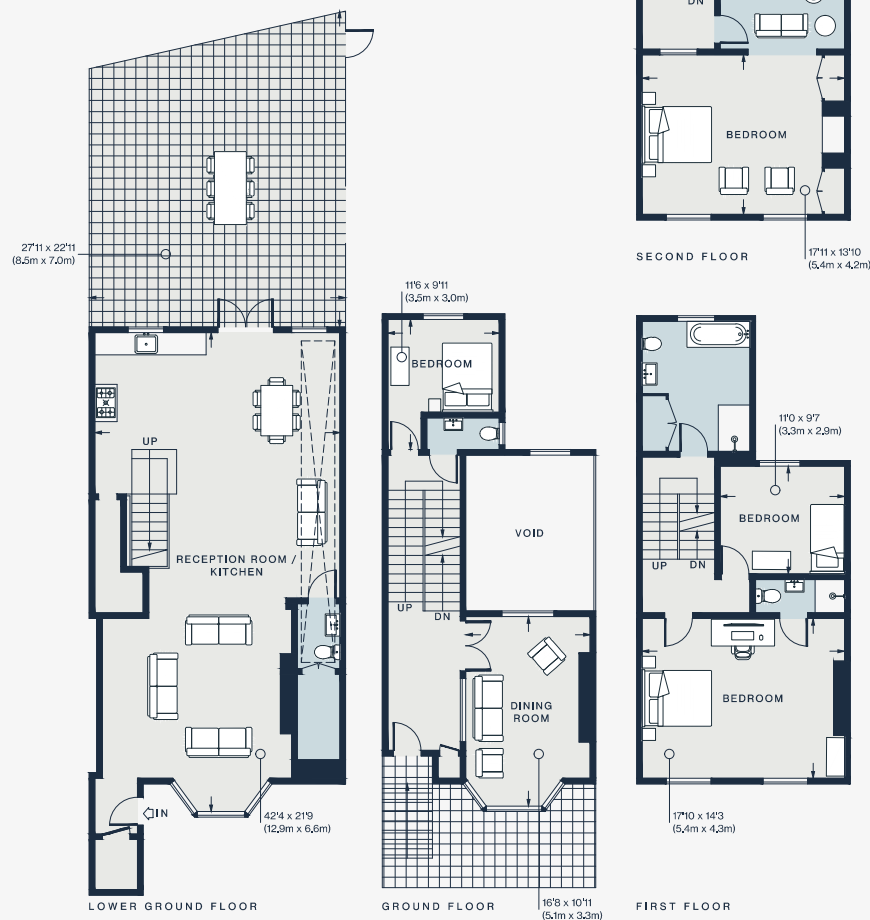
APPROXIMATE GROSS INTERNAL AREA

2,473 sq ft / 229.8 sq m

020 7221 7817

domusnova.com

LONDON | IBIZA



Approx. Gross Internal Area = 2,473 sq ft / 229.8 sq m

Floor plans are for illustrative purposes only and not to scale. Compliant with RICS code of measuring practice.