

DOMUS NOVA



Wallingford Avenue W10
£2,500 p/w - Long Let



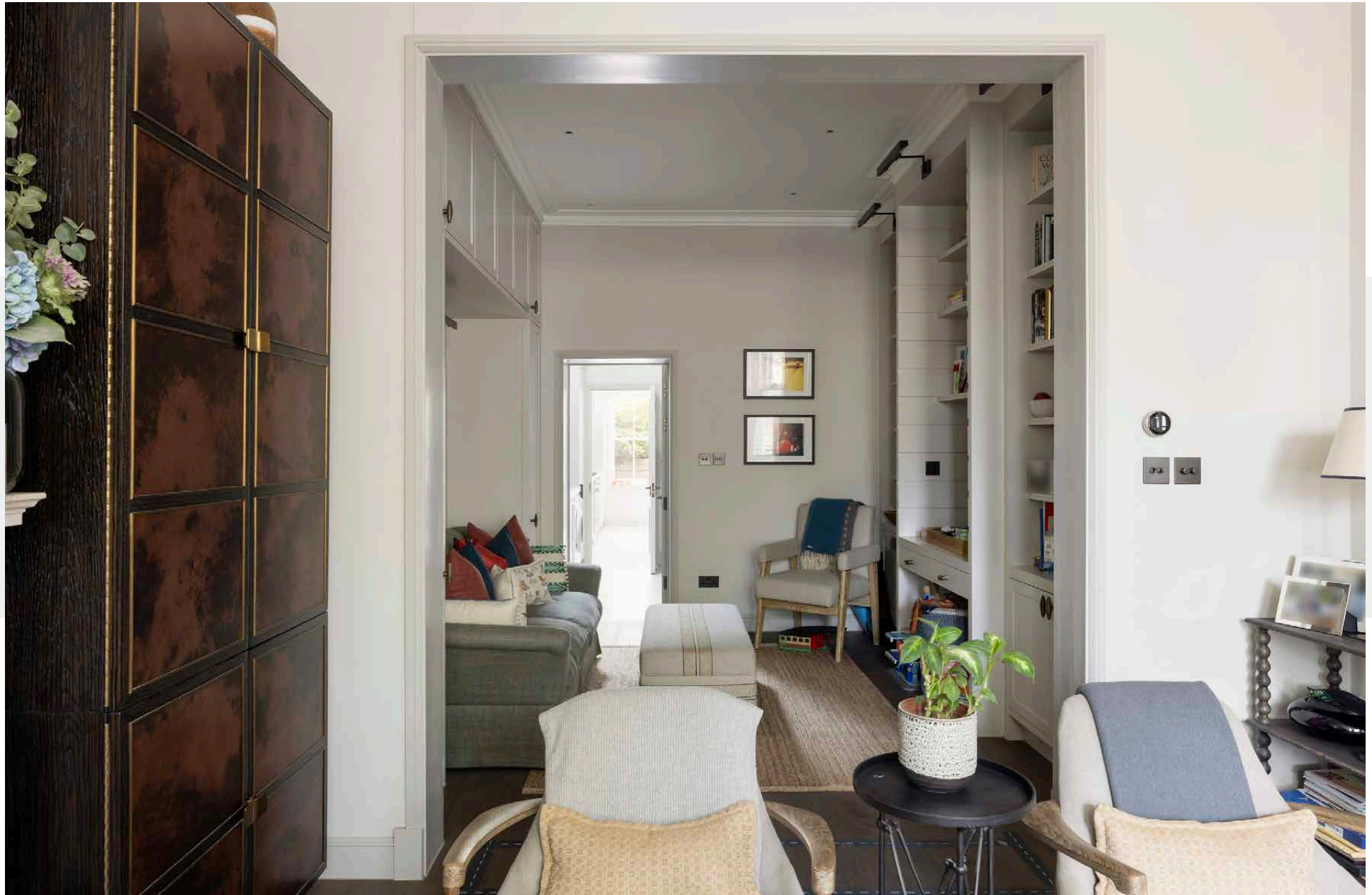
Set among rows of picturesque red-brick houses, this interior-designed home echoes the tranquillity of its surrounds. Conceived by the design aficionados at Turner Pocock, a refined material palette pairs with an inviting family feel.

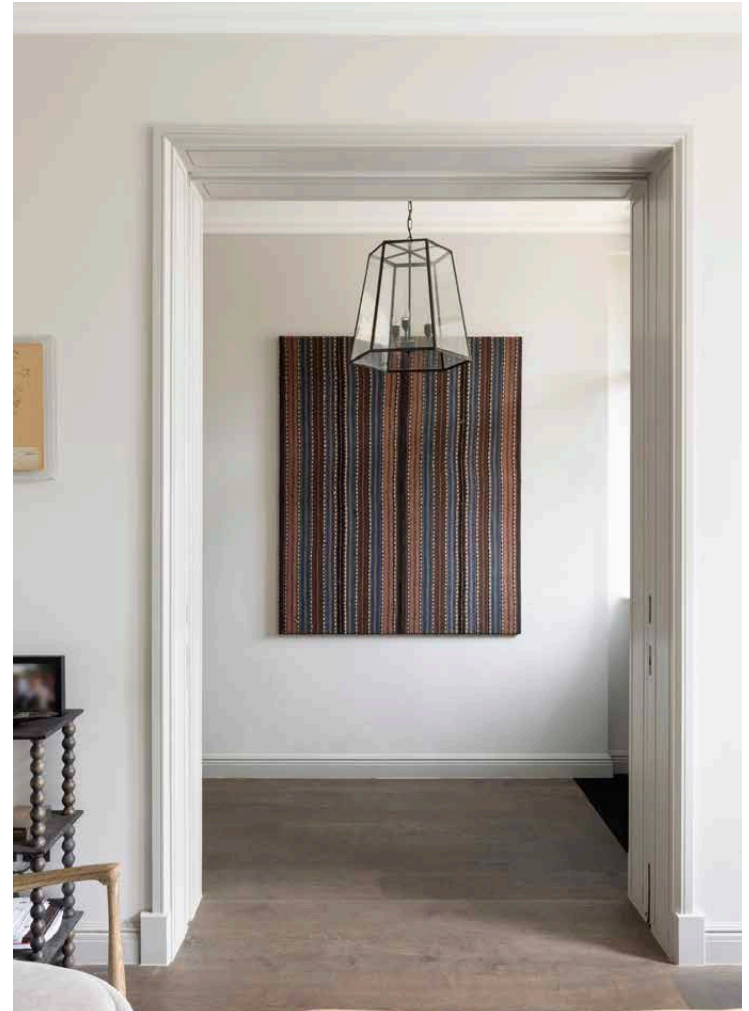
Past the entrance, double doors draw back to a timeless reception room. Light floods in to accentuate the scale of the space, with ceiling heights stretching over 3 metres high. A calming colour scheme sets the tone for peaceful social settings, while a feature fireplace draws in an inviting ambiance. An idyllic backdrop for family life to unfold, dark wooden floors connect an additional lounge. Framed by bespoke cabinetry to either side of the room, this versatile space can be imagined as a library, office, or TV snug.

Arranged across the rear of the home – a classic-meets-contemporary kitchen. Spacious enough to accommodate multiple chefs, a trio of skylights brings a vibrant air to this culinary setting. Veined marble counters offset soft grey cabinetry, while a custom-made banquet provides a stylish dining spot. Glass doors link the garden beyond, split between a paved patio and a green lawn.













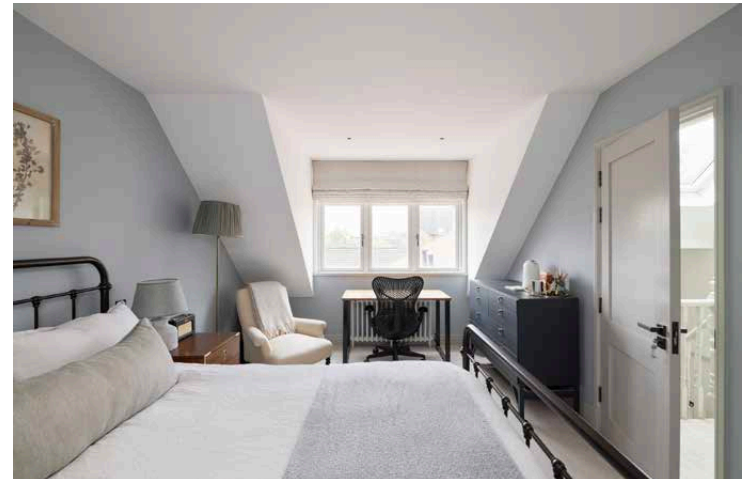
Found on the first floor, a sprawling principal bedroom suite pairs interior creativity with a restrained palette. A dedicated dressing area sits at the entrance, considerately keeping sleeping quarters clutter-free and refined. Beyond glass partition walls, a bay window lends natural light to the bedroom. A generous en suite bathroom sits adjacent, complete with a bathtub and a spacious rainfall shower.

Three further bedrooms sit across the first and second floor, each dressed in muted hues for a restful feel. Two family bathrooms serve these rooms, both with bathtubs and refined design.

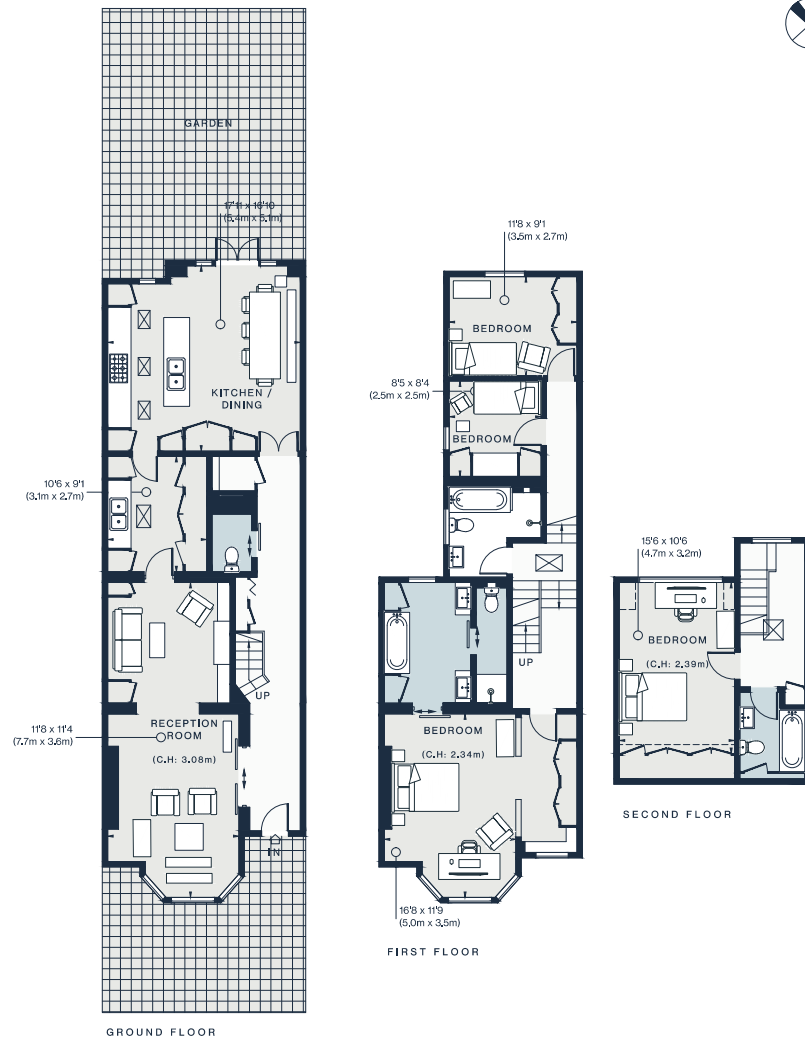












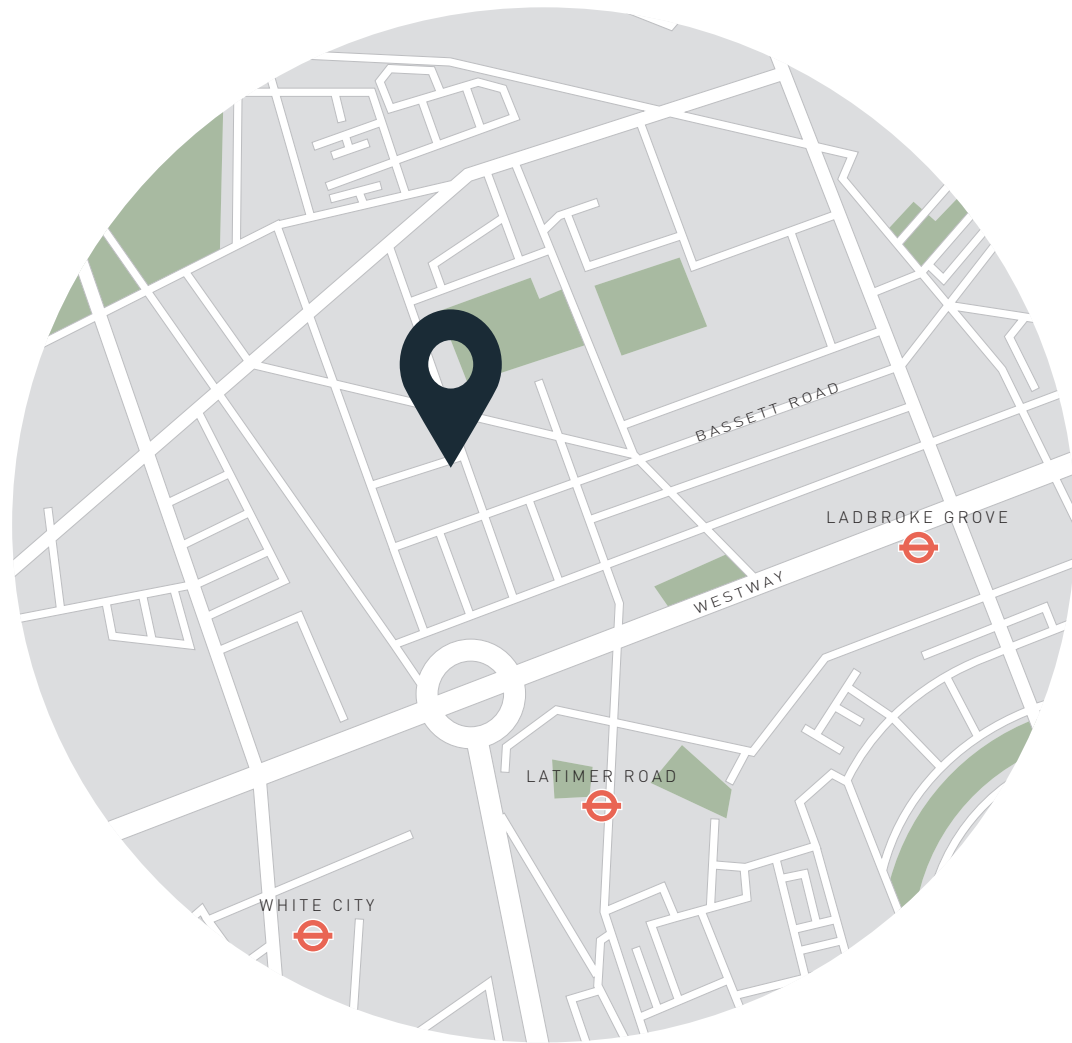
Approx. Gross Internal Area = 2063 sq ft / 191.7 sq m

Floor plans are for illustrative purposes only and not to scale. Compliant with RICS code of measuring practice. Furniture layouts are indicative only. This property may be furnished, part-furnished or unfurnished. Please refer to your agent for details.

Property Details

Interior Design by Turner Pockock
 Open-plan kitchen and dining room
 Double reception room
 Principal bedroom suite with dressing area
 Three further bedrooms
 Two family bathrooms
 Private garden
 London Borough of Kensington & Chelsea

Approx. 2,063 sq ft / 191.7 sq m
 EPC = D
 Council Tax Band = G
 Deposit = £15,000



Location

There's a community feel to North Kensington, where the streets are lined with period façades and leafy trees. A place to press pause in a thrumming capital. Yet, you're never far from some of West London's notable hotspots. Within walking distance of both Golborne and Portobello Road, there's an array of independent businesses on the doorstep. Shop for supplies at Golborne Deli & Wine Store, book lunch at Straker's or enjoy pastries to go from Lisboa. Spend weekends browsing renowned antique and vintage stalls. For luxury shopping, The Village at Westfield is close by – stop for a drink at the White City branch of Soho House.

Ladbroke Grove (12 mins)

Specialising in London
and Ibiza's design-led homes

Let's talk

020 7727 1717

lettings@domusnova.com

domusnova.com

The property particulars are a guide not statements. Descriptions, photographs, and plans are for guidance and should be checked by the prospective tenant. The Property is offered "subject to contract and references". No warranties, representations, or Tenancy is given by Domus Nova. Expenses incurred by a prospective tenant will not be reimbursed if the Landlord withdraws prior to the Tenancy Agreement being signed, dated and exchanged and cleared funds received. Furniture and other items shown in a property at viewing may belong to a current tenant. The prospective tenant should verify in writing which fixtures and fittings forms part of the Tenancy. Our full lettings disclaimer together with trading names and our [Privacy Policy](#) is shown on our website