

DOMUS NOVA



Villa Monica, North East Ibiza

For 10 guests



Undulating hills give way to striking sea views at this architect-designed five-bedroom villa for rent.

Among sweet-scented forests in the north of the island, this architect-designed villa makes a feature of its striking surrounds. Perfectly positioned to look across the Balearic Sea, wind down here with an unrivalled feeling of relaxation.

Inside there's a captivating sense of old meets new. Beyond towering wooden doors, time-honoured materials work in harmony with modern design. Stretches of glazing flood in light, at every moment drawing focus to captivating vistas. A skylight draws warmth to a sociable culinary setting, where Elm and Sabina beams lend a light rustic feel. Gather at a striking stone island or settle in for the evening across the 10-seater dining table. Steps lead down to an indulgent cinema room – an inviting spot to convene on cooler evenings.

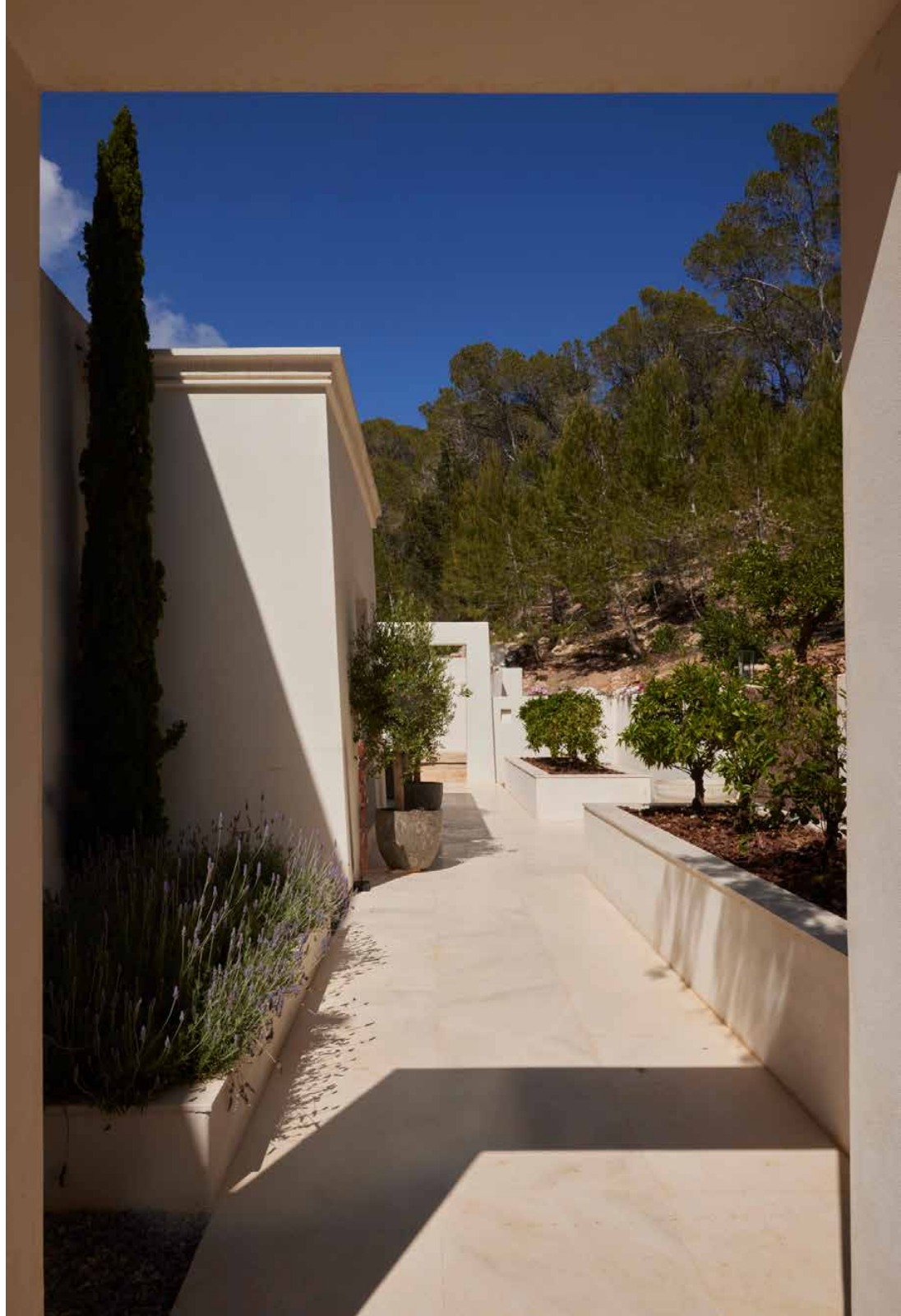
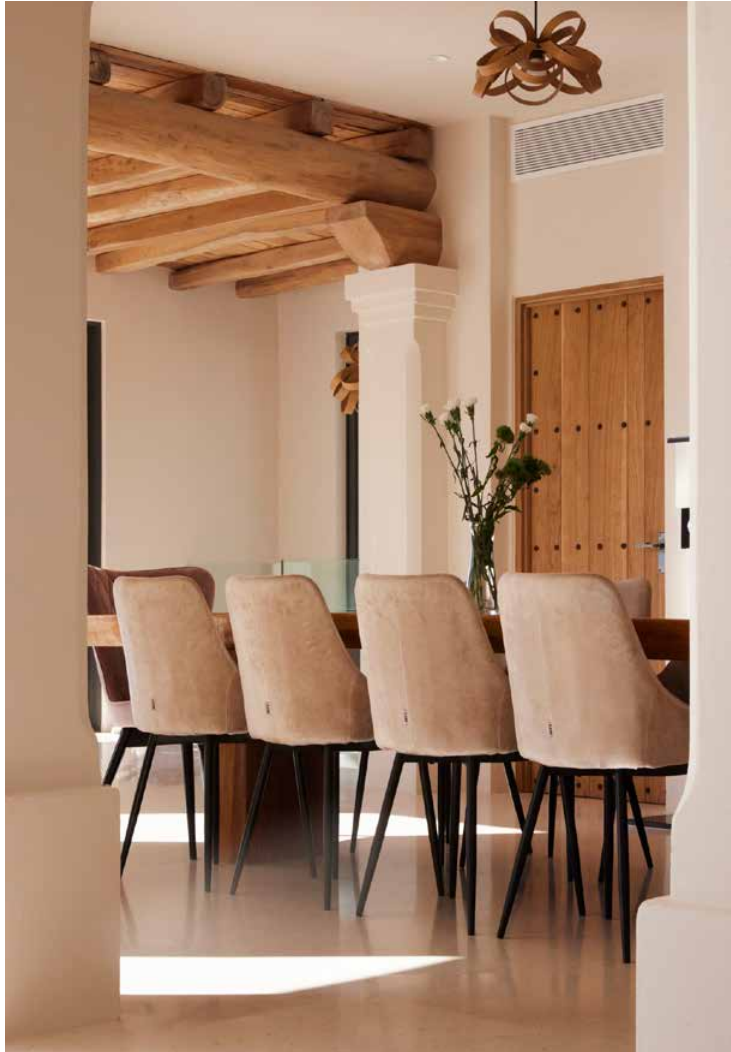
Stepping outdoors – a terrace extends seamlessly from the interiors. An infinity pool beckons on sun-drenched days, while picturesque landscape and glistening sea make for an alluring backdrop.





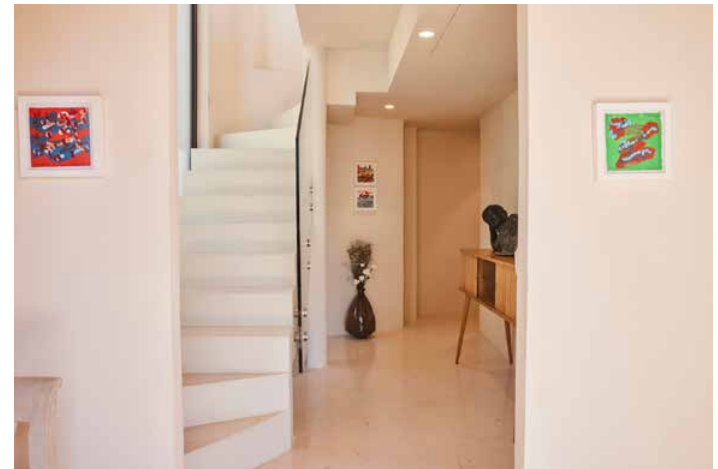








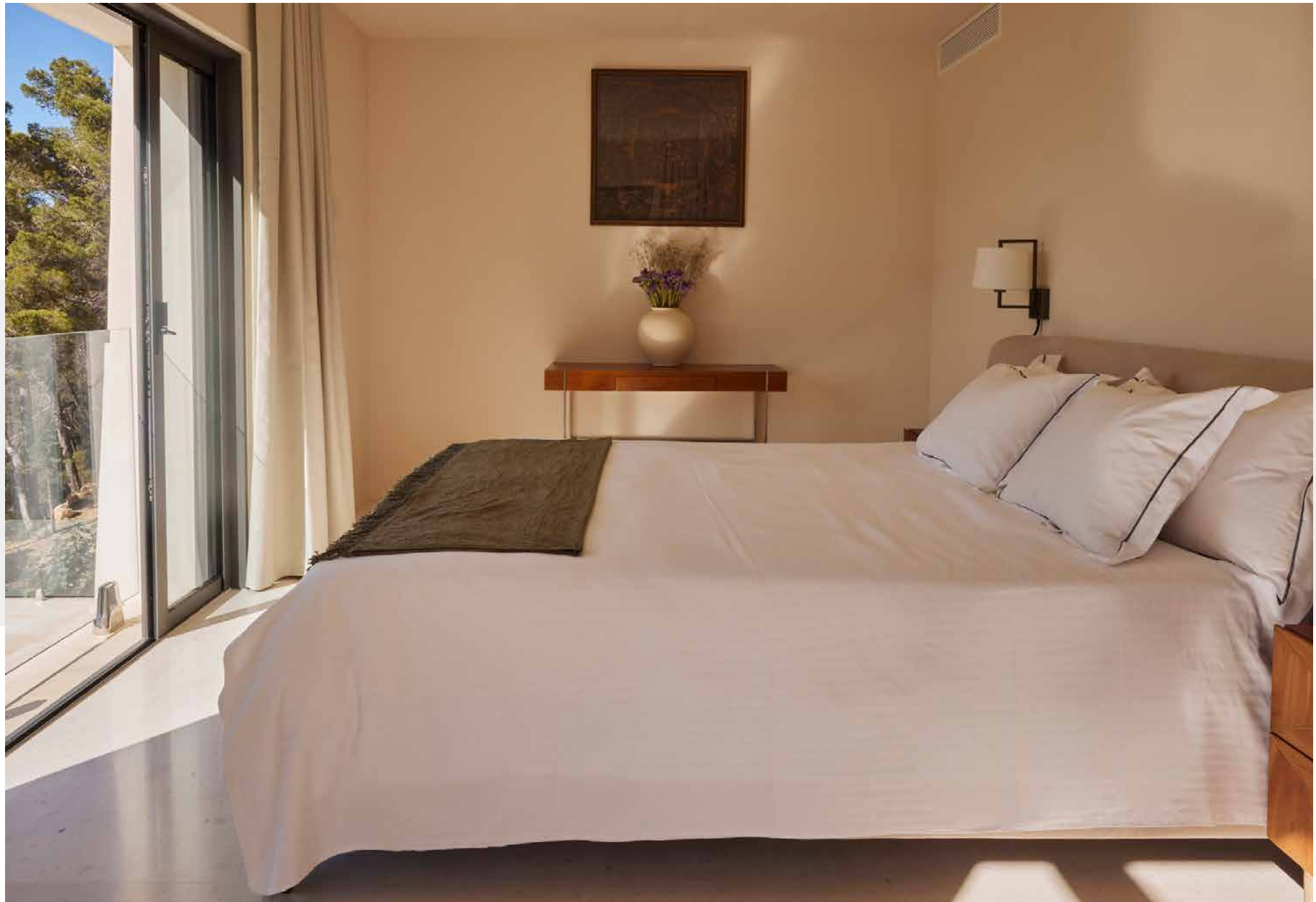




Upstairs, the principal bedroom suite impresses with neutral tones and natural light. Complete with its own private terrace, there's also an enviable en suite bathroom with an oval bathtub to sink into. Elsewhere four further bedrooms enjoy an abundance of light, two of which also feature exterior access.

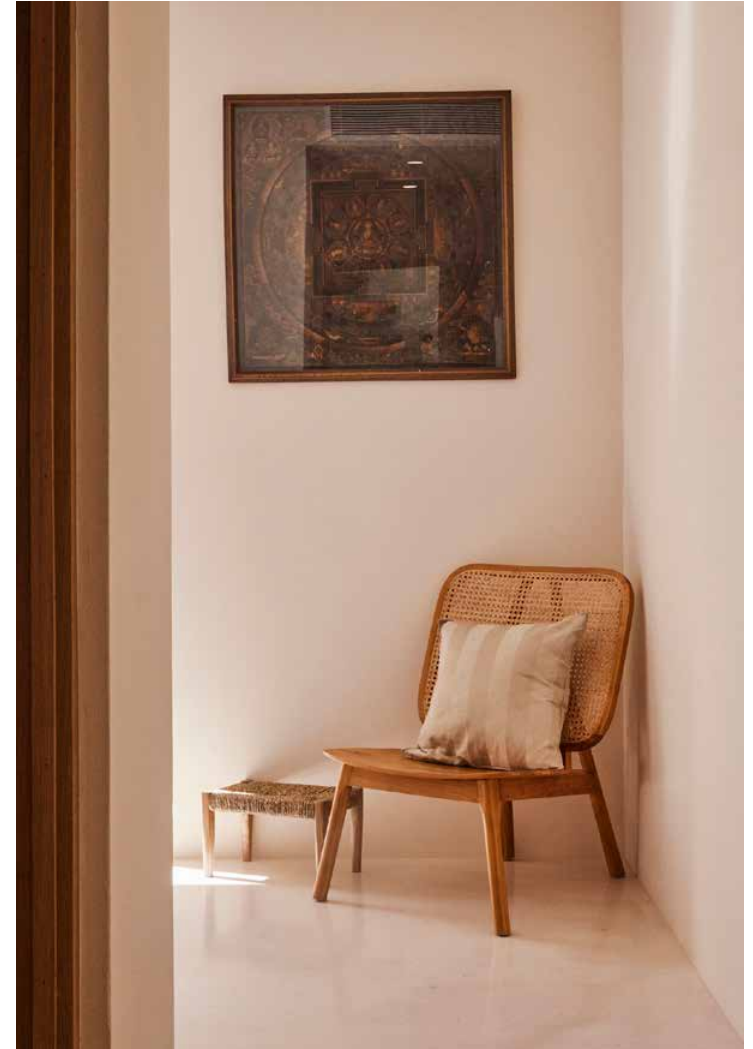


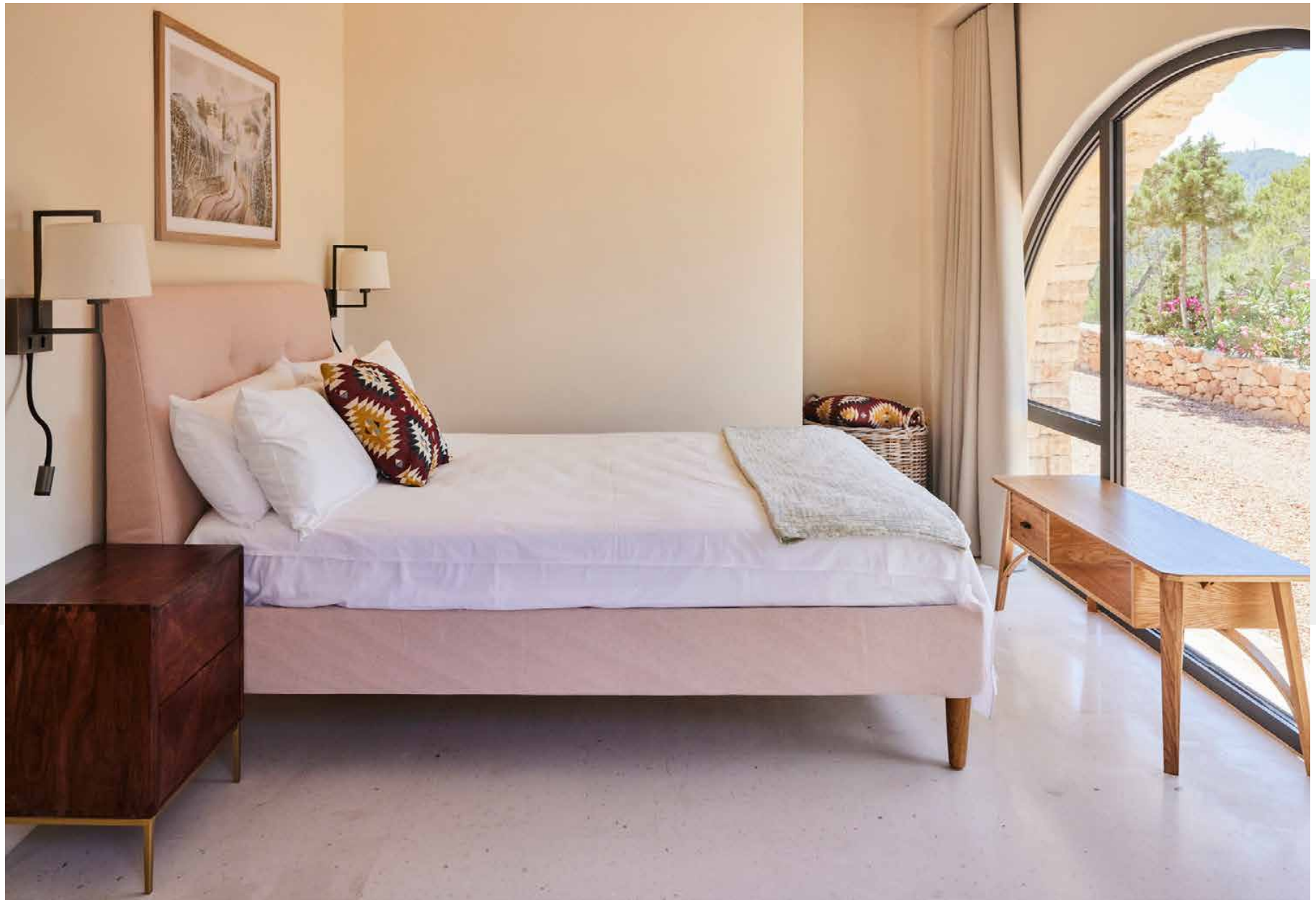


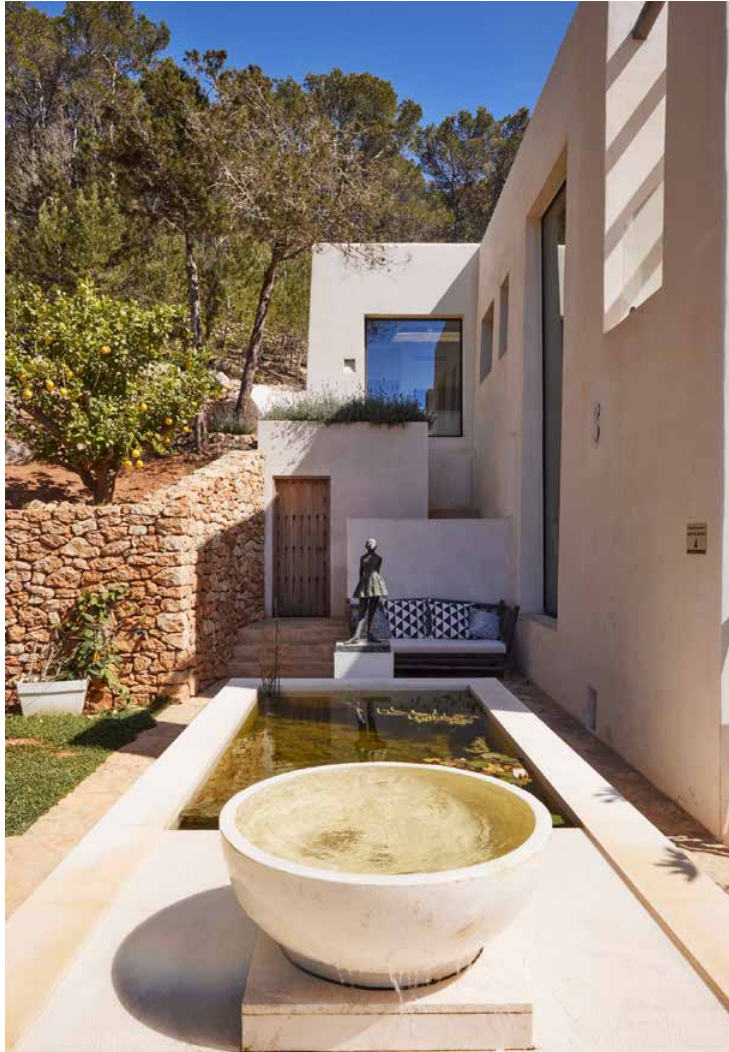














Property Details

Sea views

Open-plan kitchen, dining and reception room

Multiple terraces

Outdoor dining area

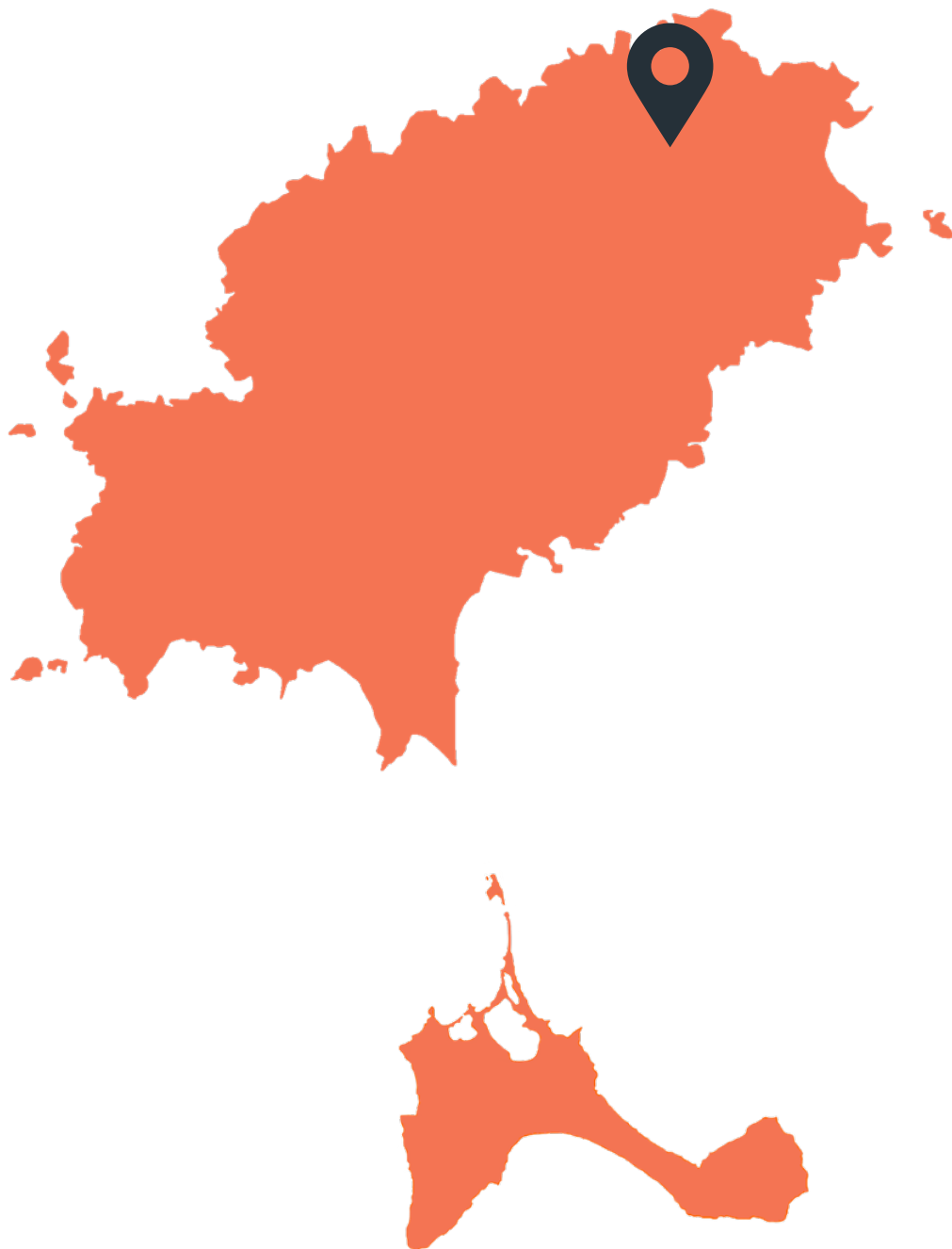
Infinity pool

Cinema room

Underfloor heating

31-day minimum stay

5 bedrooms, 5 bathrooms



Location

The unspoiled, rural north of the island is prime territory for a secluded getaway. Privacy comes naturally – though it's not hard to explore. The calm, crystalline waters of Cala Xarraca (don't miss its natural mud bath) and Portinatx's trio of exquisite beaches are easy to access. Make the most of the ideal snorkelling conditions or hike through the lush pine forests to the lighthouse near Playa Porto. The charming rural village of San Juan is just a short drive away, as are the livelier surrounds of Santa Gertrudis and its bars, restaurants and galleries.

Benirras – 12 mins

Ibiza Town – 25 mins

Ibiza Airport – 30 mins

Specialising in Ibiza and
London's design-led homes

Let's talk

+34 871 515 302

ibiza@domusnova.com

domusnova.com/ibiza

The property particulars are a guide not statements. Descriptions, photographs, and plans are for guidance and should be checked a prospective purchaser or tenant. The Property is offered "subject to contract". No warranties, representations, or Tenancy is given by Domus Nova. Expenses incurred by a prospective tenant or buyer will not be reimbursed if the Landlord or the Seller withdraws prior to the Tenancy Agreement being signed, dated and exchanged and cleared funds received. Further details of the Disclaimer together with trading names and our Privacy Policy is shown on our website The IVA position relating to the property may change without notice.

View our privacy policy on how your data is processed and used. To find out how we process Personal Data, please refer to our Privacy Statement and other notices at [Privacy Statement](#).

© Domus Nova 2024. All rights reserved.