

# DOMUS NOVA



Villa Amaya, Central Ibiza - € 10,950,000

In partnership with **BARNES**  
INTERNATIONAL REALTY



Set within 11,300m<sup>2</sup> of private woodland, Villa Amaya strays from the typical Ibizencan blueprint. Geometry drives the architecture – a collaboration between Jaime Serra and Bruno Reymond – all sweeping curves, towering double-height volumes and floor-to-ceiling glazing that pulls the landscape in.

The main living area is conceived as one continuous volume: a generous sweep of open space that anchors the home. Light reaches in from every angle, catching polished concrete floors and softening a predominantly clean-lined approach. Oversized sliding doors extend the footprint to the terrace, where day-to-day routines naturally migrate. Breakfasts unfold beneath the pergola; afternoons stretch out beside the 22-metre saltwater pool. Beyond, the grounds reward wandering, with natural paths threading through olive trees and orange groves. For those who prefer to keep active, a full-size tennis court awaits on more upbeat afternoons.

Back indoors, the sense of scale carries through to the kitchen and dining spaces. Streamlined cabinetry and Gaggenau appliances underpin a serious culinary set-up, with direct terrace access making alfresco dining an easy default.













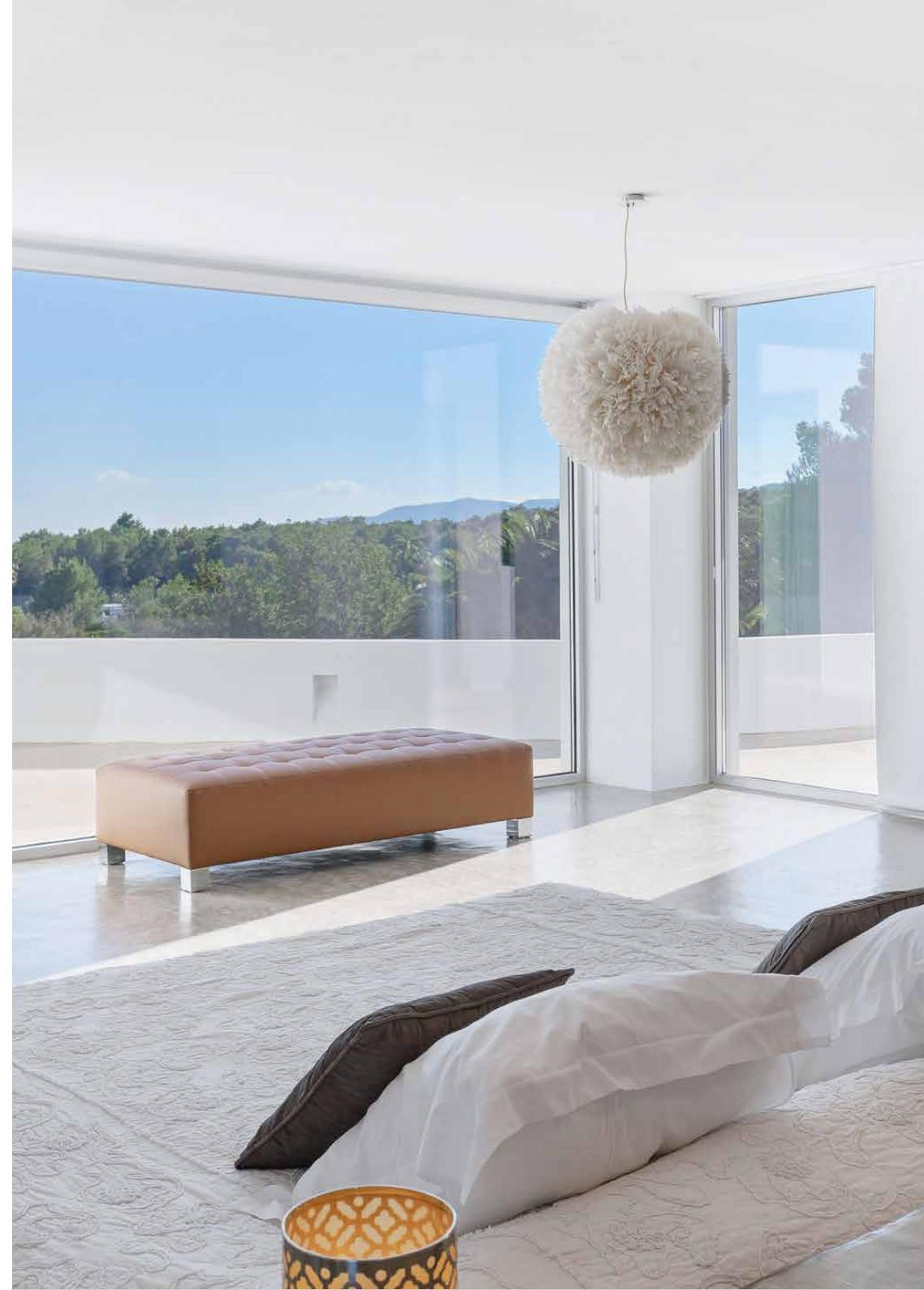


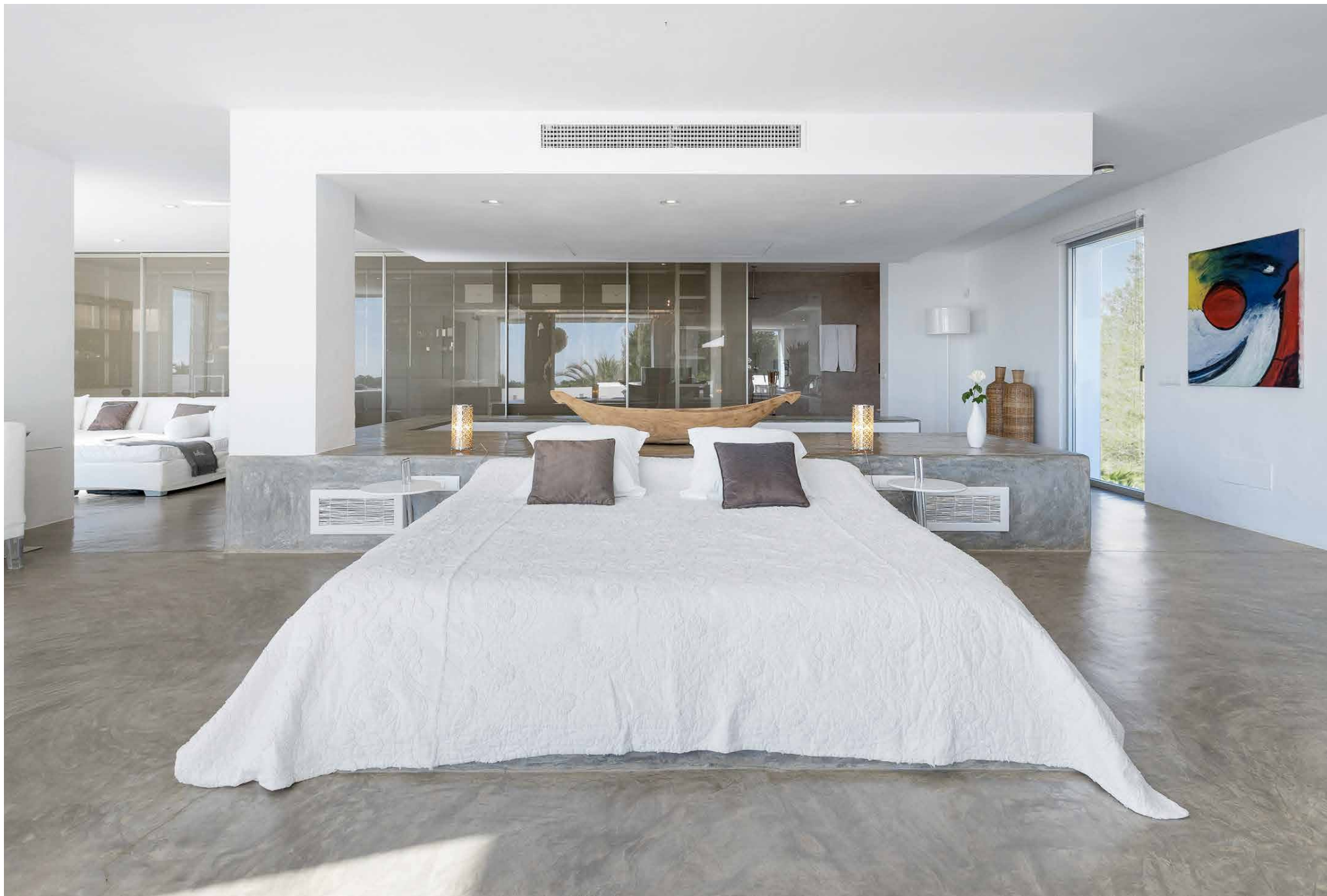






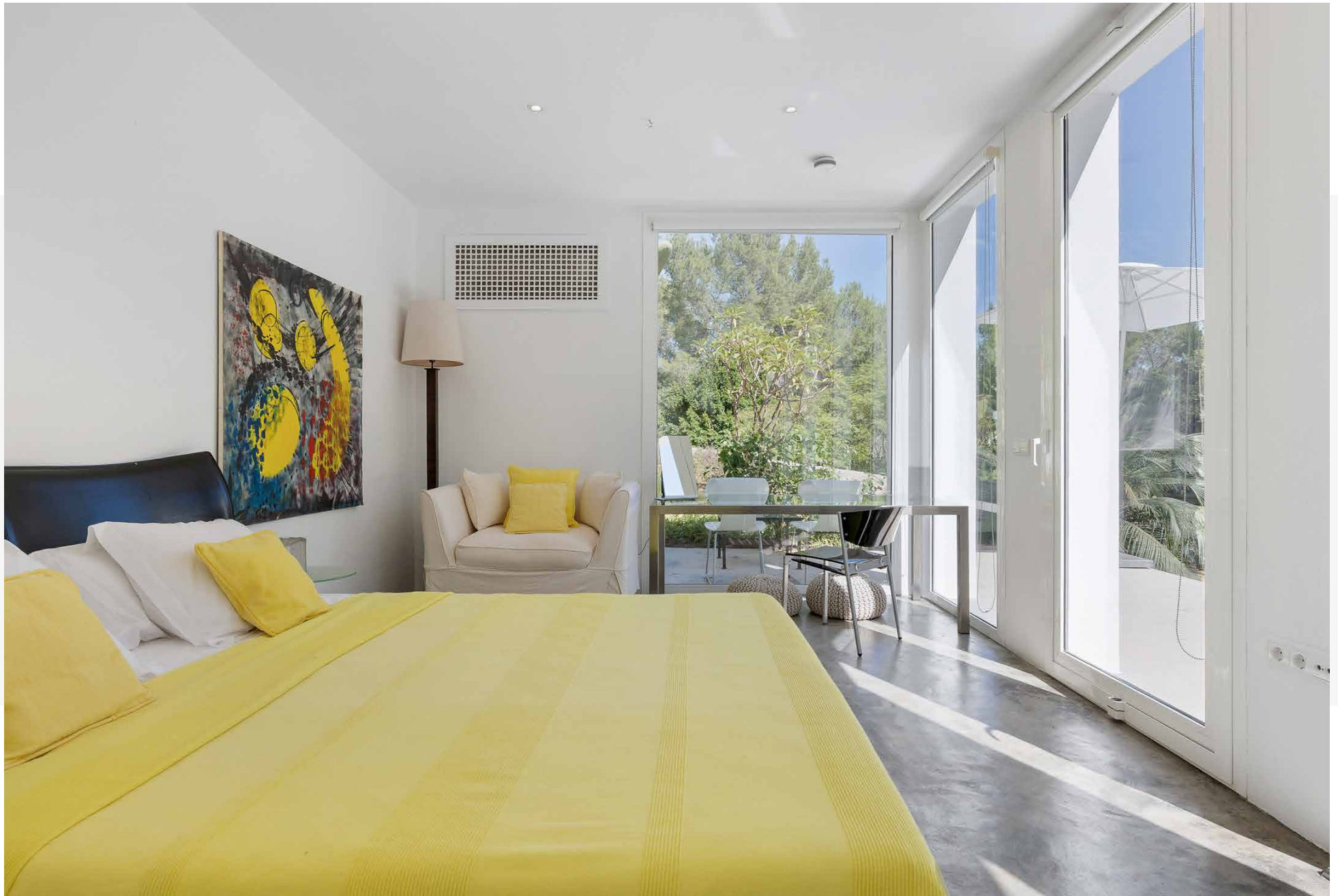
Come evening, seven bedroom suites have been arranged with care. The expansive principal suite opens to a private terrace with distant sea views, while four further bedrooms are spacious and considered. One benefits from its own private pool – heated and fitted with swim jets. Elsewhere, two guest suites enjoy privacy, positioned across the grounds with independent access.

















## Property Details

7 bedrooms, 7 bathrooms  
Italian-designed kitchen with Gaggenau appliances  
Double-height living space  
Mezzanine lounge  
Five bedrooms in the main villa  
Two guest suites with independent entrances  
Expansive terrace with saltwater swimming pool  
11,300m<sup>2</sup> grounds  
Pergola with outdoor dining area  
Indoor heated swimming pool  
Full-size tennis court  
Underfloor heating and AC  
Private well

Plot size: 11,300 sq m



## Location

Set just outside Santa Gertrudis, one of Ibiza's most sought-after villages, Can Palmyra balances seclusion with proximity. A short drive brings you to its lively square – known for its relaxed restaurants, artisan boutiques and year-round energy. From here, the island opens up easily: beaches to the north, Ibiza Town to the south. Back at home, the pace is altogether slower – surrounded by forest, with little to interrupt the stillness. For those relocating with children, acclaimed school Morna International College offers an international version of the British education system – teaching in both English and Spanish.

Santa Gertrudis – 6 mins

Ibiza Town – 15 mins

Ibiza airport – 19 mins



# Who ——— we are

Forward-thinkers in property, design and culture, we're an estate agency that hits refresh.

Domus Nova was born out of a desire to do things differently; to break the traditional agency model and focus on design-led homes in London and Ibiza, all while delivering the highest levels of personal service.

Our story starts in the nineties when we founded Notting Hill's first boutique agency – and we continue to open the doors to the most remarkable spaces, revealing them to our like-minded community.

We want to help you live better – and believe considered design can do that. That's why we remain committed to building on our legacy, in collaboration with BARNES International, an established agency with a market-leading presence in 22 countries.

Uniting our local insight and curated portfolio with BARNES International's expansive reach, we can facilitate the best opportunities in not only London and Ibiza, but also across Europe, the US and further afield – whether that's a château in the South of France, a penthouse in New York, or a chalet in the Swiss Alps.



# DOMUS NOVA

Specialising in London  
and Ibiza's design-led homes

Let's talk

+34 871 51 53 02

[ibiza@domusnova.com](mailto:ibiza@domusnova.com)

---

The property particulars are a guide not statements. Descriptions, photographs, and plans are for guidance and should be checked by a prospective purchaser or tenant. The Property is offered "subject to contract". No warranties, representations, or Tenancy is given by Domus Nova. Expenses incurred by a prospective tenant or buyer will not be reimbursed if the Landlord or the Seller withdraws prior to the Tenancy Agreement being signed, dated and exchanged and cleared funds received. Further details of the Disclaimer together with trading names and our Privacy Policy is shown on our website. The IVA position relating to the property may change without notice.

View our privacy policy on how your data is processed and used. To find out how we process Personal Data, please refer to our Privacy Statement and other notices at [Privacy Statement](#).

© 2026 Domus Nova in partnership with BARNES International. All rights reserved.

*In partnership with*  
**BARNES**  
INTERNATIONAL REALTY