

DOMUS NOVA

Vicarage Gate

Kensington W8

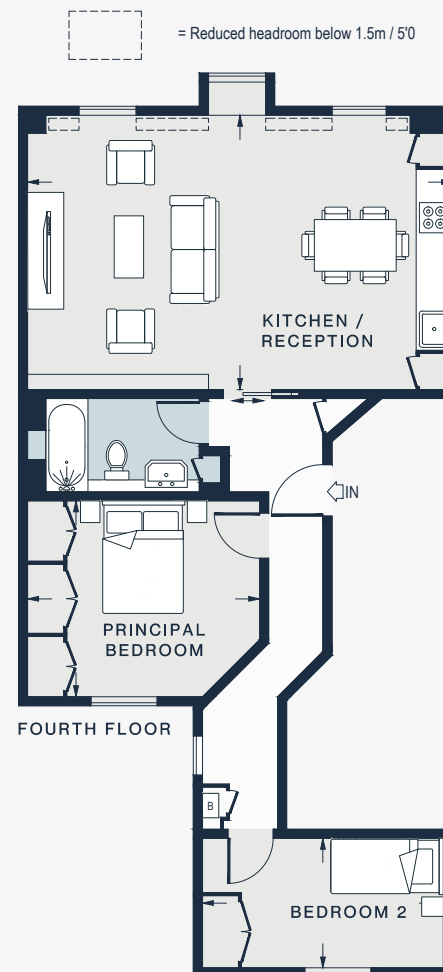
APPROXIMATE GROSS INTERNAL AREA

746 sq ft / 69.3 sq m

020 7221 7817

domusnova.com

LONDON | IBIZA



KITCHEN / RECEPTION
23'1 x 14'11 (7.0m x 4.5m)

PRINCIPAL BEDROOM
12'8 x 10'7 (3.8m x 3.2m)

BEDROOM
13'1 x 7'0 (4.0m x 2.1m)

Floor plans are for illustrative purposes only and not to scale. Compliant with RICS code of measuring practice. Furniture layouts are indicative only. This property may be furnished, part-furnished or unfurnished. Please refer to your agent for details.