

# DOMUS NOVA



Vicarge Gate W8  
£5,000 p/w - Short Let



A minimalist masterstroke. This three-bedroom apartment in Kensington is a haven of clean lines and gallery-like proportions.

Through a private entrance on a regal street in Kensington, period details fade away. A sculptural chandelier crowns the entranceway of this design-forward home. Beyond, hardwood flooring flows into a magnetic split-level reception room.

A serene space, this open-plan kitchen and living area is an ode to the pared-back aesthetic. Whitewashed walls floors and ceilings create an airy and uplifting atmosphere. The kitchen features full-height cabinetry, built-in appliances and a marble waterfall island with an integrated extractor. A large dining space, backdropped by quirky artwork, has seating for eight.

Up a handful of steps, the space expands into a double-height living area. A south-facing bay window is generous with natural light, illuminating thoughtful design decisions. The high ceiling is framed by intricate cornicing – a subtle nod to the home's period framework.









A refined palette continues into the principal bedroom. This space features expansive proportions, fitted floor-to-ceiling wardrobes and a tiled en suite bathroom with a bathtub and a countertop basin.

Two further bedrooms are calming sanctuaries of considered design. A tiled family bathroom features modern fittings and a console basin. At the rear of the property, a private terrace provides a secluded outdoor hideaway.



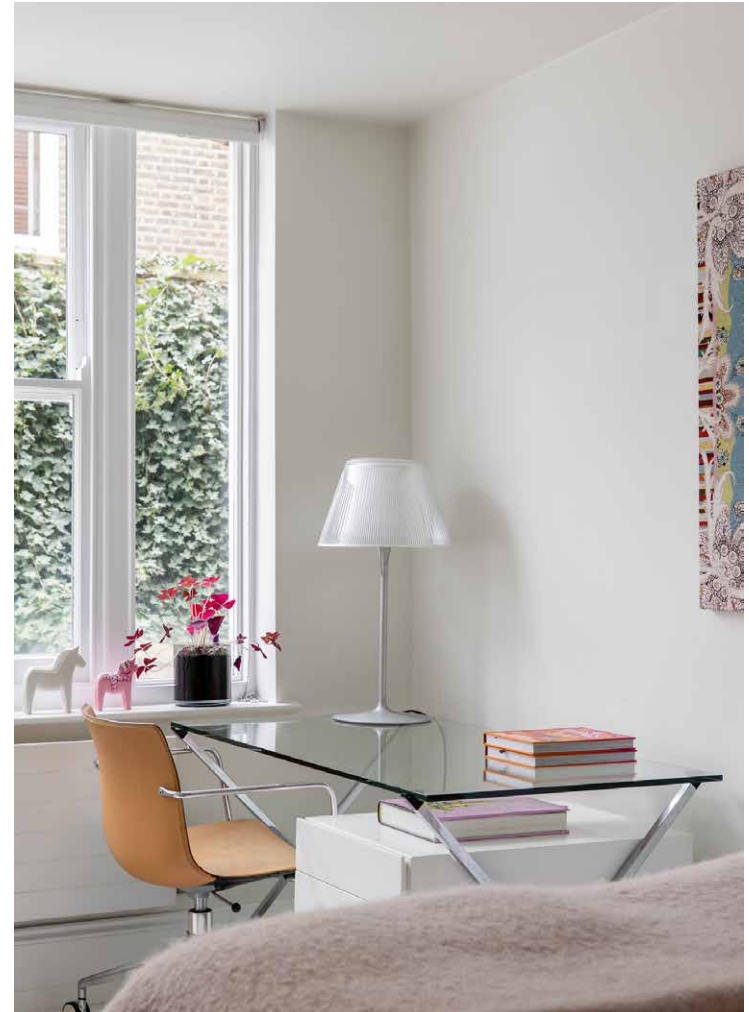




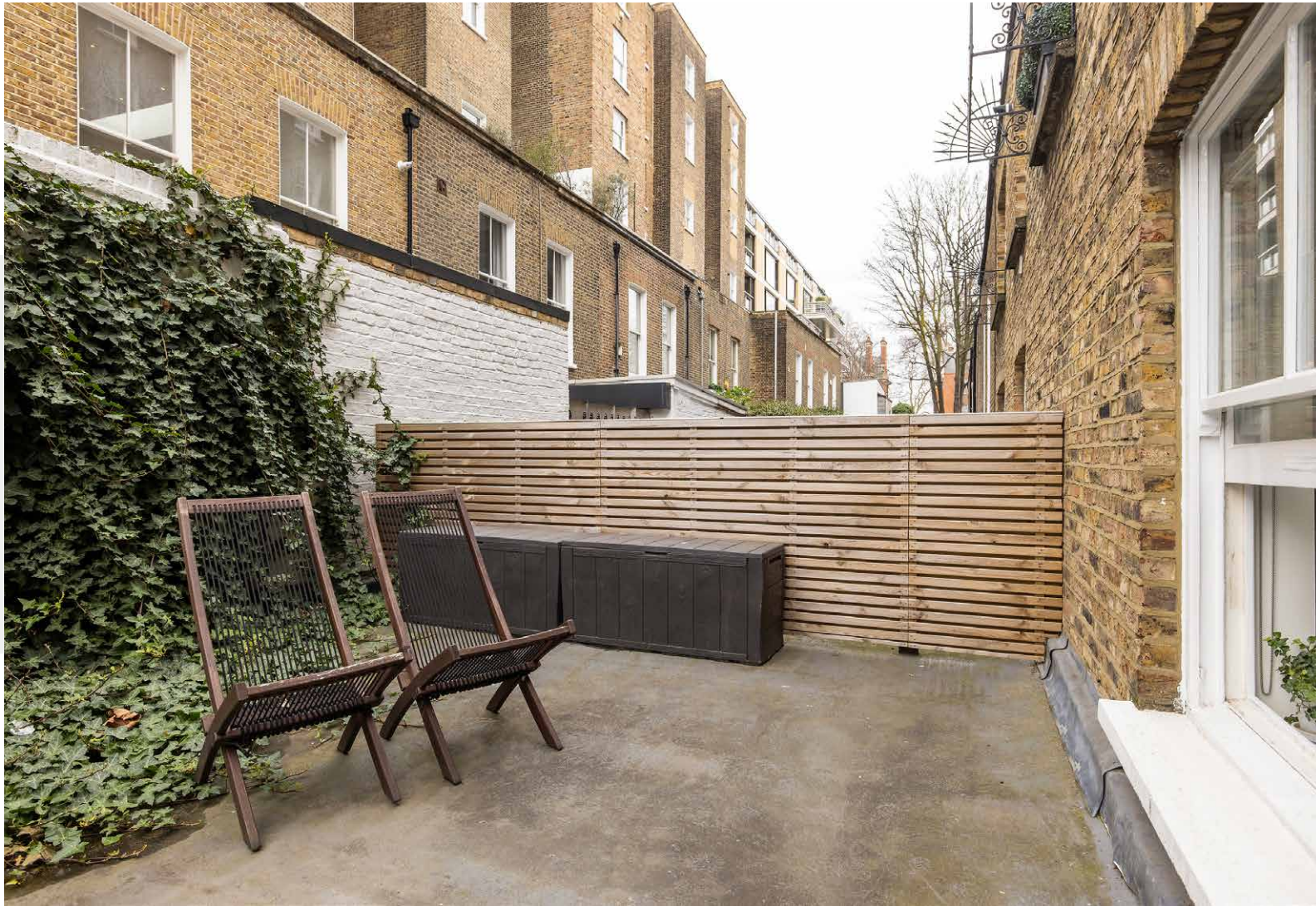




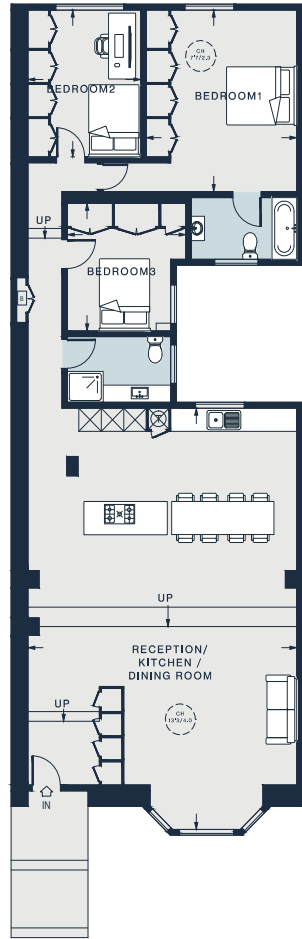












RAISED GROUND FLOOR

RECEPTION/KITCHEN/  
DINING ROOM  
35'8 x 23'5 (10.9m x 7.1m)

BEDROOM 1  
16'11 x 15'5 (5.1m x 4.7m)

BEDROOM 2  
12'6 x 9'11 (3.8m x 3.0m)

BEDROOM 3  
10'9 x 9'2 (3.3m x 2.8m)

Approx. Gross Internal Area = 1,441 sq ft / 133.9 sq m

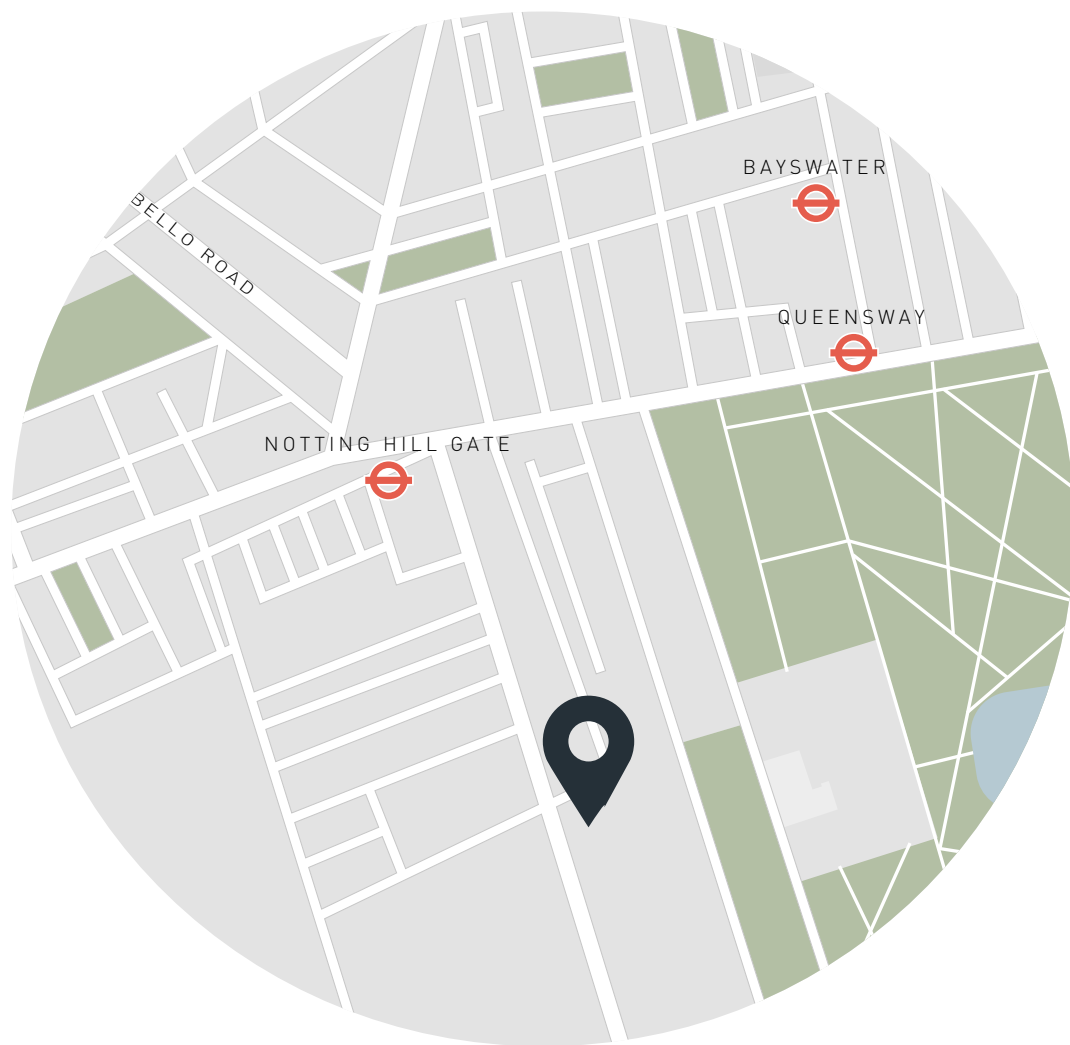
Floor plans are for illustrative purposes only and not to scale. Compliant with RICS code of measuring practice. Furniture layouts are indicative only. This property may be furnished, part-furnished or unfurnished. Please refer to your agent for details.

## Property Details

- Open-plan kitchen and reception room
- Double-height living area
- Principal bedroom suite
- Two further bedrooms
- Family bathroom
- Private terrace
- Royal Borough of Kensington & Chelsea

- Approx 1,441 sq ft / 133.9 sq m
- Deposit Payable - £20,000
- Council Tax Band - G





## Location

Vicarage Gate is a quiet cul-de-sac in Kensington. This quintessentially English part of London is a stone's throw from Kensington Gardens and the wooded walks and manicured gardens of Hyde Park. The area is also replete with shops and restaurants. For retail therapy, head to Kensington High Street then to Kitchen W8 for a Michelin-starred European menu or to Clarke's for farm-to-table dining. Adorned in foliage, the famed Churchill Arms is just five minutes away.

Nearest tube:

High Street Kensington - 7 mins

Notting Hill Gate - 8 mins

Specialising in London  
and Ibiza's design-led homes

Let's talk  
020 7727 1717  
lettings@domusnova.com  
domusnova.com

The property particulars are a guide not statements. Descriptions, photographs, and plans are for guidance and should be checked by the prospective tenant. The Property is offered "subject to contract and references". No warranties, representations, or Tenancy is given by Domus Nova. Expenses incurred by a prospective tenant will not be reimbursed if the Landlord withdraws prior to the Tenancy Agreement being signed, dated and exchanged and cleared funds received. Furniture and other items shown in a property at viewing may belong to a current tenant. The prospective tenant should verify in writing which fixtures and fittings forms part of the Tenancy. Our full lettings disclaimer together with trading names and our [Privacy Policy](#) is shown on our website