

# DOMUS NOVA



Upper Montagu Street W1H  
£1,850 p/w Long let & £3,500 p/w Short Let



Interjections of geometric design lend an eclectic air to this three-bedroom apartment for rent in Marylebone. Beyond a regal red-brick façade, abstract-inspired design by Retrouvius balances striking architectural elements with sophisticated style. Defying the expectations of its traditional exterior, an interplay of light, tone and texture creates interiors with a timeless appeal.

Instantly uplifting, the entrance gives way to a sky-lit dining space enveloped in a peach-pink hue. An inspiring central hub, visually striking doorways enclose or connect the room with the home's living, cooking and sleeping quarters. Through a playfully slanted double-doorway, a grand reception area is encased in soft natural light from a large bay window. A warm earthy palette establishes an inviting ambience, soft furnishings in muted shades of green and blush creating tranquil spots to unwind. For a breath of fresh air and uninterrupted city views, there's a small balcony. Accessed from the opposite side, a contemporary kitchen is revived with reclaimed materials. Rich wooden cabinetry forms the L-shaped space, with sections of original wood framed behind glass panels.











“ A warm earthy palette establishes an inviting ambiance, soft furnishings in muted shades of green and blush creating tranquil spots to unwind.























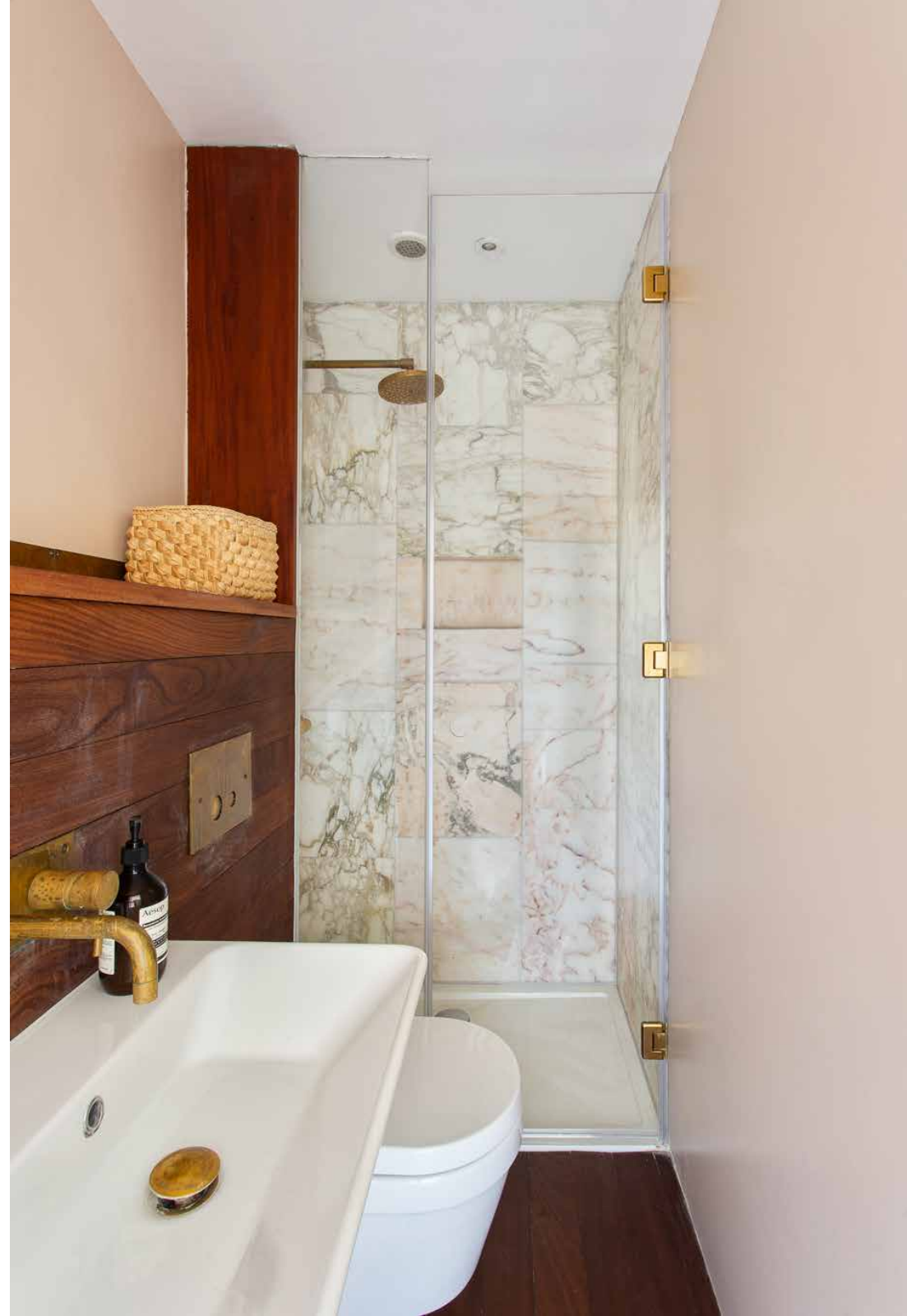
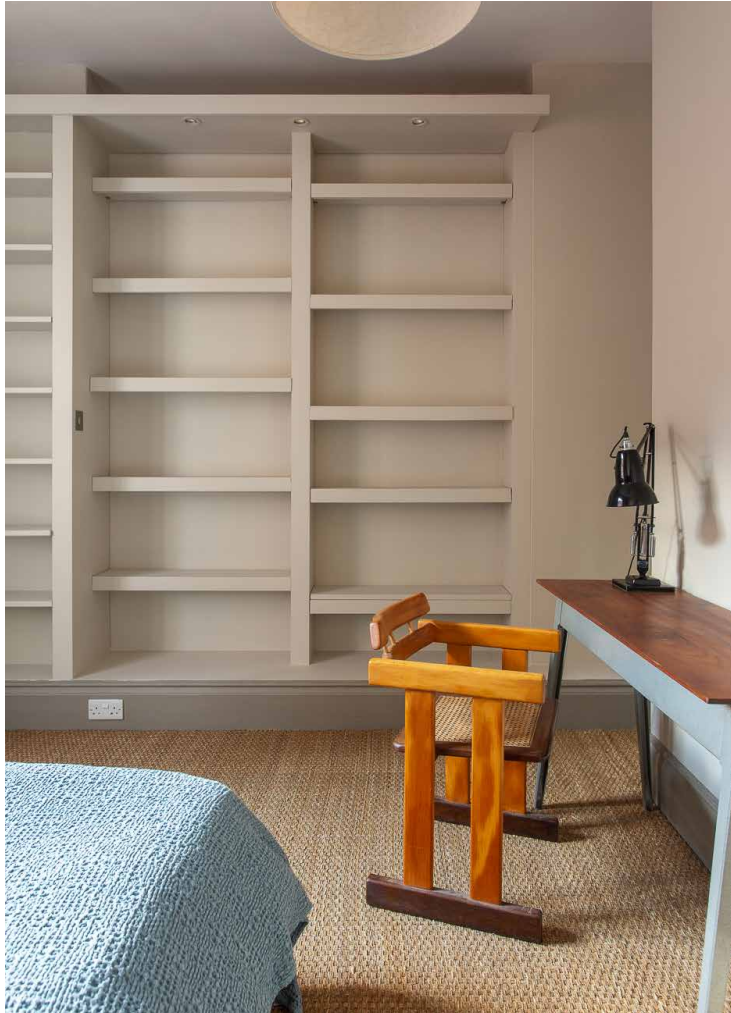
Arranged around the central space, three restful bedrooms are characterised by tonal shades of blue, green and blush. The principal suite takes on a calming tone, its light beige walls grounded by dark wooden flooring and vibrant pops of green. Pastel pink enlivens the en suite bathroom, emphasising the warm flecks of a marble wrapped rainfall shower. Two further bedrooms – each with integrated storage – are served by a deep green family bathroom with an opulent roll-top bathtub.





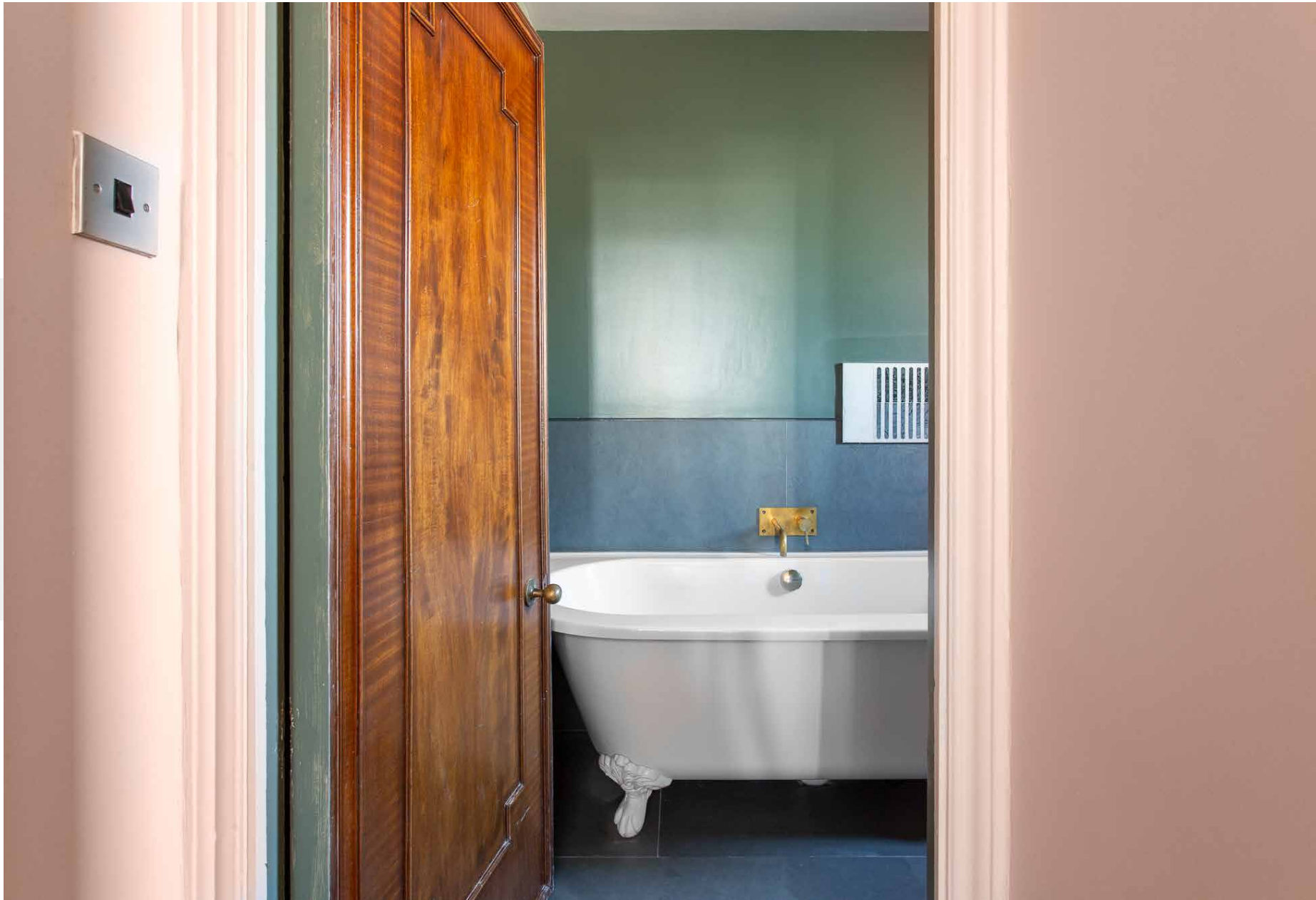




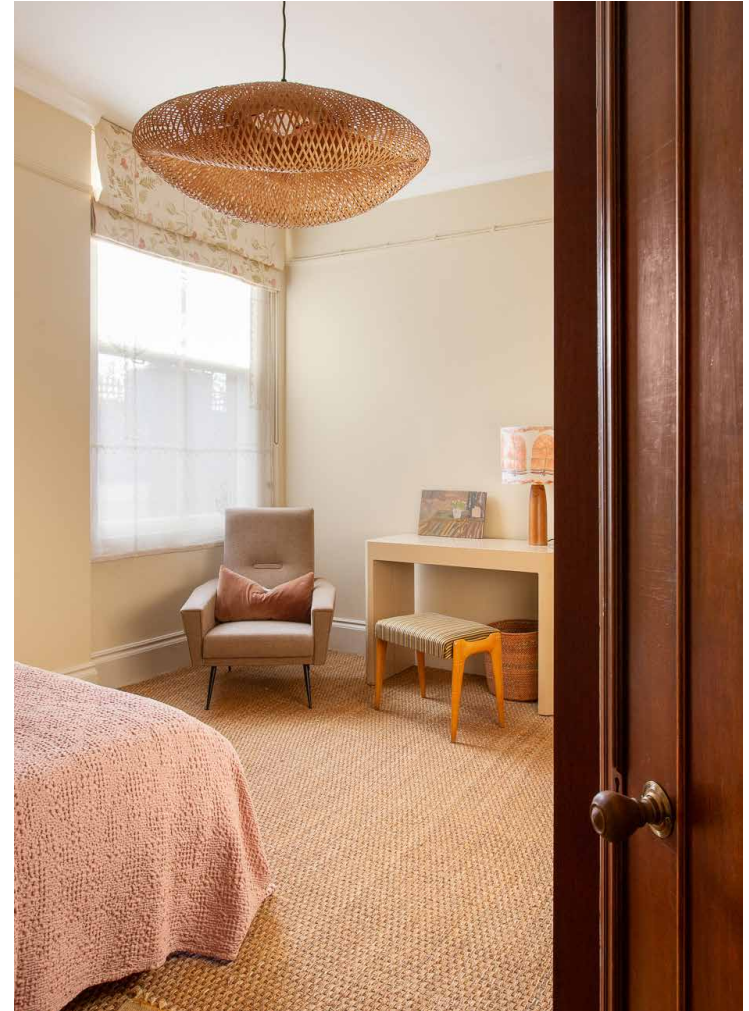




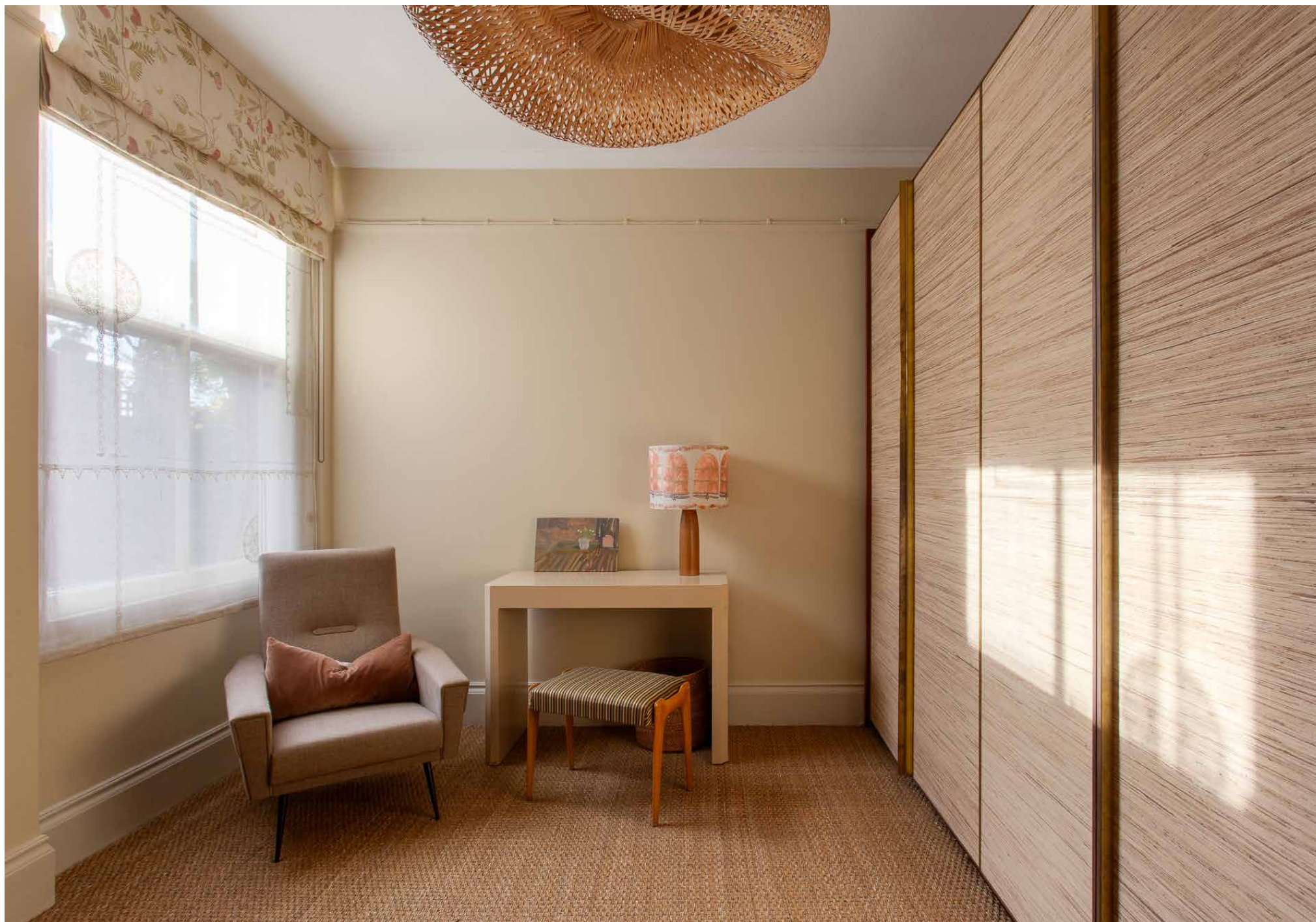
















RECEPTION 20'10 x 18'10 (6.3m x 5.7m)	BEDROOM 21'2 x 15'6 (6.4m x 4.7m)	DINING 21'11 x 13'11 (6.6m x 4.2m)
KITCHEN 9'5 x 7'5 (2.8m x 2.2m)	BEDROOM 12'7 x 10'7 (3.8m x 3.2m)	BEDROOM 14'8 x 10'10 (4.4m x 3.3m)

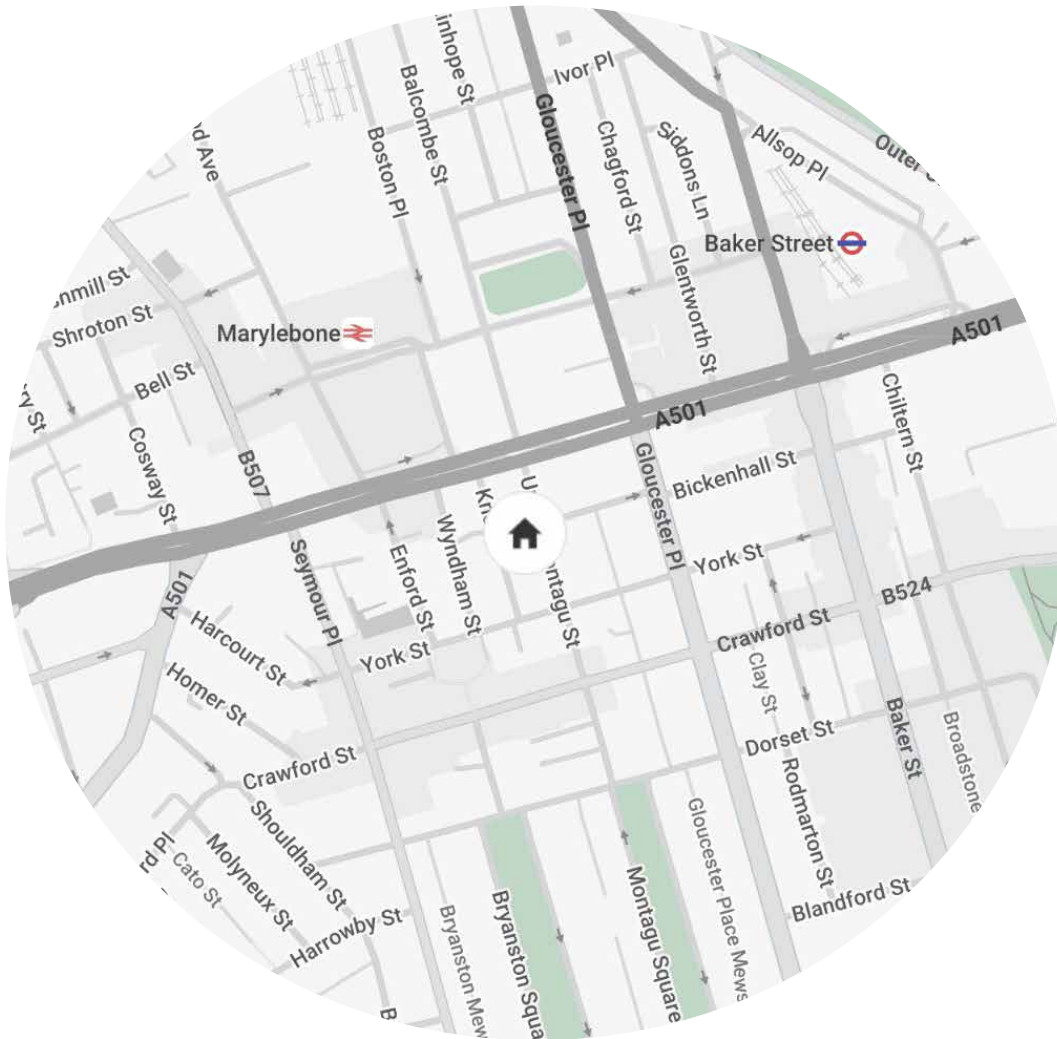
Approx. Gross Internal Area = 1,528 sq ft / 142 sq m

Floor plans are for illustrative purposes only and not to scale. Compliant with RICS code of measuring practice.  
Furniture layouts are indicative only. This property may be furnished, part-furnished or unfurnished. Please refer to your agent for details.

## Property Details

Large reception room  
Contemporary kitchen  
Dining room  
Principal bedroom suite  
Two guest bedrooms  
Family bathroom  
Balcony  
City of Westminster

Approx. 1,528 sq ft / 142 sq m  
Council Tax Band - G  
EPC - E  
Deposit Payable - £11,100 (LL) & £14,000 (SL)



## Location

Enjoying a best of both worlds feel, Upper Montagu Street has the tranquil gardens of Regent's Park to one side, and the boutique-lined streets of Marylebone to the other. Start the day with a leisurely stroll around Regent's Park, then wander down through Marylebone High Street. Browse the latest selection at Daunt Books, then enjoy Grecian-inspired delights at Opso. Post-lunch, visit the art galleries of Bond Street, just a short walk away. Come evening, enjoy dinner with an art-deco ambiance at Clarette, or sushi at Dinings.

Edgware Road - 10 mins (Central, Hammersmith and District)  
 Marylebone - 7 mins (Bakerloo)



Specialising in London  
and Ibiza's design-led homes

Let's talk  
020 7727 1717  
lettings@domusnova.com  
domusnova.com

The property particulars are a guide not statements. Descriptions, photographs, and plans are for guidance and should be checked by the prospective tenant. The Property is offered "subject to contract and references". No warranties, representations, or Tenancy is given by Domus Nova. Expenses incurred by a prospective tenant will not be reimbursed if the Landlord withdraws prior to the Tenancy Agreement being signed, dated and exchanged and cleared funds received. Furniture and other items shown in a property at viewing may belong to a current tenant. The prospective tenant should verify in writing which fixtures and fittings forms part of the Tenancy. Our full lettings disclaimer together with trading names and our [Privacy Policy](#) is shown on our website