

DOMUS NOVA



Upper Montagu Street, WIH – £2,000 p/w (LL) £3,500 p/w (SL)

In partnership with **BARNES**
INTERNATIONAL REALTY



Interjections of geometric design lend an eclectic air to this three-bedroom apartment for rent in Marylebone. Beyond a regal red-brick façade, abstract-inspired design by Retrouvius balances striking architectural elements with sophisticated style. Defying the expectations of its traditional exterior, an interplay of light, tone and texture creates interiors with a timeless appeal.

Instantly uplifting, the entrance gives way to a sky-lit dining space enveloped in a peach-pink hue. An inspiring central hub, visually striking doorways enclose or connect the room with the home's living, cooking and sleeping quarters. Through a playfully slanted double-doorway, a grand reception area is encased in soft natural light from a large bay window. A warm earthy palette establishes an inviting ambiance, soft furnishings in muted shades of green and blush creating tranquil spots to unwind. For a breath of fresh air and uninterrupted city views, there's a small balcony. Accessed from the opposite side, a contemporary kitchen is revived with reclaimed materials. Rich wooden cabinetry forms the L-shaped space, with sections of original wood framed behind glass panels.







A warm earthy palette establishes an inviting ambiance, soft furnishings in muted shades of green and blush creating tranquil spots to unwind.









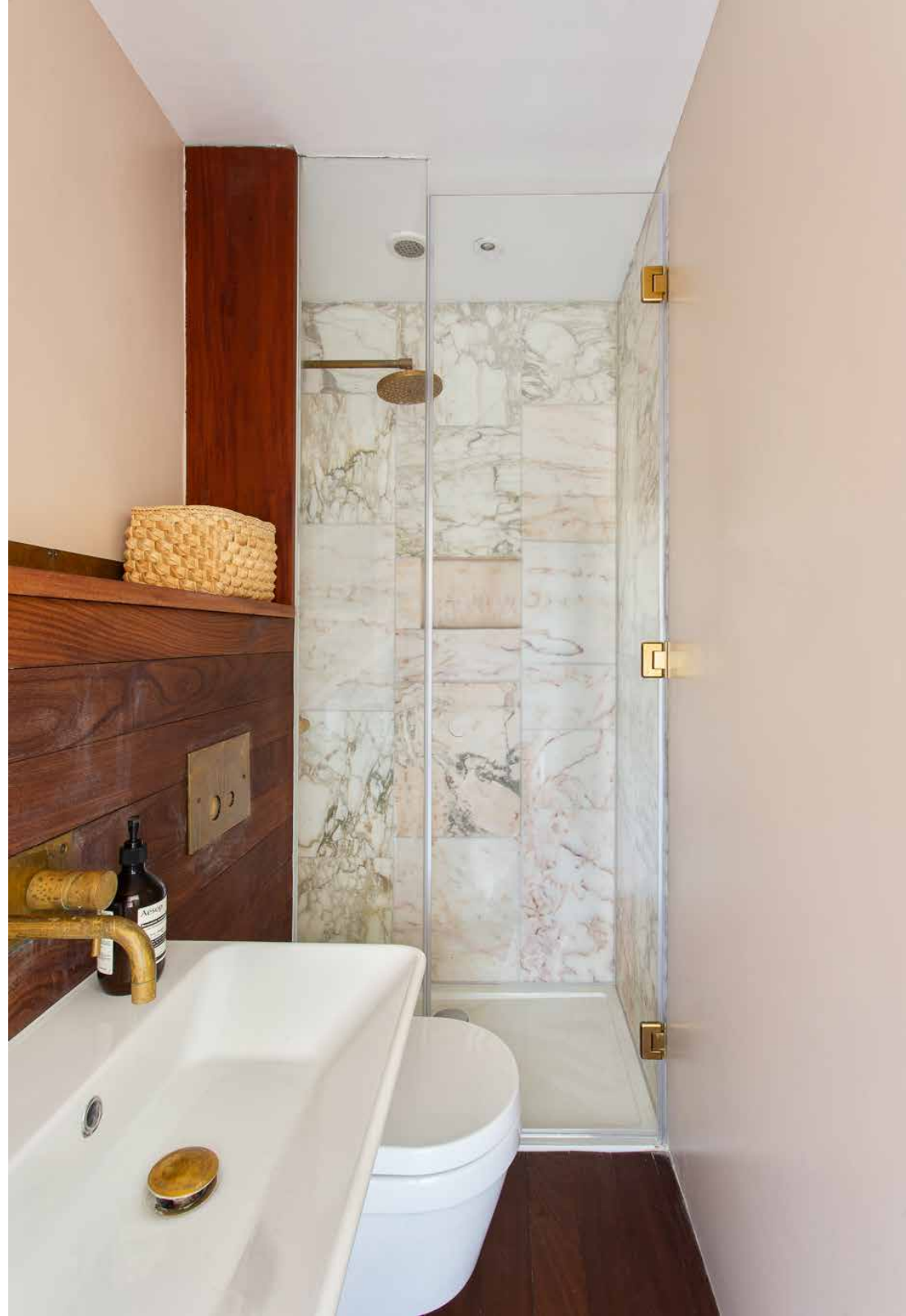




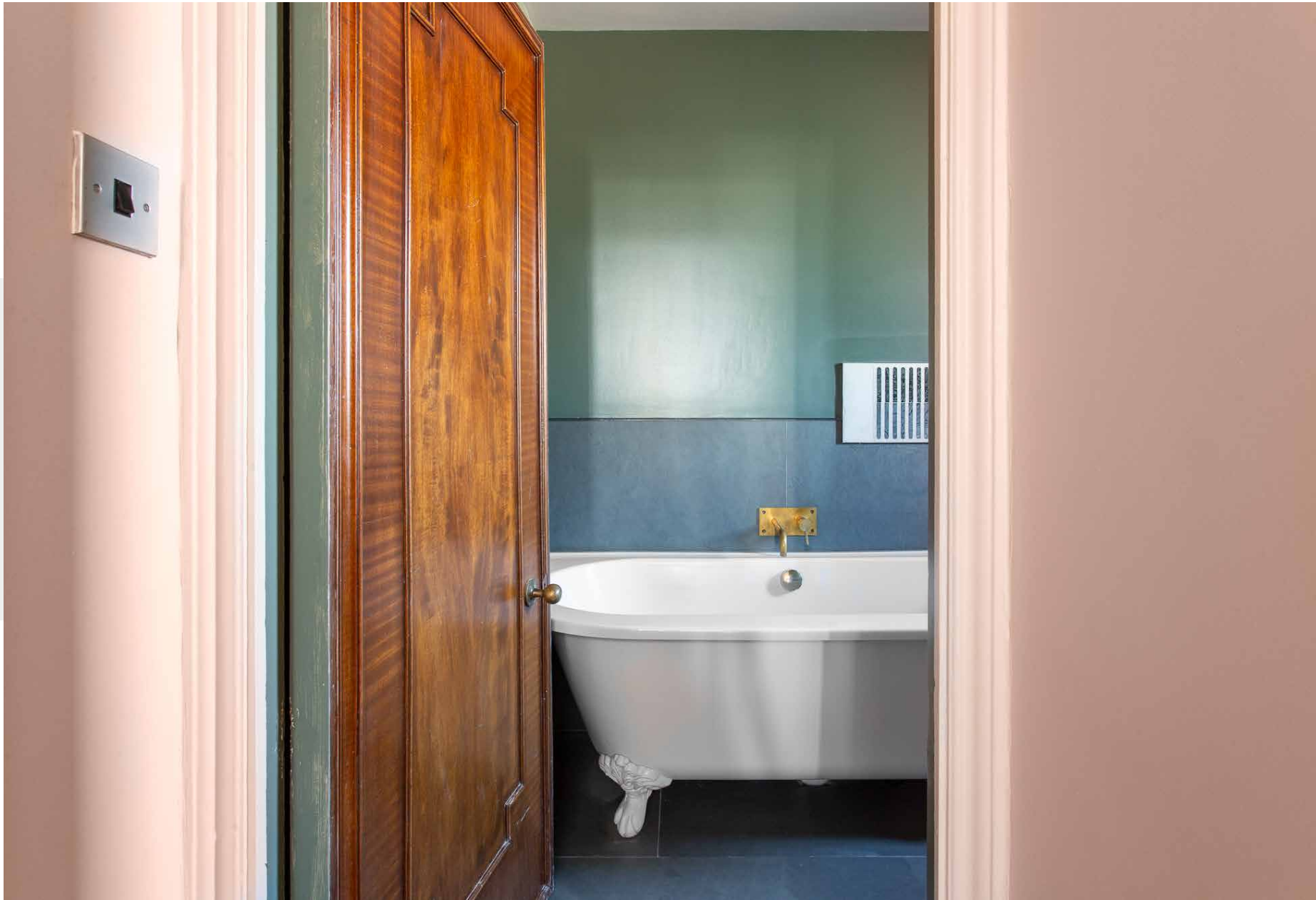
Arranged around the central space, three restful bedrooms are characterised by tonal shades of blue, green and blush. The principal suite takes on a calming tone, its light beige walls grounded by dark wooden flooring and vibrant pops of green. Pastel pink enlivens the en suite bathroom, emphasising the warm flecks of a marble wrapped rainfall shower. Two further bedrooms – each with integrated storage – are served by a deep green family bathroom with an opulent roll-top bathtub.

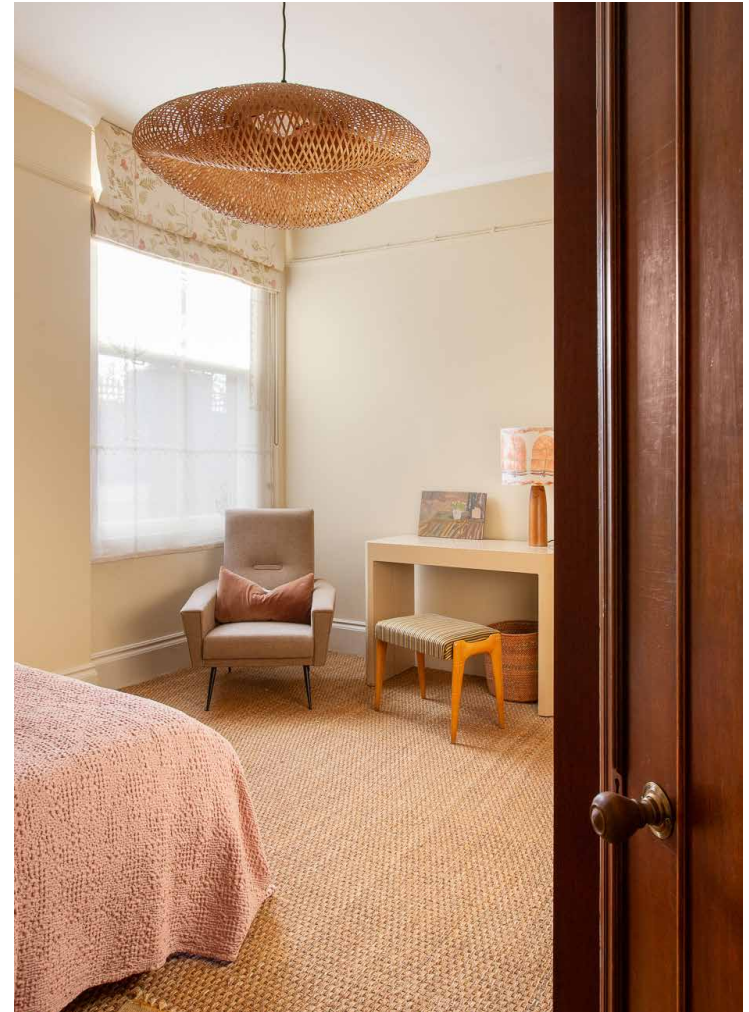
















FIFTH FLOOR

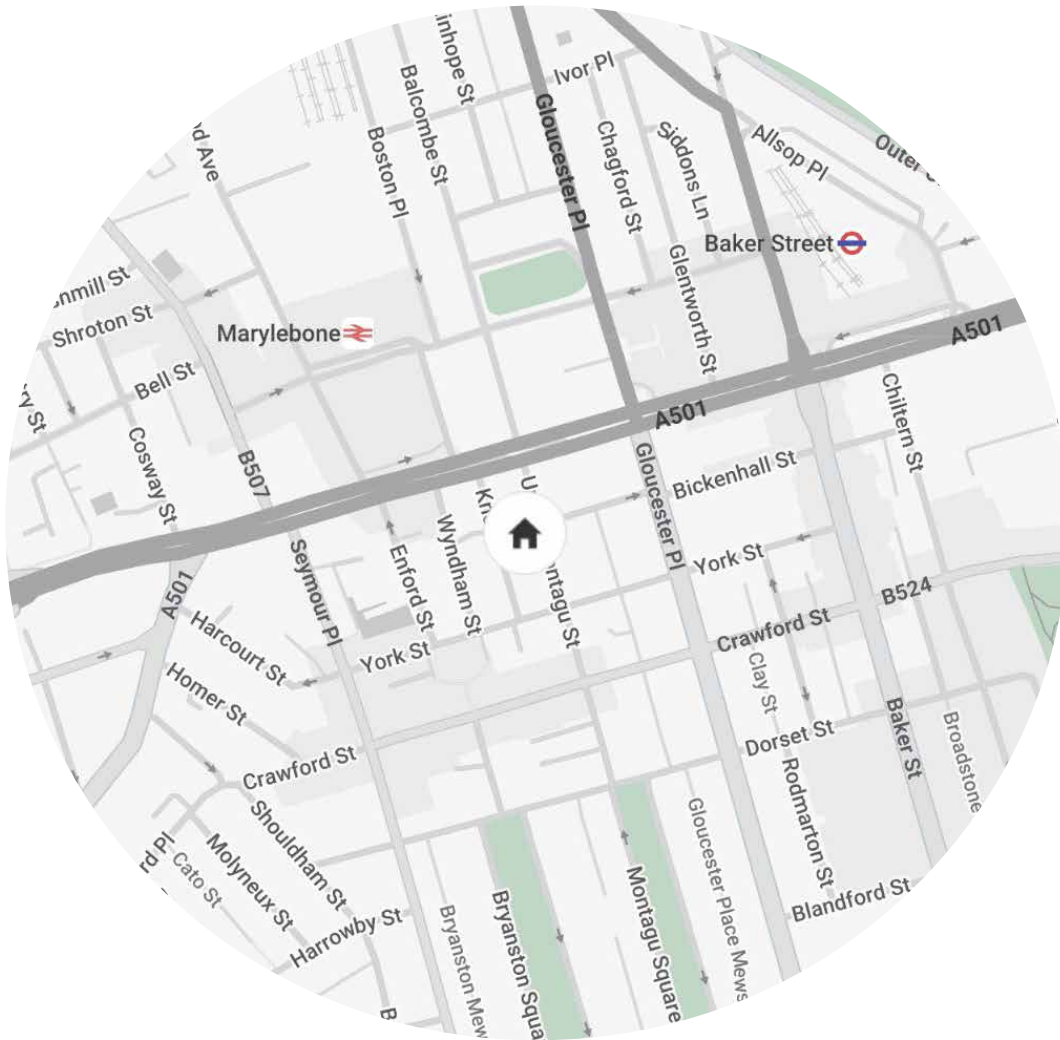
RECEPTION 20'10 x 18'10 (6.3m x 5.7m)	BEDROOM 21'2 x 15'6 (6.4m x 4.7m)	DINING 21'11 x 13'11 (6.6m x 4.2m)
KITCHEN 9'5 x 7'5 (2.8m x 2.2m)	BEDROOM 12'7 x 10'7 (3.8m x 3.2m)	BEDROOM 14'8 x 10'10 (4.4m x 3.3m)

Approx. Gross Internal Area = 1,528 sq ft / 142 sq m

Property Details

Large reception room
 Contemporary kitchen
 Dining room
 Principal bedroom suite
 Two guest bedrooms
 Family bathroom
 Balcony
 City of Westminster

Approx. 1,528 sq ft / 142 sq m
 Council Tax Band - G
 EPC - E
 Deposit Payable - £12,000 (LL) / £14,000 (SL)



Location

Enjoying a best of both worlds feel, Upper Montagu Street has the tranquil gardens of Regent's Park to one side, and the boutique-lined streets of Marylebone to the other. Start the day with a leisurely stroll around Regent's Park, then wander down through Marylebone High Street. Browse the latest selection at Daunt Books, then enjoy Grecian-inspired delights at Opso. Post-lunch, visit the art galleries of Bond Street, just a short walk away. Come evening, enjoy dinner with an art-deco ambiance at Clarette, or sushi at Dinings.

Edgware Road - 10 mins (Central, Hammersmith and District)
Marylebone - 7 mins (Bakerloo)



Who ——— we are

Forward-thinkers in property, design and culture, we're an estate agency that hits refresh.

Domus Nova was born out of a desire to do things differently; to break the traditional agency model and focus on design-led homes in London and Ibiza, all while delivering the highest levels of personal service.

Our story starts in the nineties when we founded Notting Hill's first boutique agency – and we continue to open the doors to the most remarkable spaces, revealing them to our like-minded community.

We want to help you live better – and believe considered design can do that. That's why we remain committed to building on our legacy, in collaboration with BARNES International, an established agency with a market-leading presence in 22 countries.

Uniting our local insight and curated portfolio with BARNES International's expansive reach, we can facilitate the best opportunities in not only London and Ibiza, but also across Europe, the US and further afield – whether that's a château in the South of France, a penthouse in New York, or a chalet in the Swiss Alps.



DOMUS NOVA

Specialising in London
and Ibiza's design-led homes

Let's talk

020 7727 1717

lettings@domusnova.com

The property particulars are a guide not statements. Descriptions, photographs, and plans are for guidance and should be checked by the prospective tenant. The Property is offered "subject to contract and references". No warranties, representations, or Tenancy is given by Domus Nova. Expenses incurred by a prospective tenant will not be reimbursed if the Landlord withdraws prior to the Tenancy Agreement being signed, dated and exchanged and cleared funds received. Furniture and other items shown in a property at viewing may belong to a current tenant. The prospective tenant should verify in writing which fixtures and fittings forms part of the Tenancy. Our full lettings disclaimer together with trading names and our [Privacy Policy](#) is shown on our website

© 2025 Domus Nova in partnership with BARNES International. All rights reserved.

In partnership with
BARNES
INTERNATIONAL REALTY