

# DOMUS NOVA

Upper Montagu Street

Marylebone W1H

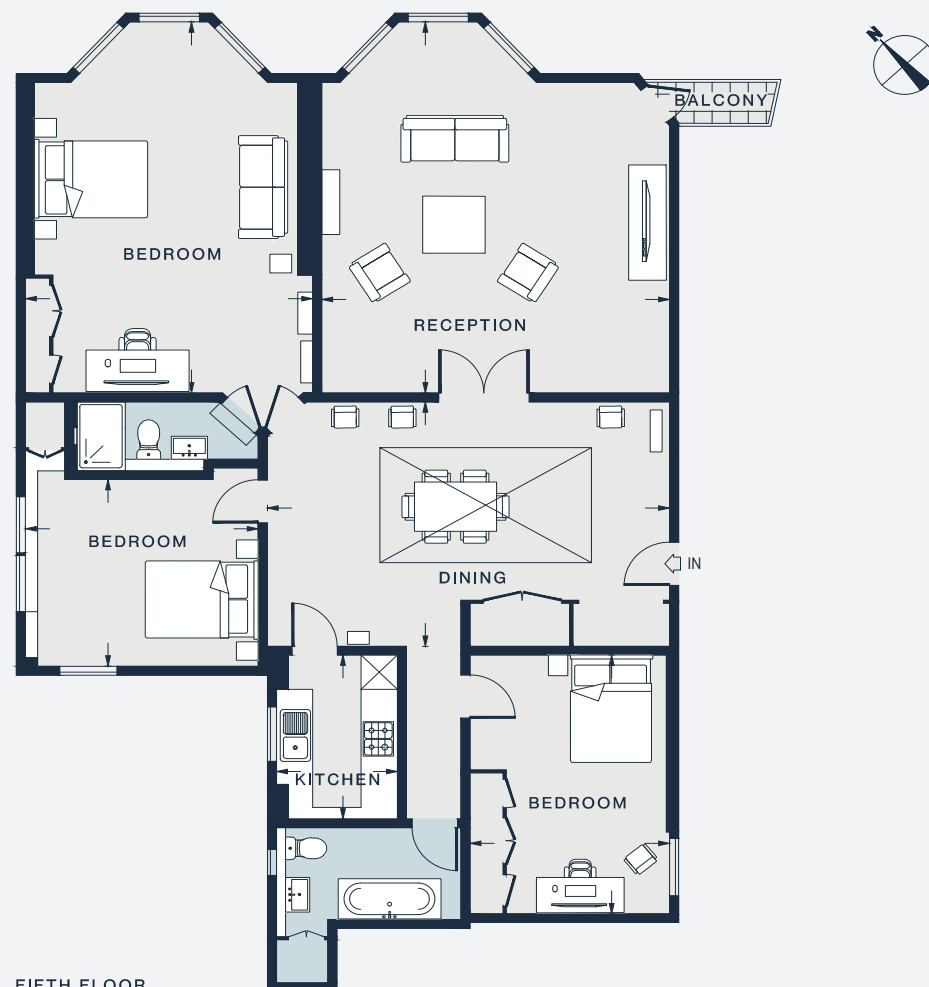
APPROXIMATE GROSS INTERNAL AREA

1,528 sq ft / 142 sq m

020 7727 1717

domusnova.com

LONDON | IBIZA



FIFTH FLOOR

RECEPTION  
20'10" x 18'10" (6.3m x 5.7m)

BEDROOM  
21'2" x 15'6" (6.4m x 4.7m)

DINING  
21'11" x 13'11" (6.6m x 4.2m)

KITCHEN  
9'5" x 7'5" (2.8m x 2.2m)

BEDROOM  
12'7" x 10'7" (3.8m x 3.2m)

BEDROOM  
14'8" x 10'10" (4.4m x 3.3m)

Approx. Gross Internal Area = 1,528 sq ft / 142 sq m

Floor plans are for illustrative purposes only and not to scale. Compliant with RICS code of measuring practice. Furniture layouts are indicative only. This property may be furnished, part-furnished or unfurnished. Please refer to your agent for details.