

# DOMUS NOVA



Tregunter Road SW10 – £2,200 p/w (SL)

In partnership with **BARNES**  
INTERNATIONAL REALTY



There's a quiet clarity to this lateral Chelsea home, creatively crafted by Charlie Ilett Design. Set on the second floor of a tall blonde-brick townhouse, this is a home that knows how to make a sophisticated impression.

Inside, the dining and reception room establishes a warm, inviting tone. Two arched sash windows brighten the space, while oak herringbone floors lend a cohesive feel. An olive velvet Andrew Martin sofa introduces a warm burst of colour; entertainment comes courtesy of paperback-filled shelves and a widescreen TV. Dark column radiators, a vintage gold mirror and a Marcel Breuer-style dining set layer in subtle personality.







An archway frames the transition into the generous eat-in kitchen. Here, olive green shaker cabinetry pairs with Calacatta Gold quartz worktops and a breakfast bar positioned for easy everyday use. The window frames leafy glimpses of Tregunter Road – a reminder of the home's Chelsea setting.



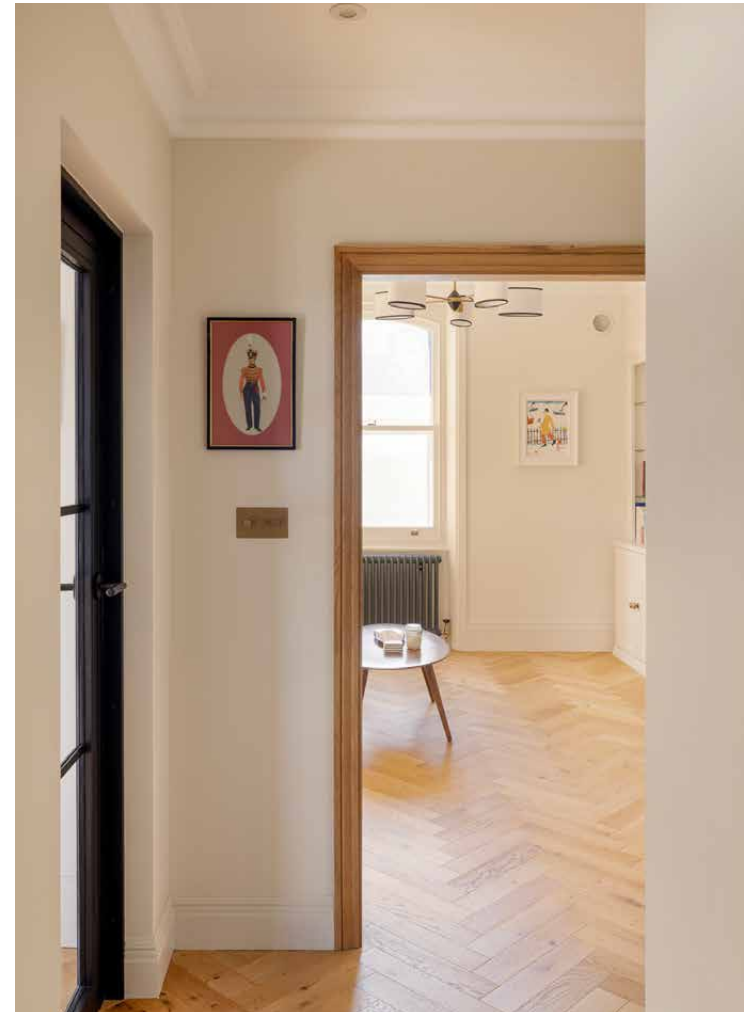












“ Cream carpet  
underfoot, a muted-  
orange Andrew  
Martin headboard  
and bespoke-lined  
curtains create a calm,  
consistent palette.



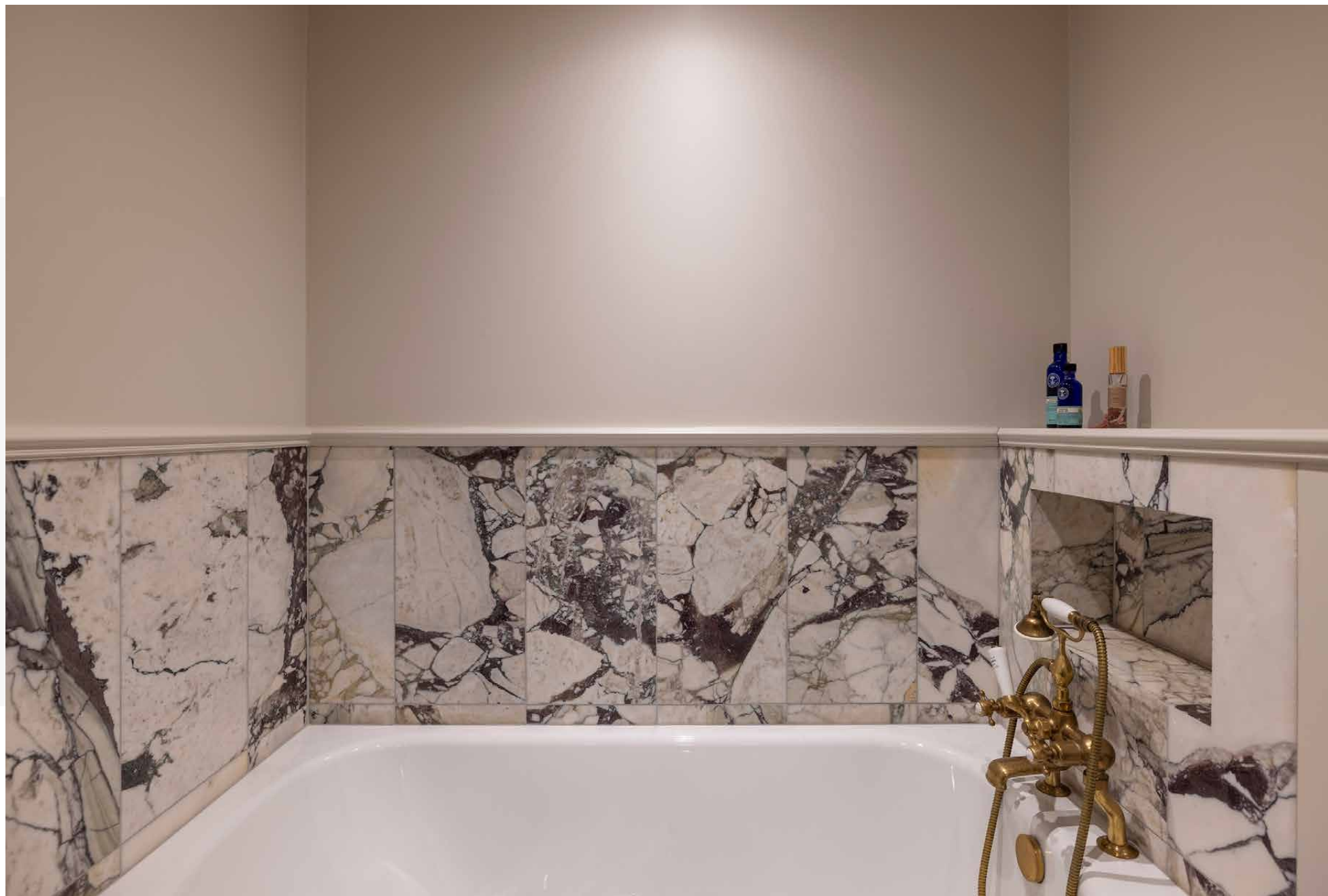


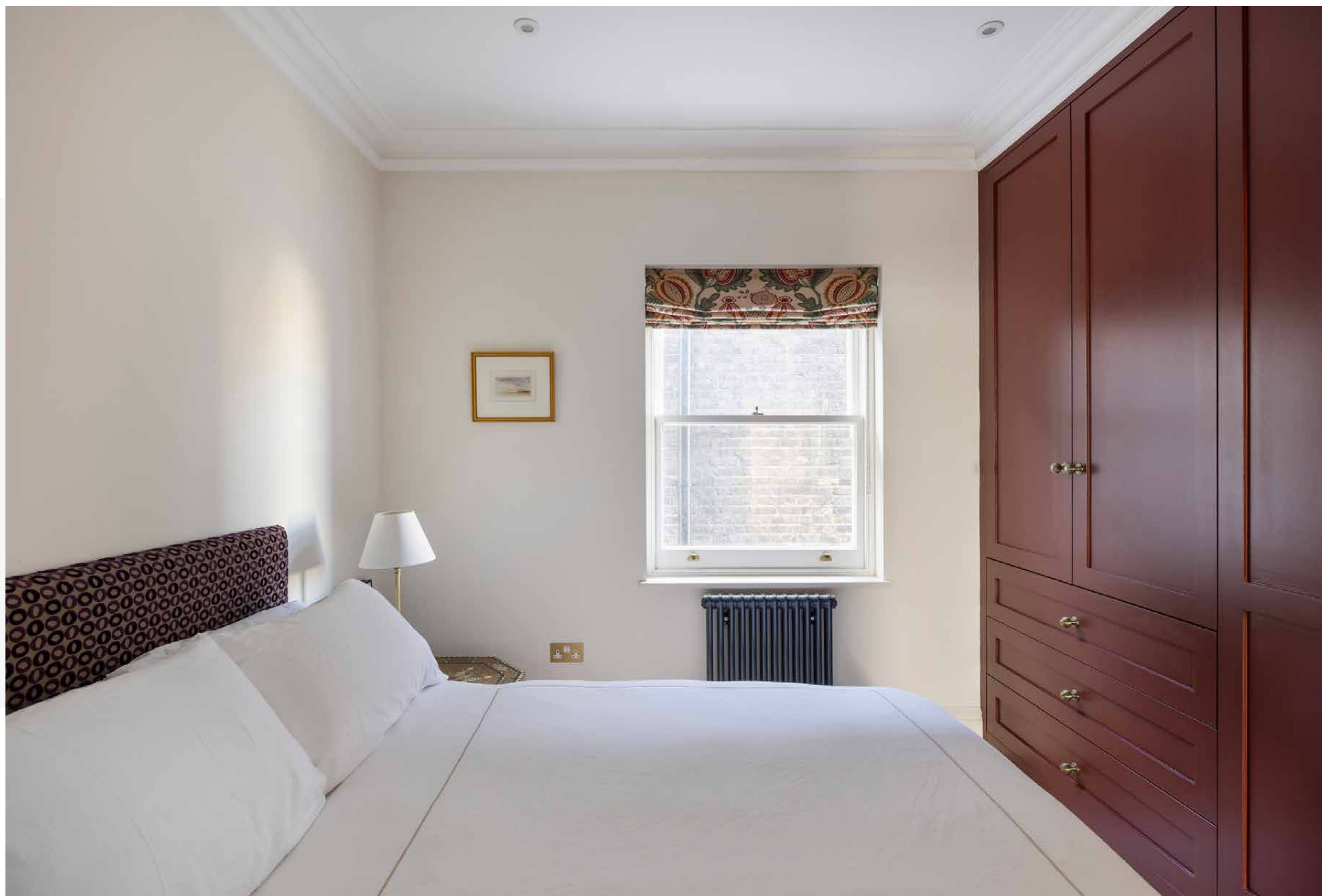




Elsewhere, the principal bedroom leans into softness. Cream carpet underfoot, a muted-orange Andrew Martin headboard and bespoke-lined curtains create a calm, consistent palette. Texture elevates the setting, from the custom wardrobes with rattan fronts to the Pierre Jeanneret-inspired chair. The family bathroom is a highlight, where Violetta marble tiles wrap around a deep Bette Ocean bathtub. The guest bedroom continues in a more minimal register – crisp white walls contrasted with deep berry fitted wardrobes. Its en suite pairs grey limewash with a solid concrete basin and a streamlined shower for a contemporary finish.



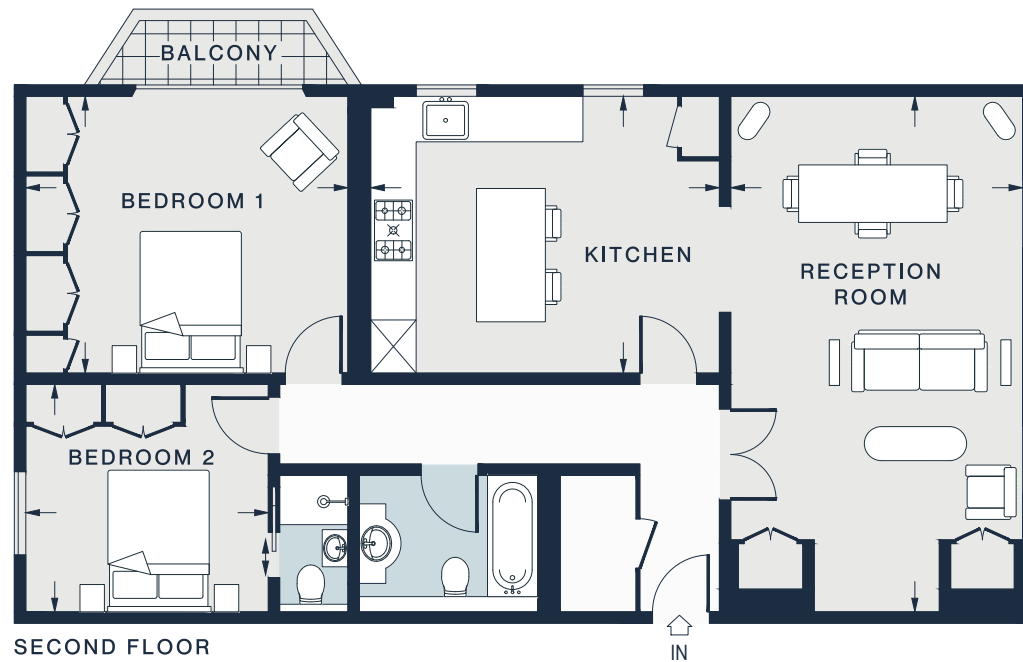












RECEPTION ROOM  
22'0 x 12'8 (6.7m x 3.8m)

KITCHEN  
15'1 x 12'2 (4.6m x 3.7m)

BEDROOM 1  
13'11 x 11'11 (4.2m x 3.6m)

BEDROOM 2  
10'6 x 10'0 (3.2m x 3.0m)

Approx. Gross Internal Area = 964 sq ft / 89.6 sq m

Floor plans are for illustrative purposes only and not to scale. Compliant with RICS code of measuring practice.  
Prepared for Domus Nova. Copyright © All Rights Reserved.

## Property Details

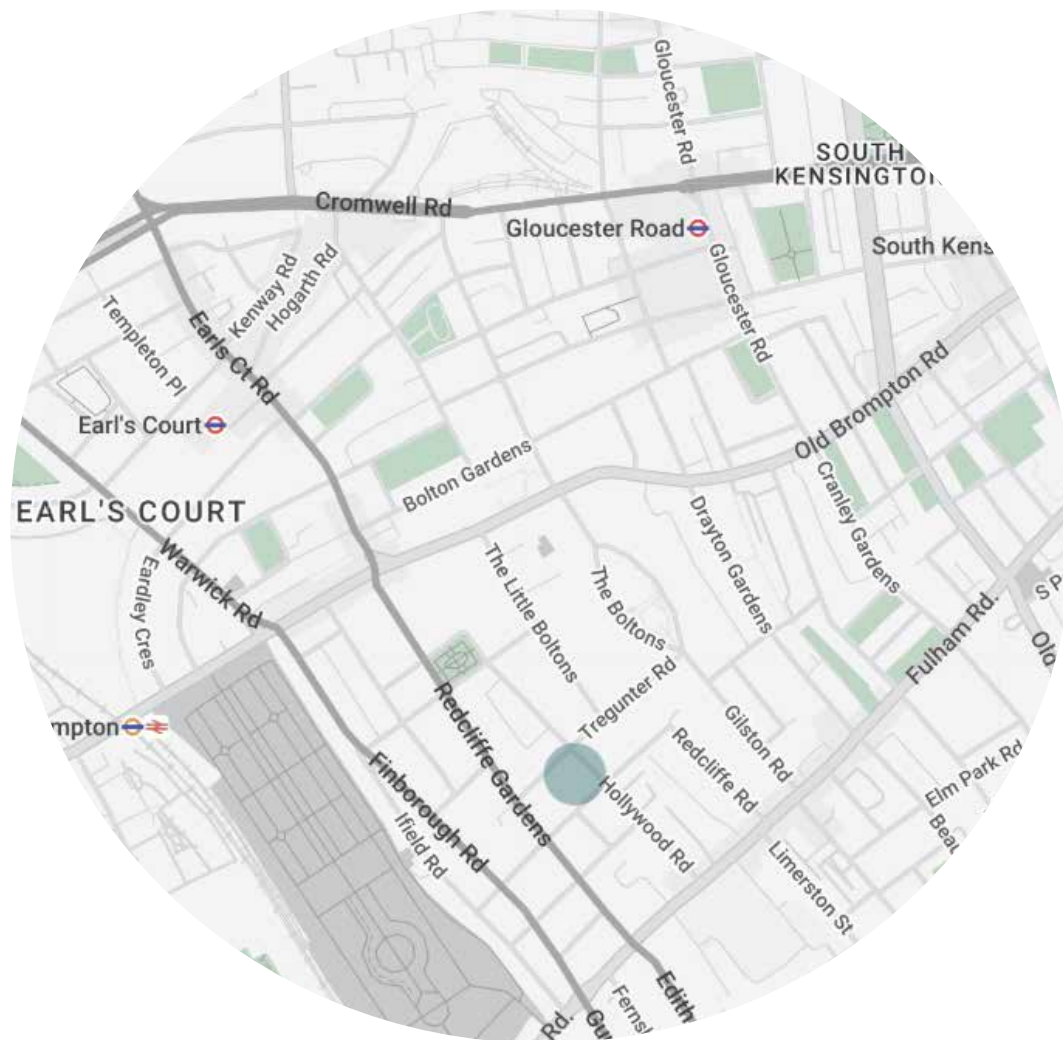
2 Bedrooms, 2 Bathrooms  
Interiors by Charlie Ilett Designs  
Open-plan dining and reception room  
Spacious eat-in kitchen  
Principal bedroom with built-in storage  
Guest bedroom suite  
Family bathroom  
Balcony  
Royal Borough of Kensington & Chelsea

Approx. 964 sq ft / 89.6 sq m

EPC=C

Deposit: £8,800 (SL)

Council Tax Band: G



## Location

Characterised by leafy streets with rows of period homes, Chelsea is a peaceful residential area with a central London postcode. On your doorstep, Brompton Cemetery is one of the capital's seven historic burial grounds, with tree-lined avenues and heritage architecture to explore. Venture to the King's Road for retail therapy, before a stroll along the Embankment. South Kensington's plethora of museums are nearby for world-class exhibitions. Spend an evening at Evans & Peel, one of London's only speakeasy bars, or catch live music at the Troubadour.

Earl's Court - 12 mins (Circle, District, Piccadilly)



# Who — we are



Forward-thinkers in property, design and culture, we're an estate agency that hits refresh.

Domus Nova was born out of a desire to do things differently; to break the traditional agency model and focus on design-led homes in London and Ibiza, all while delivering the highest levels of personal service.

Our story starts in the nineties when we founded Notting Hill's first boutique agency – and we continue to open the doors to the most remarkable spaces, revealing them to our like-minded community.

We want to help you live better – and believe considered design can do that. That's why we remain committed to building on our legacy, in collaboration with BARNES International, an established agency with a market-leading presence in 22 countries.

Uniting our local insight and curated portfolio with BARNES International's expansive reach, we can facilitate the best opportunities in not only London and Ibiza, but also across Europe, the US and further afield – whether that's a château in the South of France, a penthouse in New York, or a chalet in the Swiss Alps.



# DOMUS NOVA

Specialising in London  
and Ibiza's design-led homes

Let's talk  
020 7727 1717  
[lettings@domusnova.com](mailto:lettings@domusnova.com)

---

The property particulars are a guide not statements. Descriptions, photographs, and plans are for guidance and should be checked by the prospective tenant. The Property is offered "subject to contract and references". No warranties, representations, or Tenancy is given by Domus Nova. Expenses incurred by a prospective tenant will not be reimbursed if the Landlord withdraws prior to the Tenancy Agreement being signed, dated and exchanged and cleared funds received. Furniture and other items shown in a property at viewing may belong to a current tenant. The prospective tenant should verify in writing which fixtures and fittings forms part of the Tenancy. Our full lettings disclaimer together with trading names and our [Privacy Policy](#) is shown on our website

© 2025 Domus Nova in partnership with BARNES International. All rights reserved.

*In partnership with*  
**BARNES**  
INTERNATIONAL REALTY