

DOMUS NOVA

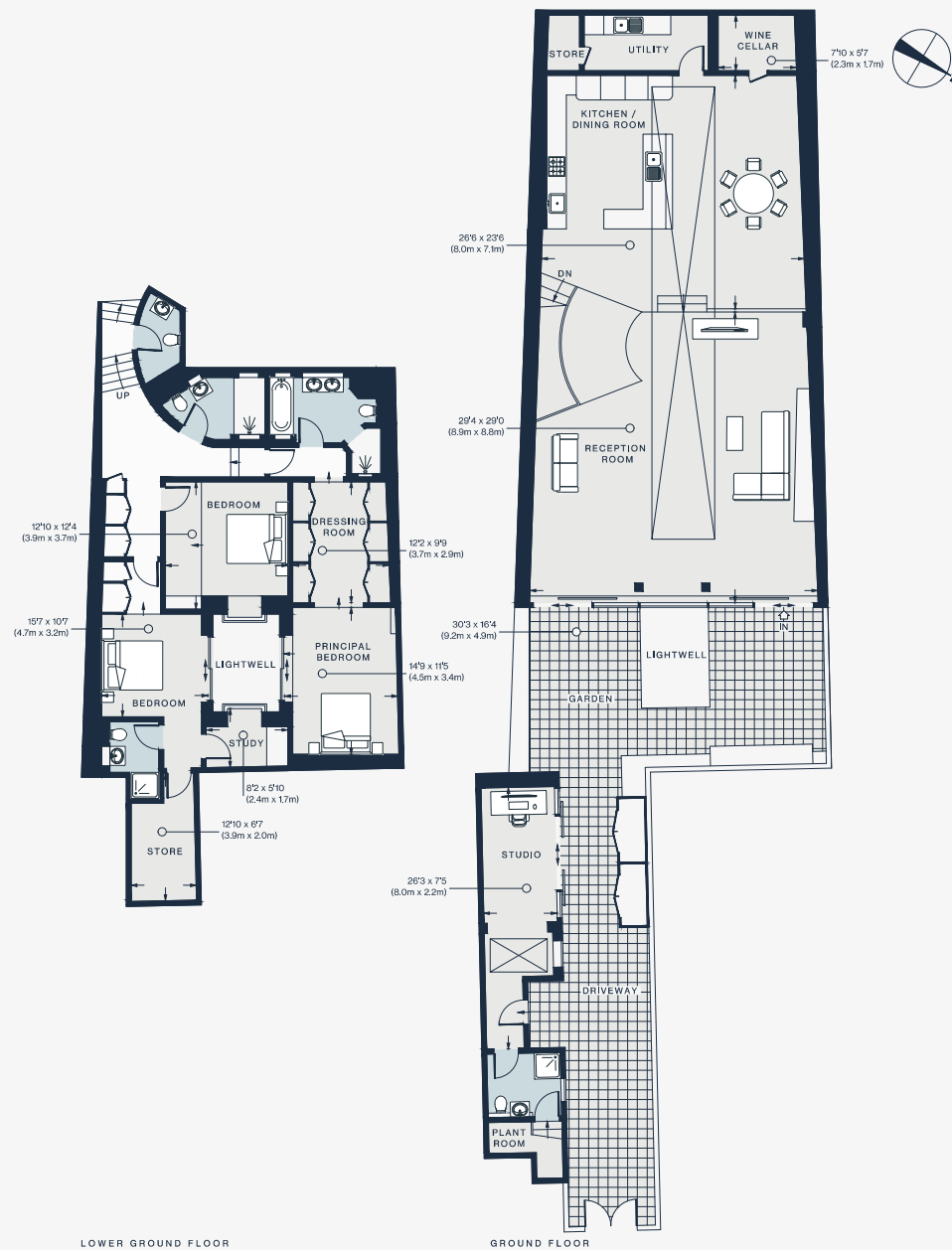
Tilton Street
Notting Hill W11

APPROXIMATE GROSS INTERNAL AREA

3,009 sq ft / 280 sq m

020 7221 7817
domusnova.com

LONDON | IBIZA



Floor plans are for illustrative purposes only and not to scale. Compliant with RICS code of measuring practice.