

# DOMUS NOVA



Thornton Avenue W4  
£4,500 pw - Short Let



A striking five-bedroom Victorian villa for rent in Chiswick. This eclectic heritage home pairs original features with considered modern interventions.

Lined with mature trees, a residential street off Chiswick High Road plays host to a design-forward home. The front elevation features exposed brick and ornate barge boards around a gable end window. A chequered pathway makes for a suitable welcome to this period home, its entrance framed by white masonry and climbing rose bushes.

A chandelier crowns the entranceway as mosaic floor tiles guide the way to a spacious open-plan kitchen and reception room. A trio of skylights floods the space with rejuvenating natural light, diffused across whitewashed walls and cabinetry. Arranged around an island, a modern kitchen combines stone worktops and integrated appliances to create clean lines and a sense of order.







Past a comfortable dining area, steps lead up to a separate double reception room. Tones of mint and dark denim characterise the space which features bespoke joinery and a fireplace with an intricately carved surround. This room can easily be delineated into two separate living spaces or opened up into one large reception room.

From the kitchen, hardwood flooring flows into an additional living area to the rear. Floor-to-ceiling glazing is generous with natural light and folds away to invite the outside in. Outside, a west-facing patio is large enough for dining or entertaining while the lawn beyond is enveloped by flowering shrubs and bushes, making for a leafy refuge.













Taking the first floor, the principal bedroom suite combines cooling tones with original features. An ornate fireplace grounds the room while white wooden window shutters open to pour light into the space via a bay window.

A large dressing area could be used as a study space while the en suite bathroom pairs a bathtub with a floating dual vanity. Spread across the top floor, four further bedrooms enjoy eclectic décor and natural light.







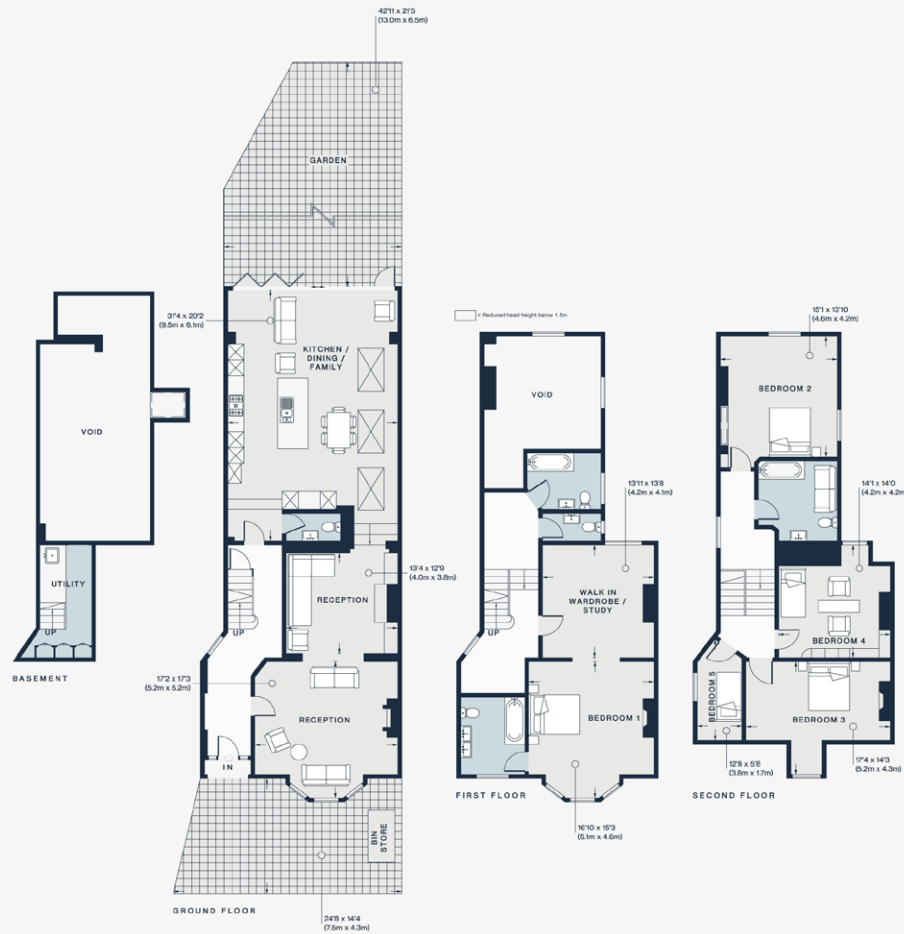






Mon - Sat  
9 am - 9 pm  
Sunday  
9 - 9 pm  
EC Permit holders  
or  
Pay by phone  
0203 357 4993  
quoting location  
807811  
Max stay 4 hours





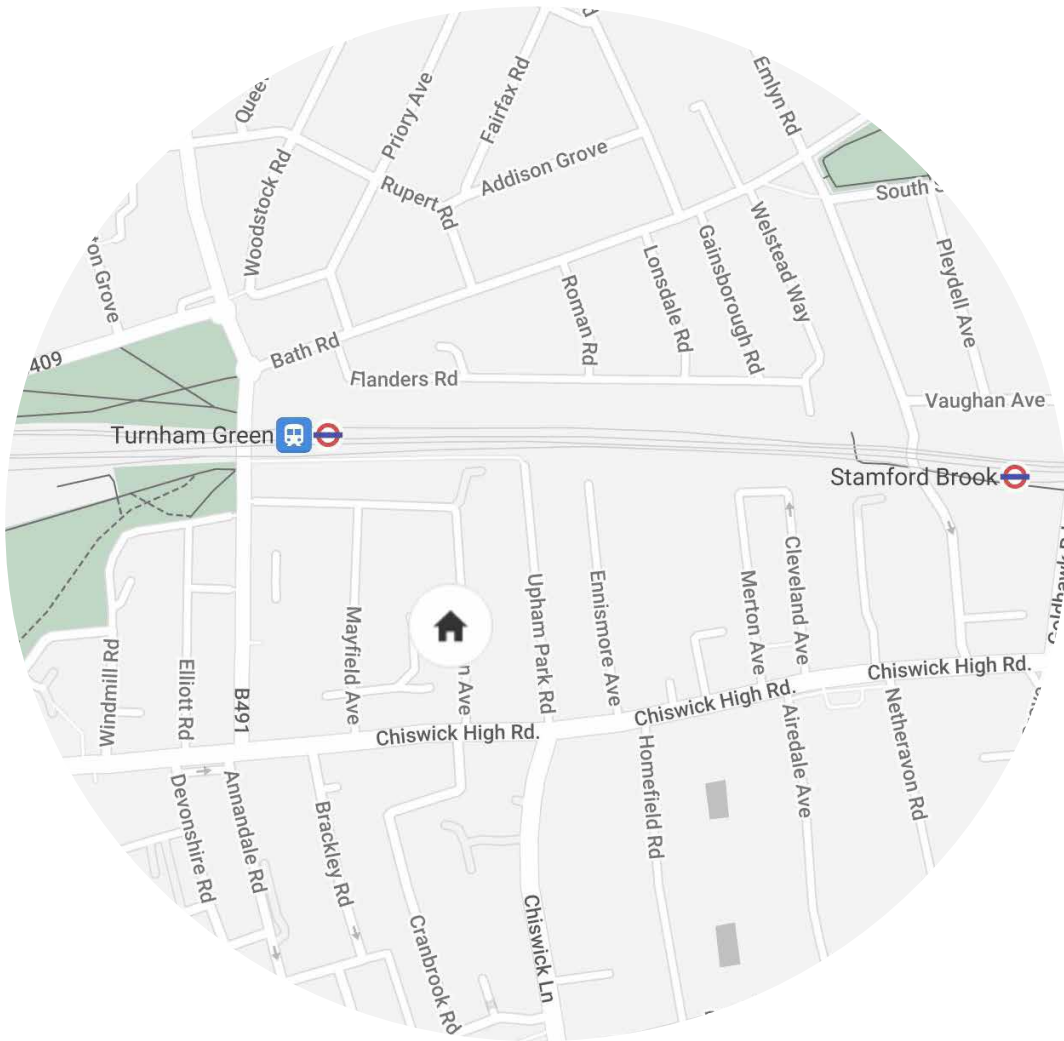
Approx. Gross Internal Area = 3,084 sq ft / 286.5 sq m (Excluding Voids)

Floor plans are for illustrative purposes only and not to scale. Compliant with RICS code of measuring practice. Furniture layouts are indicative only. This property may be furnished, part-furnished or unfurnished. Please refer to your agent for details.

## Property Details

- Open-plan kitchen and reception room
- Additional double reception room
- Principal bedroom suite with walk-in wardrobe
- Four further bedrooms
- Two family bathrooms
- Garden
- Utility room
- London Borough of Hounslow

- Approx 3,728 sq ft / 346.3 sq
- EPC - E
- Council Tax Band - H
- Deposit Payable - £18,000



## Location

Thornton Avenue is a residential road moments from the main throughfare of one of London's most sought-after enclaves. Often referred to as Chiswick Village, this community-focussed neighbourhood has a range of boutiques and a wide array of eateries. For breakfast supplies, head to Chiswick High Road and choose between Gail's and Ole & Steen. Plump for Côte Brasserie for brunch or, come the evening, enjoy handmade pasta at renowned restaurant Villa di Geggiano. Amble home in four minutes.

Turnham Green - 5 mins

Specialising in London  
and Ibiza's design-led homes

Let's talk  
020 7727 1717  
lettings@domusnova.com  
domusnova.com

The property particulars are a guide not statements. Descriptions, photographs, and plans are for guidance and should be checked by the prospective tenant. The Property is offered "subject to contract and references". No warranties, representations, or Tenancy is given by Domus Nova. Expenses incurred by a prospective tenant will not be reimbursed if the Landlord withdraws prior to the Tenancy Agreement being signed, dated and exchanged and cleared funds received. Furniture and other items shown in a property at viewing may belong to a current tenant. The prospective tenant should verify in writing which fixtures and fittings forms part of the Tenancy. Our full lettings disclaimer together with trading names and our [Privacy Policy](#) is shown on our website