

DOMUS NOVA



The Grove, Highgate – £15,000 p/w (SL)

In partnership with **BARNES**
INTERNATIONAL REALTY

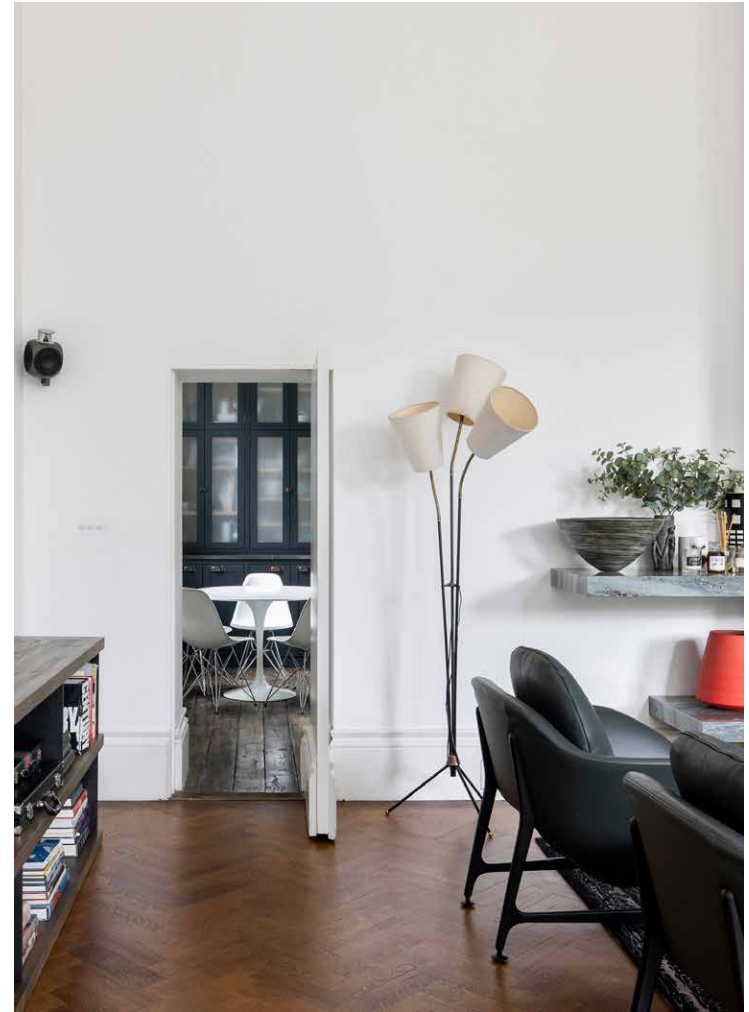


An interplay of period elegance and contemporary design unfold at this Grade II listed five-bedroom house in Highgate.

Set back on a leafy Highgate street, two stone columns mark the entrance to The Grove. Beyond a traditional frontage, contemporary design and palatial proportions characterise every room.

A sleek black door sets the tone, opening to a hallway enveloped in deep hues. Dark grey walls offer a cool contrast to warm wood flooring. Drawing attention to the dramatic staircase, a striking chandelier spans the three-storey atrium.



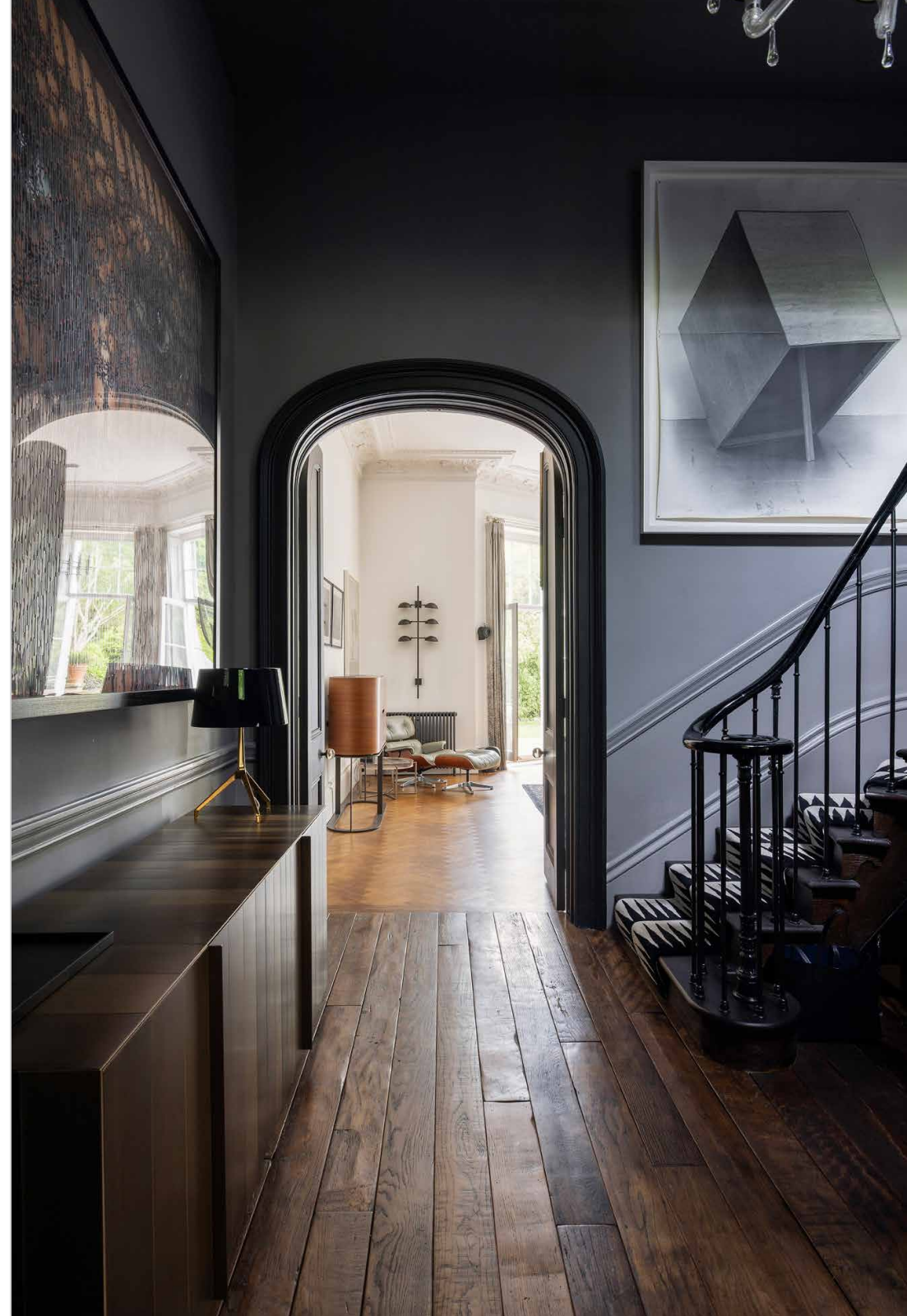


Through an arched doorway, herringbone flooring sweeps across an open-plan reception and dining room. An alluring juxtaposition of period and modern features plays out – intricate cornicing contrasting a commanding grey marble fireplace. Inviting textures – a teal velvet sofa and soft navy carpet – construct a space that invites relaxation. Illuminated by a Gaetano Sciolari-inspired chandelier, a grand oval dining table accommodates 12.

Flooding the space with natural light, three sets of French doors open to a patio with sandstone tiles. Beyond, mature trees and nurtured florals lend privacy to a sprawling green space.

Soaring ceiling heights continue through to the kitchen, where textural details ground the room. Wood and marble countertops sit atop Prussian blue cabinetry.

Extending up the walls, a marble backsplash adds dimension to pristine white walls. Illuminated by a triple-pane sash window, an art installation of silver spoons appears to descend from the ceiling. An Aga oven and circular dining table combine form with function.











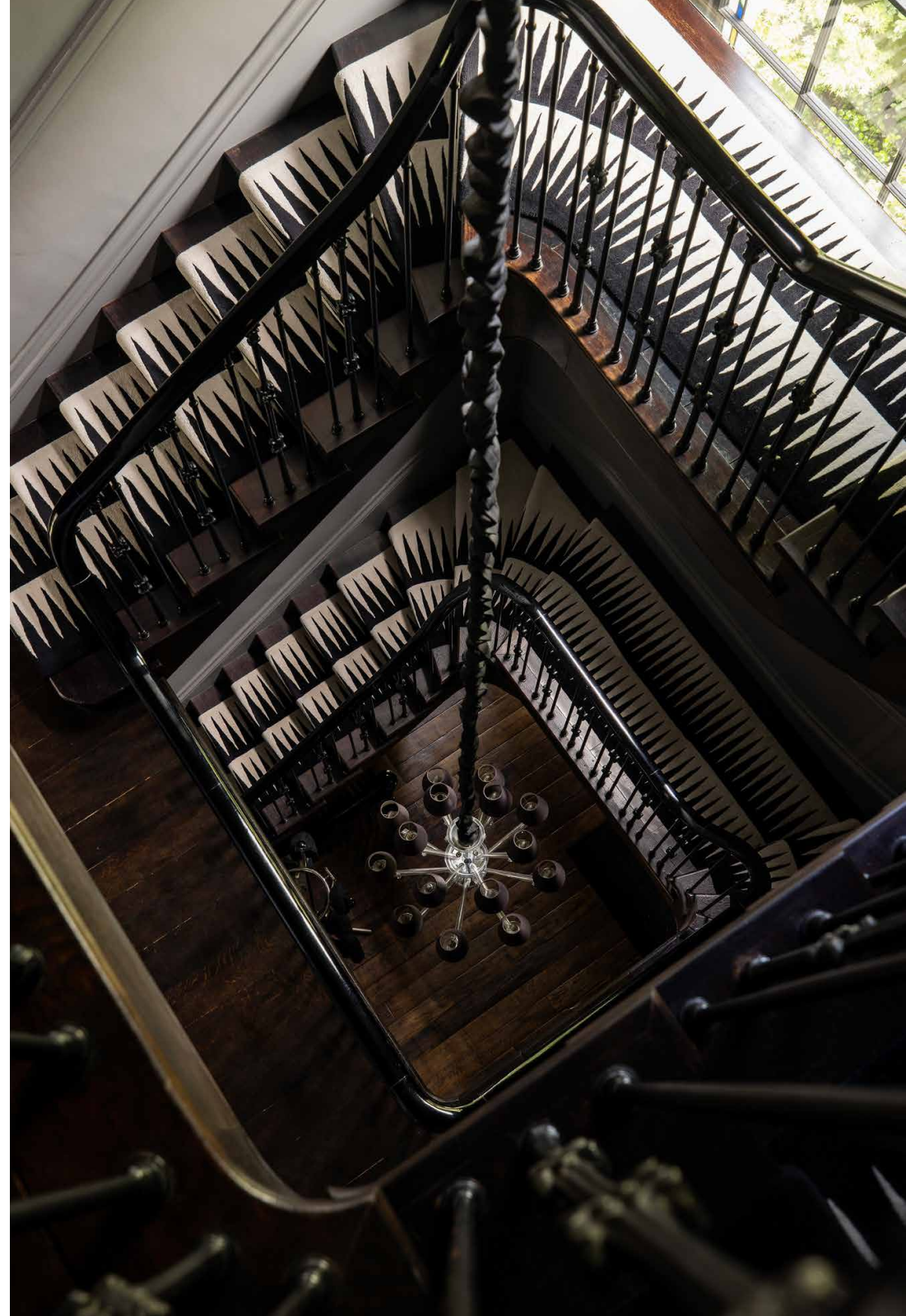


Spread across the first floor, sleek styling injects a dose of modernism in the principal bedroom suite. Against grey walls, a cream hexagonal headboard highlights an expansive bed framed by pendant lights. Two plush armchairs are serene spots to take in the views of the garden.

To the rear of the room, discreet doors lead to an expansive dressing room and study. In the en suite bathroom, mirrors above the dual vanity and opposite the window effortlessly reflect light across marble tiling. A large freestanding bathtub and walk-in shower complete the space.

Four further bedrooms positioned over the second floor embody the home's lofty proportions, each with integrated storage space. One benefits from an en suite, the others served by a family bathroom. At the top of the home, an open-plan area radiates versatility and can act as a fifth bedroom. Bright white walls and floorboards enhance the sense of space, while a deep blue border adds depth.

A staircase on the ground floor descends to a luxuriously fitted cinema room, wine cellar, and a flexible space ideal as a gym.



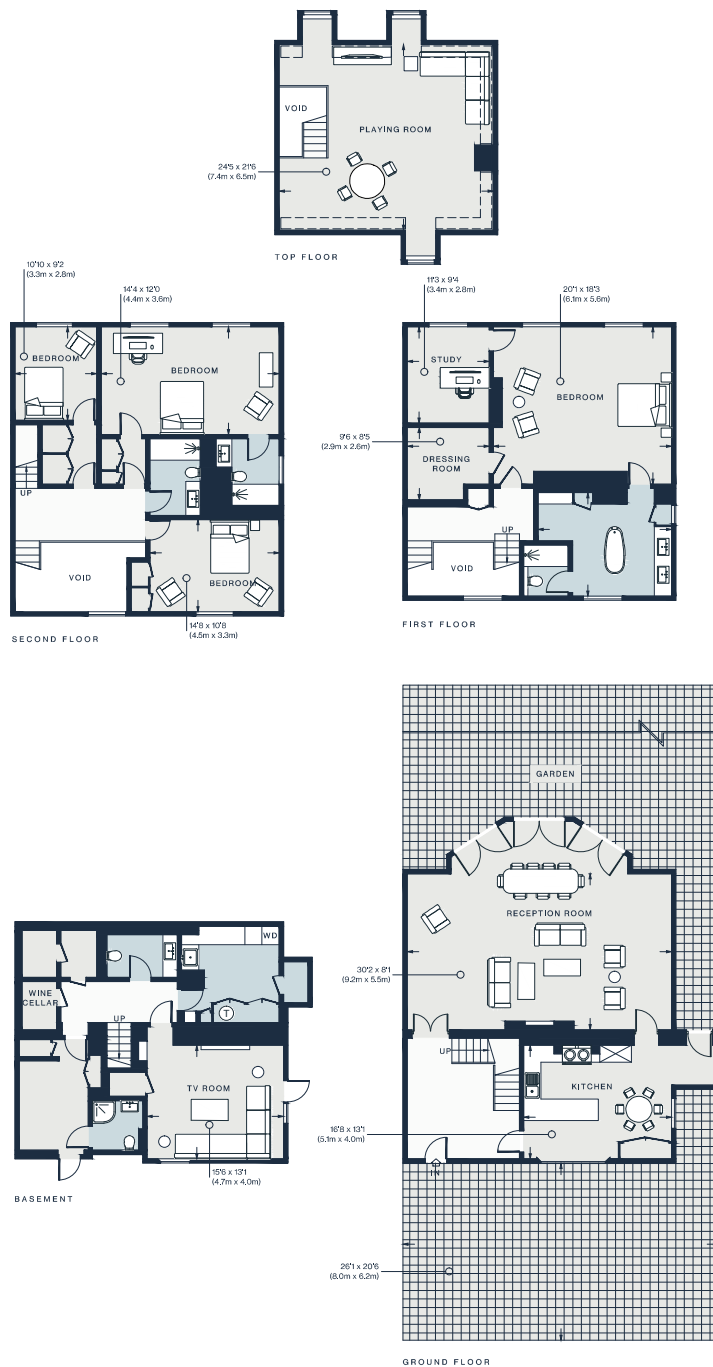












Approx. Gross Internal Area = 3,420 sq ft / 317.8 sq m
(Excluding Voids)
Basement = 790 sq ft / 73.4 sq m
Total = 4,210 sq ft / 391.2 sq m

Floor plans are for illustrative purposes only and not to scale. Compliant with RICS code of measuring practice.
Furniture layouts are indicative only. This property may be furnished, part-furnished or unfurnished. Please refer to your agent for details.

Property Details

Open-plan reception and dining room
Contemporary kitchen
Principal bedroom suite with dual dressing rooms
Guest bedroom suite
Three further bedrooms
Family bathroom
Cinema room
Gym
Wine cellar
Private garden
London Borough of Camden

Approx 4,210 sq ft / 391.2 sq m
EPC - D
Council Tax Band - H
Deposit Payable - £60,000



Location

Located on a picturesque lane in Highgate, feel worlds away from the bustle of London while retaining easy access to the action. Just a short walk away, Highgate High Street offers a village-like ambience with its colourful cafes and age-old pubs. Pick up pastries and coffee from Gail's Bakery, then head down to Waterlow Park for a leisurely stroll around its garden oasis. Alternatively, pick up the pace at the tennis courts. Heading home, stop by local favourite The Flask for seasonal chef specials and a drink en route.

Highgate - 12 mins (Northern)

Who — we are



Forward-thinkers in property, design and culture, we're an estate agency that hits refresh.

Domus Nova was born out of a desire to do things differently; to break the traditional agency model and focus on design-led homes in London and Ibiza, all while delivering the highest levels of personal service.

Our story starts in the nineties when we founded Notting Hill's first boutique agency – and we continue to open the doors to the most remarkable spaces, revealing them to our like-minded community.

We want to help you live better – and believe considered design can do that. That's why we remain committed to building on our legacy, in collaboration with BARNES International, an established agency with a market-leading presence in 22 countries.

Uniting our local insight and curated portfolio with BARNES International's expansive reach, we can facilitate the best opportunities in not only London and Ibiza, but also across Europe, the US and further afield – whether that's a château in the South of France, a penthouse in New York, or a chalet in the Swiss Alps.



DOMUS NOVA

Specialising in London
and Ibiza's design-led homes

Let's talk
020 7727 1717
lettings@domusnova.com

The property particulars are a guide not statements. Descriptions, photographs, and plans are for guidance and should be checked by the prospective tenant. The Property is offered "subject to contract and references". No warranties, representations, or Tenancy is given by Domus Nova. Expenses incurred by a prospective tenant will not be reimbursed if the Landlord withdraws prior to the Tenancy Agreement being signed, dated and exchanged and cleared funds received. Furniture and other items shown in a property at viewing may belong to a current tenant. The prospective tenant should verify in writing which fixtures and fittings forms part of the Tenancy. Our full lettings disclaimer together with trading names and our [Privacy Policy](#) is shown on our website

© 2025 Domus Nova in partnership with BARNES International. All rights reserved.

In partnership with
BARNES
INTERNATIONAL REALTY