

DOMUS NOVA

The Georgian House

Kensal Rise NW10

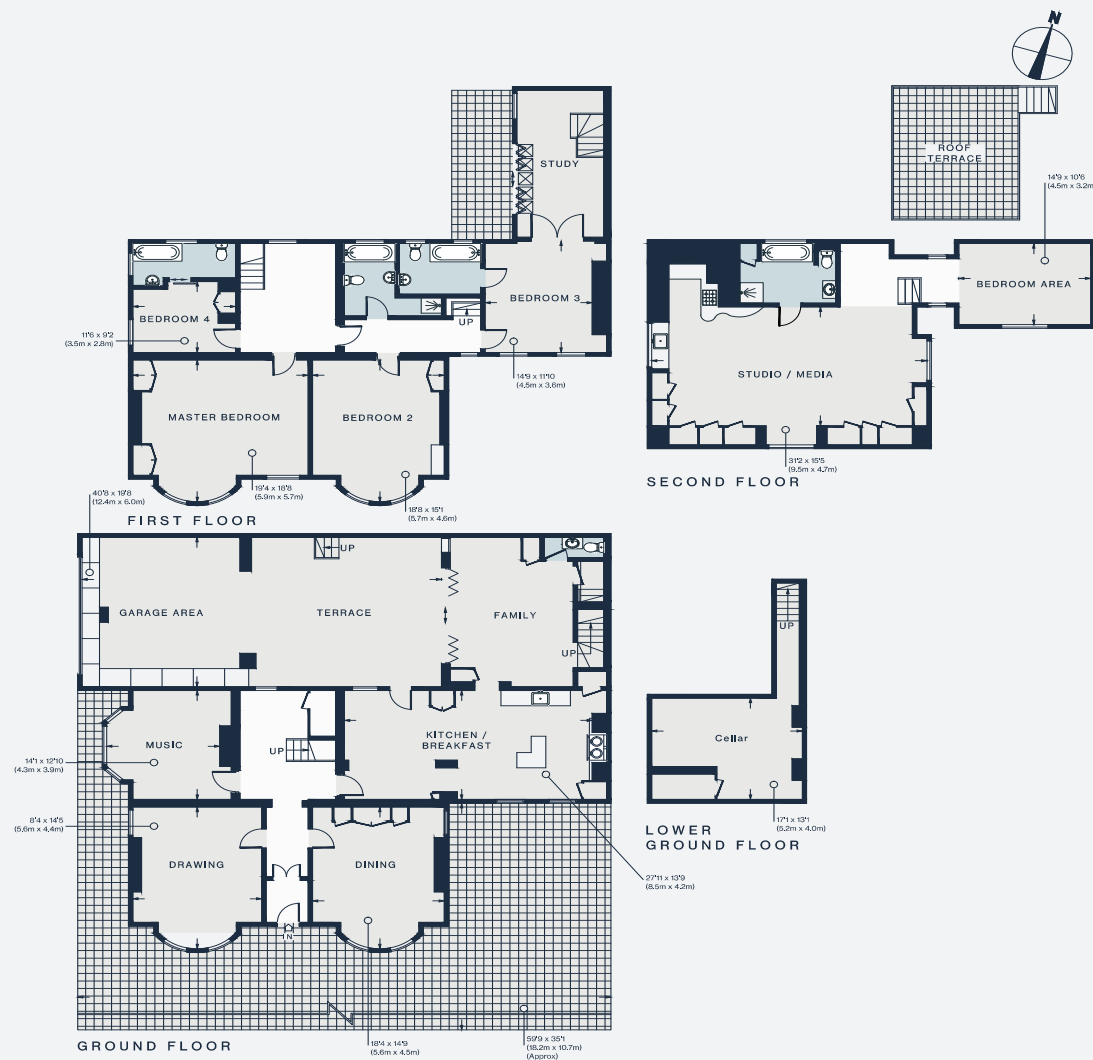
APPROXIMATE GROSS INTERNAL AREA

5,365 sq ft / 498.4 sq m

020 7727 1717

domusnova.com

LONDON | IBIZA



Floor plans are for illustrative purposes only and not to scale. Compliant with RICS code of measuring practice. Furniture layouts are indicative only. This property may be furnished, part-furnished or unfurnished. Please refer to your agent for details.