

DOMUS NOVA



The Avenue W4
£799,950

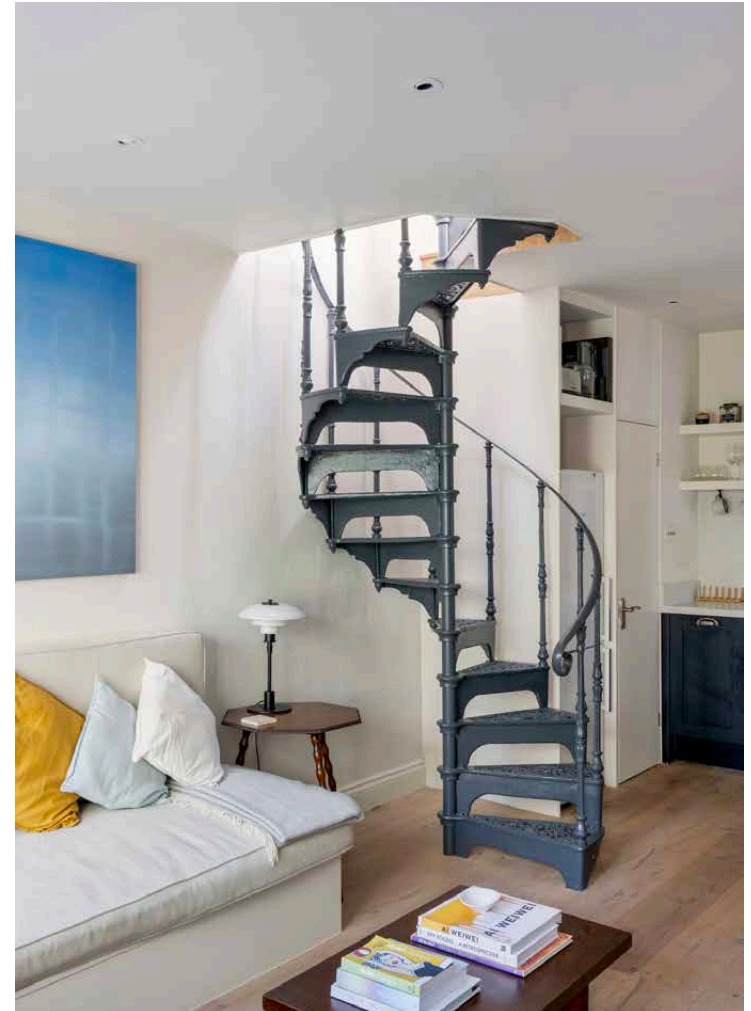


Set beyond imposing metal gates, a serene escape from city life awaits. Hidden to the rear of a courtyard garden, this one-bedroom home brings together contemporary character and a cottage-style framework.

Mature shrubs surround a stepping-stone path to the conservatory entrance, a considered addition that exudes a sense of authenticity. Soft sage doors and windows blend with the leafy surrounds, while exposed brick walls enrich the connection between inside and out. An atmospheric space to dine or entertain, draw open the doors in warmer months, or light the log burner when the cold sets in.

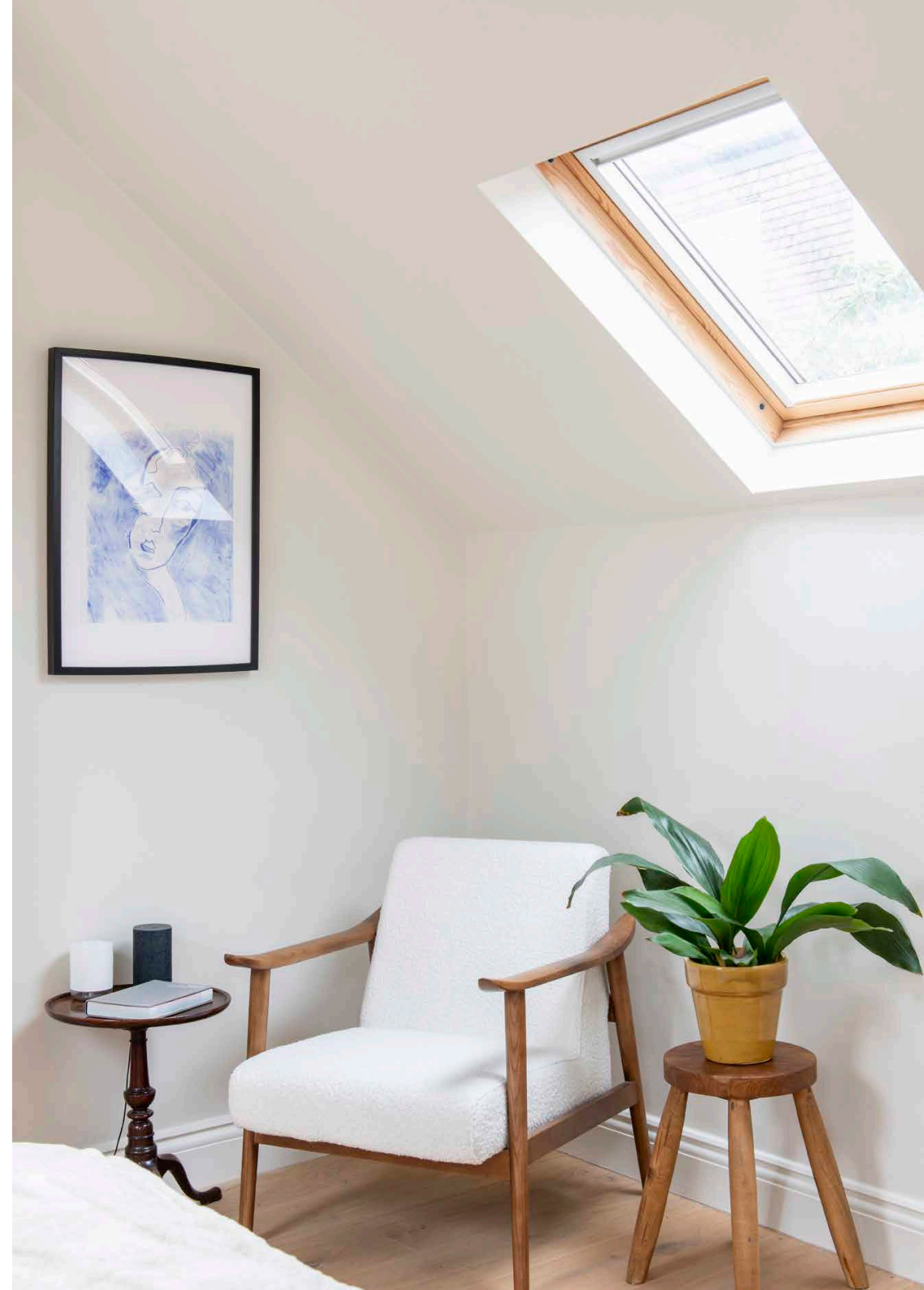
Bespoke joinery leads the way inside, where wooden floors sweep through a considered open-plan kitchen and reception room. Inky cabinetry pops against white walls and worktops in the kitchen, complete with open shelving, integrated appliances and a cosy breakfast bar. A convenient cloakroom is also found on this floor.







An ornate spiral staircase guides upstairs, ascending to a restful bedroom suite found in the eaves. Velux windows bathe the space in natural light, accentuating a calming palette of pared-back tones. A separate dressing area maximises the available footprint, while an en suite features a rainfall shower over a bathtub, plus a wooden cabinet under the basin for extra storage.

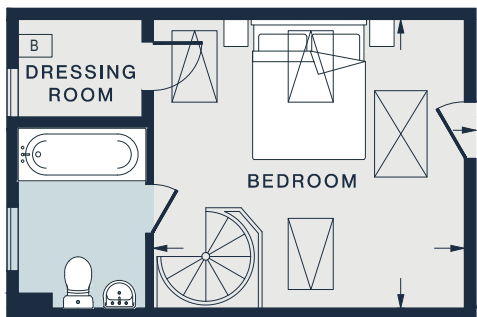




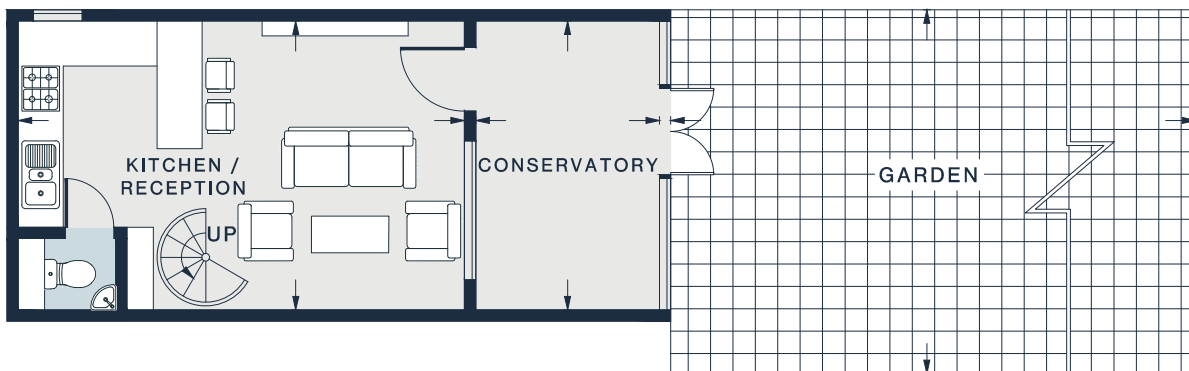


“

Soft sage doors and windows blend with the leafy surrounds, while exposed brick walls enrich the connection between inside and out.



FIRST FLOOR



GROUND FLOOR

RECEPTION / KITCHEN

19'5 x 12'7 (5.9m x 3.8m)



CONSERVATORY

12'8 x 8'1 (3.9m x 2.5m)



BEDROOM

13'7 x 12'7 (4.1m x 3.8m)



GARDEN

52'0 x 16'0 (15.8m x 4.9m)



Property Details

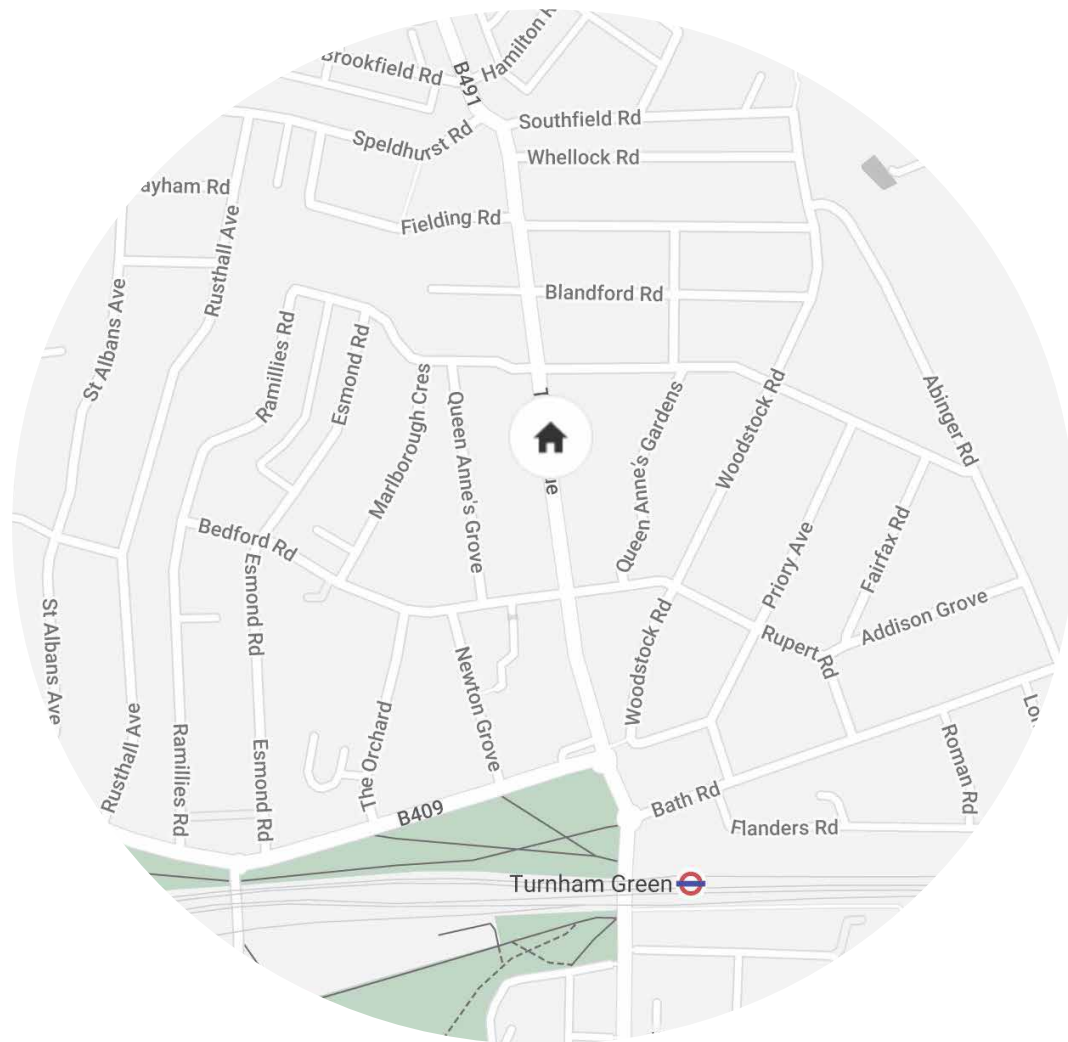
- Open-plan reception room and kitchen
- Contemporary conservatory
- Principal bedroom suite with dressing area
- Additional cloakroom
- Private garden
- London Borough of Ealing

Approx. 611 sq ft / 56.8 sq m

EPC = D

Tenure: Freehold

Council Tax Band: E



Location

Sitting between the neighbourhood-focused enclaves of Turnham Green and Chiswick, The Avenue enjoys a best-of-both-worlds feel. The leafy expanses of Acton Green Common and Chiswick Common – with its tennis and netball courts – are on the doorstep, together with the restaurants and independent shops of Turnham Green Terrace and Chiswick High Road. Grab a flat white at Chief Coffee, or a glass of wine at deli-cum-bar Hack & Veldt. Come evening, pull up a stool for sashimi at the popular Sushi Bar Makoto or enjoy the French fine dining at La Trompette.

Turnham Green (9 mins)

Specialising in London
and Ibiza's design-led homes

Let's talk
020 7221 7817
sales@domusnova.com
domusnova.com

The particulars above are a guide, not an offer or contract. Descriptions, photographs and plans are not statements or representations of fact. Measurements are approximate and not to scale. Prospective purchasers must verify the accuracy of the information within the particulars. Domus Nova does not give any representations or warranties; nor represent the Seller legally. Domus Nova has no liability, for any costs, losses or expenses incurred by the Seller or a prospective buyer relating to the sales and buying transaction.

Our Sales Disclaimer, trading names and privacy policy on how your data is processed and used is found in full on our website in our [Privacy Statement](#).

© Domus Nova 2024. All rights reserved.