

DOMUS NOVA



Television Centre, W12
£1,100,000





The iconic Television Centre, once home to the BBC studios, is a cultural and architectural gem in West London's crown. First built in the 1960s, the buildings are now a series of residential, working and leisure spaces tailored to a discerning audience. Echoing the sleek design of its exterior, this two-bedroom lateral apartment has been crafted with a refined aesthetic eye: clean lines, streamlined technology and plenty of natural light.

Located on the sixth floor, the home opens into an open-plan kitchen, dining and reception room. Whitewashed walls and pale engineered oak floors set a neutral backdrop, while a wall of glazing draws in reams of sunlight. Configured as an L-shape, the kitchen is all handleless cabinets, integrated Siemens appliances and an eye-catching marble worktop and splashback. There's connectivity drawn between the indoors and out, thanks to the sliding glass door that opens to a balcony – ideal for al fresco moments in the warmer months. Plus, there's air-conditioning and underfloor heating for year-round comfort.











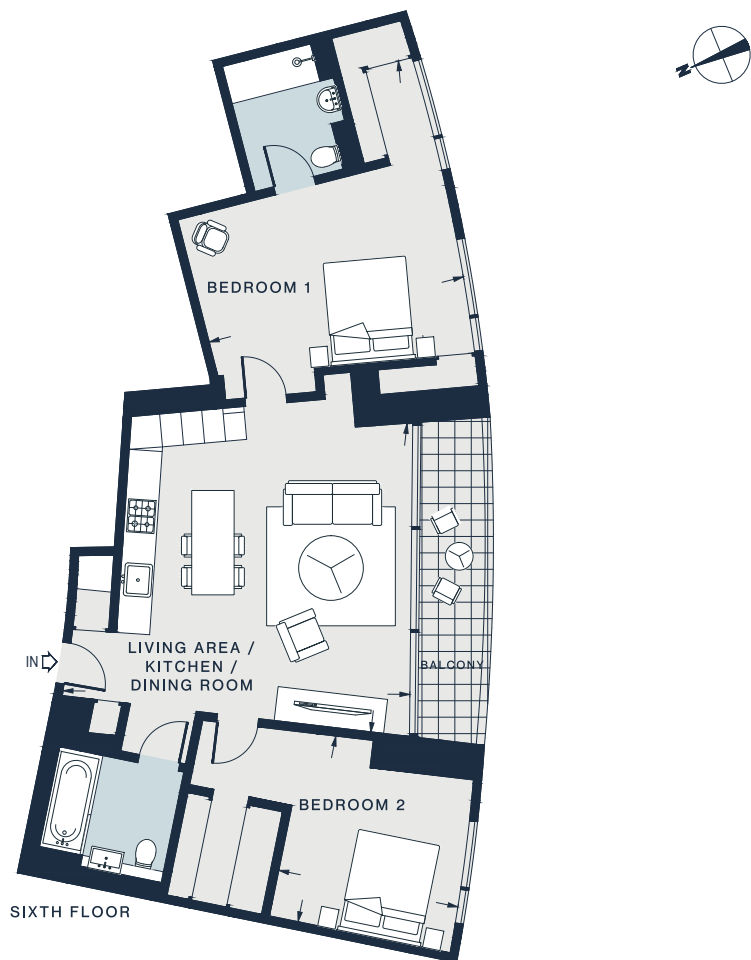


The principal bedroom suite is a serene setting, with pale walls, carpeted floors and a pair of large windows illuminating the space. There's a dedicated dressing area complete with open wooden wardrobes, plus an en suite Italian-finished bathroom with an oversized rainfall shower wrapped in geometric tiling. The guest bedroom offers versatility to be used as an office, home gym or studio, served by an additional bathroom featuring a bathtub.









LIVING AREA/ KITCHEN/ DINING ROOM	BEDROOM 1	BEDROOM 2
21'4 x 18'4 (6.5m x 5.6m)	18'1 x 15'5 (5.5m x 4.7m)	11'2 x 11'2 (3.4m x 3.4m)

Approx. Net Saleable Area = 978 sq ft / 90.9 sq m

Floor plans are for illustrative purposes only and not to scale. Compliant with RICS code of measuring practice.
Prepared for Domus Nova. Copyright © All Rights Reserved.

Property Details

Sixth floor lateral apartment
Open-plan kitchen, dining and reception room
Principal bedroom suite
Guest bedroom
Guest bathroom
Private balcony
London Borough of Hammersmith & Fulham

Approx. 978 sq ft / 90.9 sq m
EPC=B
Tenure: Leasehold
Length of Lease: Approx. 993 years
Council Tax Band: F
Service Charge: £10,198



Location

Despite the prime West London convenience, White City retains an enclave-like quietude – its appeal rooted in the balance of connection and discretion. The private White City House gym, rooftop pool and wellness facilities are peerless, or venture down to Ravenscourt Park with its tennis and netball courts. World-class retail is at your doorstep, with Westfield delivering a curated blend of luxury offerings. The peaceful cluster of cafés and delicatessens in Hammersmith's Brackenbury Village is tailor-made for leisurely weekends, before a stroll along the Thames. For local fine dining, you're spoilt for choice with Endo at the Rotunda, Cricket and Chet's.

Wood Lane - 2 mins (Circle, Hammersmith & City)

White City - 3 mins (Central)

Shepherd's Bush - 10 mins (Central, Overground)

Specialising in London
and Ibiza's design-led homes

Let's talk
020 7221 7817
sales@domusnova.com
domusnova.com

The particulars above are a guide, not an offer or contract. Descriptions, photographs and plans are not statements or representations of fact. Measurements are approximate and not to scale. Prospective purchasers must verify the accuracy of the information within the particulars. Domus Nova does not give any representations or warranties; nor represent the Seller legally. Domus Nova has no liability, for any costs, losses or expenses incurred by the Seller or a prospective buyer relating to the sales and buying transaction.

Our Sales Disclaimer, trading names and privacy policy on how your data is processed and used is found in full on our website in our [Privacy Statement](#).

© Domus Nova 2025. All rights reserved.