

DOMUS NOVA

Tavistock Crescent

Notting Hill W11

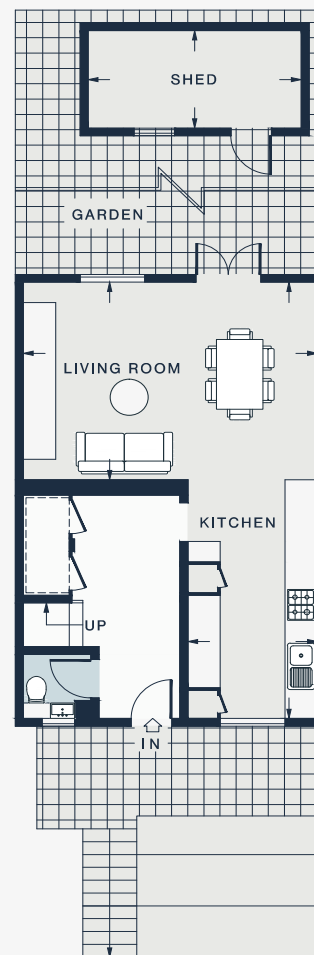
APPROXIMATE GROSS INTERNAL AREA

981 sq ft / 91.2 sq m

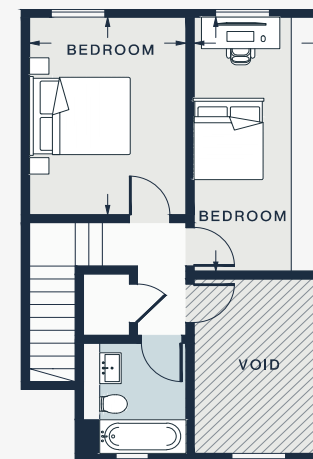
020 7727 1717

domusnova.com

LONDON | IBIZA



GROUND FLOOR



FIRST FLOOR

LIVING ROOM 17'11 x 12'8 (5.7m x 3.9m)	BEDROOM 16'3 x 7'9 (4.9m x 2.4m)	SHED 12'11 x 6'3 (3.9m x 1.9m)
KITCHEN 27'9 x 7'9 (8.5m x 2.4m)	BEDROOM 12'8 x 9'7 (3.9m x 2.9m)	

Approx. Gross Internal Area = 981 sq ft / 91.2 sq m
Shed = 81 sq ft / 7.5 sq m
Total = 1,062 sq ft / 98.7 sq m

Floor plans are for illustrative purposes only and not to scale. Compliant with RICS code of measuring practice. Furniture layouts are indicative only. This property may be furnished, part-furnished or unfurnished. Please refer to your agent for details.