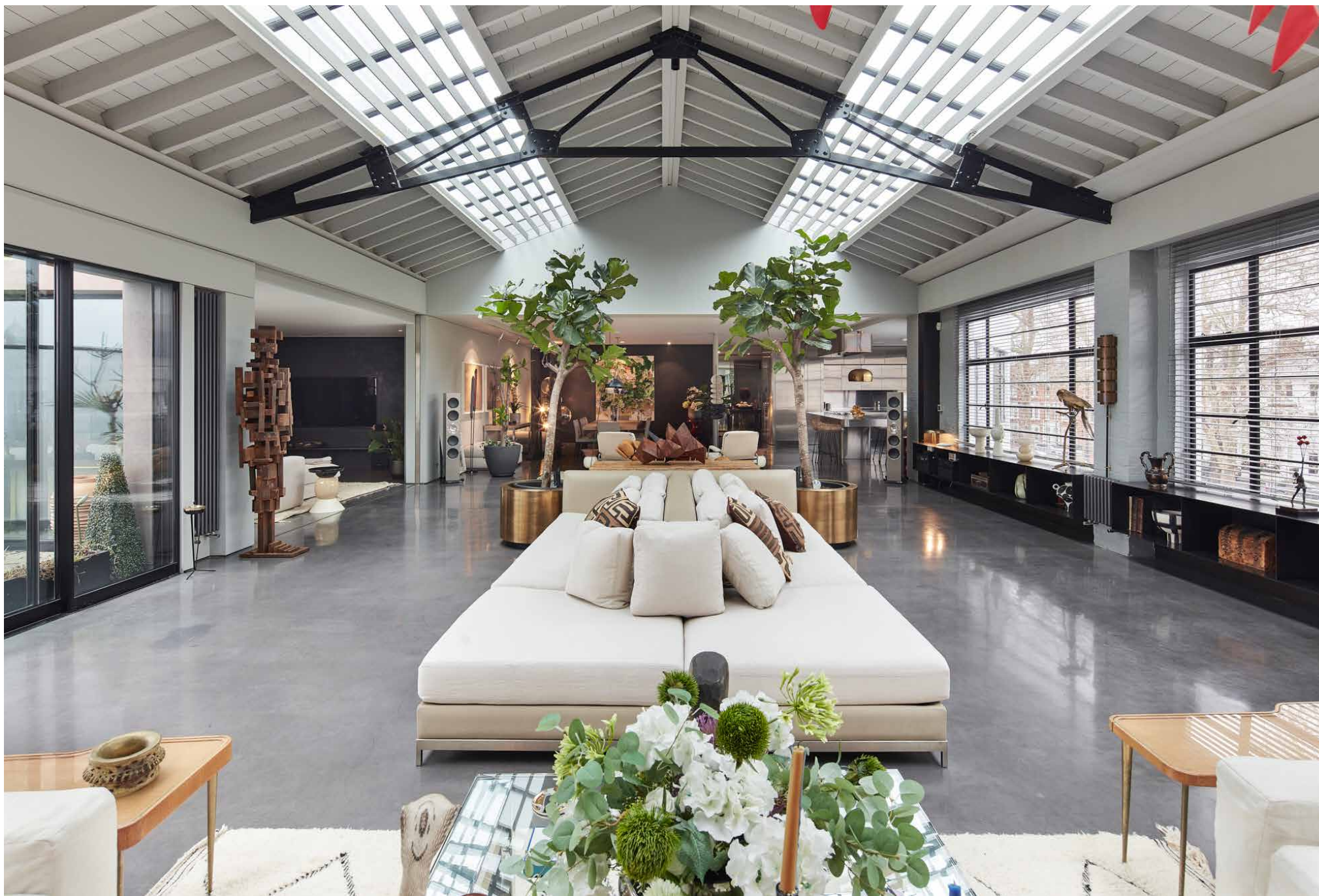


DOMUS NOVA



The Talisman Penthouse SW6 - £40,000 p/w (SL)

In partnership with **BARNES**
INTERNATIONAL REALTY





Widely acknowledged as one of the capital's finest examples of Art Deco architecture, The Talisman Building is a recognisable local landmark. Up on the second floor, the industrial proportions of this former garage and petrol station have been reimagined as a one-of-a-kind penthouse fit for 21st century city dwelling.

Set within a colossal 5,000 square foot sprawl, three bedrooms are arranged around a standout open-plan living room. A wall of original Crittall windows and a vaulted ceiling punctuated with huge skylights create a voluminous backdrop. Throughout, bold materials play a supporting role to the impressive bones of the building, while sleek geometric lines preserve a sense of the home's industrial heritage.





The industrial proportions of this former garage and petrol station have been reimagined as a one-of-a-kind penthouse

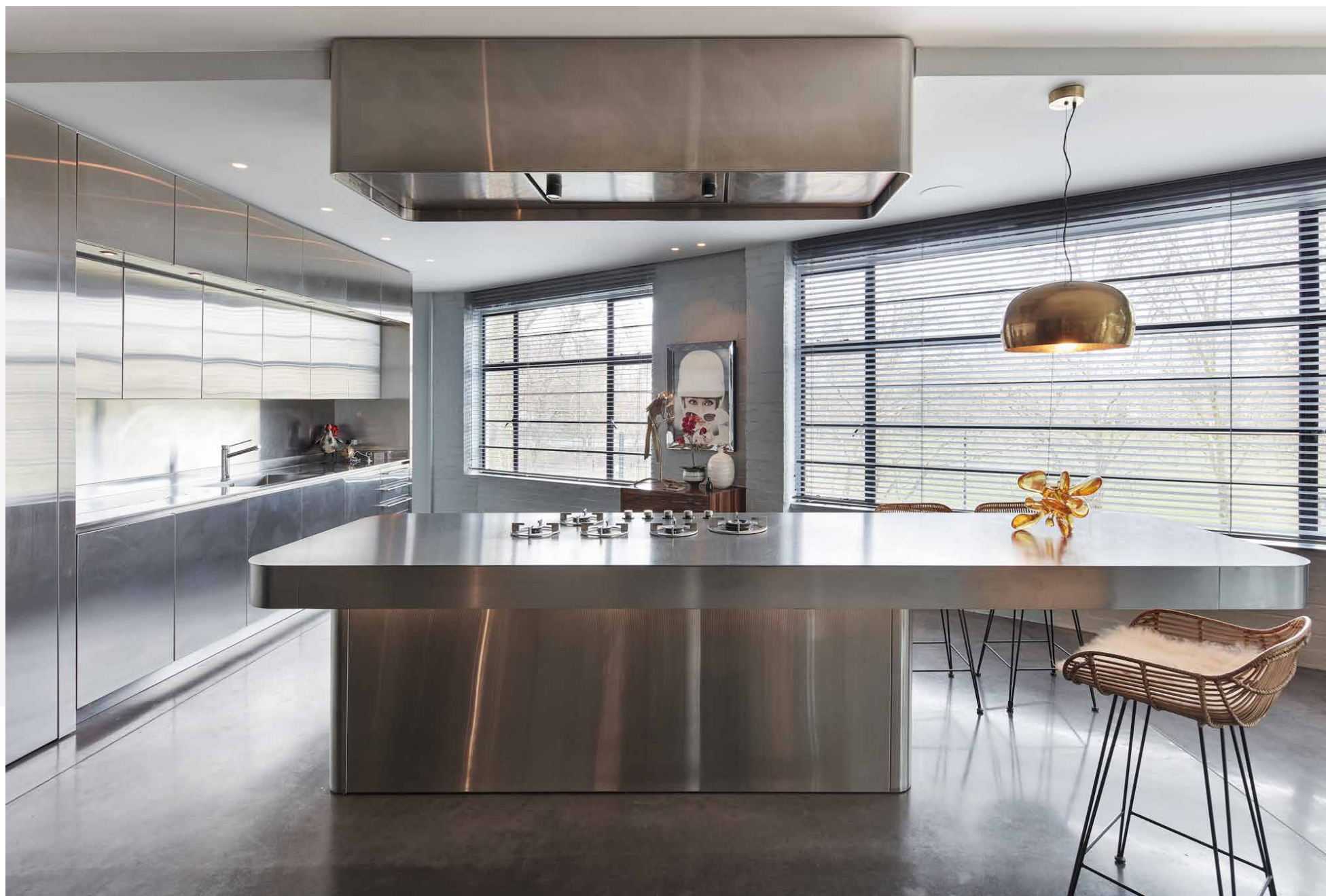




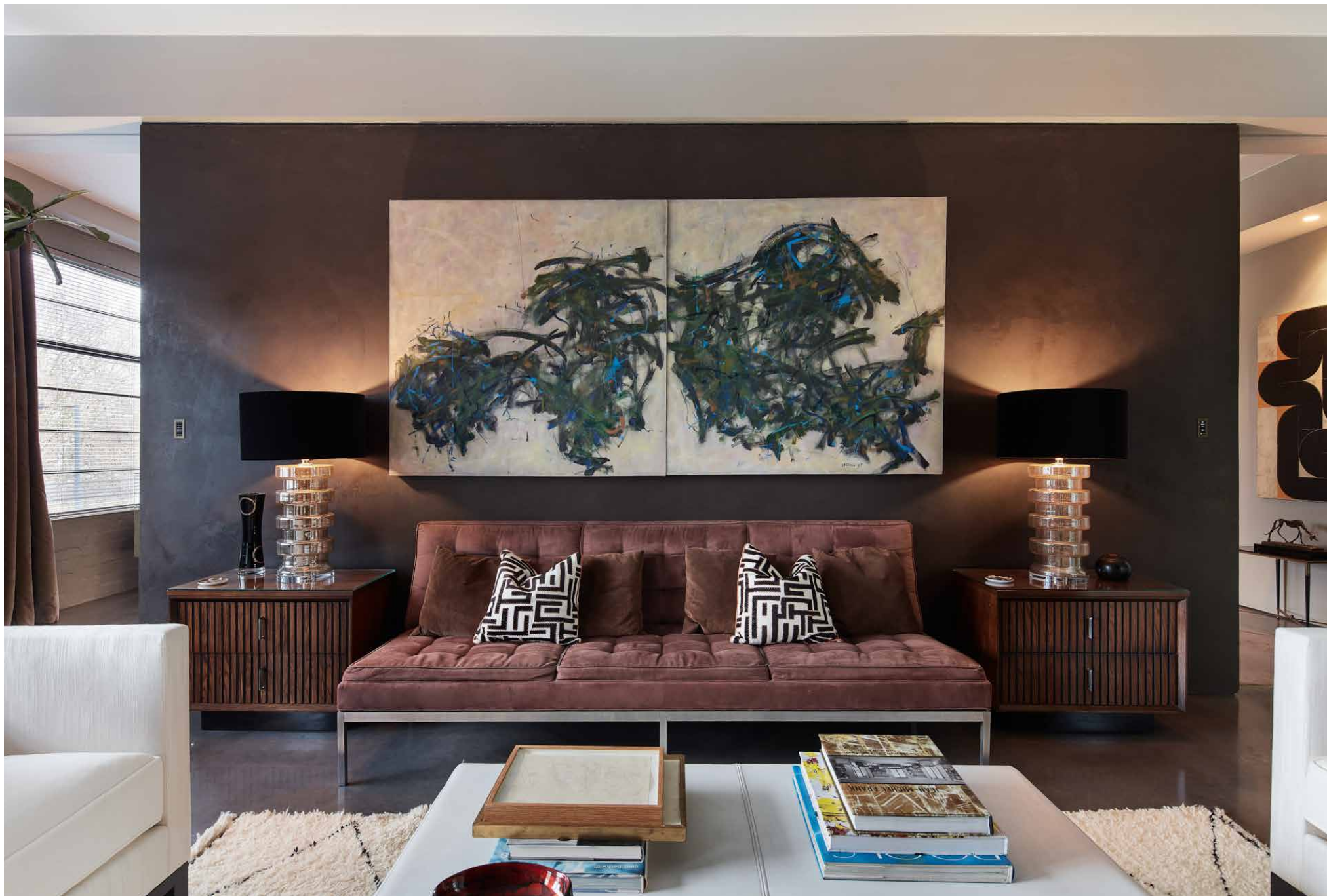


Imagined for entertaining, the living space is delineated between a chef-worthy stainless-steel kitchen and dining and living zones, including a snug-like media room that comes with a bar and access to a shower room. Among the many focal points here, a double-sided fireplace creates connections with a quiet study beyond.











True to form, the principal suite is a celebration of space and light. Finished with polished concrete floors and pared-back precision, its expansive footprint includes a huge dressing room, and a marble wrapped en suite bathroom with a freestanding tub at its centre. Slide open the floor-to-ceiling doors to a southeast-facing terrace, enclosed with panels of frosted glass.

At the other end of the apartment, two further guest suites await – all high ceilings and soothing tones – along with another office space and a convenient second kitchen and utility room.







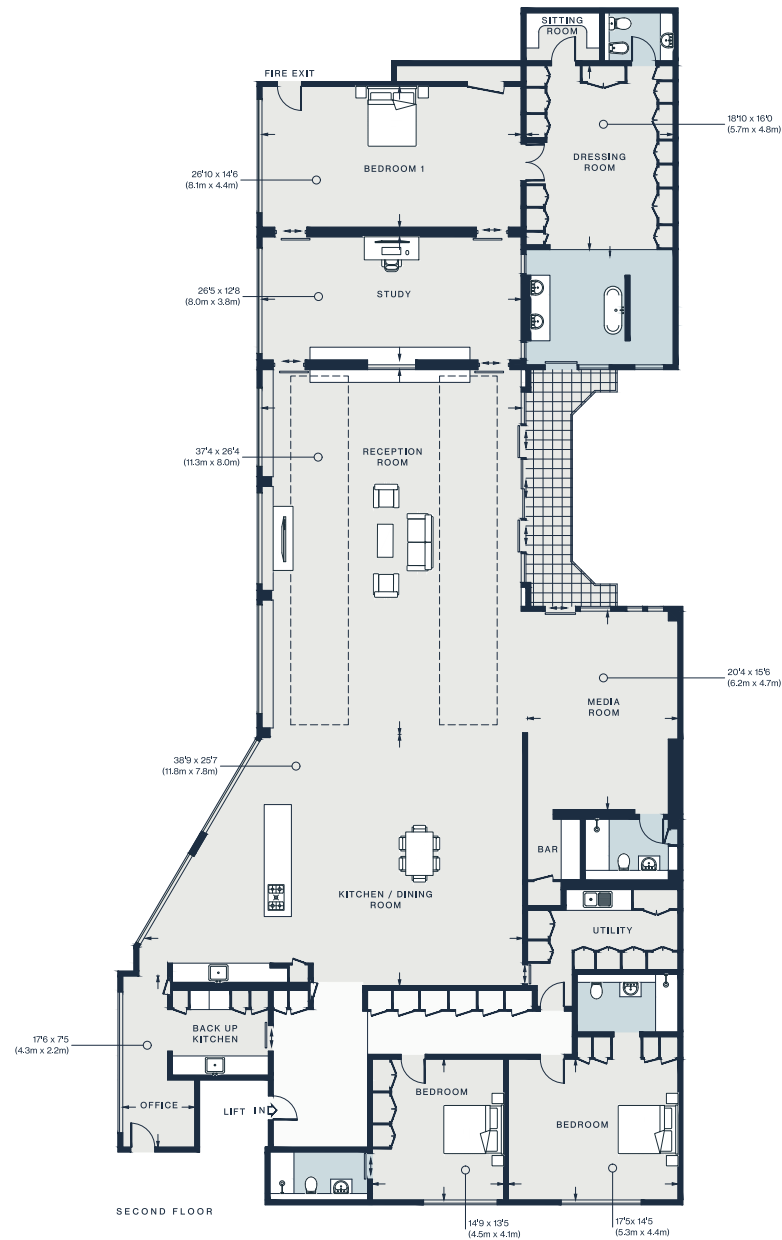












Approx. Gross Internal Area = 4,979 sq ft / 462.5 sq m

Floor plans are for illustrative purposes only and not to scale. Compliant with RICS code of measuring practice. Furniture layouts are indicative only. This property may be furnished, part-furnished or unfurnished. Please refer to your agent for details.

Property Details

3 Bedrooms, 3 Bathrooms

Historic Art Deco conversion by Gumuchdjian Architects

Striking 5,000 sq ft penthouse

Vast living space with vaulted ceilings and original Crittall windows

Contemporary kitchen

Media room with bar

Two study spaces

Sprawling principal suite with dressing room

Two further bedroom suites

Southeast-facing terrace

Secondary kitchen

Utility room

Off-street parking for one car

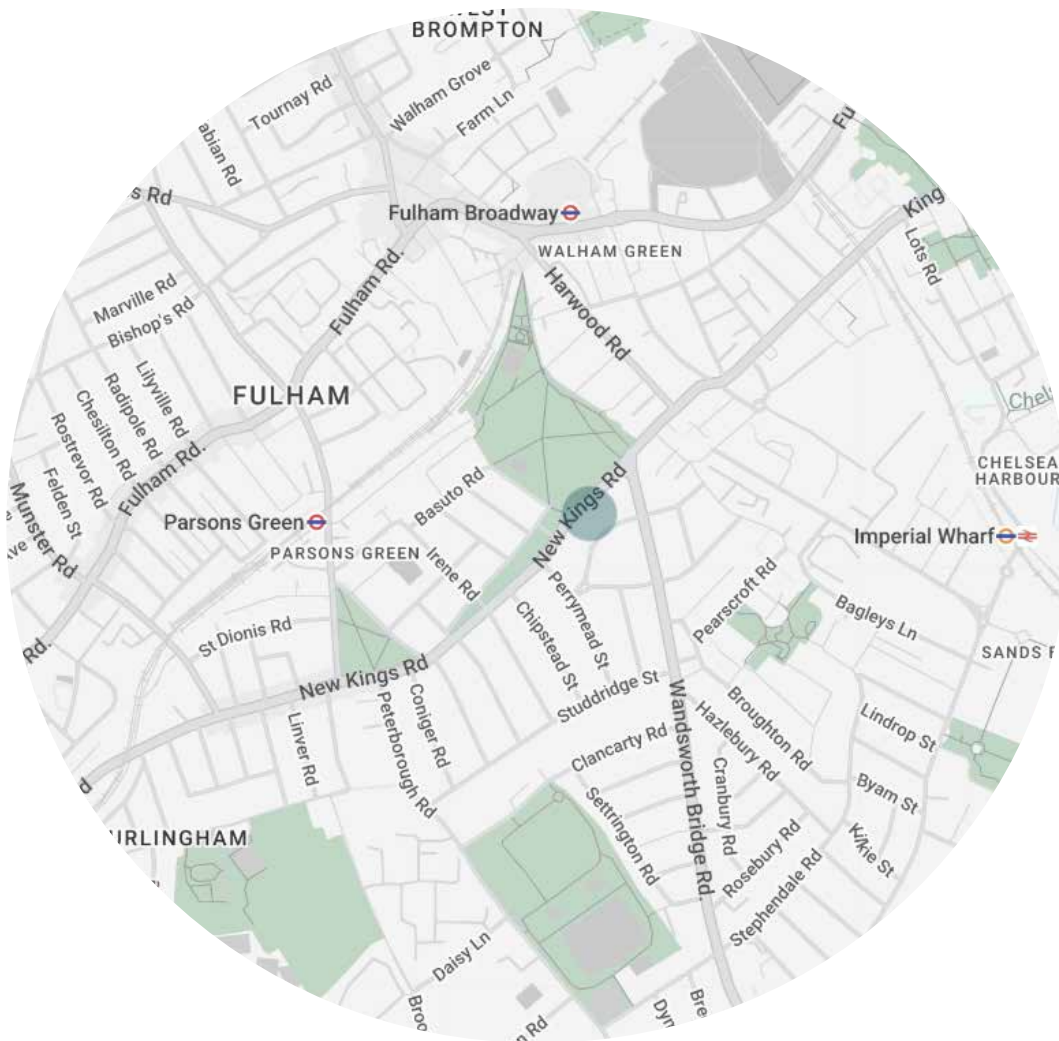
London Borough of Hammersmith and Fulham

Approx. 4,979 sq ft / 462.55 sq m

EPC=C

Deposit: £160,000 (SL)

Council Tax Band: G



Location

Overlooking Eel Brook Common and within walking distance to the River Thames, The Talisman Building offers moments of peace right in the heart of Fulham. Stroll to Parsons Green for coffee at St Clements, grocery shopping at Bayley & Sage or brunch at Hally's. For creative inspiration, check out the showrooms at The Design Centre at Chelsea Harbour and refuel with pastries from French deli Chanteroy. Make Brook House your local and be home in seconds.

Parsons Green – 10 mins (District)

Imperial Wharf – 12 mins (Overground)

Who — we are



Forward-thinkers in property, design and culture, we're an estate agency that hits refresh.

Domus Nova was born out of a desire to do things differently; to break the traditional agency model and focus on design-led homes in London and Ibiza, all while delivering the highest levels of personal service.

Our story starts in the nineties when we founded Notting Hill's first boutique agency – and we continue to open the doors to the most remarkable spaces, revealing them to our like-minded community.

We want to help you live better – and believe considered design can do that. That's why we remain committed to building on our legacy, in collaboration with BARNES International, an established agency with a market-leading presence in 22 countries.

Uniting our local insight and curated portfolio with BARNES International's expansive reach, we can facilitate the best opportunities in not only London and Ibiza, but also across Europe, the US and further afield – whether that's a château in the South of France, a penthouse in New York, or a chalet in the Swiss Alps.



DOMUS NOVA

Specialising in London
and Ibiza's design-led homes

Let's talk
020 7727 1717
lettings@domusnova.com

The property particulars are a guide not statements. Descriptions, photographs, and plans are for guidance and should be checked by the prospective tenant. The Property is offered "subject to contract and references". No warranties, representations, or Tenancy is given by Domus Nova. Expenses incurred by a prospective tenant will not be reimbursed if the Landlord withdraws prior to the Tenancy Agreement being signed, dated and exchanged and cleared funds received. Furniture and other items shown in a property at viewing may belong to a current tenant. The prospective tenant should verify in writing which fixtures and fittings forms part of the Tenancy. Our full lettings disclaimer together with trading names and our [Privacy Policy](#) is shown on our website

© 2025 Domus Nova in partnership with BARNES International. All rights reserved.

In partnership with
BARNES
INTERNATIONAL REALTY