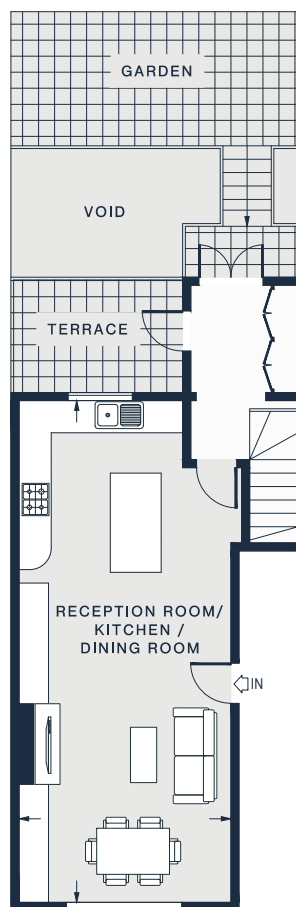


LOWER GROUND FLOOR



RAISED GROUND FLOOR

RECEPTION / KITCHEN /
DINING ROOM
30'8 x 12'7 (9.3m x 3.8m)

BEDROOM 1
17'2 x 9'8 (5.2m x 2.9m)

BEDROOM 2
13'0 x 11'4 (3.9m x 3.4m)

BEDROOM 3
9'3 x 8'10 (2.8m x 2.6m)

Approx. Gross Internal Area = 1,223 sq ft / 113.6 sq m

Floor plans are for illustrative purposes only and not to scale. Compliant with RICS code of measuring practice. Furniture layouts are indicative only. This property may be furnished, part-furnished or unfurnished. Please refer to your agent for details.