

DOMUS NOVA

Talbot Road

Bayswater W2

APPROXIMATE GROSS INTERNAL AREA

541 sq ft / 50.3 sq m

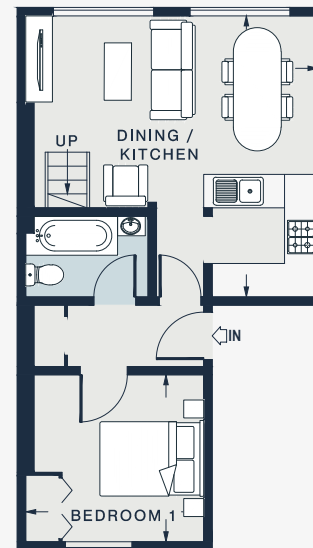
020 7221 7817

domusnova.com

LONDON | IBIZA



MEZZANINE



FIRST FLOOR

DINING / KITCHEN
17'3 x 16'4 (5.2m x 5.0m)

BEDROOM 1
10'5 x 9'10 (3.2m x 3.0m)

BEDROOM 2
17'3 x 8'2 (5.2m x 2.5m)

Floor plans are for illustrative purposes only and not to scale. Compliant with RICS code of measuring practice.