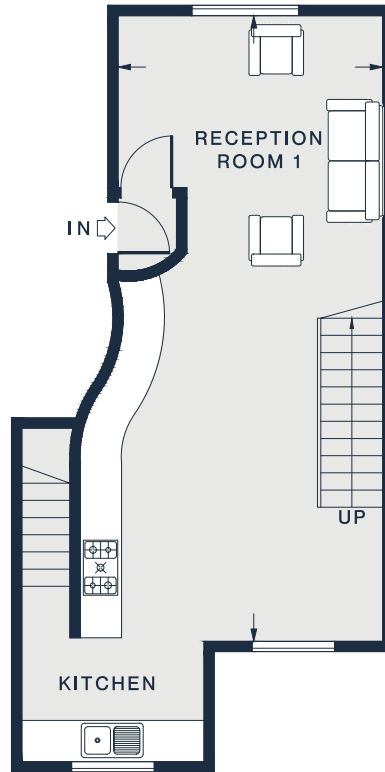
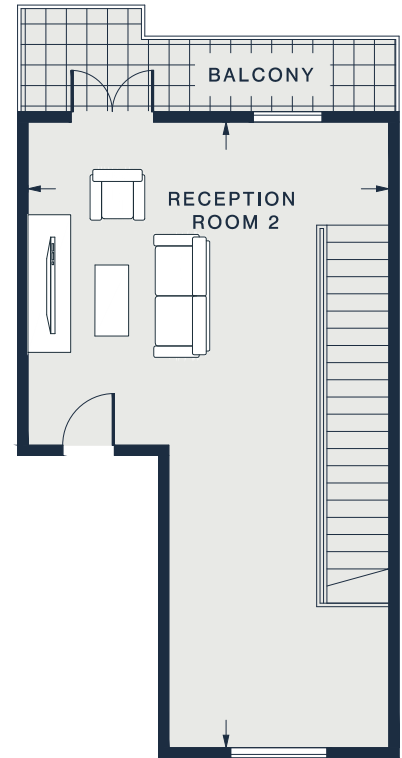


LOWER  
GROUND FLOOR



RAISED  
GROUND FLOOR



FIRST FLOOR

RECEPTION ROOM 1  
30'2 x 12'8 (9.1m x 3.8m)

---

KITCHEN  
8'8 x 5'10 (2.6m x 1.7m)

---

BEDROOM 2  
14'2 x 9'3 (4.3m x 2.8m)

---

RECEPTION ROOM 2  
29'8 x 17'4 (9.0m x 5.2m)

---

MAIN BEDROOM  
17'4 x 11'0 (5.2m x 3.3m)

---

BEDROOM 3  
12'10 x 11'2 (3.9m x 3.4m)

---

Approx. Gross Internal Area = 1581 sq ft / 146.85 sq m

---

Floor plans are for illustrative purposes only and not to scale. Compliant with RICS code of measuring practice.  
Prepared for Domus Nova. Copyright © All Rights Reserved.