

DOMUS NOVA

Talbot Road

Notting Hill W11

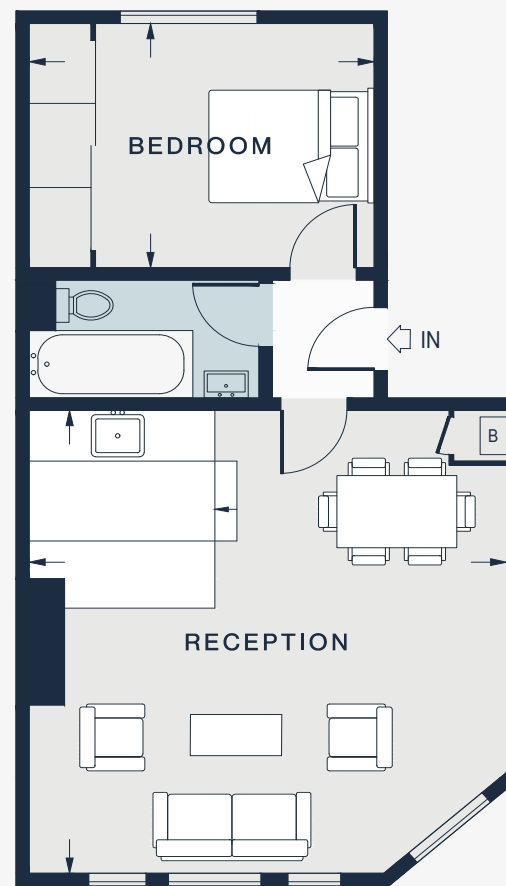
APPROXIMATE GROSS INTERNAL AREA

495 sq ft / 46 sq m

020 7727 1717

domusnova.com

LONDON | IBIZA



FIRST FLOOR

KITCHEN / RECEPTION

18'2 x 17'10 (5.5m x 5.4m)

BEDROOM

12'8 x 9'5 (3.9m x 2.9m)

Approx. Gross Internal Area = 495 sq ft / 46 sq m

Floor plans are for illustrative purposes only and not to scale. Compliant with RICS code of measuring practice. Furniture layouts are indicative only. This property may be furnished, part-furnished or unfurnished. Please refer to your agent for details.