

DOMUS NOVA

Talbot Road

Bayswater W2

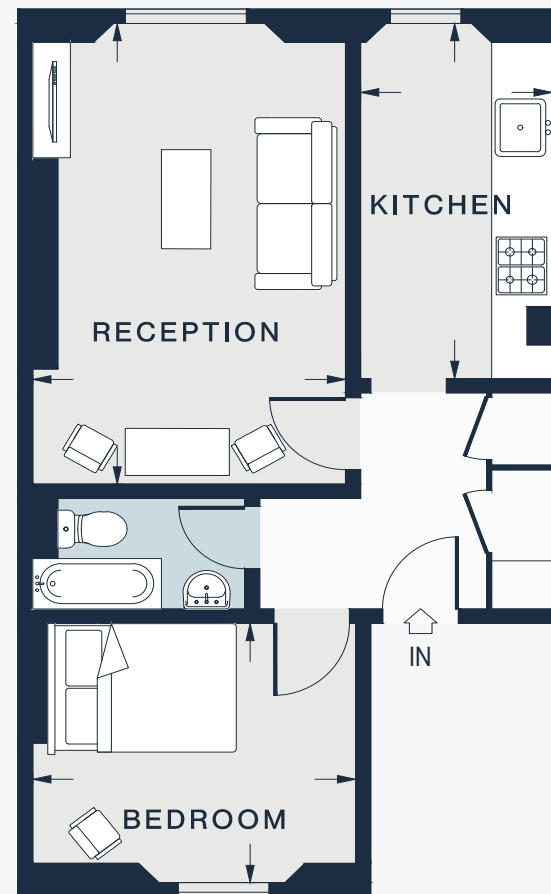
APPROXIMATE GROSS INTERNAL AREA

436 sq ft / 41.0 sq m

020 7727 1717

domusnova.com

LONDON | IBIZA



SECOND FLOOR

RECEPTION

15'10 x 10'5 (4.8m x 3.1m)

KITCHEN

12'4 x 6'4 (3.7m x 1.9m)

BEDROOM

10'9 x 8'10 (3.2m x 2.7m)

Approx. Gross Internal Area = 436 sq ft / 41.0 sq m

Floor plans are for illustrative purposes only and not to scale. Compliant with RICS code of measuring practice. Furniture layouts are indicative only. This property may be furnished, part-furnished or unfurnished. Please refer to your agent for details.