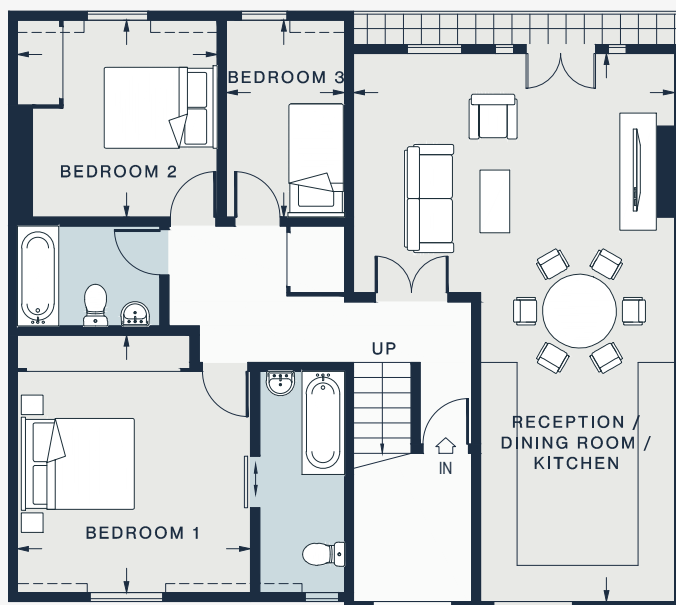


FOURTH FLOOR



THIRD FLOOR

RECEPTION / DINING ROOM / KITCHEN

29'8 x 17'4 (9.0m x 5.2m)

BEDROOM 2

11'0 x 10'7 (3.3m x 3.2m)

BEDROOM 1

12'7 x 12'6 (3.8m x 3.8m)

BEDROOM 3

10'7 x 6'6 (3.2m x 1.9m)

Approx. Gross Internal Area = 1,012 sq ft / 94.0 sq m

Floor plans are for illustrative purposes only and not to scale. Compliant with RICS code of measuring practice.