

DOMUS NOVA

Talbot Road

Bayswater W2

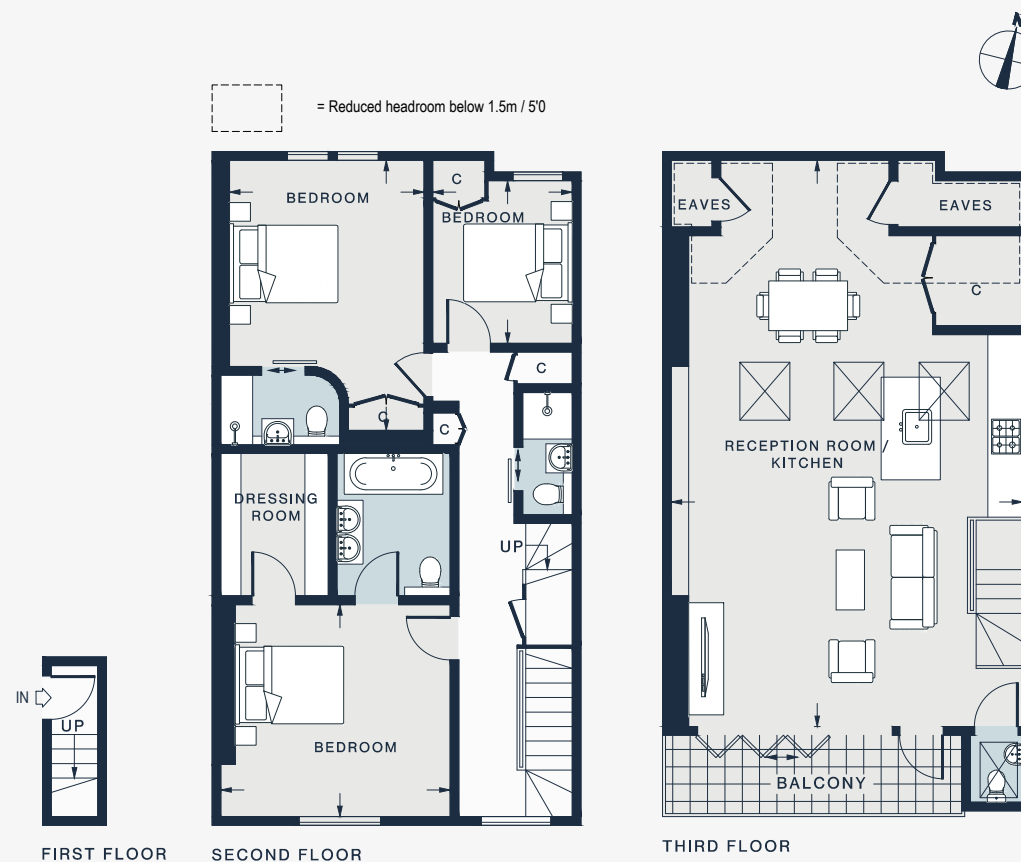
APPROXIMATE GROSS INTERNAL AREA

1,392 sq ft / 129.3 sq m

020 7727 1717

domusnova.com

LONDON | IBIZA



BEDROOM
15'4 x 11'0 (4.7m x 3.3m)

BEDROOM
13'0 x 12'0 (4.0m x 3.7m)

BEDROOM
9'3 x 7'11 (2.8m x 2.4m)

RECEPTION ROOM / KITCHEN
31'8 x 19'10 (9.6m x 6.0m)

Approx. Gross Internal Area = 1392 sq ft / 129.3 sq m
(Including Reduced Headroom)

Floor plans are for illustrative purposes only and not to scale. Compliant with RICS code of measuring practice.
Furniture layouts are indicative only. This property may be furnished, part-furnished or unfurnished. Please refer to your agent for details.