

# DOMUS NOVA



Sutton Court Road W4  
£5,000,000





Kerb appeal meets considered design at this imposing five-bedroom family home for sale that leaves a lasting impression.

Set behind cast iron railings and neatly trimmed hedges, this double-fronted redbrick home makes its presence felt. From its crow-stepped gables to its bell roof, Sutton Court Road features a checklist of impressive architectural credentials. Its heritage framework also offers modern functionality, with a large garage and gated off-street parking.

Inside, a grand entrance hall hints at the ample proportions that await throughout, while decorative cornicing, a cast iron fireplace and chequered black and white floor tiles elevate the space. To one side, a triple-aspect reception room spans the length of the ground floor, carved into distinct zones for reading, working, socialising and kicking back. An antechamber with high-level stained-glass windows has been fashioned as a library, with custom-made bookcases. Cream carpet and neutral-toned walls thread the spaces together, with high ceilings adding to the sense of openness.

Off the other side of the hallway, an expansive kitchen-diner is designed for entertaining. Subtly embossed wallpaper backdrops the more formal section of the room, which can accommodate a 12-seater dining table. Modernity takes the reigns in the culinary half, where floor-to-ceiling windows stretch across the entire back wall, framing views to the garden. Walls are finished in sage tones with white handleless cupboards and integrated Gaggenau appliances adding a streamlined feel. Mirrored splashbacks reflect the trees beyond, inviting the outside in. Weather permitting, the patio invites al fresco dining, bordered by a wraparound lawn.









































Impressive proportions continue to unfold upstairs. On the first floor, the principal suite spans a spacious dressing room with custom-made cabinetry and an en suite featuring a separate bath and shower. Palm wallpaper adds to the sumptuous finish, while a large bay window lets in the light. Also on this floor, a further bedroom is served by a family bathroom complete with roll top bath and statement wallpaper and tiles.

Upstairs, three additional bedrooms are enlivened with vibrant wallpaper and bright hues. The largest features an en suite shower room and a walk-in cupboard, while another is styled as a snug with floor-to-ceiling bookshelves. Elsewhere, a cellar and loft provide additional storage space to meet the demands of family life.











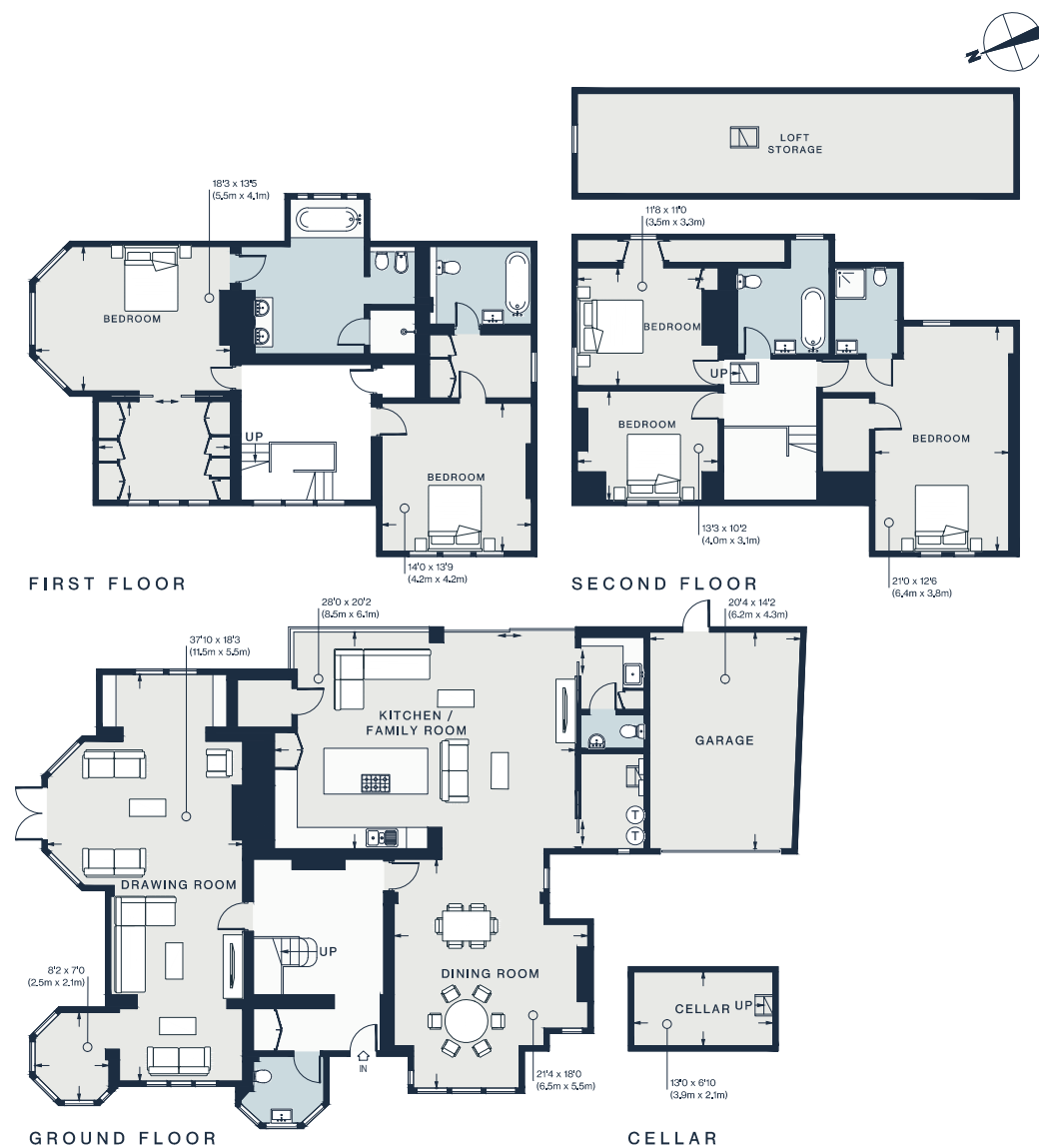










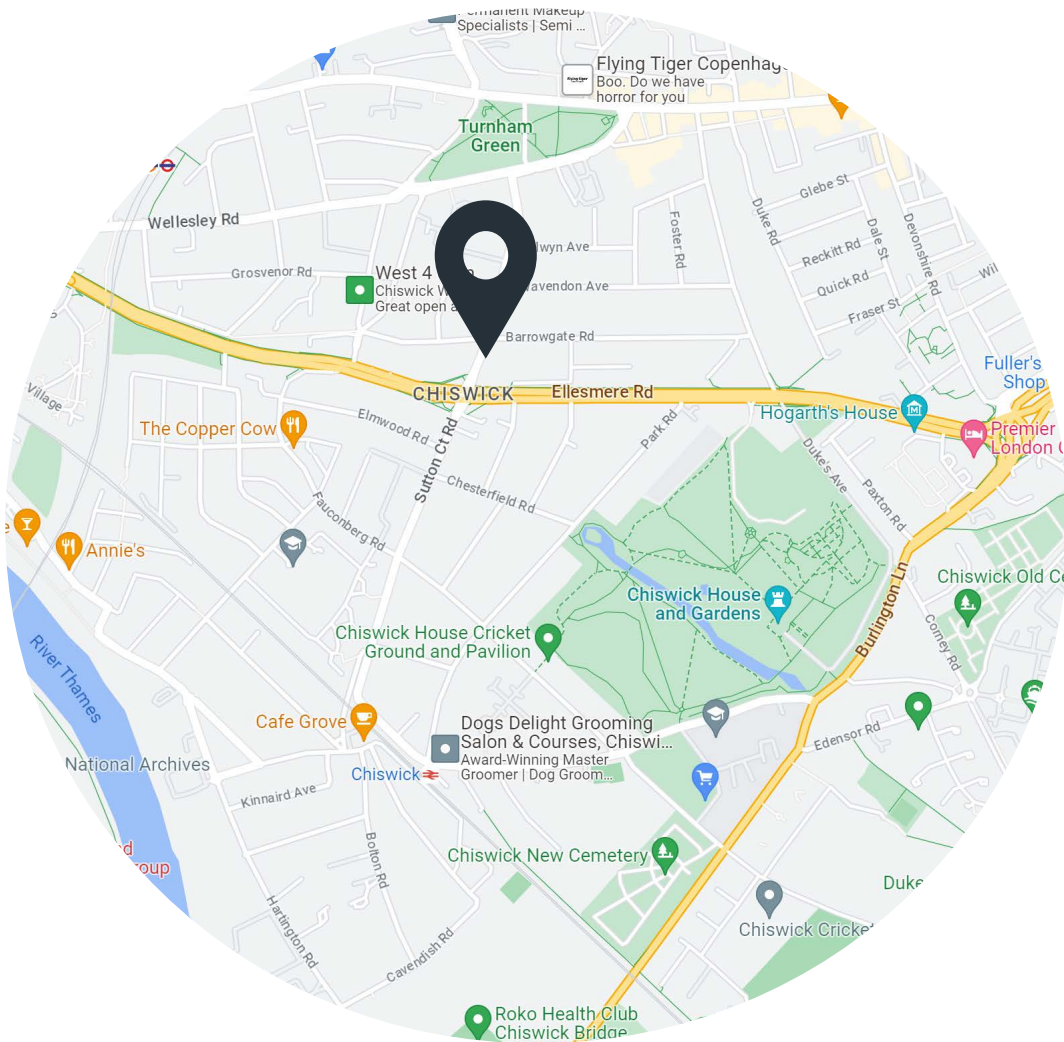


## Property Details

Triple aspect reception room with library  
Contemporary kitchen, dining and family room with garden access  
Principal bedroom suite with dressing room  
One further guest suite  
Three further bedrooms  
Two family bathrooms  
Tree-lined garden  
Garage with gated off-street parking  
Cellar  
London Borough of Hounslow

Approx. 4,728 sq ft / 439.2 sq m  
EPC - E  
Council tax - H  
Freehold





## Location

Sitting between the leafy expanses of Turnham Green at the 65-acre gardens at Chiswick House, there's a relaxed feel to this neighbourhood focused enclave. On the doorstep, the restaurants and independent shops of Turnham Green Terrace and Chiswick High Road, together with riverside walks along the Thames. Grab a flat white at Rhythm & Brews, or a glass of wine at deli-cum-bar Hack & Veldt. Come evening, pull up a seat on the terrace at Villa di Geggiano or enjoy French fine dining at La Trompette.

Chiswick Park – 10 mins (District)

Chiswick – 12 mins (National Rail)



Specialising in London  
and Ibiza's design-led homes

Let's talk  
020 7221 7817  
sales@domusnova.com  
domusnova.com

The particulars above are a guide, not an offer or contract. Descriptions, photographs and plans are not statements or representations of fact. Measurements are approximate and not to scale. Prospective purchasers must verify the accuracy of the information within the particulars. Domus Nova does not give any representations or warranties; nor represent the Seller legally. Domus Nova has no liability, for any costs, losses or expenses incurred by the Seller or a prospective buyer relating to the sales and buying transaction.

Our Sales Disclaimer, trading names and privacy policy on how your data is processed and used is found in full on our website in our [Privacy Statement](#).

© Domus Nova 2023. All rights reserved.