

DOMUS NOVA

Sutherland Place

Bayswater W2

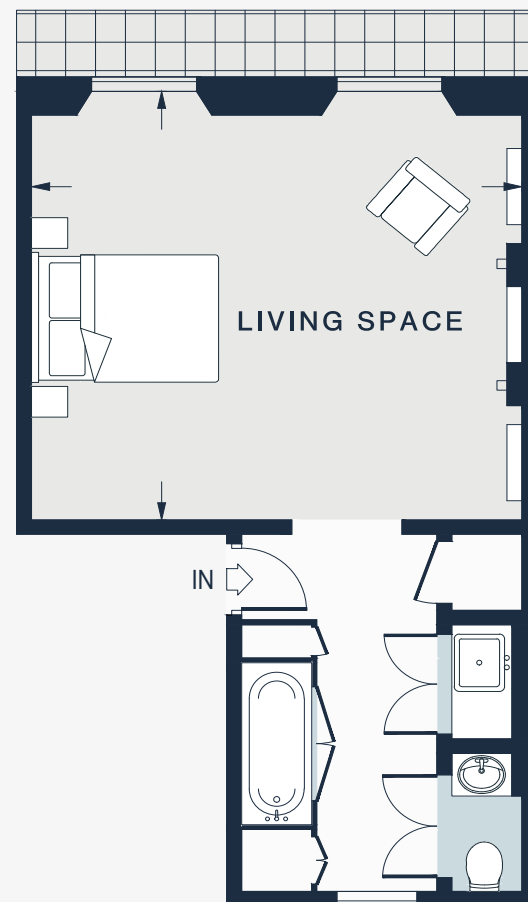
APPROXIMATE GROSS INTERNAL AREA

349 sq ft / 32.4 sq m

020 7727 1717

domusnova.com

LONDON | IBIZA



FIRST FLOOR

LIVING SPACE

16'1 x 14'8 (4.9m x 4.4m)

Approx. Gross Internal Area = 349 sq ft / 32.4 sq m

Floor plans are for illustrative purposes only and not to scale. Compliant with RICS code of measuring practice. Furniture layouts are indicative only. This property may be furnished, part-furnished or unfurnished. Please refer to your agent for details.