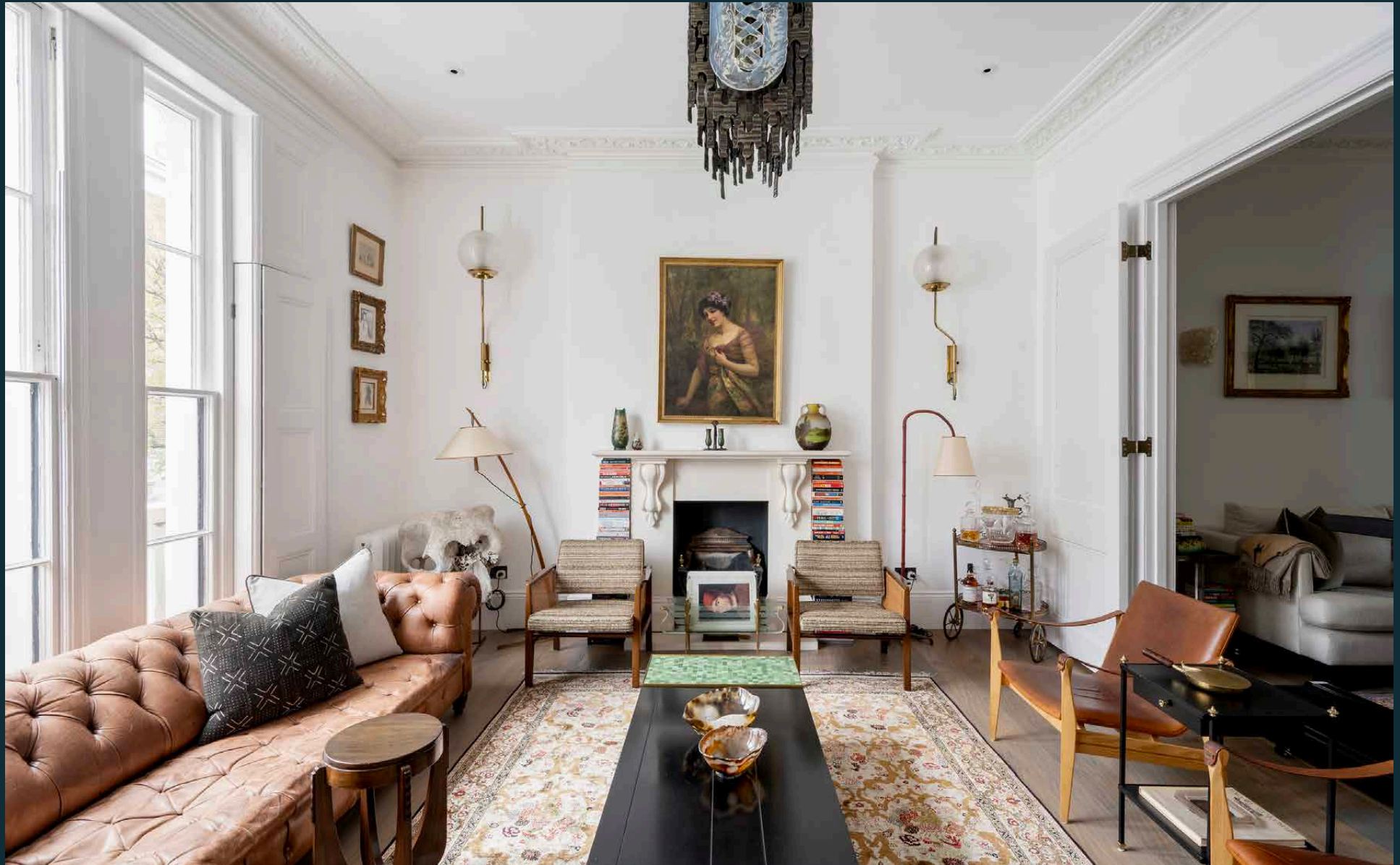


DOMUS NOVA



Sussex Street W11
£9,000 p/w - Short Let



A treasure trove of timeless design. Arranged over five floors, this five-bedroom townhouse in Pimlico draws together light-filled spaces and one-off artworks.

On an elegant street a stone's throw from The River Thames, the handsome frontage of an eclectic home pays homage to its prestigious postcode. Tall columns flank the raised entrance. Inside, a stone fireplace and soaring ceilings set the scene in the dining room. An expansive sash window with white wooden shutters draws in natural light to illuminate the dining space. In the corner of the room, a compact bar.

Hardwood flooring flows through a vestibule living space and into the kitchen. A departure from the aesthetic of the dining room, the eat-in kitchen is characterised by contemporary design principles.





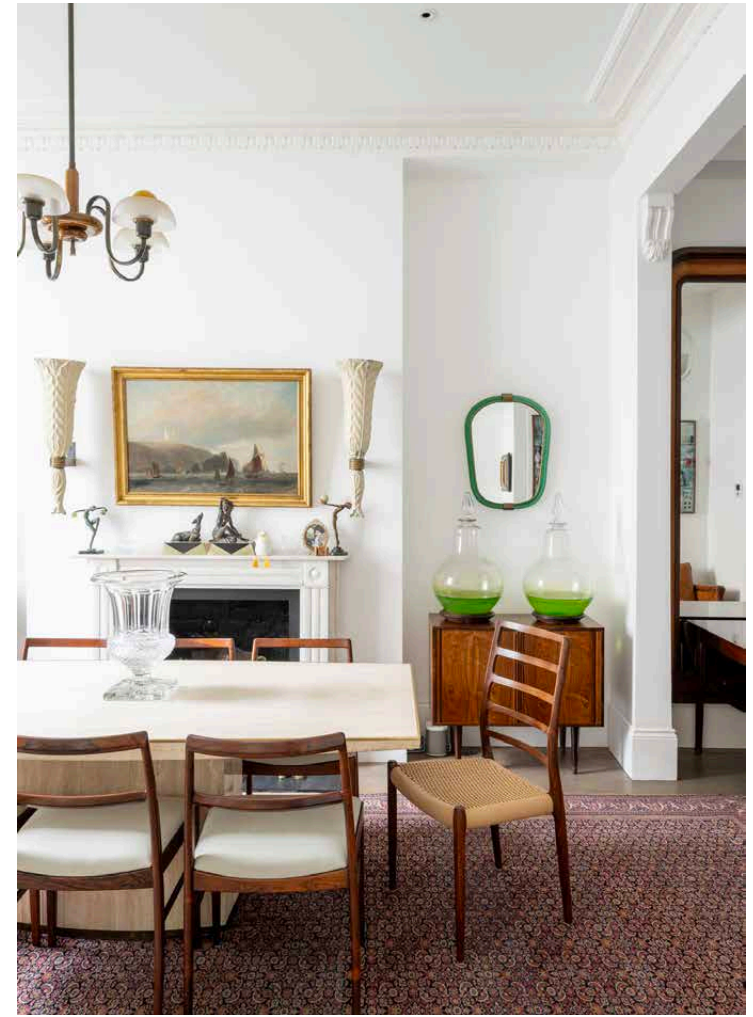
“ A trio of windows sheds light on a hive of artwork, curios and distinguished furnishings.

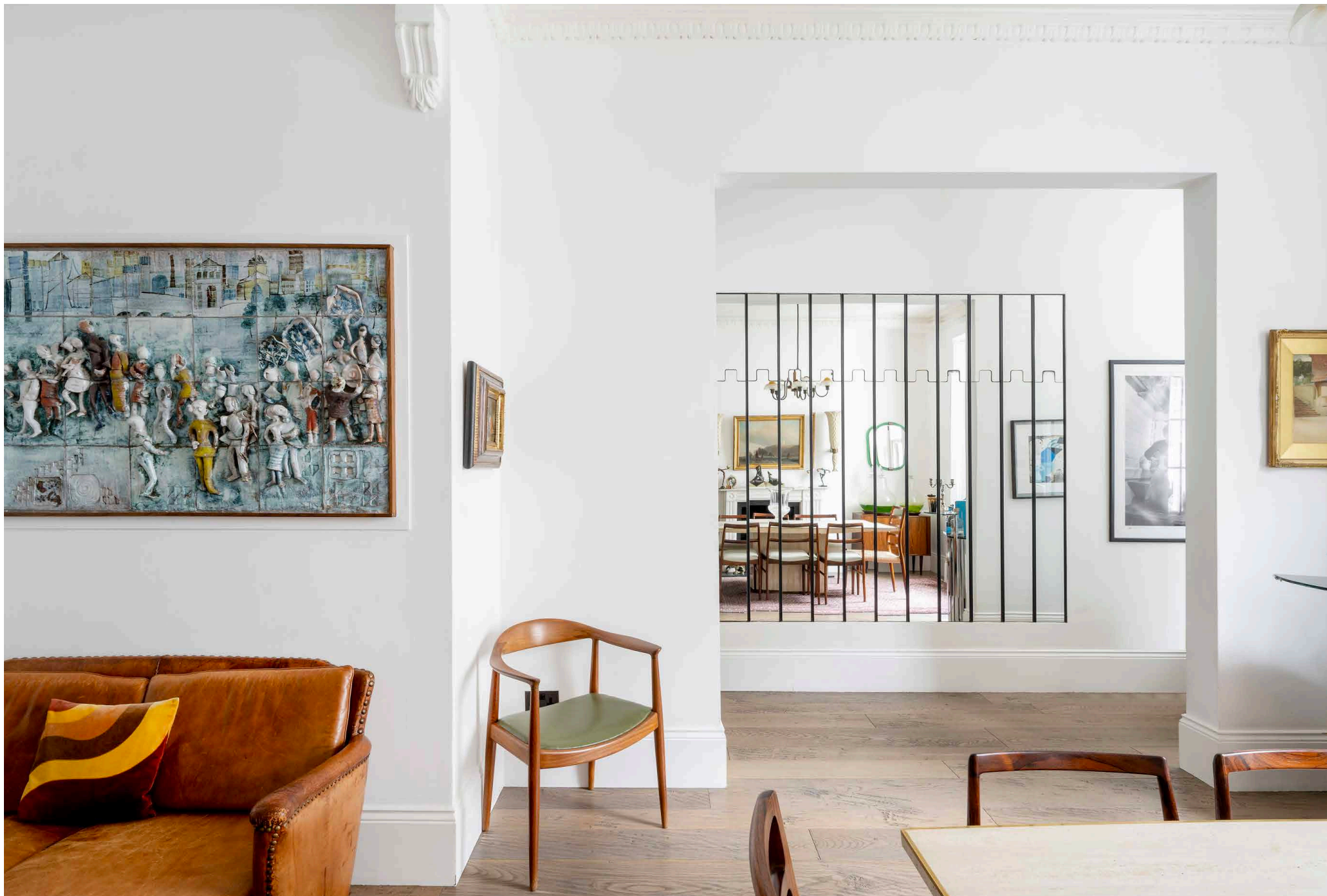


From a comfortable dining snug with French doors leading outside, the space expands into a modern kitchen with period proportions. A vast window stretches to the ceiling, framing verdant views and accentuating the room's height. A book-matched marble backsplash echoes the finish of the worktops. Meanwhile, minimalistic cabinetry and integrated Gaggenau appliances create a clean-lined look.

A convivial reception room dominates the first floor. Grounded by a grand fireplace, a trio of windows sheds light on a hive of artwork, curios and distinguished furnishings. Above, intricate cornicing crowns the ceiling. Double doors lead into a large study that enjoys a south-facing roof terrace.











JAMIE'S GREAT BRITAIN



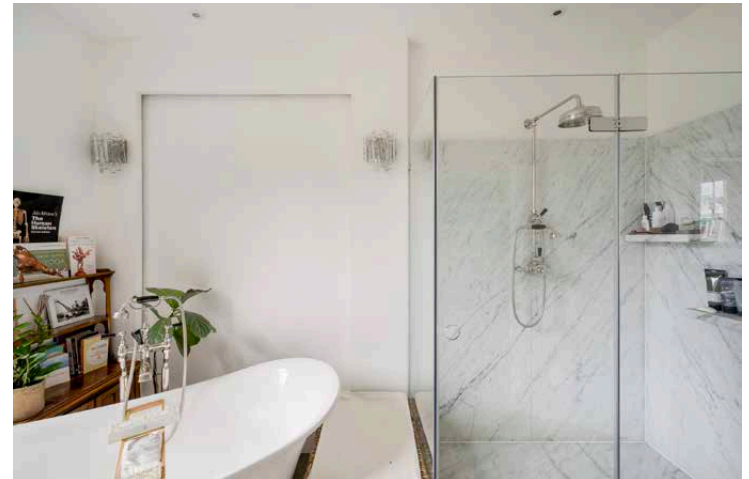


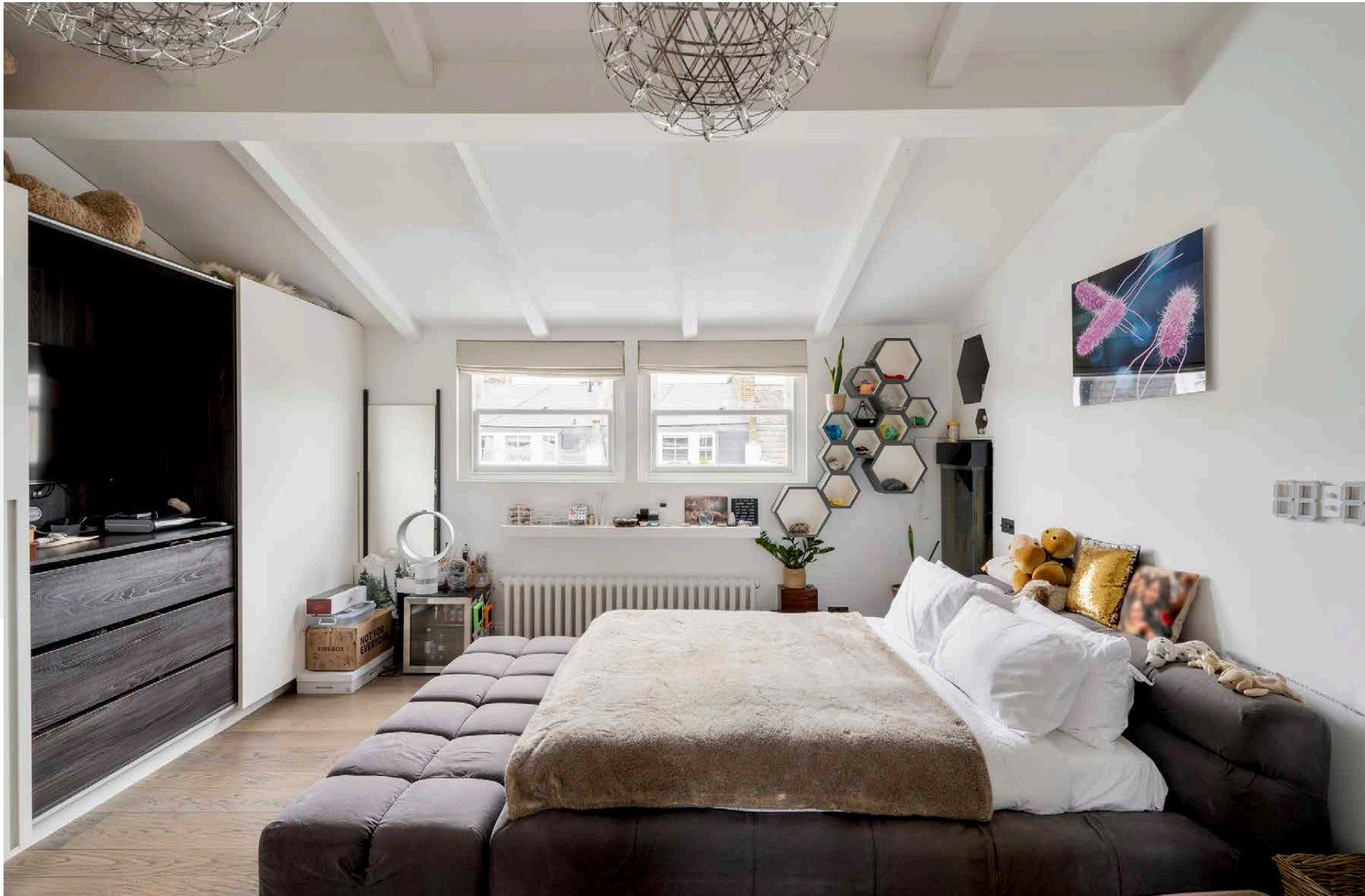


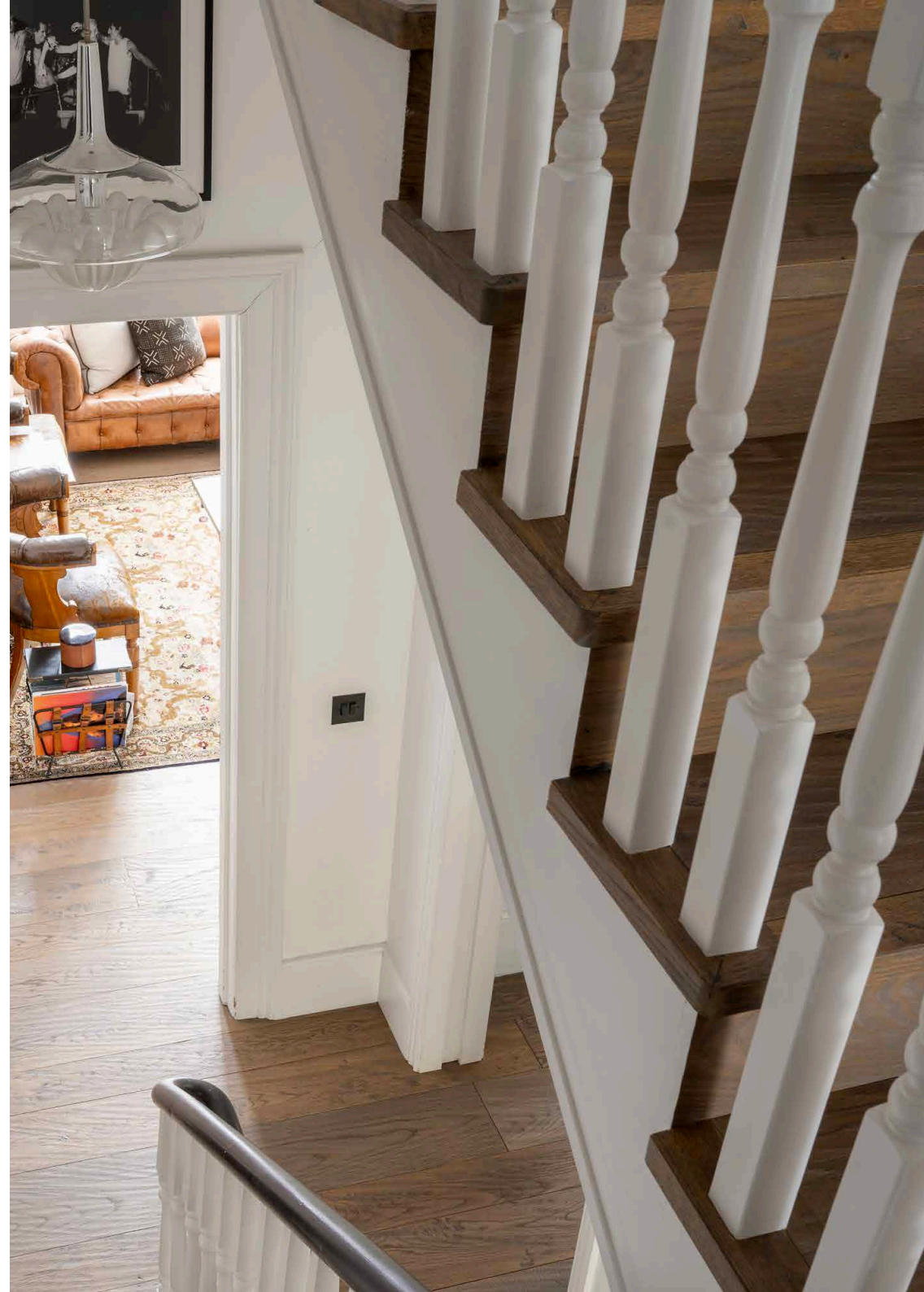
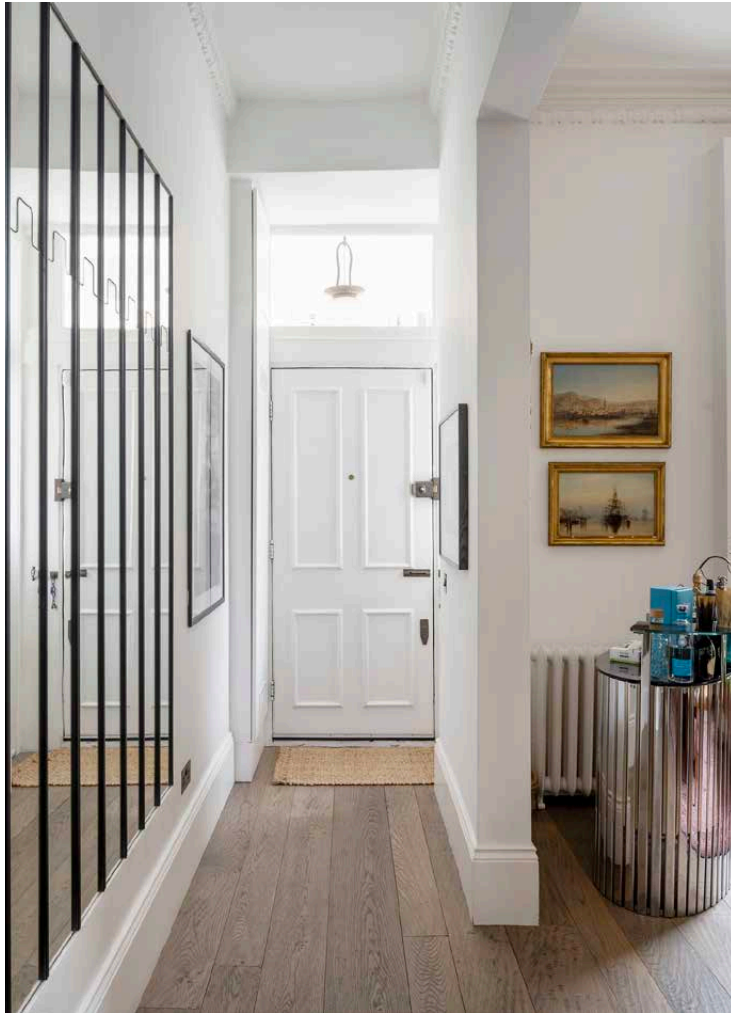
The principal bedroom suite takes the second floor. This serene space draws together wood flooring, a bank of fitted wardrobes and a sophisticated bathroom with a freestanding rolltop bath, dual vanity and walk-in shower. On the third level, a guest bedroom benefits from concealed storage and a distinctive ensuite pairing dark tiles with a rainfall shower.

The lower ground floor features one further bedroom suite with a living area, in addition to a bedroom, family bathroom and an open-plan reception and kitchen. From here, floor-to-ceiling glazing provides a perspective on the leafy retreat beyond.

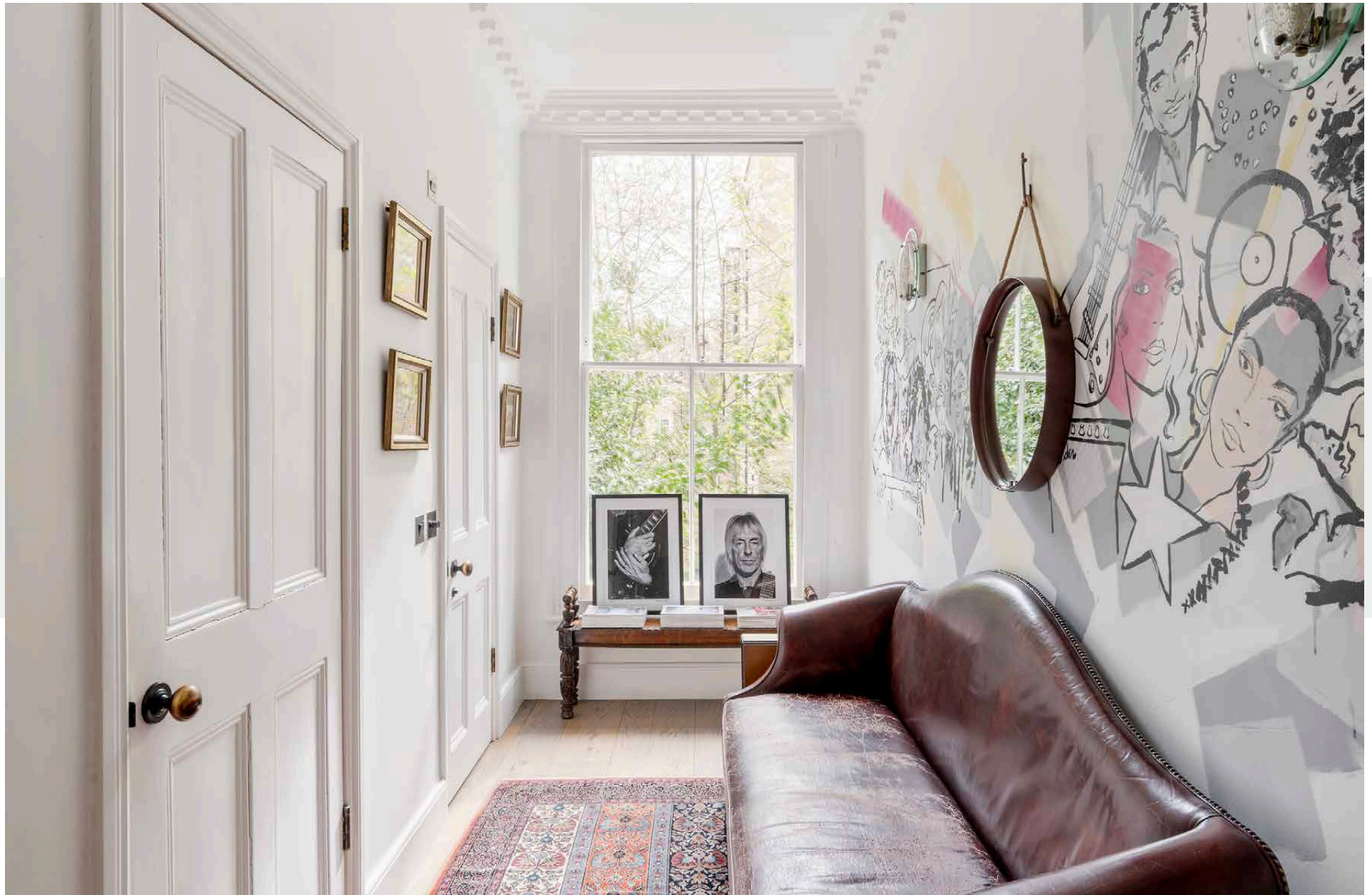


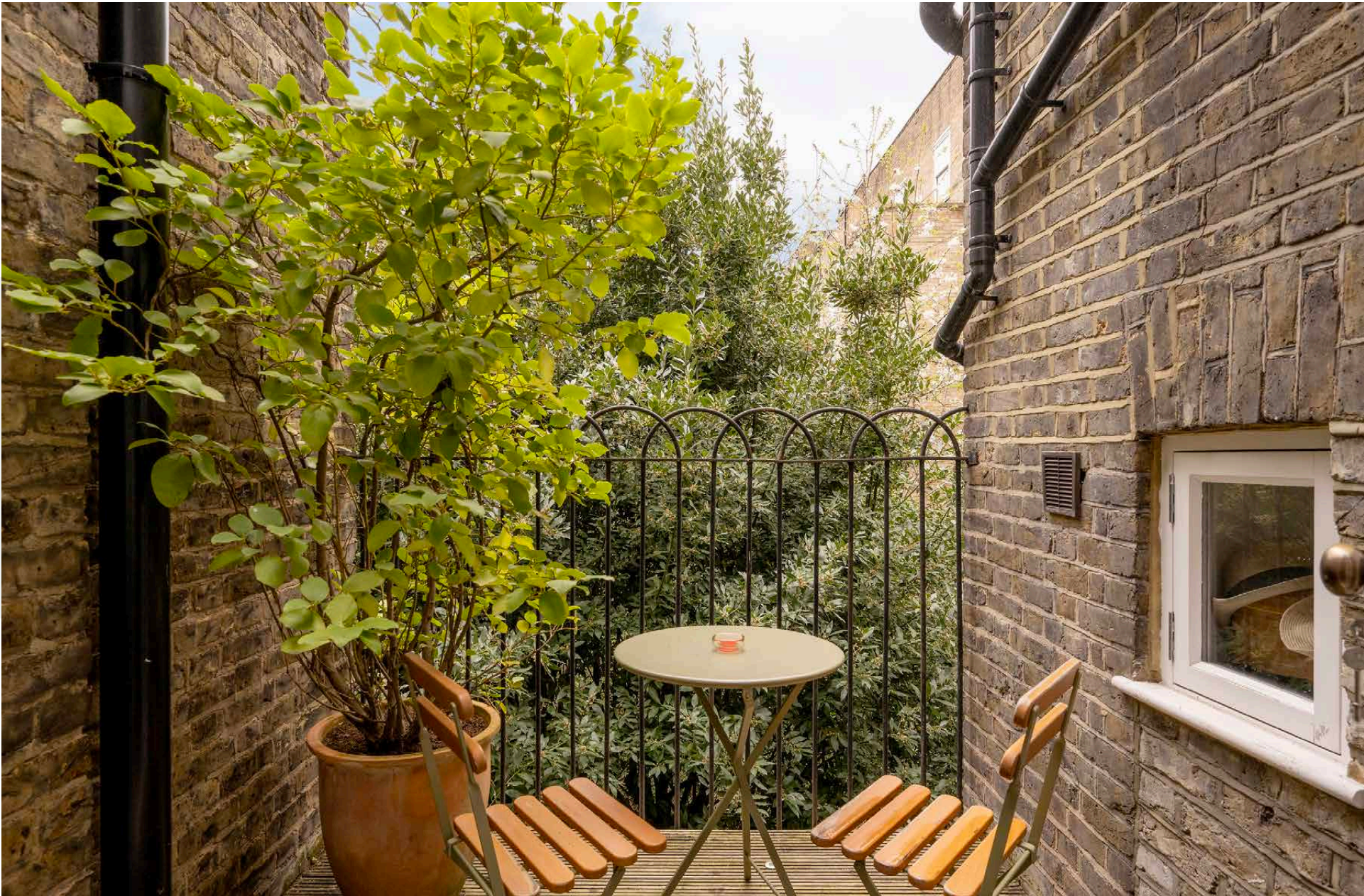




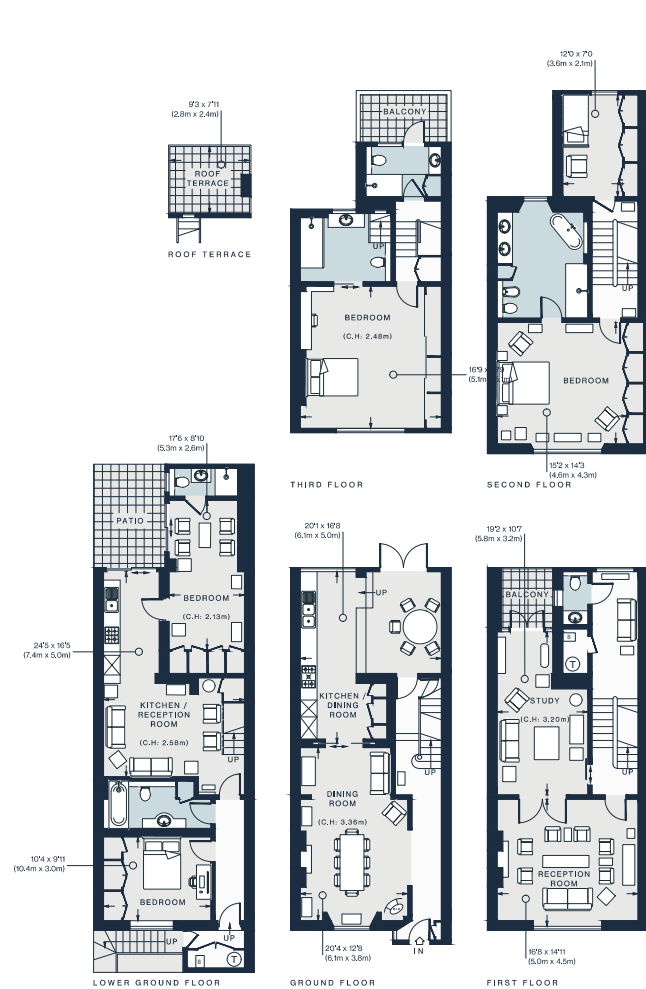












Property Details

- Two reception rooms
- Two kitchens
- Dining room
- Principal bedroom suite
- Two further bedroom suites
- One further bedroom
- Flexible bedroom or storage space
- Two further bathrooms
- Guest cloakroom
- Several terraces
- City of Westminster

Approx 3,234 sq ft / 300.4 sq m

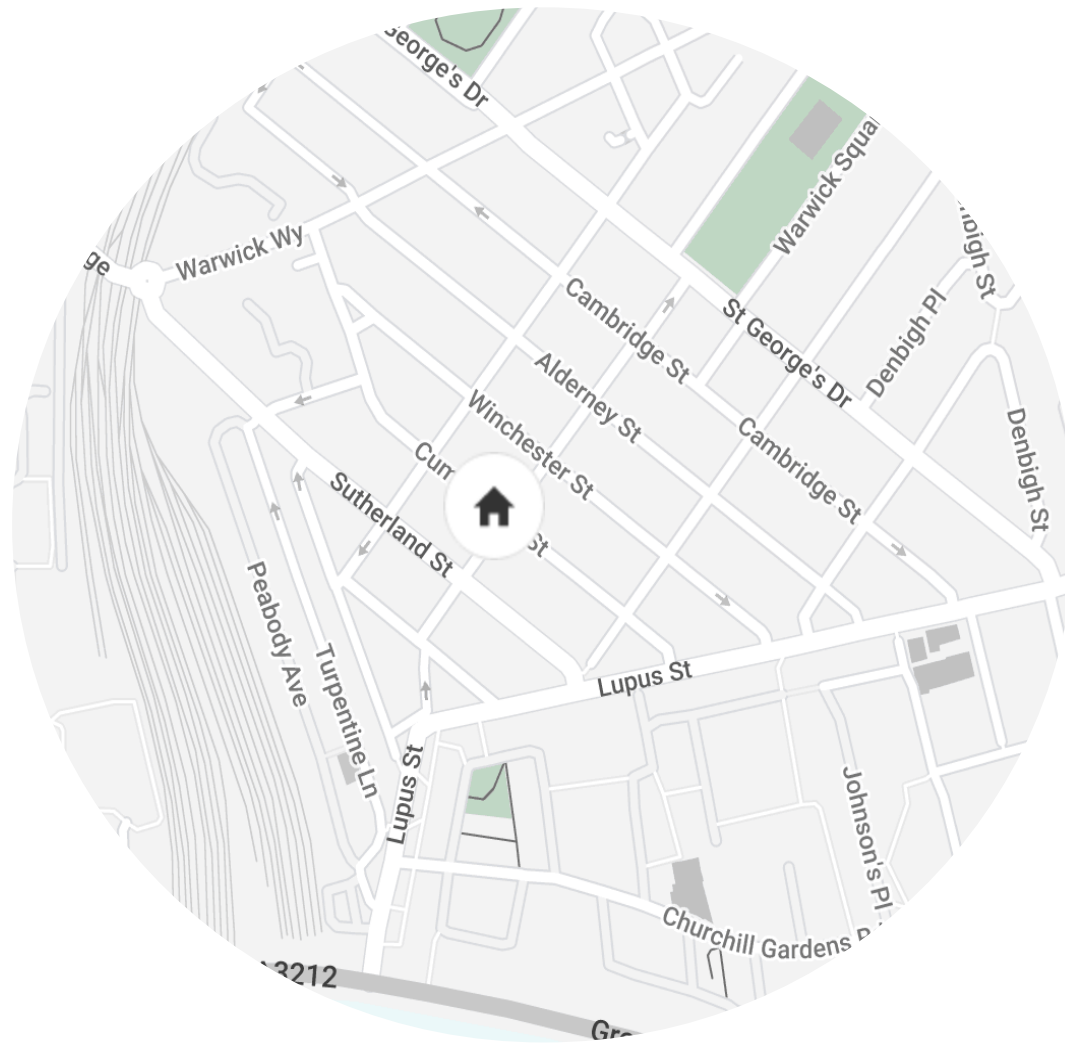
EPC: C

Council Tax Band H

Deposit: £36,000

Approx. Gross Internal Area = 3,234 sq ft / 300.4 sq m

Floor plans are for illustrative purposes only and not to scale. Compliant with RICS code of measuring practice. Furniture layouts are indicative only. This property may be furnished, part-furnished or unfurnished. Please refer to your agent for details.



Location

Pimlico is one of central London's most regal neighbourhoods. Caught between the Thames to the south and Westminster to the north, the area benefits from close proximity to world-class shops, restaurants and attractions. Head towards Sloane Square to pick up supplies from Daylesford Organic, dine on Italian food at Enoteca Turi or browse the area's fashion boutiques. For art and culture, choose between The Saatchi Gallery and the internationally renowned Tate Britain. Take a breather by the river or at Burton Court. To sample Pimlico's fine dining, make a beeline for Lorne or Michelin-starred Chinese restaurant A. Wong.

Pimlico (10 mins)

Victoria (11 mins)

Specialising in London
and Ibiza's design-led homes

Let's talk

020 7727 1717

lettings@domusnova.com

domusnova.com

The property particulars are a guide not statements. Descriptions, photographs, and plans are for guidance and should be checked by the prospective tenant. The Property is offered "subject to contract and references". No warranties, representations, or Tenancy is given by Domus Nova. Expenses incurred by a prospective tenant will not be reimbursed if the Landlord withdraws prior to the Tenancy Agreement being signed, dated and exchanged and cleared funds received. Furniture and other items shown in a property at viewing may belong to a current tenant. The prospective tenant should verify in writing which fixtures and fittings forms part of the Tenancy. Our full lettings disclaimer together with trading names and our [Privacy Policy](#) is shown on our website