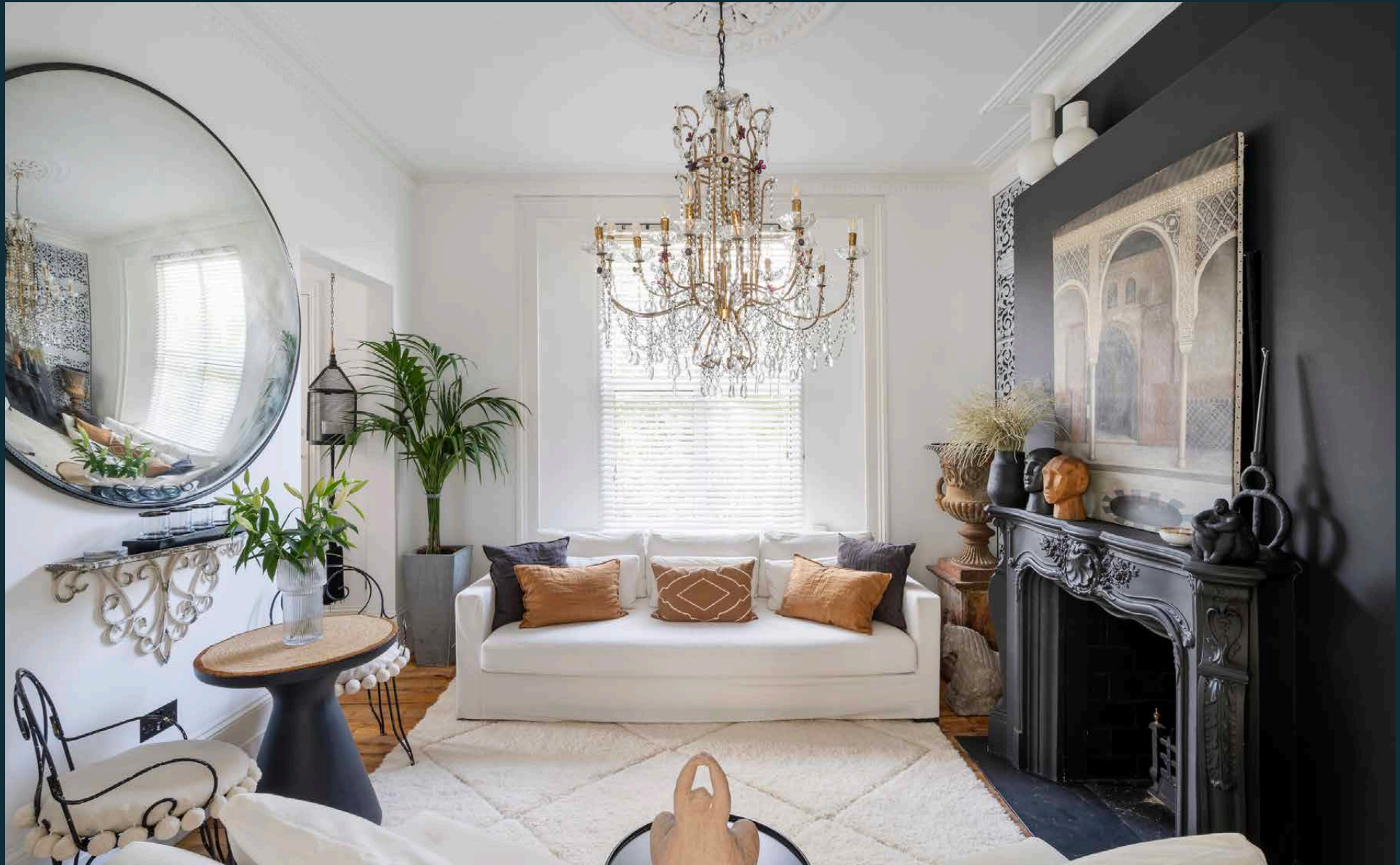


# DOMUS NOVA



Stowe Road W12  
£1,100 p/w (Short Let)



A neighbourhood that hums with character, Shepherd's Bush feels eclectic, vibrant and endlessly connected. Tucked among its tree-lined streets, Stowe Road is equal parts theatrical and thoughtful – a home designed to make a lasting impression.

A cheerful façade hints at the personality within, with a secret garden that's a peaceful pocket of sunshine. From here, stairs ascend to the raised ground floor, where original wooden floors set a warm tone through to the home's dramatic heart. A dark feature wall frames an ornate fireplace – fitted with a gas fire – while an extravagant chandelier sparkles overhead, casting playful shadows across Middle Eastern-inspired décor and a plush Pedro Peña sofa.







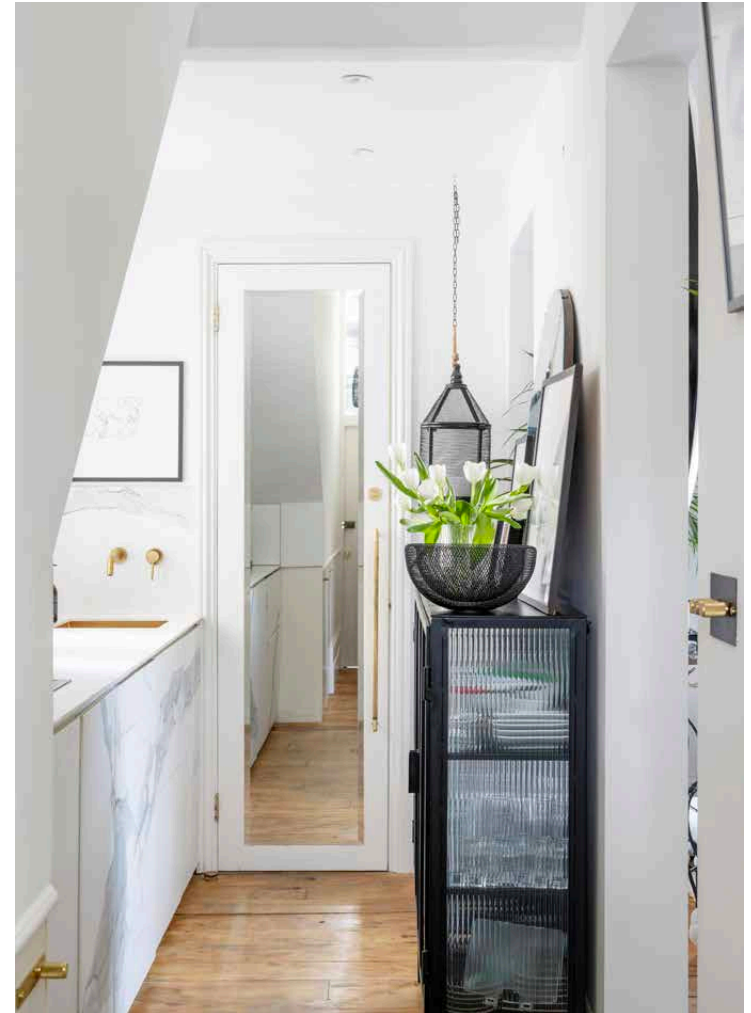


“ Overhead, an intricate ceiling rose hosts a chandelier – an opulent nod to the home’s Victorian past.













Partially concealed beyond a partition wall, the kitchen unfolds with equal flair. White and grey surfaces meet brushed brass fixtures, plus a Lusso sink that adds a refined feel. Concealed behind a mirrored door, the shower room continues a luxe aesthetic with underfloor heating, sleek tiling and a rainfall shower.

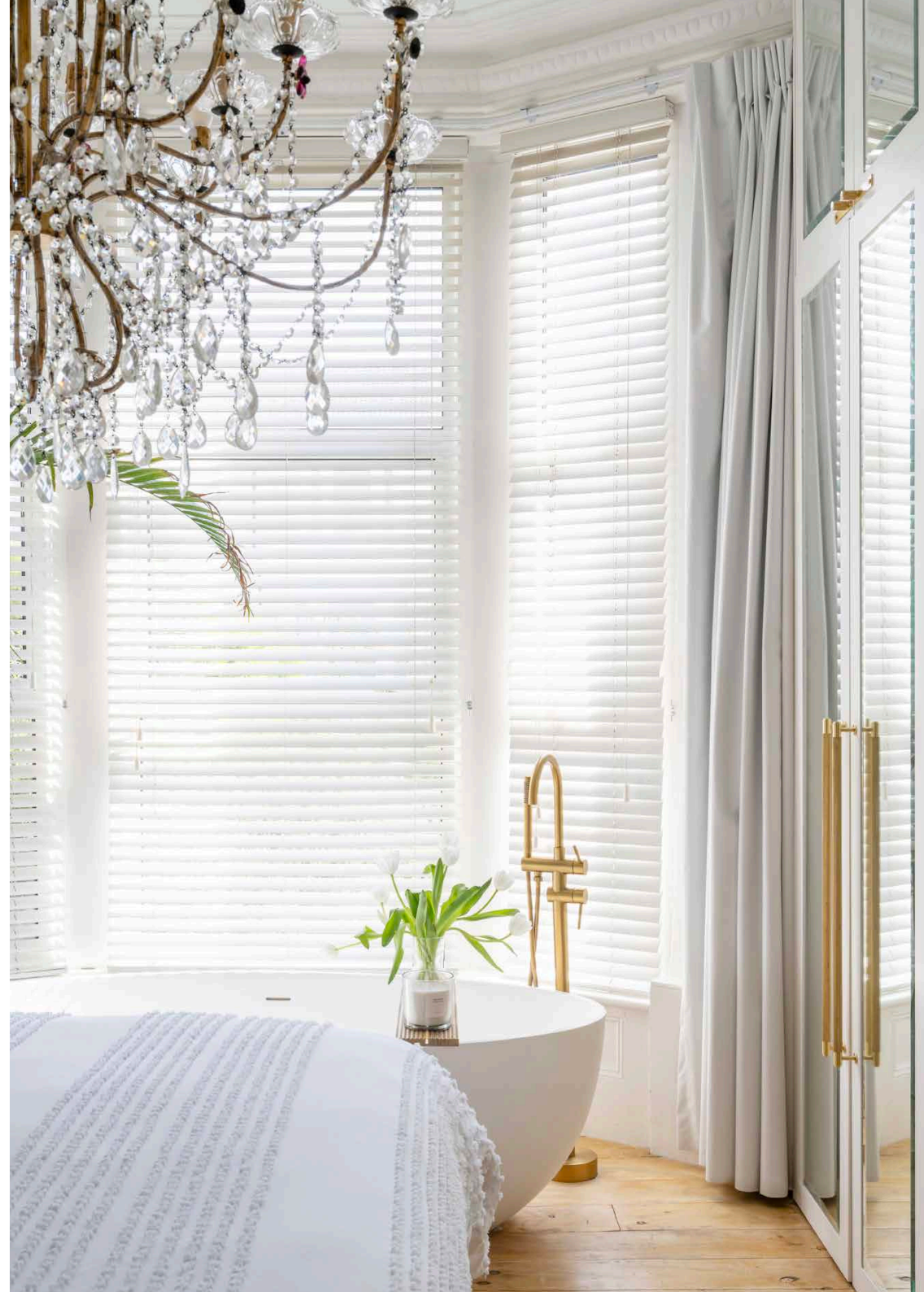
Positioned to the front of the home, the bedroom leans into tranquillity while maintaining the drama.

A large bay window draws in daylight, reflecting off mirrored wardrobes that stretch along one wall. Overhead, an intricate ceiling rose hosts a chandelier – an opulent nod to the home’s Victorian past. The pièce de résistance? A freestanding bathtub for ultimate indulgence.

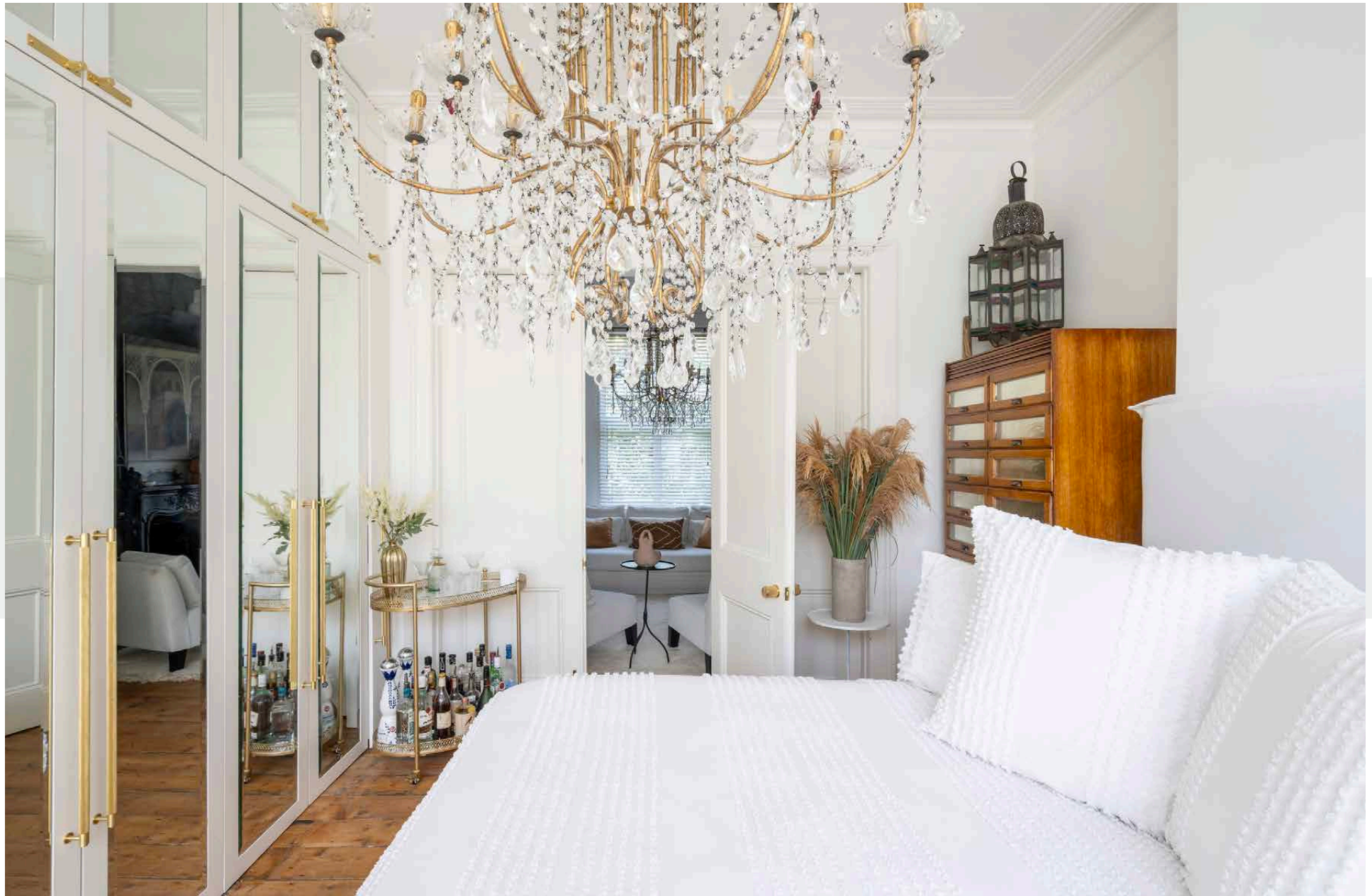




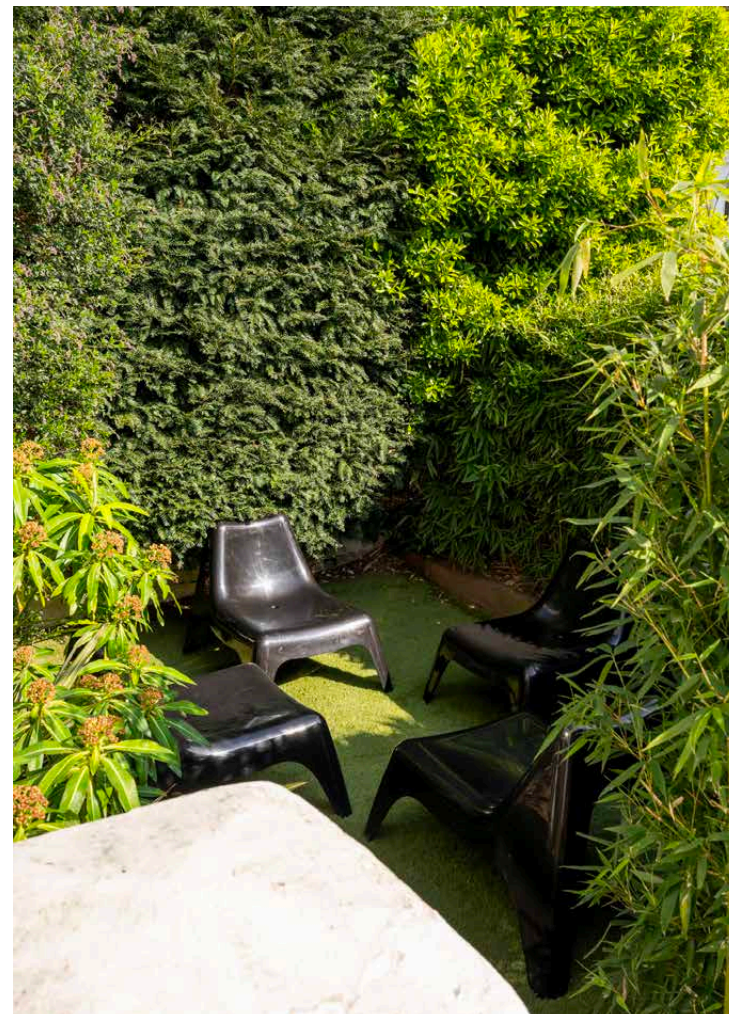




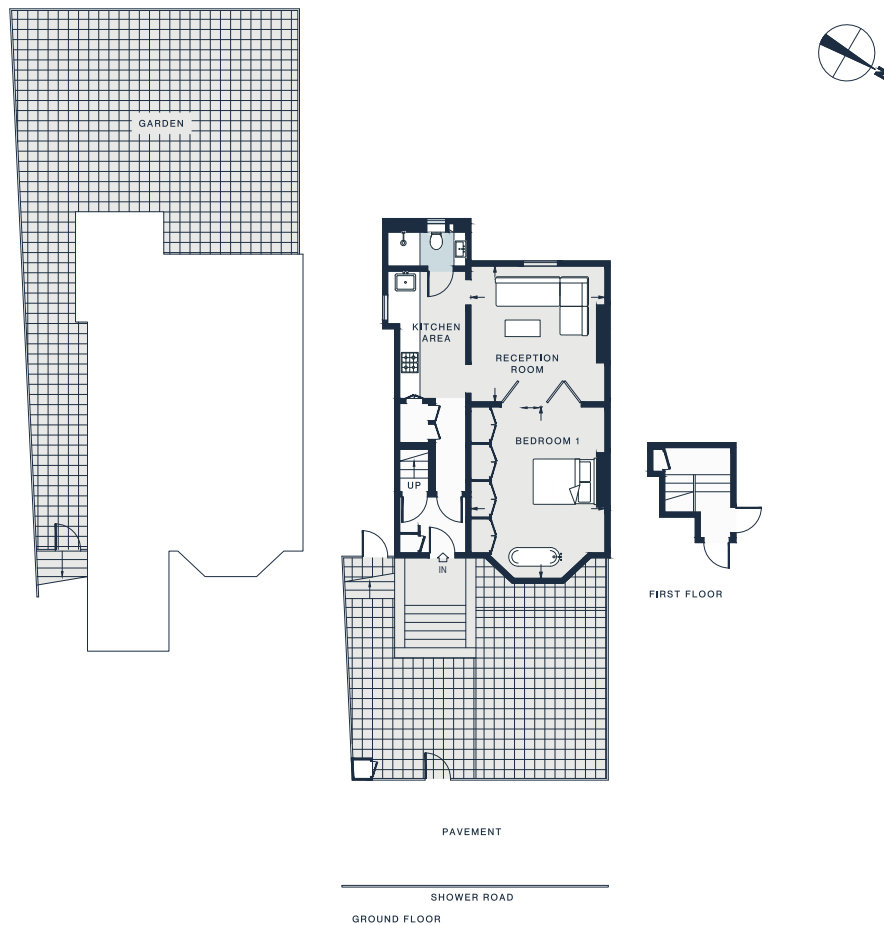












RECEPTION  
13'2 x 13'0 (4.0m x 3.9m)

BEDROOM  
16'7 x 13'0 (5.0m x 3.9m)

Approx. Gross Internal Area = 547 sq ft / 50.8 sq m

Floor plans are for illustrative purposes only and not to scale. Compliant with RICS code of measuring practice.  
Furniture layouts are indicative only. This property may be furnished, part-furnished or unfurnished. Please refer to your agent for details.  
Prepared for Domus Nova. Copyright © All Rights Reserved.

## Property Details

Open-plan dining and reception room  
Contemporary kitchen  
Principal bedroom with bespoke storage  
Shower room  
Private front garden  
London Borough of Hammersmith & Fulham

Approx. 574 sq ft / 50.8 sq m  
EPC = C  
Council Tax Band = D  
Deposit = £4,400



## Location

A residential street close to Shepherd Bush's best-loved hotspots. Spend afternoons browsing at Westfield Shopping Centre; find Louis Vuitton, Prada and Mulberry at The Village. Wormholt Park and Shepherd's Bush Green are both nearby. Right on the green, Shikumen at the Dorsett is your spot for Chinese fare. Stop by The Hoxton for a drink or make an evening of it at The O2 Shepherd's Bush. Just slightly further afield, White City House benefits from close proximity to renowned restaurants Waka, Bluebird and Michelin-starred Endo at The Rotunda.

Goldhawk Road - 8 mins (Circle, Hammersmith & City)



Specialising in London  
and Ibiza's design-led homes

Let's talk  
020 7727 1717  
lettings@domusnova.com  
domusnova.com

The property particulars are a guide not statements. Descriptions, photographs, and plans are for guidance and should be checked by the prospective tenant. The Property is offered "subject to contract and references". No warranties, representations, or Tenancy is given by Domus Nova. Expenses incurred by a prospective tenant will not be reimbursed if the Landlord withdraws prior to the Tenancy Agreement being signed, dated and exchanged and cleared funds received. Furniture and other items shown in a property at viewing may belong to a current tenant. The prospective tenant should verify in writing which fixtures and fittings forms part of the Tenancy. Our full lettings disclaimer together with trading names and our [Privacy Policy](#) is shown on our website