

# DOMUS NOVA



Stowe Road W12  
£1,795,000



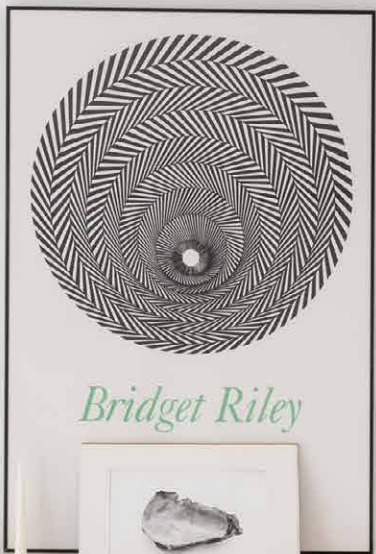
Set along a row of period façades in Shepherd's Bush, this four-bedroom townhouse for sale exudes a convivial character.

Contemporary yet classic, this striking four-bedroom home celebrates its period framework with timeless interiors. Ascending past a column-fronted stucco façade, an elegant reception room makes for a fitting welcome to Stowe Road.

Initiating an interplay of old and new that unfurls throughout the home, period features feel in harmony with modern design. A space to press pause, natural light floods in through a tall bay window. Vaunting impressive heritage proportions, this calming setting is complete with a fireplace flanked by floor-to-ceiling shelving.

Descending to the garden level, a whitewashed canvas is the backdrop for a sprawling open-plan living space. An abundance of light comes courtesy of dual-aspect fenestration, bringing an animated air to lounging and dining. Arranged to the rear of the room, a sage-green kitchen strikes a considered balance between traditional and contemporary. From this level, glass doors lead out to an enchanting private garden, where a decked terrace is bordered by blossoming greenery.





*Bridget Riley*











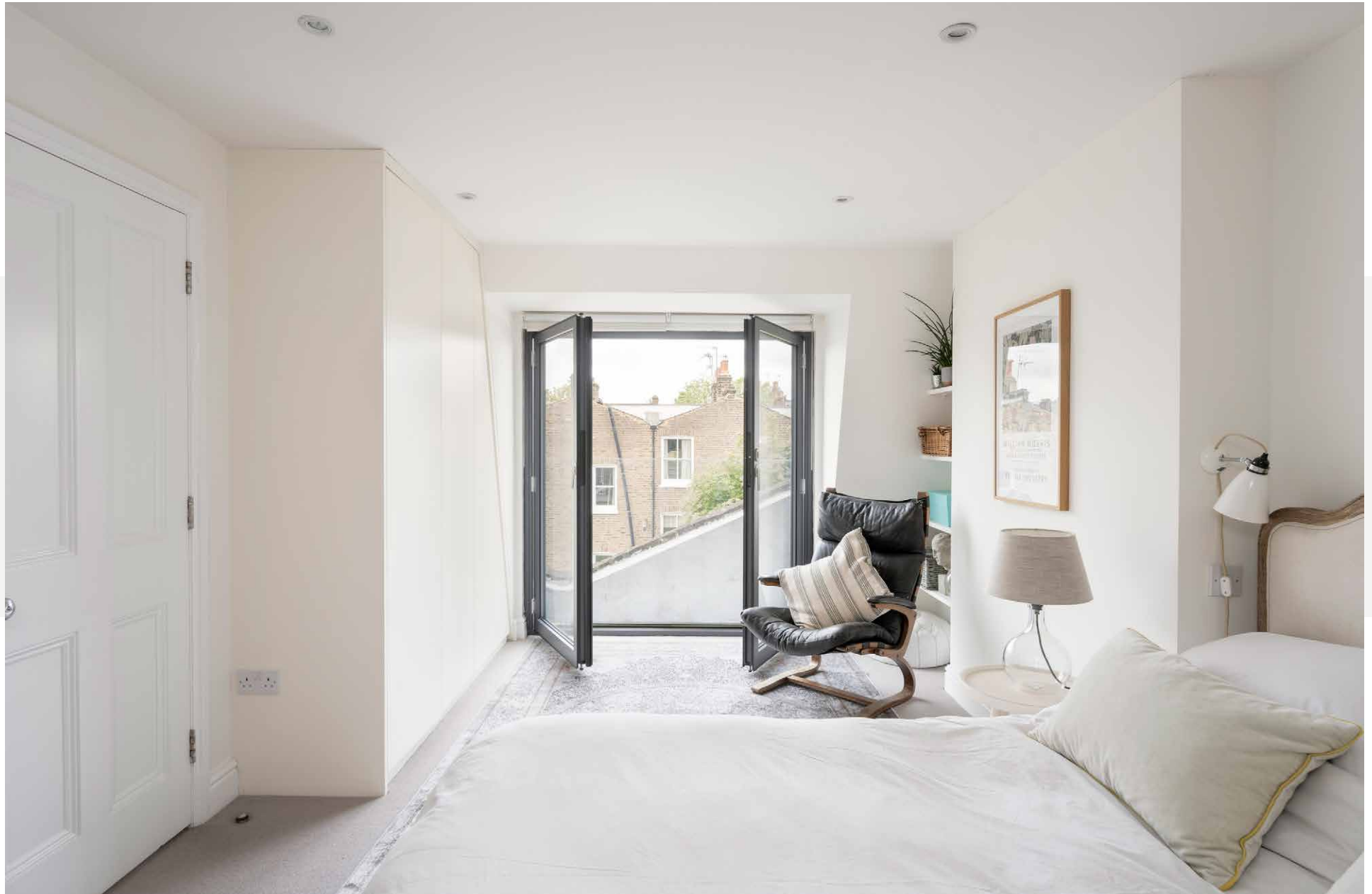


Encompassing the entire top floor, the spacious principal bedroom suite is dressed in soothing neutral hues. An en suite shower room is finished in monochrome tones, while double doors open to a Juliet balcony for a breath of fresh air. Three further bedrooms are arranged across the ground and first floor, each considered and calming in muted blue tones. Two sophisticated family bathrooms – each with a bathtub – serve these rooms.





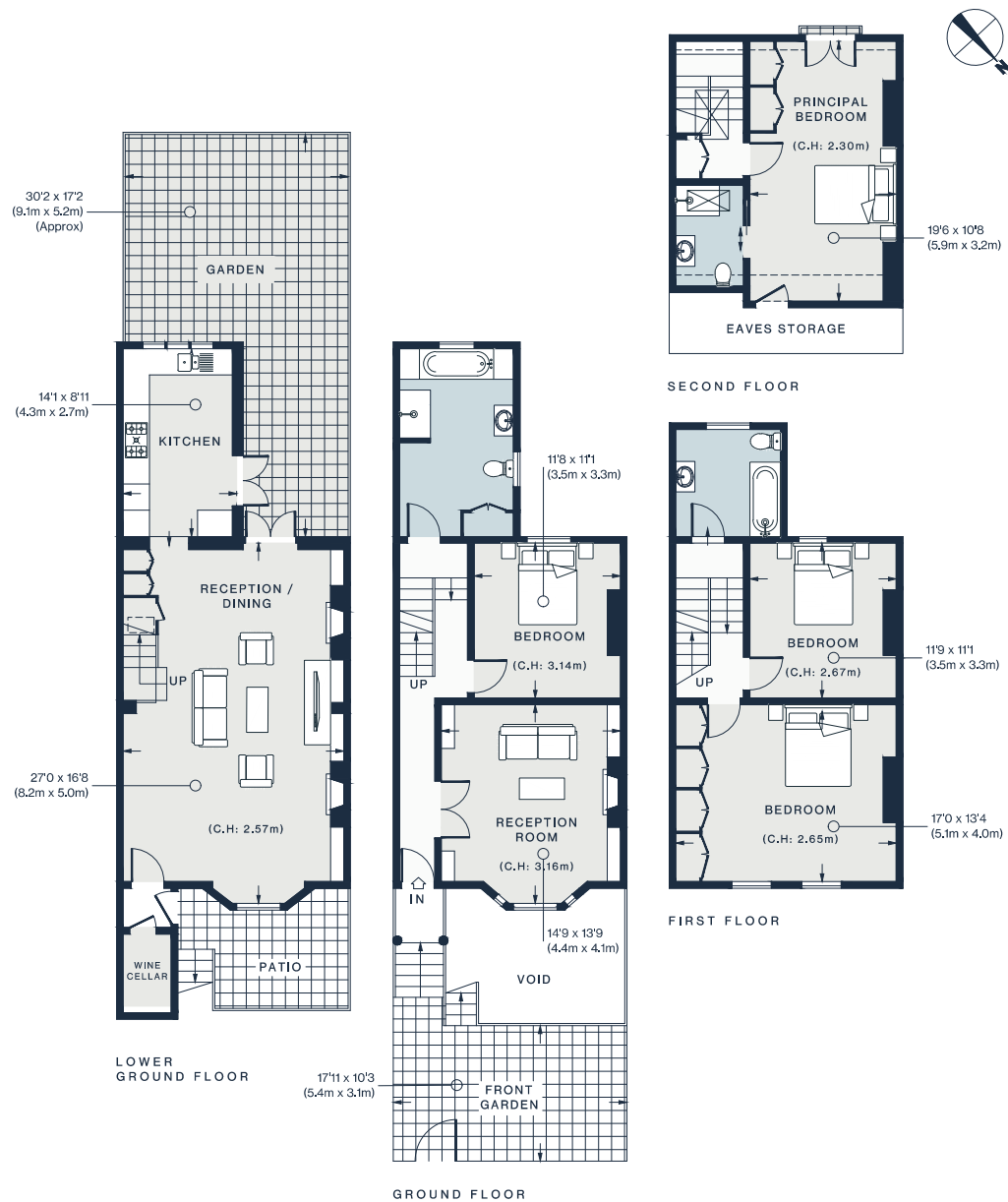












Approx. Gross Internal Area = 2,056 sq ft / 190.9 sq m

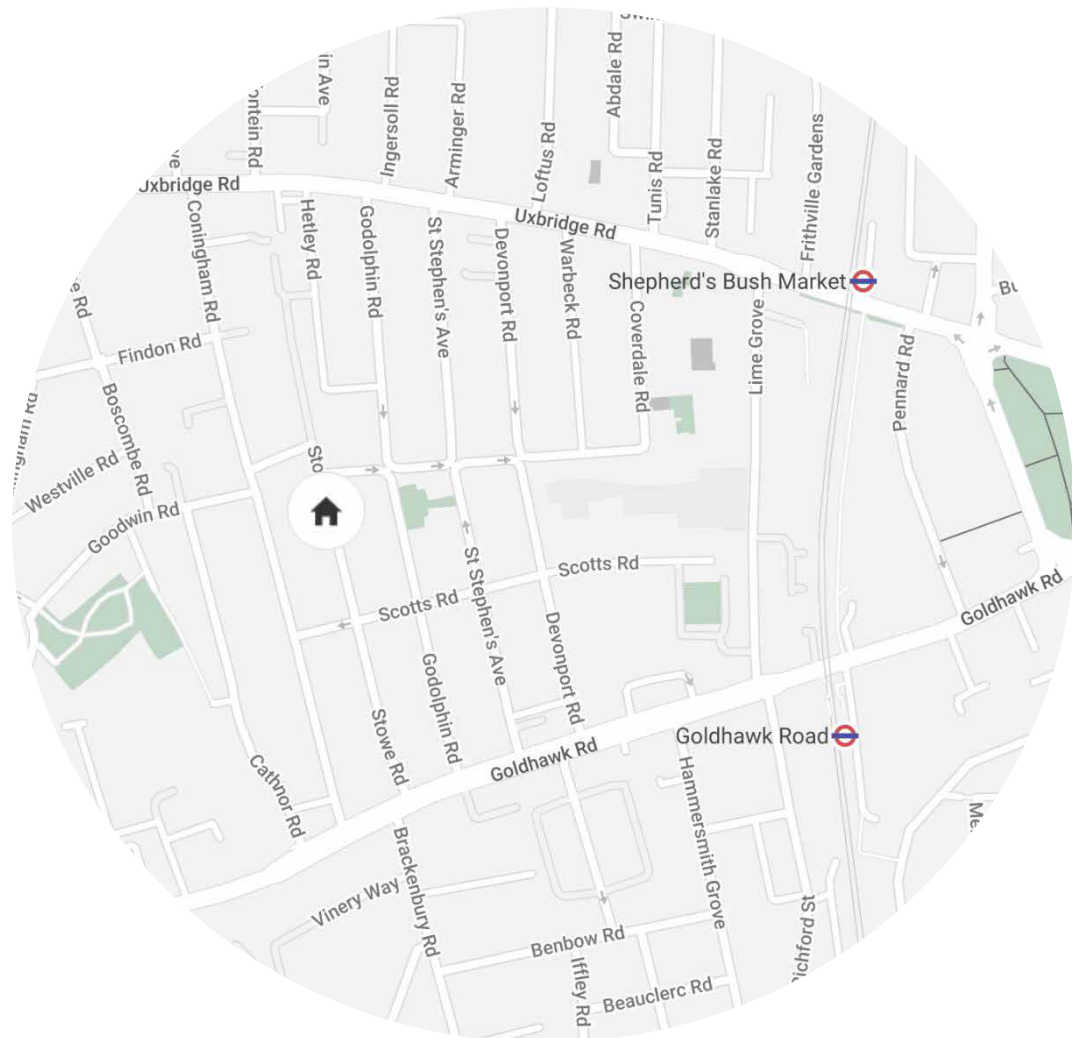
Floor plans are for illustrative purposes only and not to scale. Compliant with RICS code of measuring practice.

## Property Details

- Open-plan dining and reception room
- Contemporary kitchen
- Additional reception room
- Principal bedroom suite
- Three further bedrooms
- Two family bathrooms
- Wine cellar
- Private garden
- London Borough of Hammersmith & Fulham

Approx 2,056 sq ft / 190.9 sq m  
 EPC=D  
 Tenure: Freehold  
 Council Tax Band: G





## Location

A quiet street close to Shepherd's Bush's best-loved hotspots. Start your day with a laid-back breakfast at Proud Mary's or Wild Thyme, both just a short walk away. Head to Westfield Shopping Centre to find Louis Vuitton, Prada and Mulberry at The Village. For green space, Shepherd's Bush Green and Wormholt Park are both nearby. Alternatively, stroll along the river into Hammersmith. Stop by White City House and nearby restaurants Waka, Bluebird or Michelin-starred Endo at the Rotunda.

Goldhawk Road (7 mins)

Specialising in London  
and Ibiza's design-led homes

Let's talk  
020 7221 7817  
sales@domusnova.com  
domusnova.com

The particulars above are a guide, not an offer or contract. Descriptions, photographs and plans are not statements or representations of fact. Measurements are approximate and not to scale. Prospective purchasers must verify the accuracy of the information within the particulars. Domus Nova does not give any representations or warranties; nor represent the Seller legally. Domus Nova has no liability, for any costs, losses or expenses incurred by the Seller or a prospective buyer relating to the sales and buying transaction.

Our Sales Disclaimer, trading names and privacy policy on how your data is processed and used is found in full on our website in our [Privacy Statement](#).

© Domus Nova 2024. All rights reserved.