

DOMUS NOVA



Stafford Terrace W8
£3,250 pw - Short let



Exuding tranquillity inside and out, this three-bedroom Kensington home for rent pairs calming tones and Victorian character.

Set between the leafy lawns of Holland Park and lively Kensington High Street, this lateral apartment is positioned to enjoy the best of both worlds. Arranged across the first floor, interiors here are as characterful as its pristine stucco façade suggests.

Through an airy entrance hall, soaring 3.4 metre-high ceilings pair with detailed architrave to form a regal social setting. To one side of the room, an ornate fireplace serves as an elegant centrepiece for the lounge. Soft light filters through a tall sash window, casting calming rays across cool cream carpet and two linen sofas. To the other side, the kitchen and dining area's understated palette allows period features to shine through.

Light wooden flooring subtly distinguishes the kitchen, fashioned from sleek cabinetry and marble countertops. An intricate chandelier crowns the dining space opposite, backdropped by a grand bay window with built-in seating.











Calming hues extend into the principal bedroom suite, where pared-back design produces a haven for relaxation. A continuation of the home's exceptional attention to detail, integrated wardrobes and floating bedside tables complete the room's refined feel. From here, ascend steps to an indulgent en suite bathroom, fitted with a rainfall shower and free-standing roll-top bathtub.

Sat opposite, a guest bedroom wears soft sandy tones and benefits from a large bay window, while a final third bedroom is an ideal space for rest or study. Both bedrooms are served by a sleek spot-lit shower room.

















HVB: ELNAZ NAMAKI

BUILD • DESIGN • LONDON

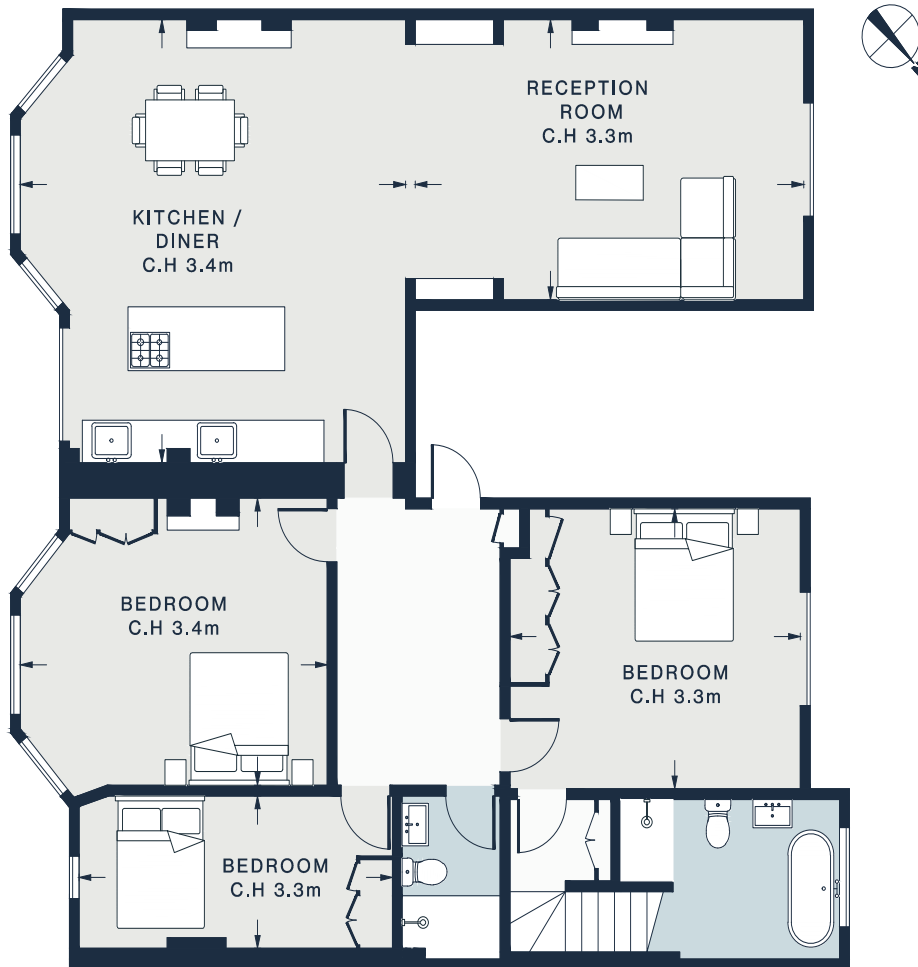
www.elnaznamaki.com
info@elnaznamaki.com

elnaznamaki_studio

17



CI



FIRST FLOOR

RECEPTION ROOM
19'7 x 13'0 (5.9m x 3.9m)

KITCHEN / DINER
20'6 x 18'7 (6.2m x 5.6m)

BEDROOM
15'5 x 13'3 (4.7m x 4.0m)

BEDROOM
14'8 x 13'0 (4.4m x 3.9m)

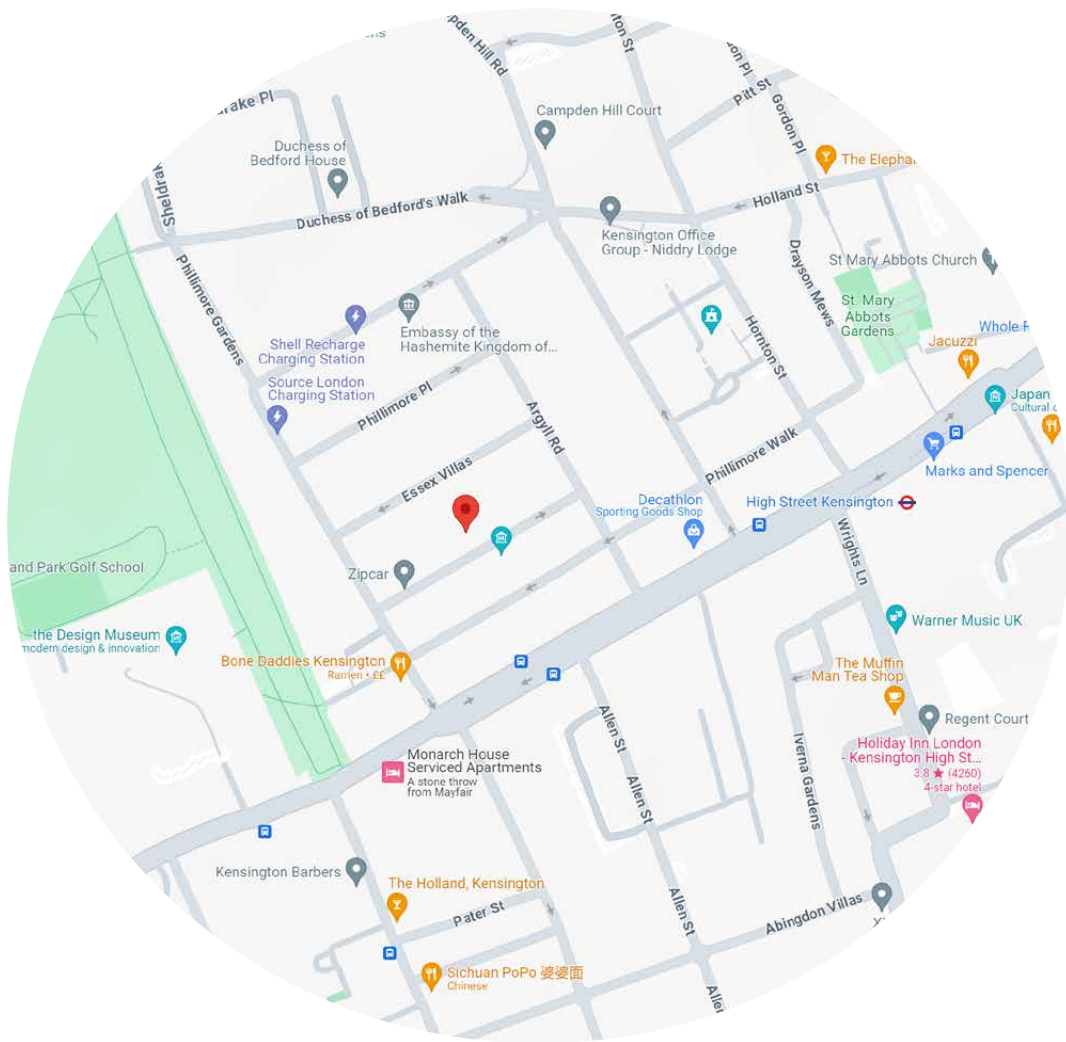
BEDROOM
15'6 x 7'0 (4.1m x 2.1m)

Approx. Gross Internal Area = 1,434 sq ft / 133.2 sq m

Property Details

- Open-plan kitchen, dining and reception room
- Principal bedroom suite
- Two guest bedrooms
- Shower room
- Royal Borough of Kensington & Chelsea

Approx 1,434 sq ft / 133 sq m
Council Tax Band - G
EPC - CW
Deposit Payable - £13,000



Location

Sandwiched between peaceful Holland Park and the lively thoroughfares of Kensington High Street, Stafford Terrace enjoys both the calm and the vibrancy of its neighbourhood. Start the day with breakfast from Café Phillies, then a stroll around Holland Park. Wander through the Design Museum, then stop at Belvedere for a taste of Italy with a rich Tuscan-style setting. Spend your afternoon browsing the endless offerings of Kensington High Street and end the day with dinner at Dishoom, Kitchen W8, or Min Jiang. On Saturdays, stretch the legs further with a stroll to Portobello Road.

High Street Kensington - 3 mins

Specialising in London
and Ibiza's design-led homes

Let's talk
020 7727 1717
lettings@domusnova.com
domusnova.com

The property particulars are a guide not statements. Descriptions, photographs, and plans are for guidance and should be checked by the prospective tenant. The Property is offered "subject to contract and references". No warranties, representations, or Tenancy is given by Domus Nova. Expenses incurred by a prospective tenant will not be reimbursed if the Landlord withdraws prior to the Tenancy Agreement being signed, dated and exchanged and cleared funds received. Furniture and other items shown in a property at viewing may belong to a current tenant. The prospective tenant should verify in writing which fixtures and fittings forms part of the Tenancy. Our full lettings disclaimer together with trading names and our [Privacy Policy](#) is shown on our website