

DOMUS NOVA



St Stephens Mews W2
£1,895,000



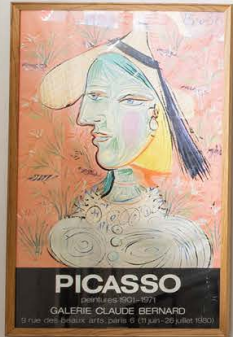
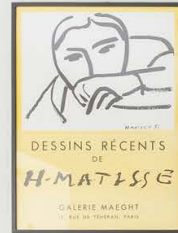
Design-led living with a twist. This two-bedroom mews home for sale embraces a bold approach to colour.

Down a cobbled mews lane, a striking black exterior sits boldly between pastel-toned neighbours. Beyond its charcoal façade, lively tones lend an uplifting ambiance to the home's three floors.

Inside, a vibrant yellow door sets the scene, opening to a generous open-plan kitchen, dining and reception room. A canary coloured beam playfully distinguishes the kitchen, considerably configured in an L-shape to enhance the room's sweeping spacious feel. Sleek beige cabinetry and clean lines create a refined impression, while glistening white subway tiles bring a textural element.

Opposite, a trio of sash windows cast light across the dining and reception area, complete with bespoke alcoves for displaying books or art. Nestled into the wall next to the kitchen, shelving sits above a warm wooden worktop, creating a cosy space to work or study.









Across the first floor – a pared-back palette creates calm in the guest bedroom suite. Sleek storage is dispersed through the space, illuminated by soothing natural light. Patterned flooring brings an uplifting feel to the en suite bathroom, fitted with a rainfall shower and bathtub.

Sunlit steps guide the way to the second floor, where an echo of the home's striking exterior plays out in the principal bedroom suite. An interplay of charcoal tones and channels of light, sash windows and skylights bring a glossy sheen to black walls and floorboards. A wall of fitted storage melds seamlessly into the room, while a pristine white ceiling offers an eye-catching counter to the moody hue. White tiles wrap around the en suite shower room, complete with a bright yellow vanity.

From the third floor, bright stairs lead to a generous decked terrace spanning the width of the home. Integrated bench seating provides a peaceful spot to admire views across Notting Hill and beyond.







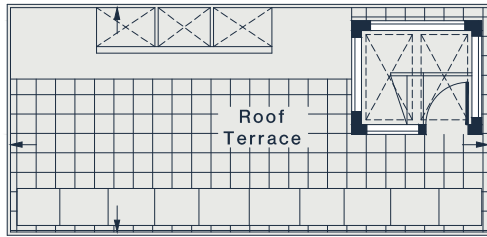




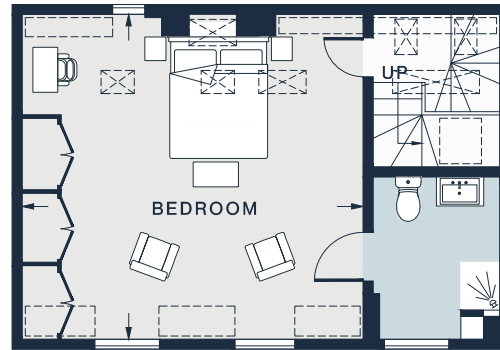




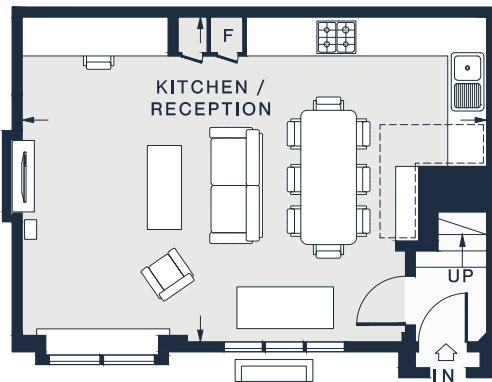




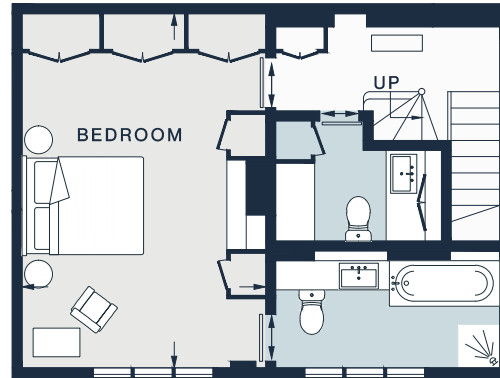
THIRD FLOOR



SECOND FLOOR



GROUND FLOOR



FIRST FLOOR

KITCHEN / RECEPTION

23'5 x 16'4 (7.2m x 5.0m)

ROOF TERRACE

23'11 x 11'4 (7.4m x 3.4m)

BEDROOM

17'5 x 16'1 (5.3m x 5.0m)

BEDROOM

17'9 x 12'3 (5.5m x 3.7m)

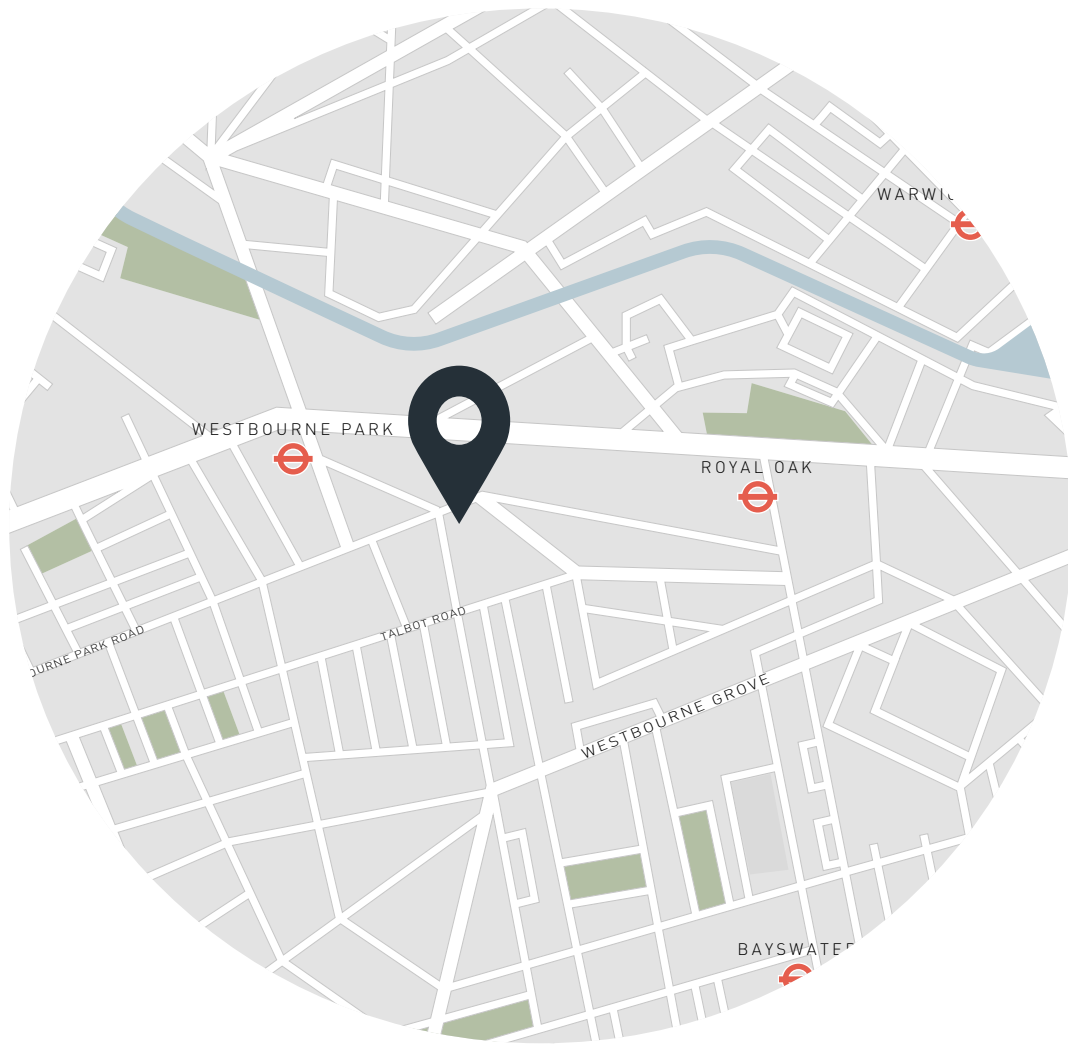
Approx. Gross Internal Area = 1,242 sq ft / 115.4 sq m

Floor plans are for illustrative purposes only and not to scale. Compliant with RICS code of measuring practice.

Property Details

- Open-plan kitchen, dining and reception room
- Principal bedroom suite
- Guest bedroom suite
- WC / Utility room
- Roof terrace
- City of Westminster

- Approx. 1,242 sq ft / 115 sq m
- EPC - C
- Council tax - C
- Freehold



Location

A quiet enclave in residential Bayswater, St Stephens Mews enjoys a sense of calm while maintaining close proximity to the hotspots of Notting Hill. Head to the lawns of Holland Park or Kensington Gardens for a leisurely stroll, grabbing a coffee from Beam en route. Refined eateries are close to home, with Cépages Wine Bistro, Farmgirl and Granger and Co. in walking distance. Famed for its oysters, coveted local pub The Cow is a stone's throw from your door. For an evening's entertainment, head to The Electric Cinema.

Westbourne Park – 7 mins (Circle, Hammersmith & City)

Specialising in London
and Ibiza's design-led homes

Let's talk
020 7221 7817
sales@domusnova.com
domusnova.com

The particulars above are a guide, not an offer or contract. Descriptions, photographs and plans are not statements or representations of fact. Measurements are approximate and not to scale. Prospective purchasers must verify the accuracy of the information within the particulars. Domus Nova does not give any representations or warranties, nor represent the Seller legally. Domus Nova has no liability, for any costs, losses or expenses incurred by the Seller or a prospective buyer relating to the sales and buying transaction.

Our Sales Disclaimer, trading names and privacy policy on how your data is processed and used is found in full on our website in our [Privacy Statement](#).

© Domus Nova 2023. All rights reserved.