

DOMUS NOVA

St Stephens Gardens

Bayswater W2

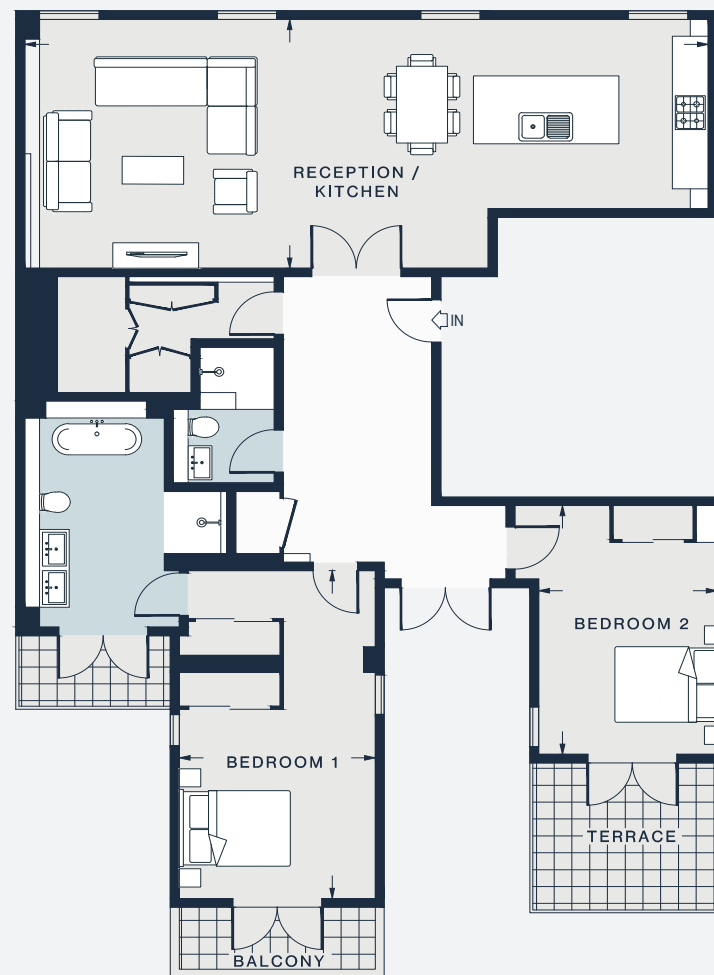
APPROXIMATE GROSS INTERNAL AREA

1,292 sq ft / 120 sq m

020 7727 1717

domusnova.com

LONDON | IBIZA



THIRD FLOOR

RECEPTION / KITCHEN

37'8 x 14'6 (11.5m x 4.4m)

BEDROOM 1

19'2 x 10'11 (5.8m x 3.3m)

BEDROOM 2

14'7 x 9'9 (4.4m x 3.0m)

Approx. Gross Internal Area = 1,292 sq ft / 120 sq m

Floor plans are for illustrative purposes only and not to scale. Compliant with RICS code of measuring practice. Furniture layouts are indicative only. This property may be furnished, part-furnished or unfurnished. Please refer to your agent for details.