

# DOMUS NOVA

## St Stephens Gardens

Bayswater W2

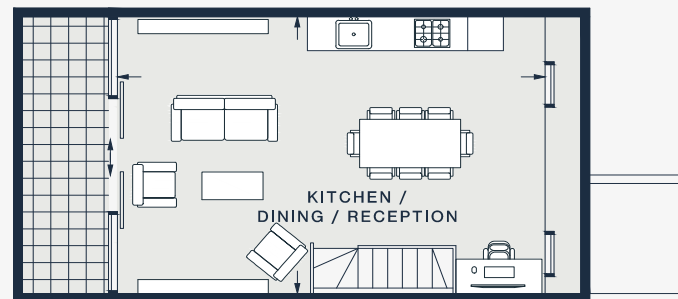
APPROXIMATE GROSS INTERNAL AREA

995 sq ft / 92.5 sq m

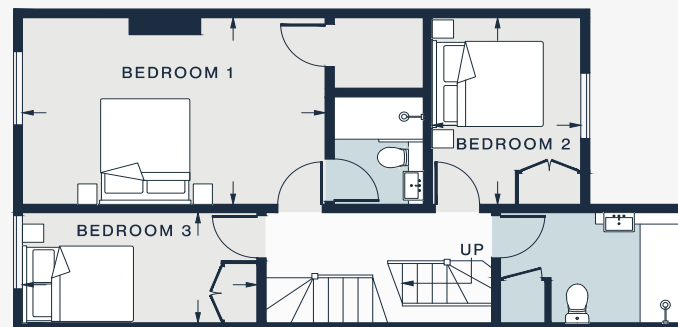
020 7727 1717

domusnova.com

LONDON | IBIZA



FOURTH FLOOR



THIRD FLOOR

KITCHEN / DINING / RECEPTION

25'7 x 16'1 (7.8m x 4.9m)

BEDROOM 2

10'10 x 8'2 (3.3m x 2.5m)

BEDROOM 1

16'10 x 10'10 (5.1m x 3.3m)

BEDROOM 3

13'0 x 6'6 (3.9m x 1.9m)

Approx. Gross Internal Area = 995 sq ft / 92.5 sq m

Floor plans are for illustrative purposes only and not to scale. Compliant with RICS code of measuring practice. Furniture layouts are indicative only. This property may be furnished, part-furnished or unfurnished. Please refer to your agent for details.