

DOMUS NOVA

St Stephens Gardens

Bayswater W2

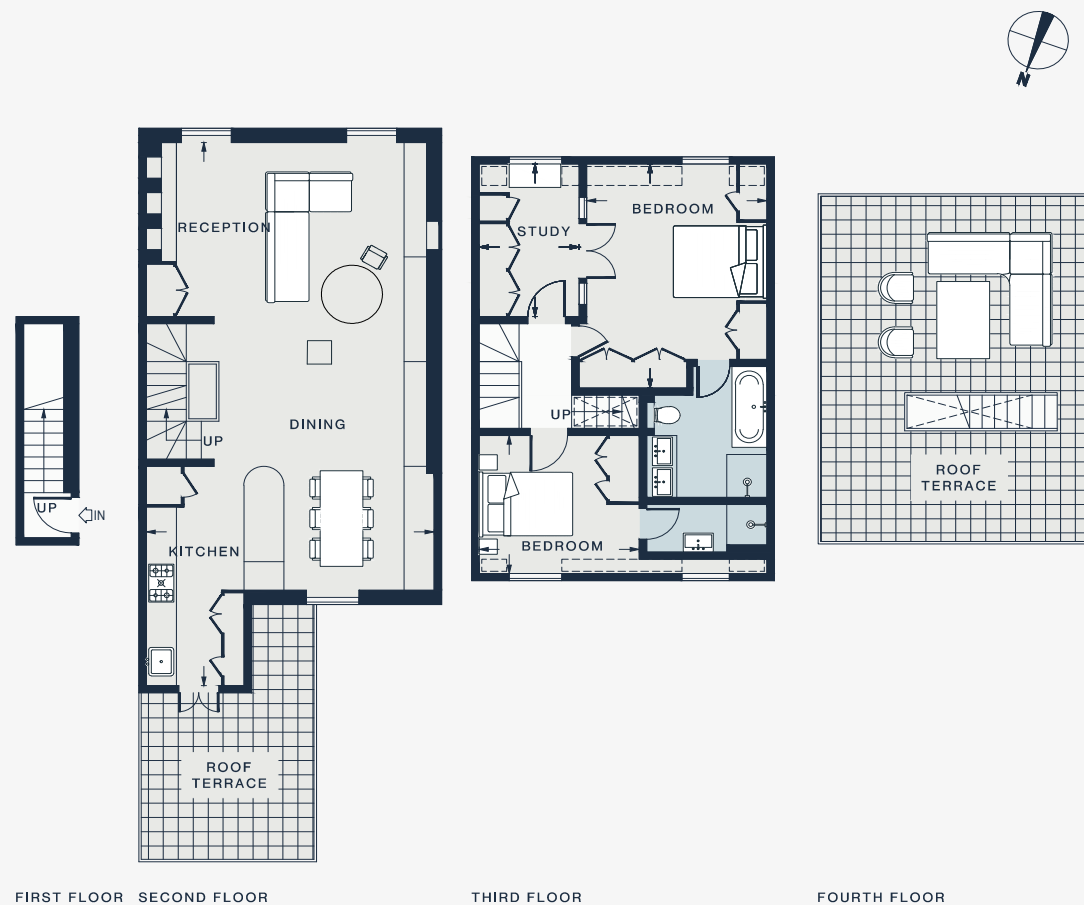
APPROXIMATE GROSS INTERNAL AREA

1,207 sq ft / 1121.1 sq m

020 7727 1717

domusnova.com

LONDON | IBIZA



RECEPTION / DINING / KITCHEN

37'5 x 18'8 (11.3m x 5.7m)

BEDROOM

15'4 x 11'8 (4.7m x 3.6m)

BEDROOM

10'6 x 9'7 (3.2m x 2.9m)

STUDY

10'5 x 6'5 (3.2m x 2.0m)

Approx. Gross Internal Area = 1,207 sq ft / 1121.1 sq m

Floor plans are for illustrative purposes only and not to scale. Compliant with RICS code of measuring practice.