

DOMUS NOVA

St Quintins Avenue

North Kensington W10

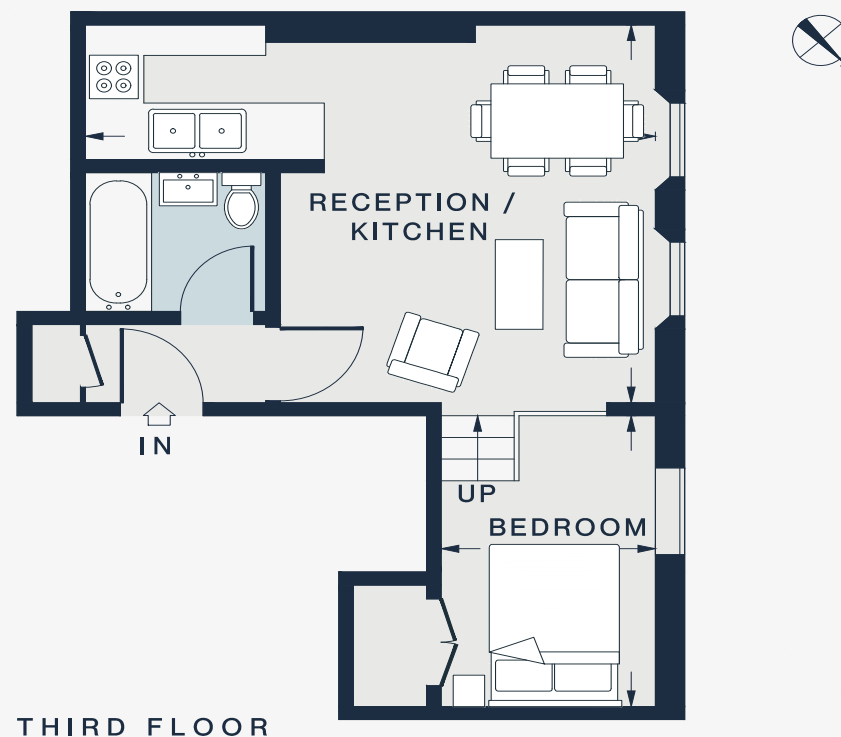
APPROXIMATE GROSS INTERNAL AREA

379 sq ft / 35.2 sq m

020 7727 1717

domusnova.com

LONDON | IBIZA



RECEPTION / KITCHEN
19'2" x 14'4" (5.8m x 4.3m)

BEDROOM
11'0" x 7'3" (3.3m x 2.2m)

Approx. Gross Internal Area = 379 sq ft / 35.2 sq m

Floor plans are for illustrative purposes only and not to scale. Compliant with RICS code of measuring practice. Furniture layouts are indicative only. This property may be furnished, part-furnished or unfurnished. Please refer to your agent for details.