

DOMUS NOVA



St Quintin Avenue W10 – £2,500,000

In partnership with **BARNES**
INTERNATIONAL REALTY



In the heart of North Kensington, a Victorian townhouse conceals this design-led home. Full to the brim with thoughtful detail, design by Hanson Architects and Julie Wallinger Interiors provides a contemporary backdrop for everyday life.

An inverted layout places social spaces upstairs, where the home's interior architecture invites light to flow seamlessly throughout. A spacious double reception room spans the depth of the home, with bifold doors allowing rooms to flex between intimate retreats and one expansive space. At the front, a sitting room is suffused with natural light. Olive-green walls and a Murano chandelier curate a mood that's playful and refined; set the scene with the home's bespoke lighting and Sonos Sound system. Light the functioning Charnwood burner for a warming centrepiece in cooler months.

The dining room continues the theme, with a Marble fireplace of its own and a wall-mounted wine rack. From here, step into the eat-in kitchen crafted by Such Design. Sleek dark cabinets contrast white tiling and Fired Earth floors, all tied together with state-of-the-art appliances and underfloor heating. Breakfasts here come with inspiring surroundings, courtesy of the steel and glass conservatory that opens to a terrace.











“ An inverted layout places social spaces upstairs, where the home’s interior architecture invites light to flow seamlessly throughout



Downstairs, the principal bedroom evokes an indulgent feel. An expansive space, it features a grand dressing room to one side and a sitting room to the other. Glazing offers a seamless connection to the outdoors, leading directly to the garden. The en suite bathroom is equally considered, with pale green and grey tiles wrapping around a sky-lit walk-in shower and dual vanity. A second bedroom is served by a family bathroom, an indulgent affair featuring a roll-top bathtub and separate shower.

Outdoors, a landscaped patio garden by Rosie Bines and Mark Wallinger Gardens is a quiet escape. Birch and Magnolia trees provide colour and shade, while a bespoke outdoor studio offers a versatile space for work or creativity.















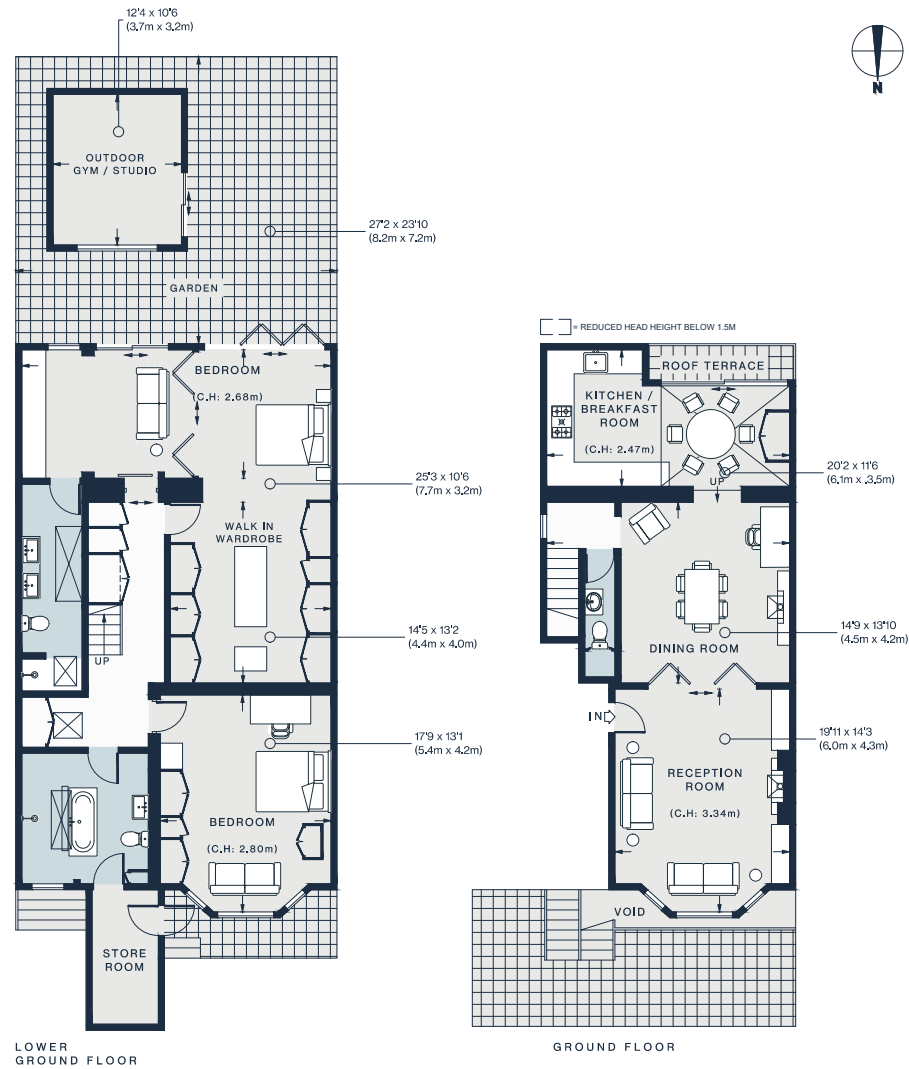






Resident
permit
holders
only
Mon-Fri
8.30 am - 6.30 pm
Saturday
8.30 am - 1.30 pm

69 ST. QUINTINS
AVENUE W10



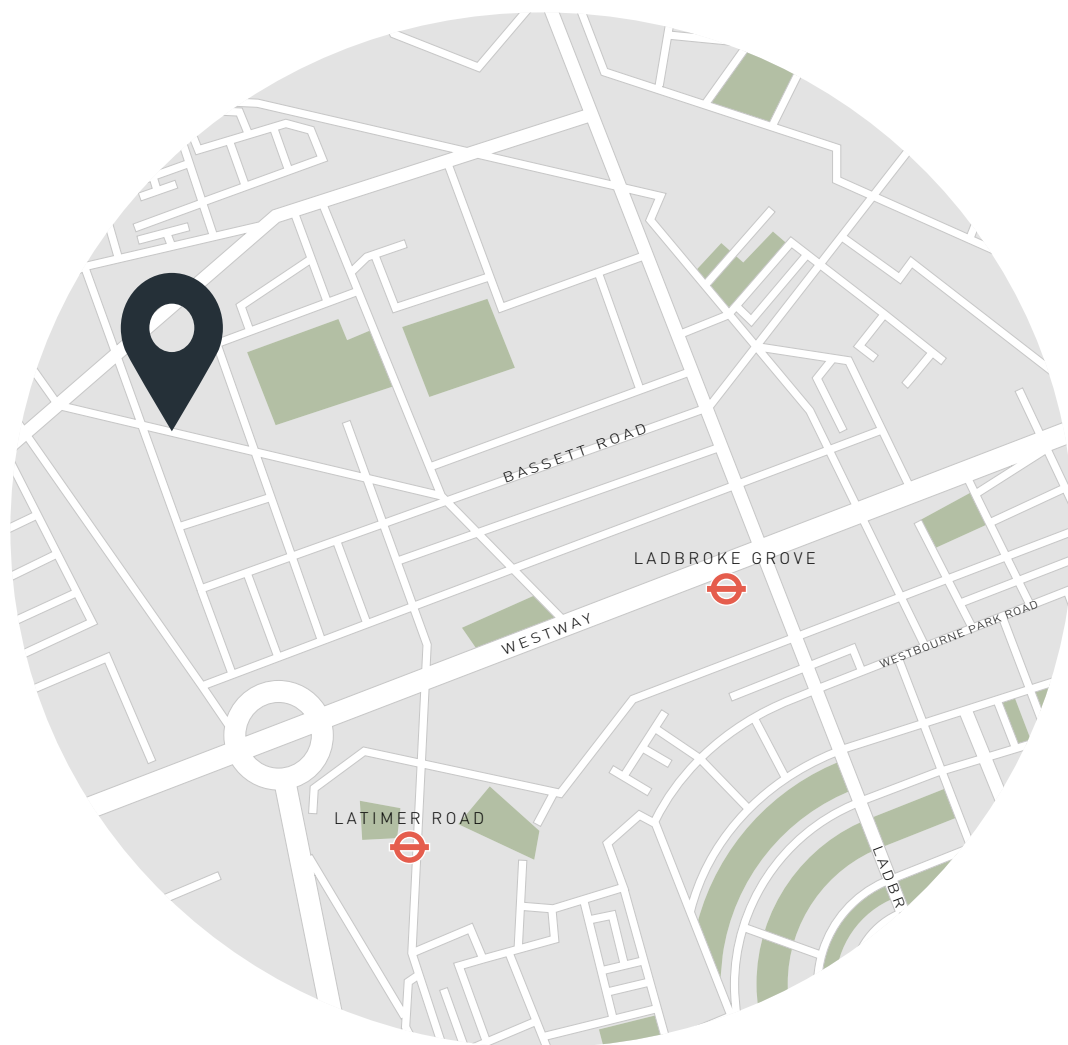
Approx. Gross Internal Area = 1927 sq ft / 179 sq m
 Outdoor Gym / Studio = 129 sq ft / 12 sq m
 Total = 2056 sq ft / 191 sq m

Floor plans are for illustrative purposes only and not to scale. Compliant with RICS code of measuring practice.

Property Details

Design by Hanson Architects and Julie Wallinger Interiors
 Spacious double reception room
 Bespoke eat-in kitchen
 Principal bedroom suite with dressing room and sitting room
 Generous guest bedroom
 Versatile garden studio
 Family bathroom
 Cloakroom
 Terrace
 Private garden

Approx. 2, 056 sq ft / 191 sq m
 EPC= C
 Tenure: Share of Freehold
 Lease Length: circa 991 years
 Council Tax Band: G



Location

Within walking distance of both Golborne Road and Portobello Road, laid-back North Kensington is a treasure trove of independent businesses. Shop for supplies at Golborne Deli & Wine Store, pick up pastries to go from Lisboa or Layla Bakery, or book dinner at Straker's. Spend weekends browsing the neighbourhood's renowned antique and vintage stalls. For designer shopping, The Village at Westfield is close by – stop for a drink at the White City branch of Soho House.

Latimer Road – 12 mins (Circle, Hammersmith & City)

Who — we are



Forward-thinkers in property, design and culture, we're an estate agency that hits refresh.

Domus Nova was born out of a desire to do things differently; to break the traditional agency model and focus on design-led homes in London and Ibiza, all while delivering the highest levels of personal service.

Our story starts in the nineties when we founded Notting Hill's first boutique agency – and we continue to open the doors to the most remarkable spaces, revealing them to our like-minded community.

We want to help you live better – and believe considered design can do that. That's why we remain committed to building on our legacy, in collaboration with BARNES International, an established agency with a market-leading presence in 22 countries.

Uniting our local insight and curated portfolio with BARNES International's expansive reach, we can facilitate the best opportunities in not only London and Ibiza, but also across Europe, the US and further afield – whether that's a château in the South of France, a penthouse in New York, or a chalet in the Swiss Alps.



DOMUS NOVA

Specialising in London
and Ibiza's design-led homes

Let's talk
020 7221 7817
sales@domusnova.com

The particulars above are a guide, not an offer or contract. Descriptions, photographs and plans are not statements or representations of fact. Measurements are approximate and not to scale. Prospective purchasers must verify the accuracy of the information within the particulars. Domus Nova does not give any representations or warranties; nor represent the Seller legally. Domus Nova has no liability, for any costs, losses or expenses incurred by the Seller or a prospective buyer relating to the sales and buying transaction.

Our Sales Disclaimer, trading names and privacy policy on how your data is processed and used is found in full on our website in our [Privacy Statement](#).

© 2025 Domus Nova in partnership with BARNES International. All rights reserved.

In partnership with
BARNES
INTERNATIONAL REALTY