

DOMUS NOVA



St Petersburg Place, W2
£5,850,000



With Hyde Park within walking distance and Notting Hill in easy reach, the quiet enclave of this family home appeals inside and out. Behind its classic façade, five floors span from a sprawling garden-level social hub to serene, private sleeping quarters. With an intuitive understanding of light and space, St Petersburg Place offers the rare chance to obtain a garden-square property ripe for reimagining.

From the ground floor entrance, natural light feels woven into the fabric of the design. Sash windows make light a defining feature of the drawing room, a welcoming setting that instantly uplifts. Period elements reign – from a striking ceiling rose and cornicing to an eye-catching carved fireplace – while modern interludes keep things contemporary.

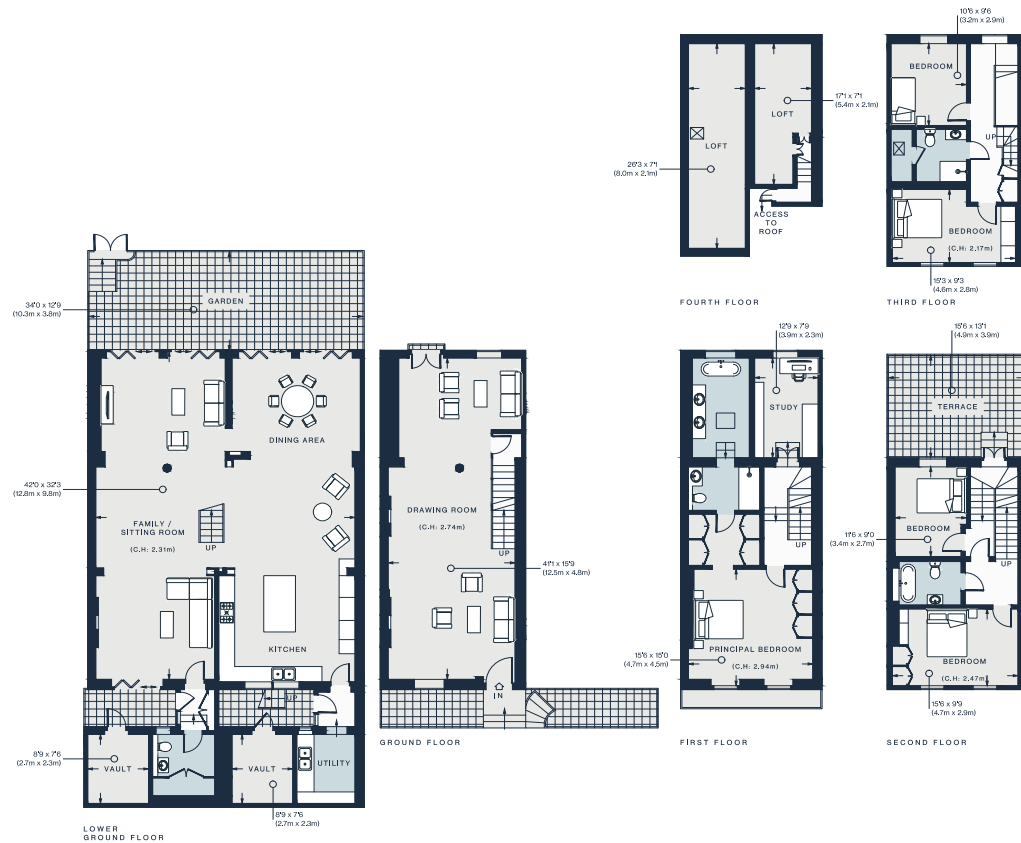
Descending to the garden level, a vast-open plan layout serves as a luminous canvas for family life. Areas to cook, eat and spend time socialising are thoughtfully arranged around the central staircase, while a generous footprint allocates space to study or work out. Across one wall, four sets of doors fold back to the garden – a decked area imagined for summertime entertaining. For additional space in the warmer months, make use of the communal garden or the home's roof terrace – accessible from the second floor.











Approx. Gross Internal Area = 4,142 sq ft / 384.8 sq m
(Including Loft / Vaults)

Floor plans are for illustrative purposes only and not to scale. Compliant with RICS code of measuring practice.

Property Details

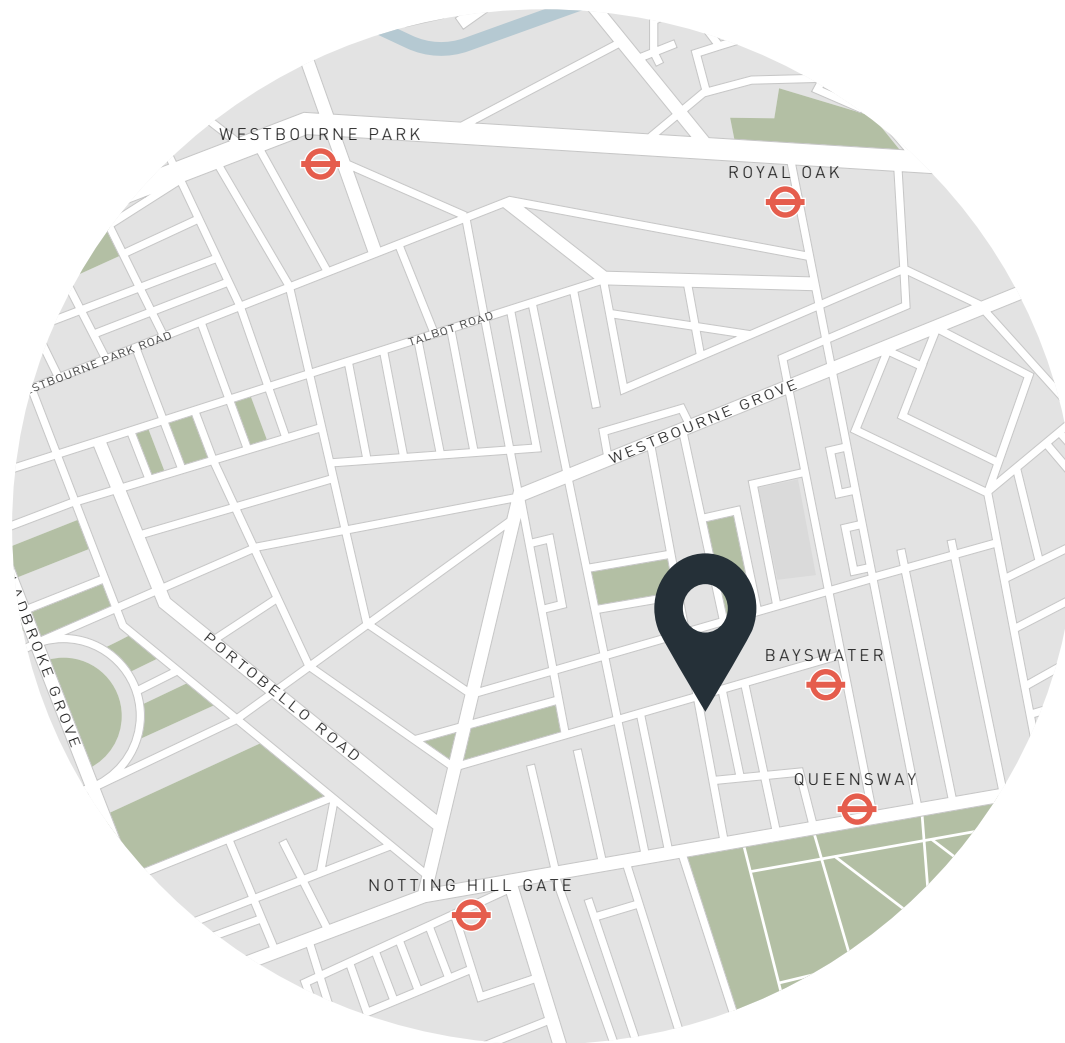
Spacious drawing room
Open-plan kitchen and dining room
Generous double reception room
Principal bedroom suite with walk-in wardrobe
Four further bedrooms
Family bathroom
Shower room
Study
Private garden
Terrace
Loft storage space
Utility room
City of Westminster

Approx. 4,142 sq ft / 384.8 sq m

EPC=D

Tenure: Freehold

Council Tax Band: H



Location

Nestled between Notting Hill Gate and Bayswater, St Petersburg Place is a springboard to the best of west London. In a matter of moments reach the expansive lawns of Hyde Park, with the Serpentine Lido poised for early-morning swims. With an exciting development of Queensway's streetscape currently underway – including Parisian-style pavilions, calming greenery and a wealth of boutiques – Leinster Gardens is perfectly positioned to reap all the benefits of this burgeoning community. Hop between the brunch spots, boutiques and wellness centres that line Westbourne Grove – before arriving at Portobello Road for vintage shopping and global eateries.

Bayswater (4 mins)

Specialising in London
and Ibiza's design-led homes

Let's talk
020 7221 7817
sales@domusnova.com
domusnova.com

The particulars above are a guide, not an offer or contract. Descriptions, photographs and plans are not statements or representations of fact. Measurements are approximate and not to scale. Prospective purchasers must verify the accuracy of the information within the particulars. Domus Nova does not give any representations or warranties; nor represent the Seller legally. Domus Nova has no liability, for any costs, losses or expenses incurred by the Seller or a prospective buyer relating to the sales and buying transaction.

Our Sales Disclaimer, trading names and privacy policy on how your data is processed and used is found in full on our website in our [Privacy Statement](#).

© Domus Nova 2024. All rights reserved.