

DOMUS NOVA



St Petersburg Place, W2 – £8,250 p/w (LL)

In partnership with **BARNES**
INTERNATIONAL REALTY



Expansive in scale yet minimalist in design, St Petersburg Place has been designed to adapt to modern family life. An entire floor is devoted to leisure, while a garage and self-contained studio or office add an element of flexibility rarely found within walking distance of Kensington Gardens. Set well back from the street behind an immaculate Victorian façade, the house reveals the contemporary vision of Michela Bertolini of MBDA.

Inside, the living spaces are fluid and light filled. Expanses of glazing and open-plan volumes allow natural light to travel throughout, creating long sightlines and a strong sense of connection between floors. At its centre, a sunken atrium draws daylight deep into the lower levels, illuminating a suite of leisure spaces including a games room, gym and cinema.

These lower floors also accommodate a guest bedroom, a study that could be used as an additional bedroom, a bathroom, cloakroom, laundry and steam room with a separate WC – a thoughtfully orchestrated extension of the home’s footprint beneath both house and terrace. The cinema is fully equipped with a 123-inch screen, surround sound and reclining seating, while integrated systems – including Lutron lighting and zoned climate control – ensure the house performs seamlessly behind its pared-back aesthetic.





Clean architectural lines define the principal living spaces. A Bulthaup kitchen with integrated Miele appliances flows into a dining area set beneath a glass ceiling with a retractable roof, opening onto a private terrace and garden. Upstairs, a double reception room and study benefit from dual-aspect light.

The material palette is deliberately restrained: raw natural finishes and white walls are complemented by mid-century design pieces by Philippe Starck and Vitra, alongside sculptural lighting, including vintage Murano glass by Luigi Catellos.







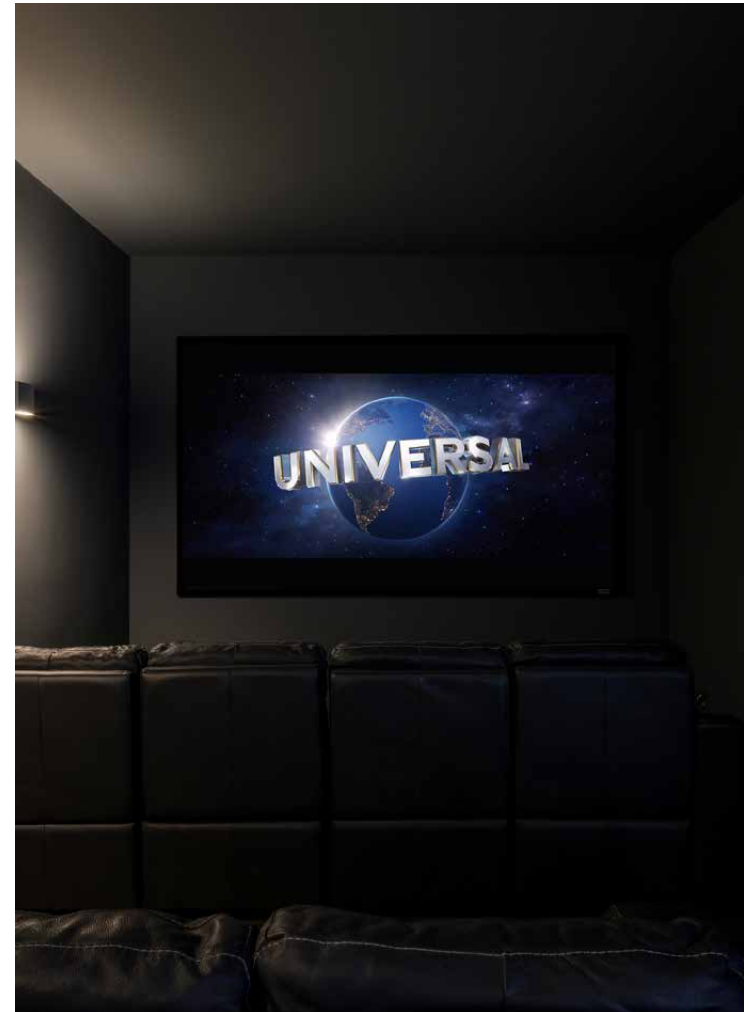






“Expanses of glazing and open-plan volumes allow natural light to travel throughout, creating a strong sense of connection between floors







The upper floors continue this sense of calm and cohesion. The principal suite features streamlined storage and a bright en suite with walk-in shower, double vanity and bath. Two further bedrooms and a family bathroom occupy the floor below.

Completing the impressive footprint, a self-contained mews house features a garage plus an additional bedroom or office.

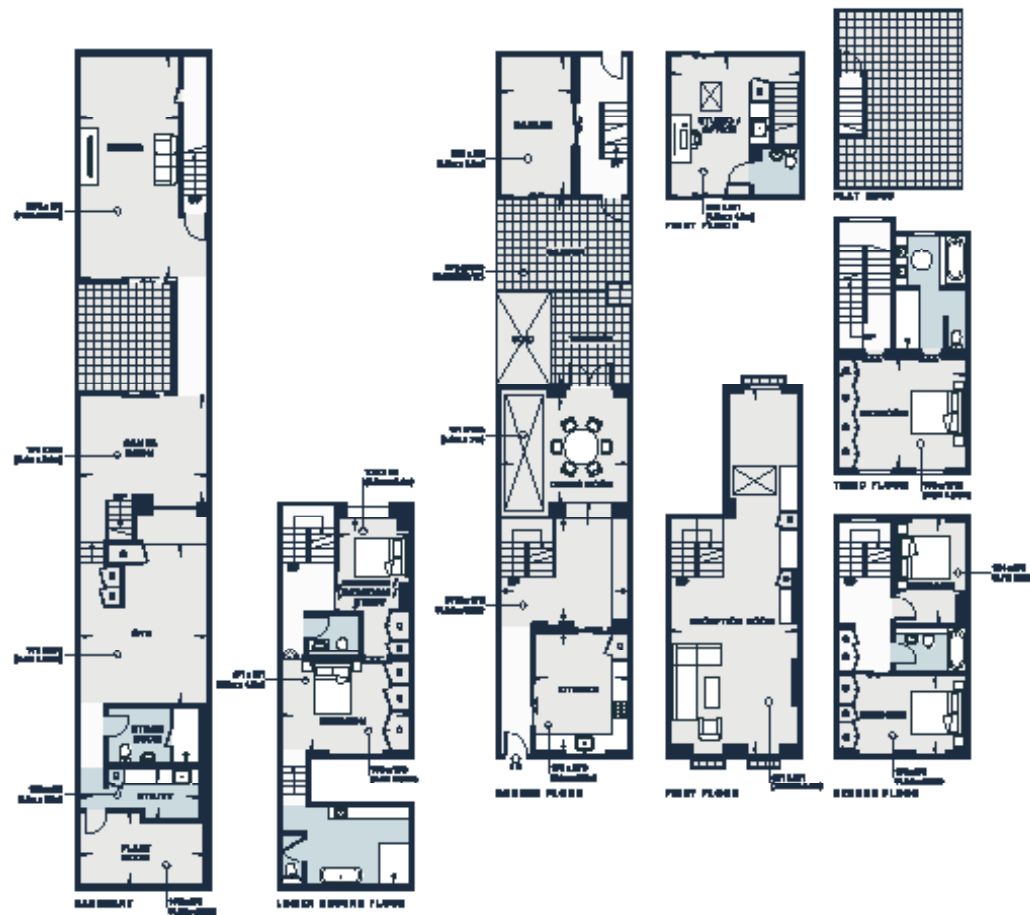












Approx. Gross Internal Area = 4,252 sq ft / 395.0 sq m

Floor plans are for illustrative purposes only and not to scale. Compliant with RICS code of measuring practice.
Furniture layouts are indicative only. This property may be furnished, part-furnished or unfurnished. Please refer to your agent for details.
Prepared for Dorcas Homes. Copyright © All Rights Reserved.

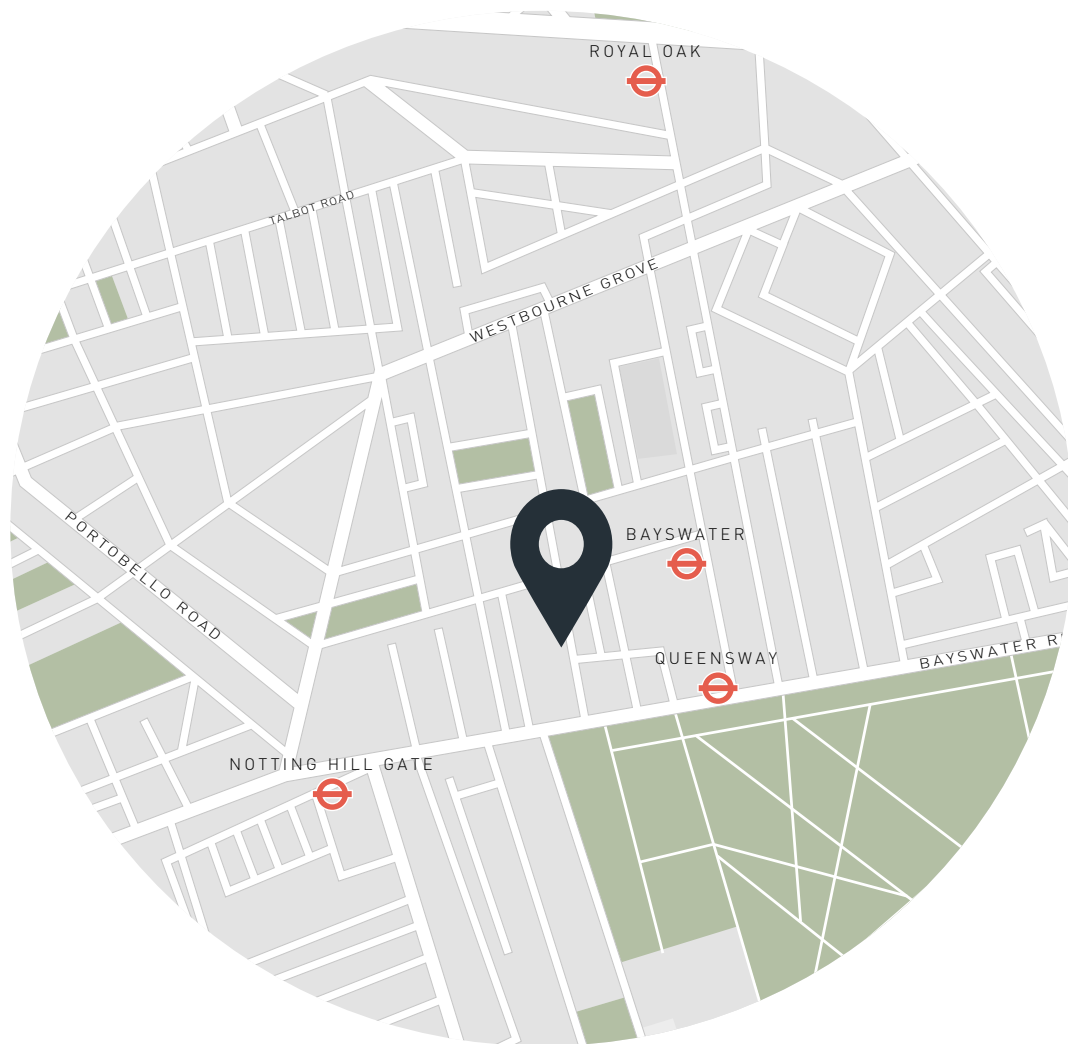
Property Details

5 Bedrooms, 4 Bathrooms
Five-bedroom townhouse with one-bedroom mews house
Architecture by MBDA
Bulthaup kitchen and dining room
Double reception room
Cinema, gym and games room
Principal bedroom suite
Four further bedrooms
Three further bathrooms
Study / additional bedroom
Terrace
Steam room
Garage
Self-contained mews studio/ office
Underfloor heating
Lighting, media and door entry systems
Communal garden access *contingent on board approval
City of Westminster

Approx. 4,252 sq ft / 395 sq m

Deposit: £49,500

Council Tax Band: H



Location

Perfectly positioned between Notting Hill Gate and Bayswater, St Petersburg Place is a well-connected, quietly residential pocket, minutes from acres of green space. Local rituals come easily: morning coffee at Guillam, Pilates at Heartcore and workouts in Hyde Park. Stroll down to The Whiteley to catch a film at Everyman or unwind at the Six Senses Spa. Westbourne Grove's cafés, restaurants and boutiques are in walking distance, along with the markets of Portobello Road. Even closer to home, sip natural wines at Sol's before dinner at The Park.

Queensway – 5 mins (Central)

Bayswater – 5 mins (District & Circle)



Who ——— we are

Forward-thinkers in property, design and culture, we're an estate agency that hits refresh.

Domus Nova was born out of a desire to do things differently; to break the traditional agency model and focus on design-led homes in London and Ibiza, all while delivering the highest levels of personal service.

Our story starts in the nineties when we founded Notting Hill's first boutique agency – and we continue to open the doors to the most remarkable spaces, revealing them to our like-minded community.

We want to help you live better – and believe considered design can do that. That's why we remain committed to building on our legacy, in collaboration with BARNES International, an established agency with a market-leading presence in 22 countries.

Uniting our local insight and curated portfolio with BARNES International's expansive reach, we can facilitate the best opportunities in not only London and Ibiza, but also across Europe, the US and further afield – whether that's a château in the South of France, a penthouse in New York, or a chalet in the Swiss Alps.



DOMUS NOVA

Specialising in London
and Ibiza's design-led homes

Let's talk

020 7727 1717

lettings@domusnova.com

The property particulars are a guide not statements. Descriptions, photographs, and plans are for guidance and should be checked by the prospective tenant. The Property is offered "subject to contract and references". No warranties, representations, or Tenancy is given by Domus Nova. Expenses incurred by a prospective tenant will not be reimbursed if the Landlord withdraws prior to the Tenancy Agreement being signed, dated and exchanged and cleared funds received. Furniture and other items shown in a property at viewing may belong to a current tenant. The prospective tenant should verify in writing which fixtures and fittings forms part of the Tenancy. Our full lettings disclaimer together with trading names and our [Privacy Policy](#) is shown on our website

© 2025 Domus Nova in partnership with BARNES International. All rights reserved.

In partnership with
BARNES
INTERNATIONAL REALTY