

DOMUS NOVA

St Marks Road

North Kensington W10

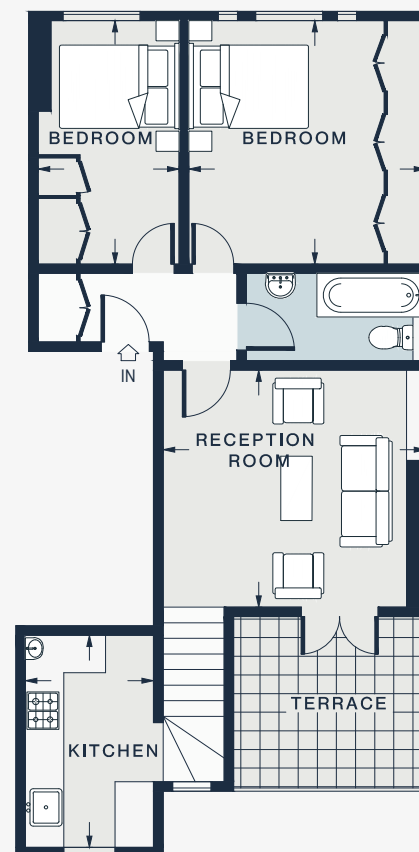
APPROXIMATE GROSS INTERNAL AREA

614 sq ft / 57 sq m

020 7727 1717

domusnova.com

LONDON | IBIZA



FIRST FLOOR

RECEPTION ROOM

13'5 x 12'6 (4.1m x 3.8m)

BEDROOM

12'6 x 7'3 (3.8m x 2.2m)

KITCHEN

11'0 x 6'7 (3.4m x 2.0m)

BEDROOM

12'8 x 12'0 (3.9m x 3.7m)

Approx. Gross Internal Area = 614 sq ft / 57 sq m

Floor plans are for illustrative purposes only and not to scale. Compliant with RICS code of measuring practice. Furniture layouts are indicative only. This property may be furnished, part-furnished or unfurnished. Please refer to your agent for details.