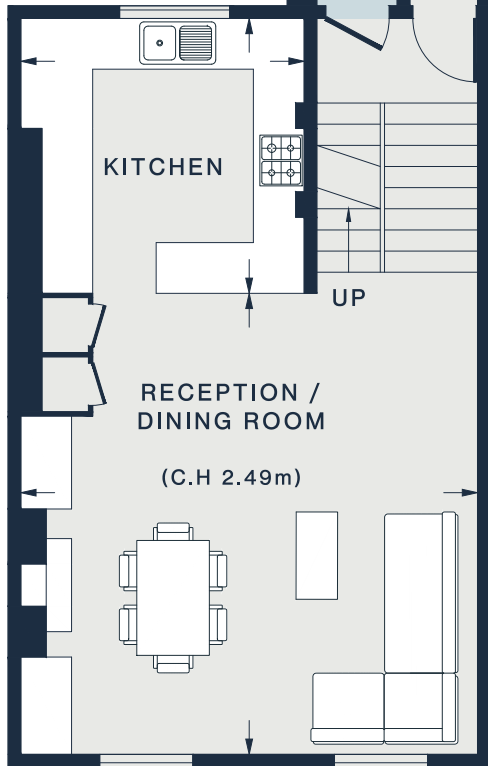


[] = REDUCED HEAD HEIGHT BELOW 1.5m



RECEPTION / DINING ROOM

17'11 x 17'10 (5.4m x 5.4m)



KITCHEN

10'11 x 10'8 (3.3m x 3.2m)



PRINCIPAL BEDROOM

16'11 x 13'11 (5.1m x 4.2m)



BEDROOM 2

10'11 x 8'10 (3.3m x 2.6m)



OFFICE / BEDROOM 3

8'8 x 6'11 (2.6m x 2.1m)



First Floor = 6 sq ft / 0.6 sq m
 Second Floor = 594 sq ft / 55.2 sq m
 Third Floor = 440 sq ft / 40.9 sq m
 Approx. Gross Internal Area = 1,040 sq ft / 96.7 sq m

Floor plans are for illustrative purposes only and not to scale. Compliant with RICS code of measuring practice.
 Prepared for Domus Nova. Copyright © All Rights Reserved.