

DOMUS NOVA

St Lukes Road

Notting Hill W11

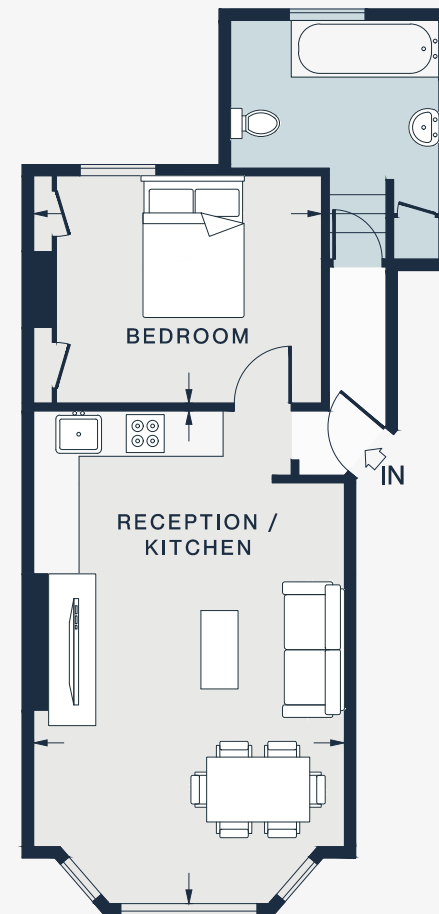
APPROXIMATE GROSS INTERNAL AREA

506 sq ft / 47 sq m

020 7221 7817

domusnova.com

L O N D O N | I B I Z A



RAISED GROUND FLOOR

RECEPTION / KITCHEN

21'5 x 13'5 (6.5m x 4.1m)

BEDROOM

12'5 x 10'0 (3.8m x 3.0m)

Floor plans are for illustrative purposes only and not to scale. Compliant with RICS code of measuring practice.